

CONTINUED ON SITE SERVICES SHEET 3 DRAWING No: BARRY_01_DWG_01_20133

2D EXPORT FROM A 3D MODEL
ALL ALTERATIONS TO BE MADE IN THE MODEL FILE

DRAWING TO BE REPRODUCED IN COLOUR

FOR INFORMATION

Rev	Date	Issued For Information	Description	By	Chk	App
A	16.10.17					

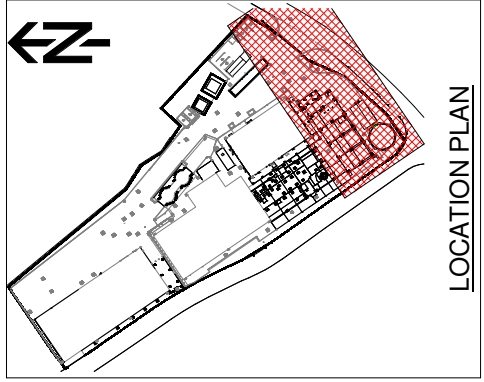
GHD LIVINGUNN
The Studio
51 Brookfield Road
Cheshire
SK9 1ES
0161 491 4600
info@ghdlivingunn.com

GallifordTry
PROJECT
BARRY BIOMASS UK NO 2 LIMITED

TITLE
PLANNING LAYOUT
SITE SERVICES SHEET 4

SCALE
1:100
DRAWING SIZE
A1

DWG No
BARRY_19_DWG_01_40104
REV.
A



LOCATION PLAN

NOTES

- GENERAL**
- DO NOT SCALE FROM THIS DRAWING.
 - ALL DIMENSIONS ARE IN MILLIMETRES (mm) & ALL LEVELS ARE IN METRES (m) AOD, UNLESS STATED OTHERWISE.
 - ALL DIMENSIONS & LEVELS TO BE CHECKED ON SITE AND ANY DISCREPANCIES SHOULD BE REPORTED TO GHD LIVINGUNN.
 - THIS DRAWING IS TO BE READ IN CONJUNCTION WITH ALL RELEVANT PROJECT STANDARDS AND SPECIFICATIONS.
- REFERENCE DRAWINGS:**
- BARRY_19_DWG_01_40101 - SITE SERVICES GA SHEET 1 OF 4
 - BARRY_19_DWG_01_40102 - SITE SERVICES GA SHEET 2 OF 4
 - BARRY_19_DWG_01_40103 - SITE SERVICES GA SHEET 3 OF 4
 - BARRY_19_DWG_01_40104 - SITE SERVICES GA SHEET 4 OF 4
 - BARRY_19_DWG_01_40105 - ATTENUATION TANK
 - BARRY_19_DWG_01_40106 - FUEL INTERCEPTOR
- DRAINAGE:**
- ALL DRAINAGE WORKS TO BE CARRIED OUT IN ACCORDANCE WITH CESWI 7TH EDITION
 - NEW DRAINS ARE UNDERGROUND PVC U, IN ACCORDANCE WITH BS 4660, PROCESS WATER DRAINS TO BE HATHERWARE CHEMICAL RESISTANCE - TBC
 - PIPE JOINTS IMMEDIATELY ADJACENT TO STRUCTURES AND CHAMBERS ARE FULLY ARTICULATED ROCKER PIPE JOINTS.
 - ROCKER PIPES ARE 600mm LONG UNO ROCKER PIPES TO BE POSITIONED MINIMUM ACHIEVABLE DISTANCE FROM MANHOLE OR CHAMBER WITH ALLOWANCE FOR INSTALLATION OF FLEXIBLE JOINT
 - ALL BURIED PIPES AND DUCTS UNDER STRUCTURE TO BE CONCRETE, ALSO WHERE GROUND COVER IS LESS THAN 900mm.
 - DOUBLE STEPS SHALL BE PLASTIC ENCAPSULATED CARBON STEEL MANHOLE STEPS TO BS 12472. STEP IRONS AT 2500mm CENTRES HORIZONTALLY AND DOUBLE STEPS.
 - PIPE BEDDING DETAILS SHOWN ON DRAWING: BARRY_01_DWG_01_20135

LEGEND:

[Orange line]	HYDRANT RING MAIN
[Light blue line]	SURFACE WATER DRAIN
[Red line]	FOUL WATER DRAIN
[Green line]	PROCESS WATER DRAIN (AS HATHERWARE THERMACHEM PIPEWORK)
[Yellow line]	ELECTRICAL DUCTS
[Dark blue line]	POTABLE WATER MAIN (AS PURITON BARRIER PIPE OSA)
[Light blue circle]	SW SURFACE WATER MANHOLE
[Red circle]	FW FOUL WATER MANHOLE
[Green circle]	DP ELECTRICAL DRAWPIT
[Blue circle]	RWP RAIN WATER PIPE
[Orange circle]	GU ROAD GULLY
[Light blue circle]	HYP HYDRANT POINT (PROPOSED)
[Red circle]	FW FOULED WATER VALVE (PROPOSED)
[Blue circle]	BD BACKFLOW VALVE
[Green circle]	FDWK FIRE DELUGE VALVE KIOSK