

CONTINUED ON SITE SERVICES
SHEET 2, DRAWING NO:
BARRY_19_DWG_01_40102

CONTINUED ON SITE SERVICES
SHEET 4, DRAWING NO:
BARRY_19_DWG_01_40104

Rev	Date	Issued For Information	Description	By	Chk	App
A	16.10.17					

The Studio
51 Brookfield Road
Cheshire
SK9 1ES
0161 491 4600
info@thestudio.com

GallifordTry

PROJECT
BARRY BIOMASS UK NO 2 LIMITED

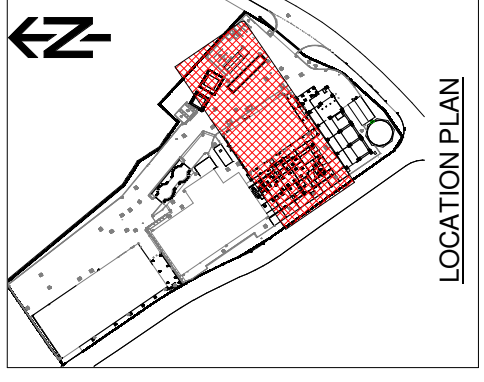
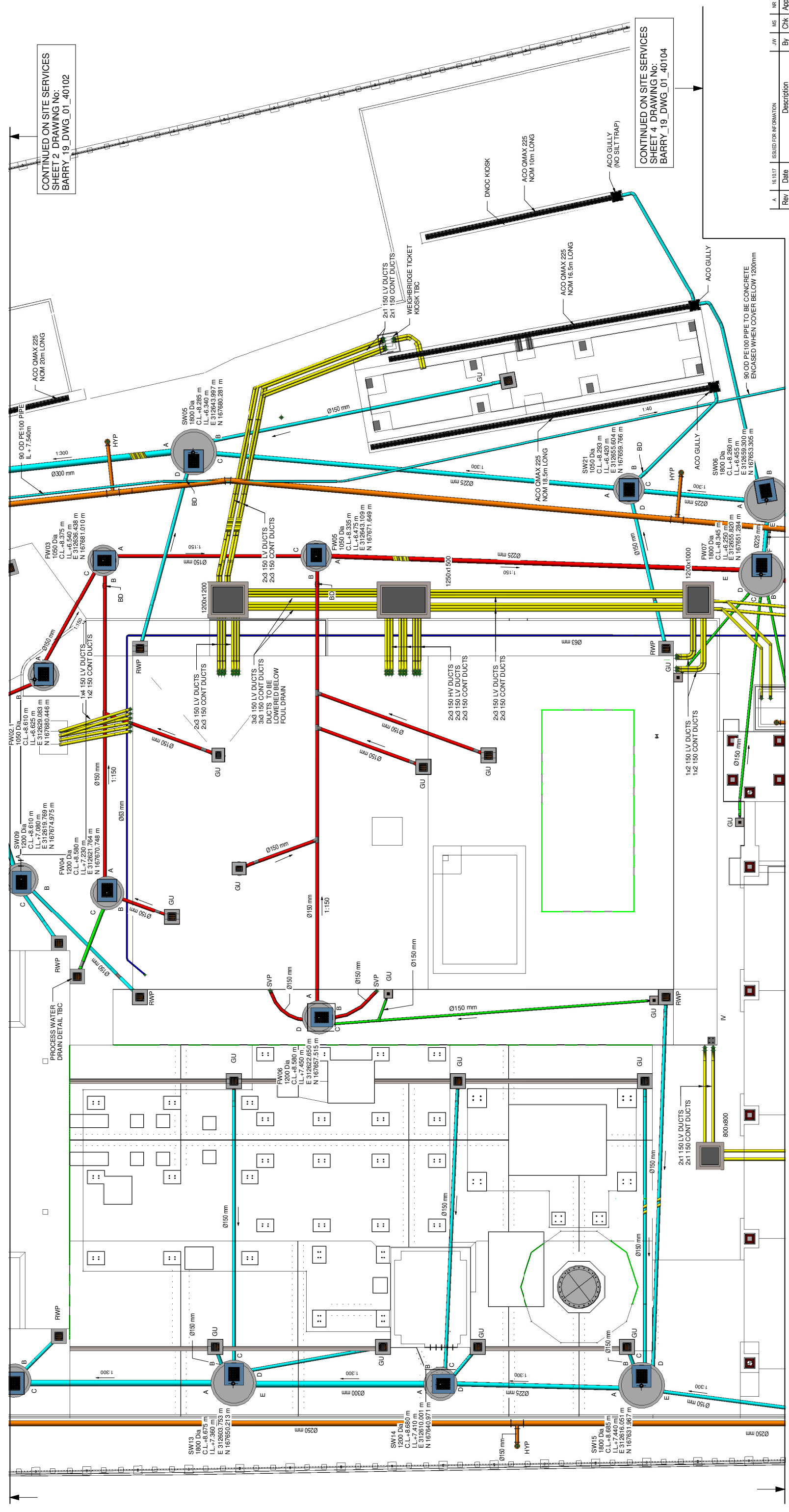
TITLE
**PLANNING LAYOUT
SITE SERVICES SHEET 3**

SCALE
1:100
DRAWING SIZE
A1
DWG No
BARRY_19_DWG_01_40103
REV.
A

FOR INFORMATION

2D EXPORT FROM A 3D MODEL
ALL ALTERATIONS TO BE MADE IN THE MODEL FILE

DRAWING TO BE REPRODUCED IN COLOUR



LEGEND:

	HYDRANT RING MAIN
	SURFACE WATER DRAIN
	FOUL WATER DRAIN
	PROCESS WATER DRAIN (AS HATHERWARE THERMACHEM PIPEWORK)
	ELECTRICAL DUCTS
	POTABLE WATER MAIN (AS PURITON BARRIER PIPE OSA)
	SURFACE WATER MANHOLE ELECTRICAL MANHOLE ELECTRICAL DRAWPIT
	RAIN WATER PIPE
	ROAD WATER PIPE
	HYDRANT POINT (PROPOSED)
	ISOLATION VALVE (PROPOSED)
	BACK-DROP
	FIRE DELUGE VALVE KIOSK

- NOTES**
- DO NOT SCALE FROM THIS DRAWING.
 - ALL DIMENSIONS ARE IN MILLIMETRES (mm) & ALL LEVELS ARE IN METRES (m) AOD, UNLESS STATED OTHERWISE.
 - ALL DIMENSIONS & LEVELS TO BE CHECKED ON SITE AND ANY DISCREPANCIES SHOULD BE REPORTED TO GHD LIVING.
 - THIS DRAWING IS TO BE READ IN CONJUNCTION WITH ALL RELEVANT PROJECT STANDARDS AND SPECIFICATIONS.
- REFERENCE DRAWINGS:**
- BARRY_19_DWG_01_40101 - SITE SERVICES GA SHEET 1 OF 4
 - BARRY_19_DWG_01_40102 - SITE SERVICES GA SHEET 2 OF 4
 - BARRY_19_DWG_01_40103 - SITE SERVICES GA SHEET 3 OF 4
 - BARRY_19_DWG_01_40104 - SITE SERVICES GA SHEET 4 OF 4
 - BARRY_19_DWG_01_40105 - ATTENUATION TANK
 - BARRY_19_DWG_01_40106 - FUEL INTERCEPTOR
- ALL DRAINAGE WORKS TO BE CARRIED OUT IN ACCORDANCE WITH CEN/BS 7178 EDITION 1.
 - NEW DRAINS ARE UNDERGROUND PVC-U IN ACCORDANCE WITH BS 4680. PROCESS WATER DRAINS TO BE HATHERWARE CHEMICAL RESISTANCE - TBC TO BE INSTALLED IMMEDIATELY ADJACENT TO STRUCTURES AND CHAMBERS ARE FULLY ARTICULATED ROCKER PIPE JOINTS.
 - ROCKER PIPES ARE 600mm LONG U.N.O ROCKER PIPES TO BE POSITIONED MINIMUM ACHIEVABLE DISTANCE FROM MANHOLE OR CHAMBER WITH ALLOWANCE FOR INSTALLATION OF FLEXIBLE JOINT.
 - ALL BURIED PIPES AND DUCTS UNDER STRUCTURE TO BE ENCASED IN MIN 150mm THICK C16/20 MASS CONCRETE. ALSO WHERE GROUND COVER IS LESS THAN 900mm.
 - DOUBLE STEPS SHALL BE PLASTIC ENCASED/ULATED CARBON STEEL MANHOLE STEPS TO BS 12472. STEP IRONS AT 250/300 CENTRES HORIZONTALLY AND VERTICALLY MAY BE USED AS AN ALTERNATIVE TO DOUBLE STEPS.
 - PIPE BEDDING DETAILS SHOWN ON DRAWING: BARRY_01_DWG_01_20135