

NOTES

GENERAL

- DO NOT SCALE FROM THIS DRAWING.
- ALL DIMENSIONS ARE IN MILLIMETRES (mm) & ALL LEVELS ARE IN METRES (m) AOD, UNLESS STATED OTHERWISE.
- ALL DIMENSIONS & LEVELS TO BE CHECKED ON SITE AND ANY DISCREPANCIES SHOULD BE REPORTED TO GHD LIVIGUNN.
- THIS DRAWING IS TO BE READ IN CONJUNCTION WITH ALL RELEVANT PROJECT STANDARDS AND SPECIFICATIONS.

DRAINAGE

- ALL DRAINAGE WORKS TO BE CARRIED OUT IN ACCORDANCE WITH CESWI 7TH EDITION
- NEW DRAINS ARE UNDERGROUND PVC-U IN ACCORDANCE WITH BS 4660. PROCESS WATER DRAINS TO BE HATHERNWARE CHEMICAL RESISTANCE - TBC
- PIPE JOINTS IMMEDIATELY ADJACENT TO STRUCTURES AND CHAMBERS ARE FULLY ARTICULATED ROCKER PIPE JOINTS.
- ROCKER PIPES ARE 600mm LONG U.N.O ROCKER PIPES TO BE POSITIONED MINIMUM ACHIEVABLE DISTANCE FROM MANHOLE OR CHAMBER WITH ALLOWANCE FOR INSTALLATION OF FLEXIBLE JOINT
- ALL BURIED PIPES AND DUCTS UNDER STRUCTURE TO BE ENCASED IN MIN 150mm THICK C16/20 MASS CONCRETE. ALSO WHERE GROUND COVER IS LESS THAN 900mm.
- DOUBLE STEPS SHALL BE PLASTIC ENCAPSULATED CARBON STEEL MANHOLE STEPS TO BS 1247-2. STEP IRONS AT 250/300 CENTRES HORIZONTALLY AND VERTICALLY MAY BE USED AS AN ALTERNATIVE TO DOUBLE STEPS.
- PIPE BEDDING DETAILS SHOWN ON DRAWINGS: BARRY\_01\_DWG\_01\_20135 & 20136

REFERENCE DRAWINGS:

BARRY\_01\_DWG\_01\_20131 - SITE SERVICES GA SHEET 1 OF 4  
 BARRY\_01\_DWG\_01\_20132 - SITE SERVICES GA SHEET 2 OF 4  
 BARRY\_01\_DWG\_01\_20133 - SITE SERVICES GA SHEET 3 OF 4  
 BARRY\_01\_DWG\_01\_20134 - SITE SERVICES GA SHEET 4 OF 4  
 BARRY\_01\_DWG\_01\_20135 - SITE SERVICES DETAILS SHEET 1  
 BARRY\_01\_DWG\_01\_20136 - SITE SERVICES DETAILS SHEET 2

SEE DETAILED DRAWINGS FOR HATHERNWARE THERMACHEM GULLY DETAILS AND STD GULLY DETAILS WHERE CAST INTO SLABS.

2D EXPORT FROM A 3D MODEL  
 ALL ALTERATIONS TO BE MADE IN THE MODEL FILE

PRELIMINARY

A	17.10.16	FIRST ISSUE	JW	MS	GB
Rev	Date	Description	By	Chk	App
Revision					

**GHDLIVIGUNN**  
 The Studio  
 51 Brookfield Road  
 Cheshire  
 SK8 1ES  
 0161 491 4600  
 info@ghdlivigunn.com

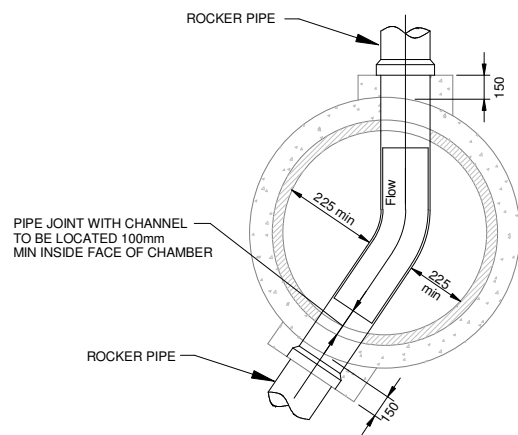
CLIENT  
**GallifordTry**

PROJECT  
**BARRY BIOMASS UK NO 2 LIMITED**

TITLE  
**SITE SERVICES - DETAILS SHEET 1**

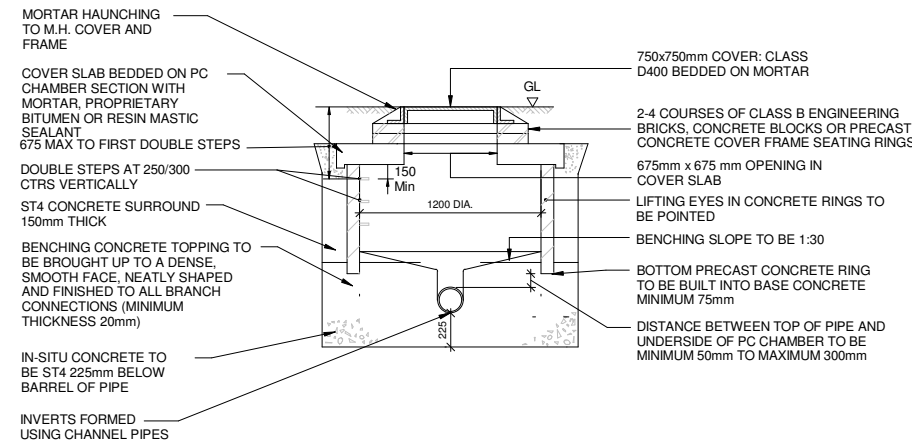
SCALE  
 N.T.S. DRAWING SIZE  
 A1

DWG No.  
**BARRY\_01\_DWG\_01\_20135** REV.  
**A**



TYPICAL MANHOLE PLAN

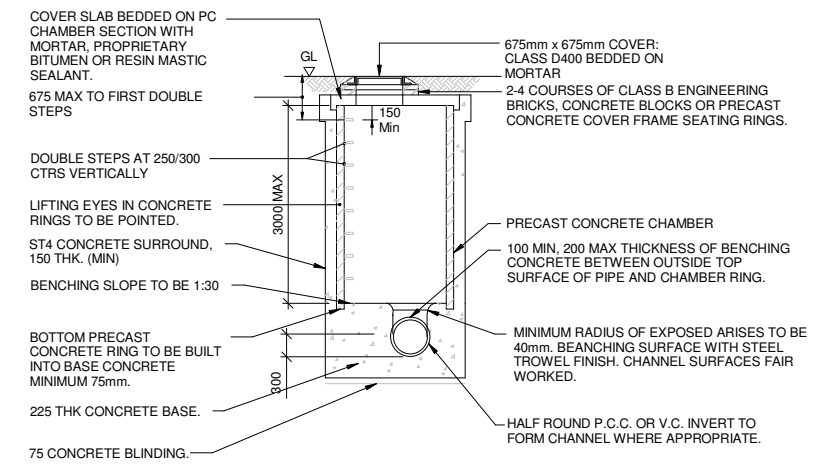
N.T.S.



TYPE A - TYPICAL MANHOLE DETAIL

N.T.S.

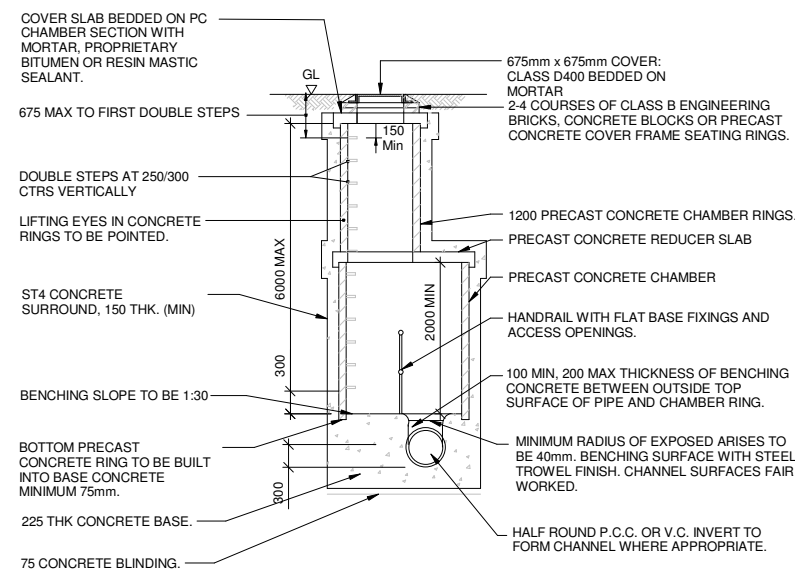
(DEPTH TO SOFFIT < 1500mm)



TYPE B - TYPICAL MANHOLE DETAIL

N.T.S.

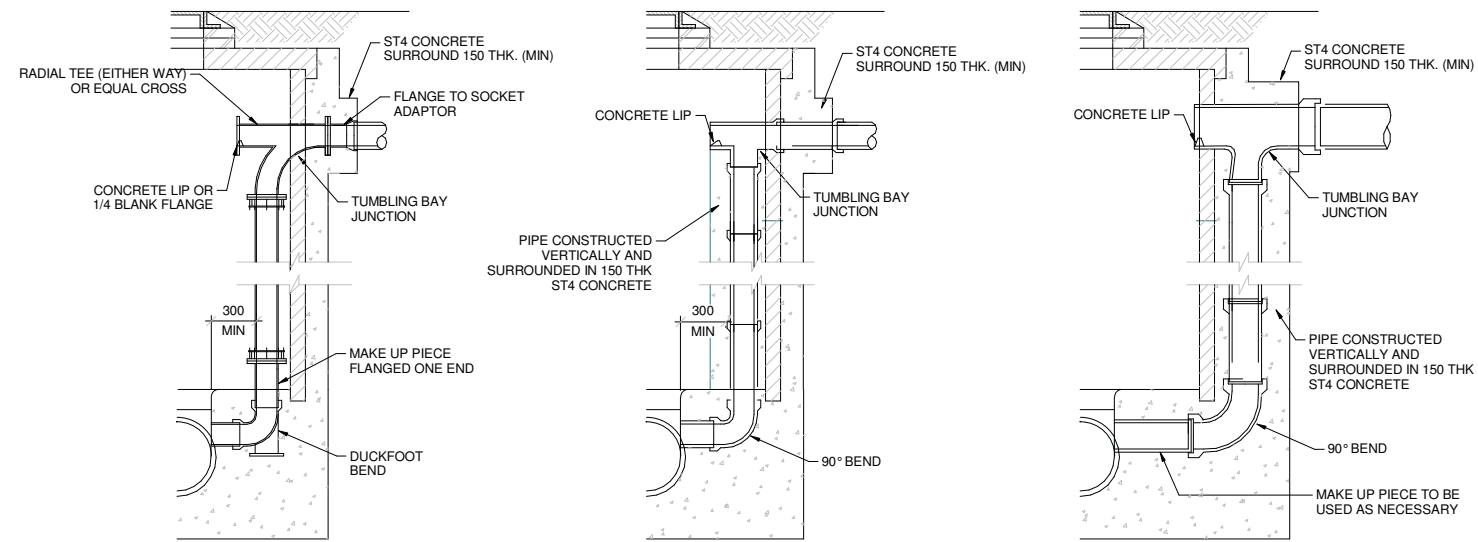
(DEPTH TO SOFFIT > 1500, < 3000)



TYPE C - TYPICAL MANHOLE DETAIL

N.T.S.

(DEPTH TO SOFFIT > 3000)



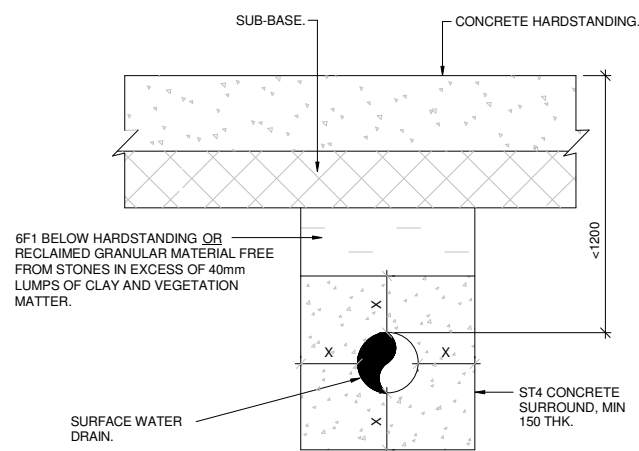
INTERNAL FLANGED CONNECTED PIPEWORK

INTERNAL SPIGOT AND SOCKET PIPEWORK

EXTERNAL SPIGOT AND SOCKET PIPEWORK

TYPICAL ARRANGEMENTS FOR BACKDROP DETAILS

N.T.S.



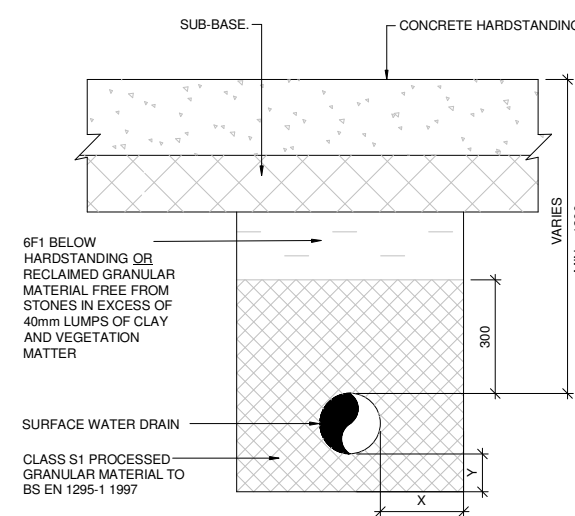
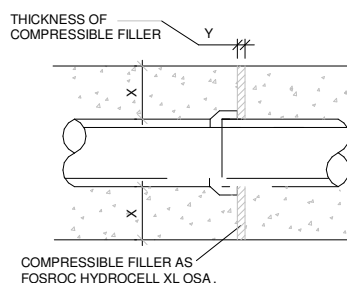
PIPE ENCASEMENT DETAIL

(WHERE COVER TO PIPE < 1200mm)

SCALE 1:10

TRENCH DIMENSIONS

NOMINAL EXT. PIPE DIAMETER	X (mm)	Y (mm)
<400	150	18
400 - 700	200	36
725 - 1200	300	36



PIPE BEDDING DETAIL FOR FLEXIBLE PIPES

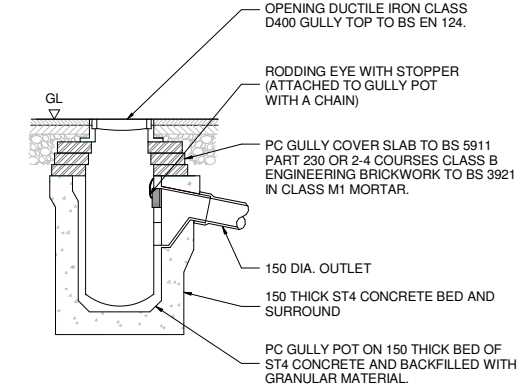
SCALE 1:10

TRENCH DIMENSIONS

NOMINAL EXT. PIPE DIAMETER	X (mm)
<400	150
400 - 700	225

NOTE: VALUES ASSUME EVEN TRENCH BOTTOM. IF UNEVEN INCREASE VALUE Y BY 100mm.

450 DIA. x 900 DEEP PC GULLY POT TO BS 5911 PART 230 OR VITRIFIED CLAY TO BS 65 OR BS EN 295 OR UPVC TO BS 4660.



ROAD GULLY DETAIL

SCALE 1:25