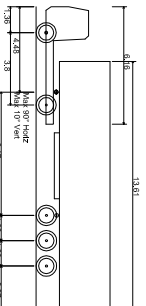


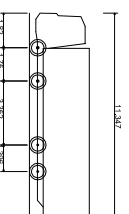
DO NOT SCALE - IF IN DOUBT ASK

NOTES

- DO NOT SCALE FROM THIS DRAWING.
- ALL DIMENSIONS ARE IN MILLIMETRES (mm) & ALL LEVELS ARE IN METRES (m) AOD, UNLESS STATED OTHERWISE.
- ALL DIMENSIONS & LEVELS TO BE CHECKED ON SITE AND ANY DISCREPANCIES SHOULD BE REPORTED TO G.H.A. LTD.



FTA Design Articulated Vehicle (1999)
 Overall Length 11.347m
 Overall Width 2.550m
 Overall Body Height 3.377m
 Min Body Ground Clearance 0.330m
 Max Track Width 2.477m
 Lock-to-lock time 3.00s
 Curb to Curb Turning Radius 6.350m



Large Tipper Vehicle (4 axle)
 Overall Length 11.347m
 Overall Width 2.550m
 Overall Body Height 3.377m
 Min Body Ground Clearance 0.330m
 Max Track Width 2.477m
 Lock-to-lock time 3.00s
 Curb to Curb Turning Radius 6.350m

HOLD
 SITE ENTRANCE / GATEWAY
 ARRANGEMENT TBC.

PRELIMINARY

Rev	Date	Description	By	Chk	App
C	11.10.17	SITE LAYOUT UPDATED	JW	NS	GB
B	15.12.16	SITE LAYOUT UPDATED	JW	NS	GB
A	27.04.16	FIRST ISSUE	JW	NS	GB

GHD LIVINGUNN
 The Studio
 51 Brookfield Road
 Chelsea
 SW9 1ES
 0161 497 4800
 info@ghdlivingunn.com

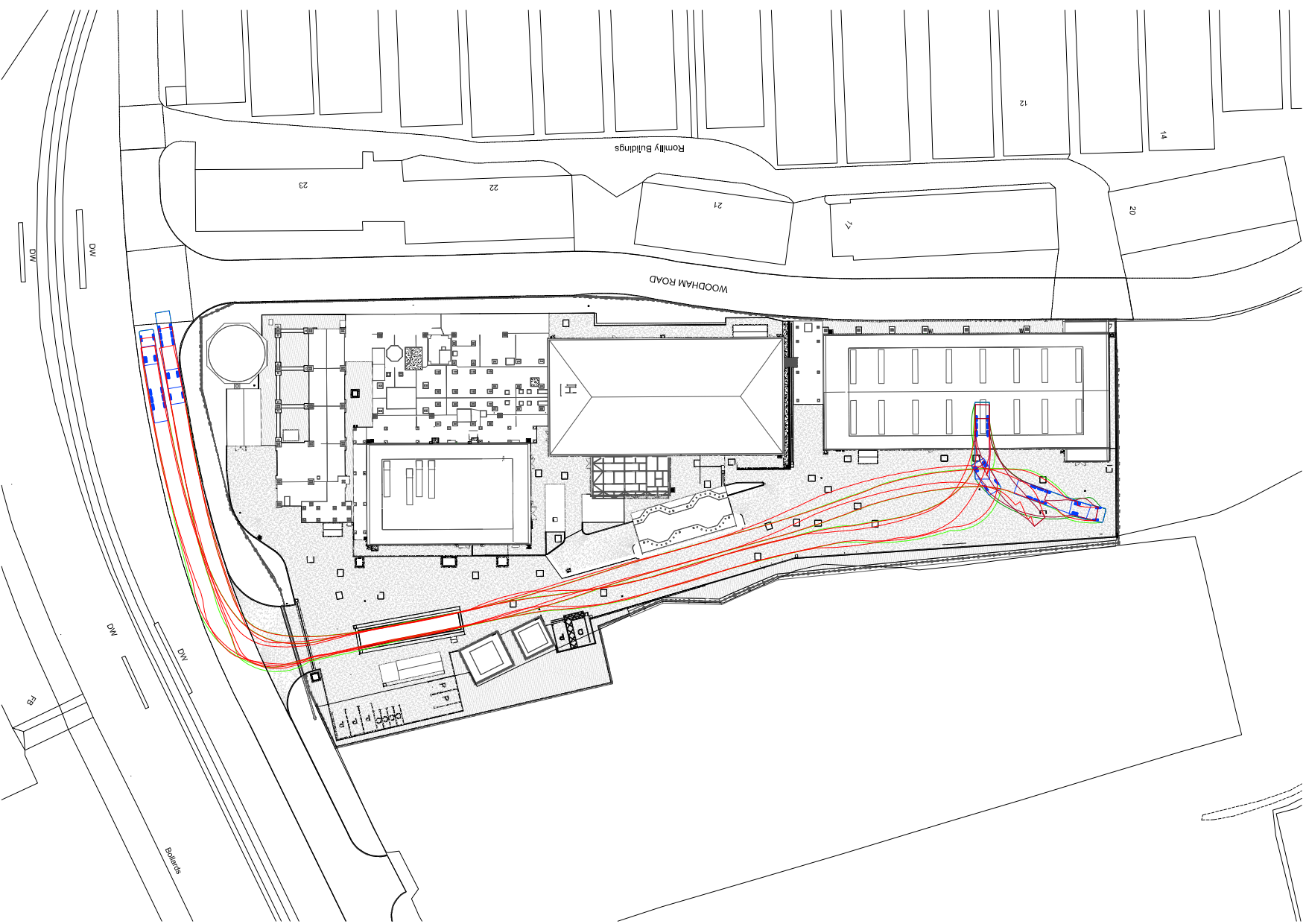
GallifordTry

PROJECT
BARRY - BIOMASS UK No 2 LIMITED

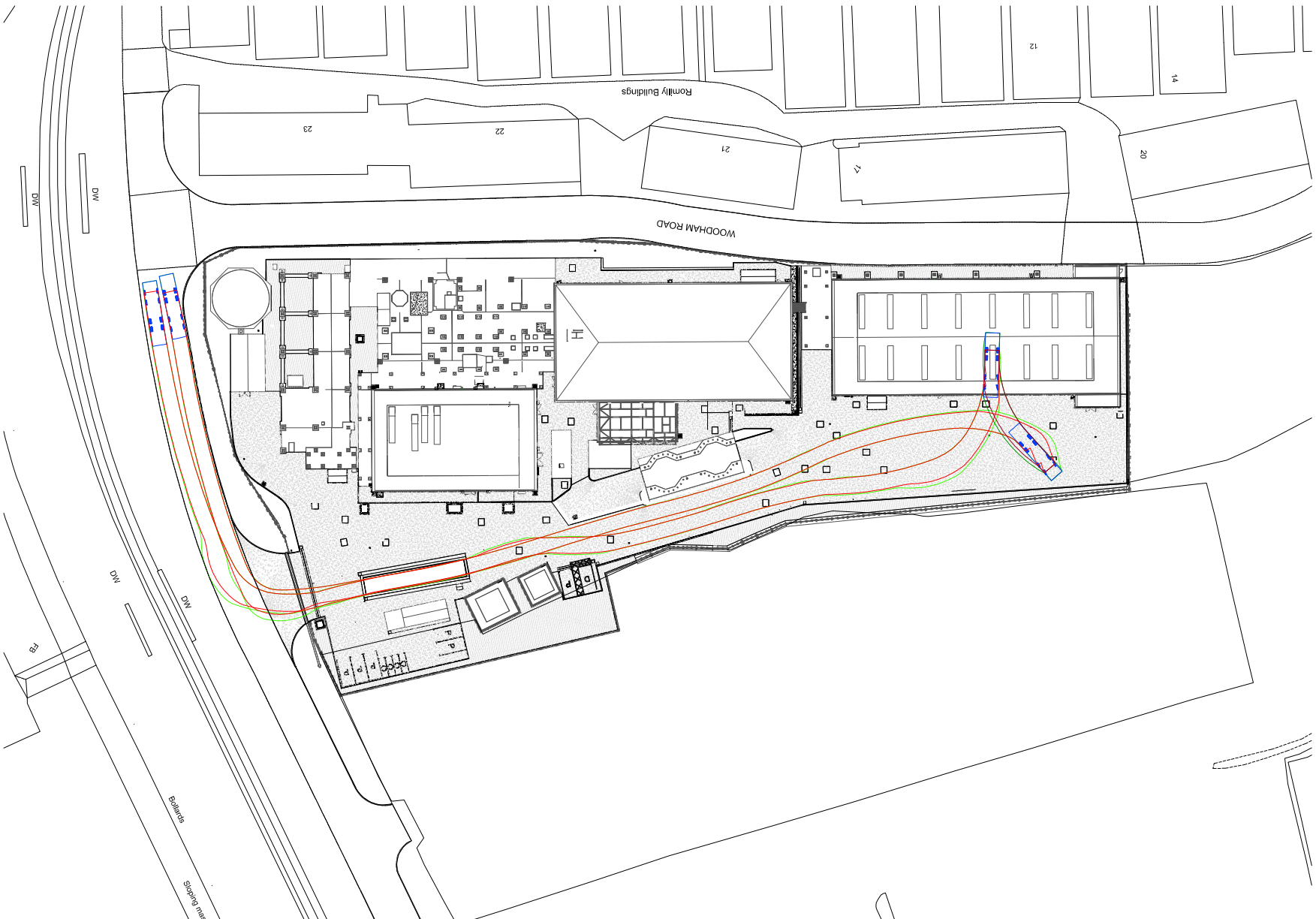
TITLE
**TRAFFIC MOVEMENT PLAN
 SHEET 1**

SCALE
 1:500
 DRAWING SIZE
 A1
 DRAWN
 JW

DRAWINGS NO
BARRY_01_DWG_01_20115
 REV
C



**SITE ACCESS AND DELIVERY ROUTE
 ARTICULATED VEHICLE**



**SITE ACCESS AND DELIVERY ROUTE
 4 AXLE TIPPER VEHICLE**

SAFETY, HEALTH & ENVIRONMENTAL (SHE) INFORMATION	IN ADDITION TO THE HAZARDS/RISKS NORMALLY ASSOCIATED WITH THE TYPES OF WORK DETAILED ON THIS DRAWING, NOTE THE FOLLOWING:
CONSTRUCTION	NONE
MAINTENANCE / CLEANING	1. TRAFFIC MANAGEMENT SYSTEM TO BE CONSIDERED BY END USER
DECOMMISSIONING / DEMOLITION	NONE