

SPECIFICATION
All works generally, to comply with the written Soft Landscape Specification.

NOTE: DO NOT SCALE FROM DRAWING

FOR PLANTING SCHEDULE, SEE SHEET 3

Legend

- Existing trees to be retained and protected during construction
- Proposed tree planting within soft landscape. See detail on sheet 1
- Proposed specimen shrub planting to receive short angular staking on half standards with expandable tree ties. Irrigation tubing to root system of *Amelanchier* and *Forsythia* specimens as required
- Proposed climbing plants to be trained up adjacent wall/ fence/pergola with galvanised wires and hook set 250mm apart with support canes removed prior to planting
- Proposed hedge planting to be planted in a single row at 300mm centres
- Proposed hedge planting to be planted in a double staggered row 300mm apart and at 500mm centres in each row. To be maintained at 1m height
- Proposed native hedge planting to be planted in a double staggered row 300mm apart and at 500mm centres in each row. To be maintained at 1m height and 1.8m height adjacent to site boundaries
- Proposed shrub planting to receive 75mm bark mulch after planting operations
- Proposed decorative mix shrub planting to be planted in groups of 5-7no. of each species and as above
- Proposed native mix shrub planting to be planted in groups of 5-7no. of each species to receive suitable guarding
- Proposed grass areas to receive good quality amenity grass tuves laid in line with good horticultural practices
- Proposed grassland areas, to be seeded with AM6 amenity lawn seed mix to be sown at 17-35g/m² as supplied by meadowmania.co.uk or similar
- Proposed wildflower areas, to be seeded with mead3 and wild3 general purpose wild flower seed mix to be sown at 4g/m² as supplied by meadowmania.co.uk or similar
- Proposed wetland area to be seeded with mead6 and wild6 wetland wildflower seed mix to be sown at 4g/m² as supplied by meadowmania.co.uk or similar
- Cut lines



C	31.08.17	Ecological enhancements	JNT
B	19.07.17	Layout changes	HCS
A	12.07.17	Client comments	SF
Rev	Date	Details	Drawn



HEAD OFFICE
Rodbourne Rail Business Centre, Grange Lane,
Malmesbury, SN16 0ES
Tel: 01666 825646

Courtyard House, Mill Lane, Godalming, GU7 1EY
Tel: 01483 425714

Suite 6, Crescent House, Yonge Close, Eastleigh, SO50 9SX
Tel: 02382 026500

9 Brownlow Road, Cambridge, CB4 3NC
Tel: 07825 868654

email: mail@acdenv.co.uk
www.acdenvironmental.co.uk



scheme: Caerleon Road, Dinas Powys
client: Quattro Design Architects
drawing: Landscape Proposals
date: Jun. 2017
scale: 1:200@A1
drawing no: PRI21273-11C sheet 3 of 3
drawn: JNT checked: JS

Copyright of ACD Environmental Ltd. All rights described in Chapter IV of the Copyright, Designs and Patents Act 1988 have been generally asserted. 2011. Copyright of this plan remains with ACD until all fees have been paid in full.

Planting Schedule

Species Name	Birth	Height	Density	Specification	No.
<i>Crataegus monogyna</i>	14-16cm	4-5m	0.5cr	Double Staggered at 0.3m offset	164 No
<i>Acer platanoides</i> 'Crimson King'	14-16cm	4-5m	Counted	Standard 'Clear Stem 175-200' RB	8 No
<i>Acer campestre</i>	14-16cm	4-4.5m	Counted	Standard 'Clear Stem 175-200' RB	34 No
<i>Crataegus monogyna</i>	16-18cm	0.4-5m	Counted	Standard 'Clear Stem 'Clear Stem 175-200' RB	172 No
<i>Sorbus aucuparia</i> 'Vilmorinii'	14-16cm	4-5m	Counted	Standard 'Clear Stem 175-200' RB	1 No
<i>Acer platanoides</i> 'Globosum'	14-16cm	4-4.5m	Counted	Standard 'Clear Stem 175-200' RB	2 No
<i>Salix alba</i>	14-16cm	4-4.5m	Counted	Standard 'Clear Stem 175-200' RB	1 No
<i>Viburnum lantana</i>	14-16cm	4-4.5m	Counted	Standard 'Clear Stem 175-200' RB	1 No
<i>Sorbus aria</i> 'Lutescens'	16-18cm	0.5-0m	Counted	Standard 'Clear Stem 175-200' RB	7 No
<i>Quercus petraea</i>	14-16cm	0.5-0m	Counted	Standard 'Clear Stem 175-200' RB	4 No
<i>Betula pendula</i>	14-16cm	0.5-0m	Counted	Standard 'Clear Stem 175-200' RB	14 No
<i>Salix caprea</i>	80	100cm	3/m	Leather Bushy BR	81 No
<i>Carpinus betulus</i>	100-125cm	0.5cr	Double Staggered at 0.3m offset	transplant BR. Planted and maintained as mixed hedge	320 No
<i>Acer campestre</i>	14-16cm	0.5-0m	Counted	transplant BR. Planted and maintained as mixed hedge	320 No
<i>Corylus avellana</i>	100-125cm	0.5cr	Double Staggered at 0.3m offset	transplant BR. Planted and maintained as mixed hedge	320 No
<i>Euonymus europaeus</i>	100-125cm	0.5cr	Double Staggered at 0.3m offset	transplant BR. Planted and maintained as mixed hedge	109 No

Conifers

Species Name	Height	Pot Size	Specification	Density	No.
<i>Juniperus communis</i>	40-60cm	8L	Single leader C	1/m ²	28 No
<i>Pinus sylvestris</i>	175-200cm	25-30L	Leather Single leader	32/Counted	6 No

Shrubs

Species Name	Height	Pot Size	Specification	Density	No.
<i>Abelia floribunda</i>	40-50cm	8L	Bushy C	8/m ²	18 No
<i>Amelanchier lamarckii</i>	100-120cm	25-30L	Branched 2/4 brks C	Counted	4 No
<i>Calluna vulgaris</i>	10-20cm	2L	Bushy C	8/m ²	71 No
<i>Chaenomeles speciosa</i> 'Geisha Girl'	40-50cm	8L	Bushy C	8/m ²	102 No
<i>Choysya ternata</i>	40-50cm	8L	Bushy C	8/m ²	139 No
<i>Cornus sanguinea</i>	40-50cm	8L	Bushy C	8/m ²	139 No
<i>Cornus alba</i> 'Snow White'	40-50cm	8L	Branched 4 brks C	1/m ²	76 No
<i>Cornus alba</i>	40-50cm	8L	Bushy C	8/m ²	40 No
<i>Cornus avellana</i>	40-50cm	8L	Branched 3 brks C	1/m ²	116 No
<i>Cornus alba</i> 'Vivid Beauty'	30-40cm	8L	Bushy 3 brks C	8/m ²	139 No
<i>Elaeagnus ebbingei</i> 'Gilt Edge'	60-80cm	8L	Bushy C	8/m ²	116 No
<i>Elaeagnus ebbingei</i> 'Gilt Edge'	60-80cm	8L	Bushy C	8/m ²	116 No
<i>Escallonia 'Peach Blossom'</i>	30-40cm	8L	Branched C	8/m ²	46 No
<i>Euonymus fortunei</i> 'Emerald 'n' Gold'	30-40cm	8L	Bushy 3 brks C	8/m ²	78 No
<i>Coronilla 'Golden Nugget'</i>	60-80cm	10L	Branched 2/4 brks C	Counted	13 No
<i>Fuchsia 'Mrs Popple'</i>	20-30cm	8L	Branched C	8/m ²	84 No
<i>Hebe franciscana</i> 'Blue Gem'	60-80cm	8L	Bushy C	8/m ²	174 No
<i>Hebe salicifolia</i>	60-80cm	8L	Bushy C	8/m ²	174 No
<i>Hebe salicifolia</i> 'Variegata'	20-30cm	8L	Bushy C	8/m ²	24 No
<i>Lavandula angustifolia</i> 'Wickel Purple'	20-30cm	8L	Bushy C	8/m ²	24 No
<i>Leucothoe fontanesiana</i> 'Rainbow'	40-50cm	8L	Bushy C	8/m ²	85 No
<i>Ligustrum vulgare</i>	100-125cm	0.5cr	Branched BR. Planted and maintained as mixed hedge	0.5cr Double Staggered at 0.3m offset	161 No
<i>Conocarpus nana</i> 'Lemon Beauty'	40-50cm	8L	Bushy C	8/m ²	84 No
<i>Conocarpus nana</i> 'May Green'	40-50cm	8L	Bushy 8 brks C	8/m ²	139 No
<i>Naharia 'Soft Caress'</i>	40-50cm	8L	Branched 2/4 brks C	8/m ²	84 No
<i>Photinia fraseri</i> 'Red Robin'	60-80cm	8L	Bushy C	8/m ²	208 No
<i>Pieris japonica</i> 'Scarlett O'Hara'	40-50cm	8L	Bushy C	8/m ²	4 No
<i>Pittosporum tenuifolium</i> 'Tom Thumb'	40-50cm	8L	Bushy C	8/m ²	24 No
<i>Prunus laurocerasus</i> 'Otto Luyken'	30-40cm	8L	Bushy 3 brks C	8/m ²	8 No
<i>Rosmarinus off.</i> 'Miss Jessop's Upright'	40-50cm	8L	Bushy C	8/m ²	40 No
<i>Sambucus nigra</i>	100-125cm	0.5cr	Branched BR. Planted and maintained as mixed hedge	0.5cr Double Staggered at 0.3m offset	161 No
<i>Skimmia japonica</i> 'Fructo Alba'	30-40cm	8L	Bushy 3 brks C	8/m ²	85 No
<i>Viburnum lantana</i>	30-40cm	8L	Branched 4 brks C	1/m ²	29 No
<i>Viburnum opulus</i>	40-60cm	8L	Branched 4 brks C	1/m ²	58 No

Climbers

Species Name	Height	Pot Size	Specification	Density	No.
<i>Clematis armandii</i> 'Apple Blossom'	100-150cm	15L	Several Shoots Gained	Counted	2 No
<i>Hydrangea petiolaris</i>	100-150cm	15L	Several Shoots Gained	Counted	4 No

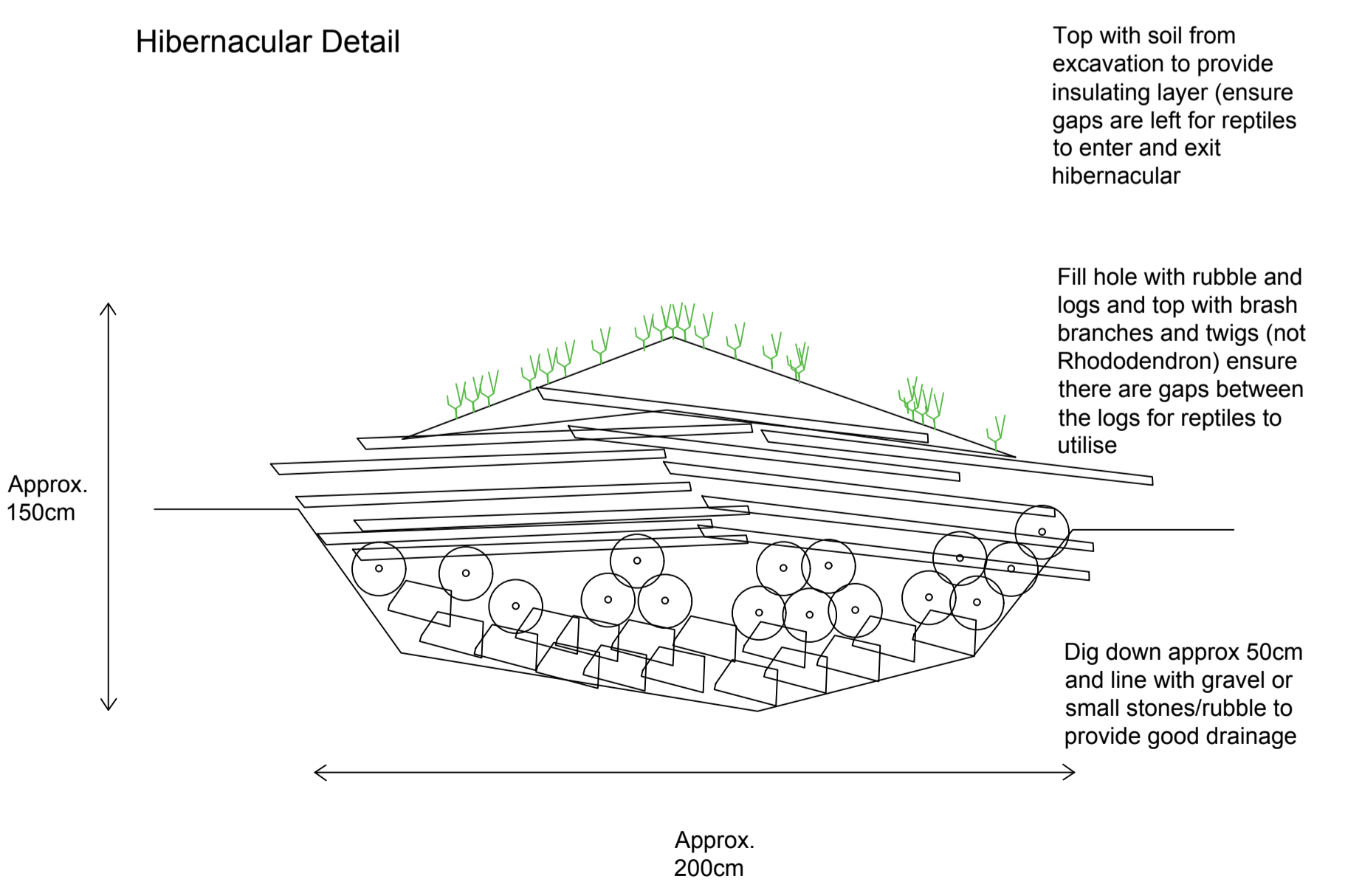
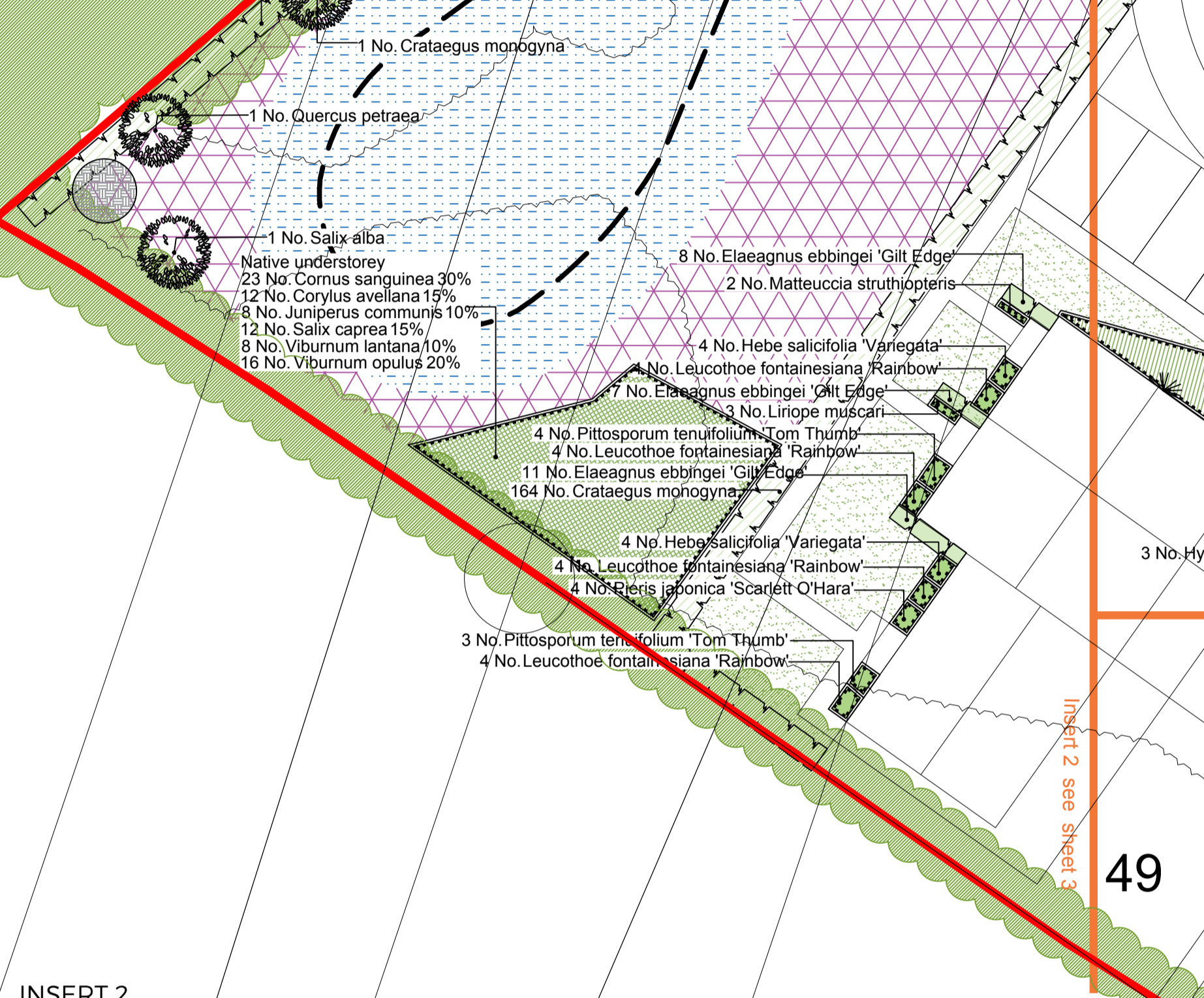
Herbaceous

Species Name	Height	Pot Size	Specification	Density	No.
<i>Jacquinia 'Silberlicht'</i>	2L	Full Pot	5m	14 No	
<i>Liriope muscari</i>	2L	Full Pot	5m	14 No	
<i>Luzula nivea</i>	2L	Full Pot	5m	14 No	
<i>Luzula sylvatica</i> 'Marginata'	2L	Full Pot	5m	14 No	
<i>Miscanthus sinensis</i> 'Zebrinus'	3L	Full Pot	4m	28 No	
<i>Scirpus 'Herbststreu'</i>	3L	Full Pot	5m	14 No	

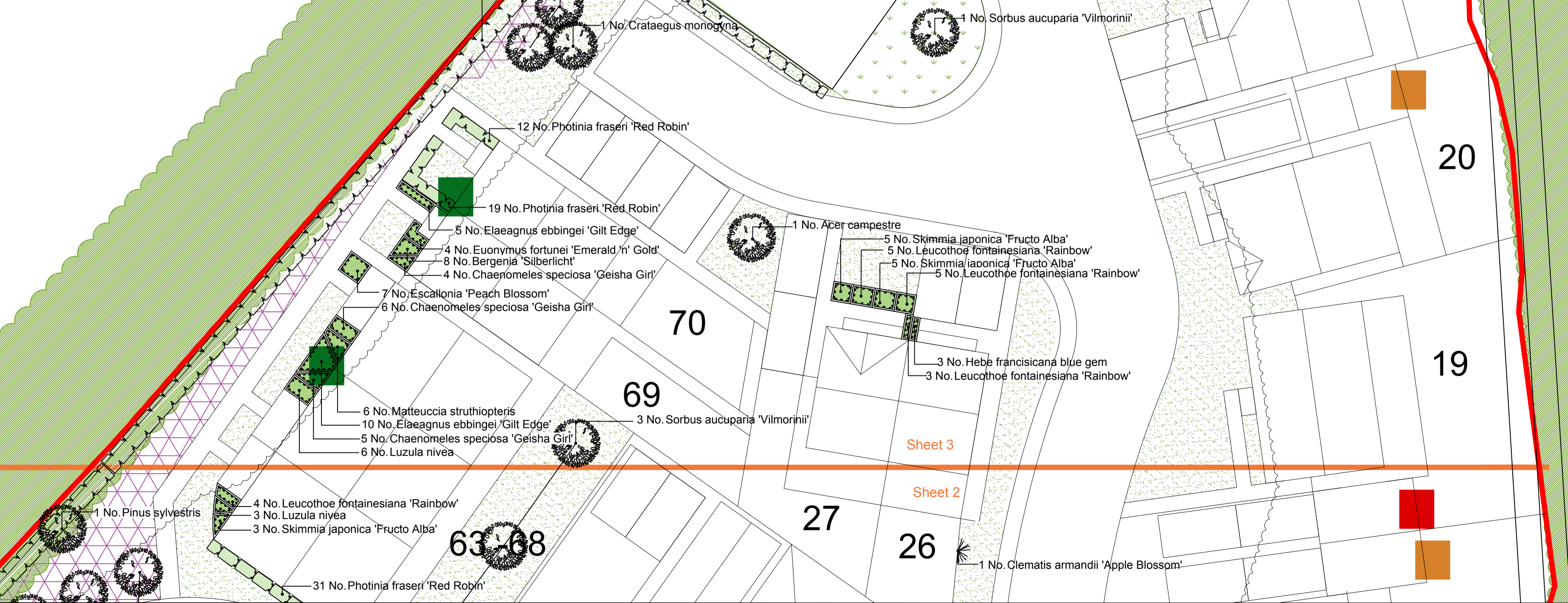
Ferns

Species Name	Height	Pot Size	Specification	Density	No.
<i>Matteuccia struthiopteris</i>	8L	Full Pot	8m	8 No	

Mixed native hedge
68 No. *Acer campestre* 30%
23 No. *Corylus avellana* 30%
34 No. *Ligustrum vulgare* 15%
34 No. *Sambucus nigra* 15%



Mixed native hedge
124 No. *Acer campestre* 30%
124 No. *Corylus avellana* 30%
42 No. *Euonymus europaeus* 10%
62 No. *Ligustrum vulgare* 15%
62 No. *Sambucus nigra* 15%



Copyright of ACD Environmental Ltd. All rights described in Chapter IV of the Copyright, Designs and Patents Act 1988 have been generally asserted. 2011. Copyright of this plan remains with ACD until all fees have been paid in full.