

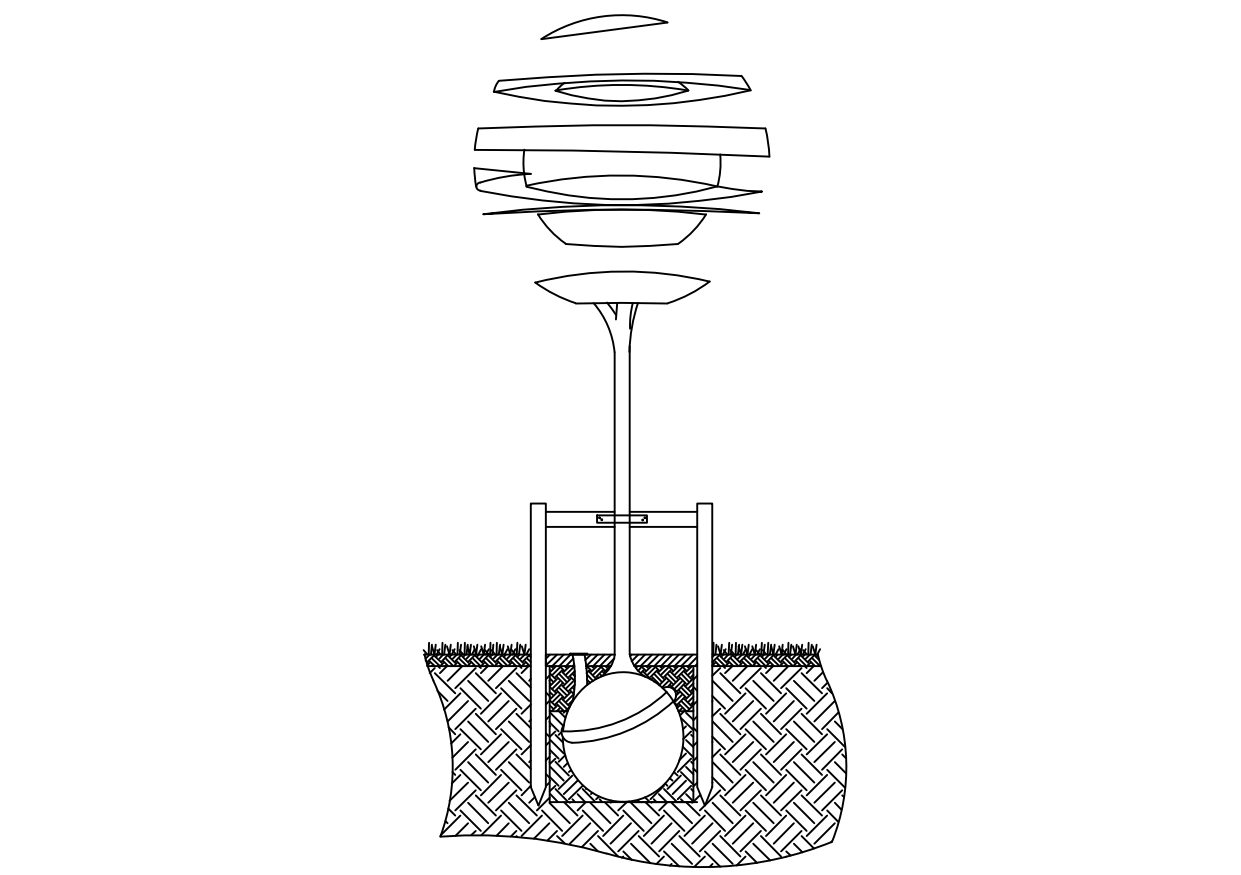
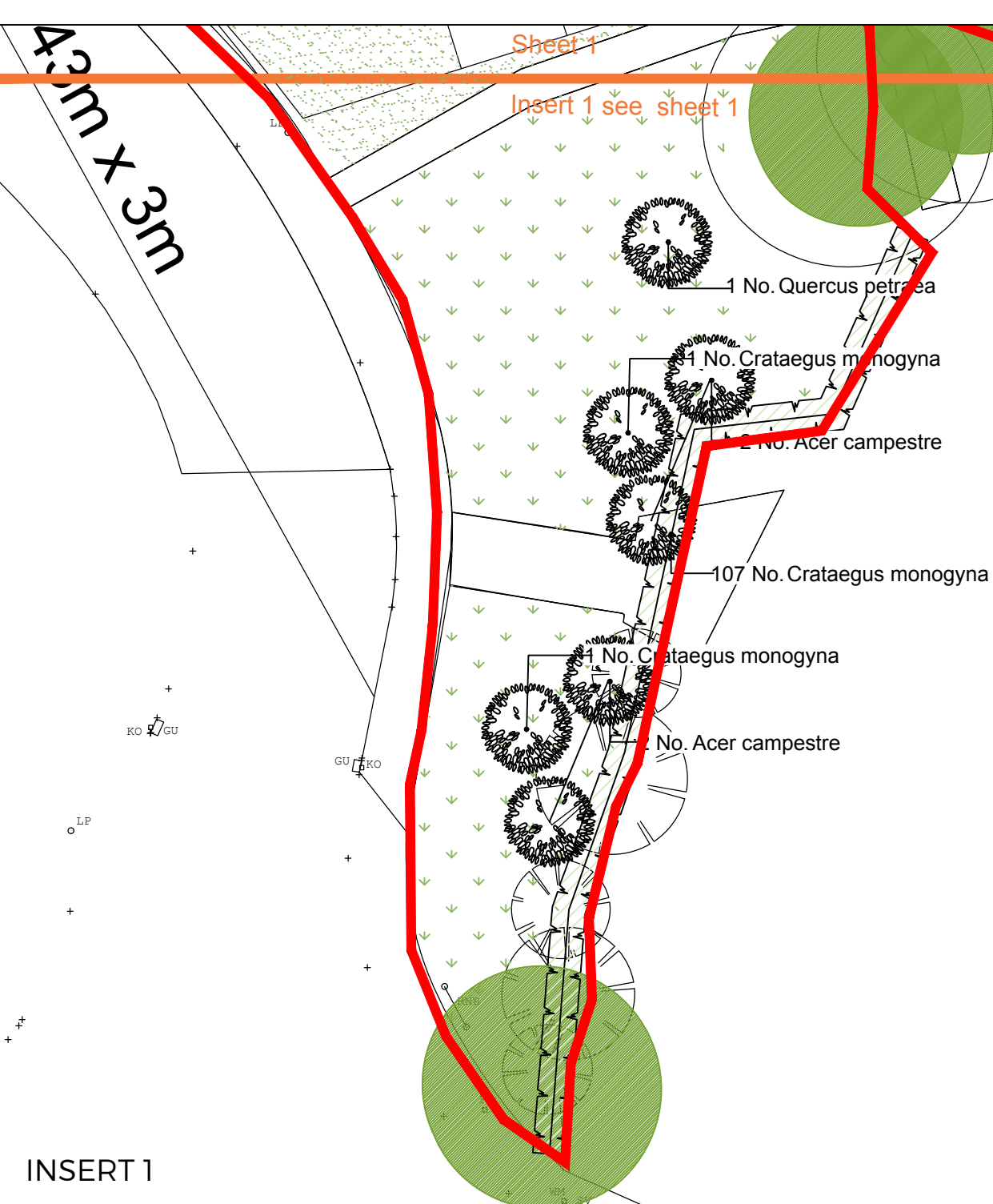
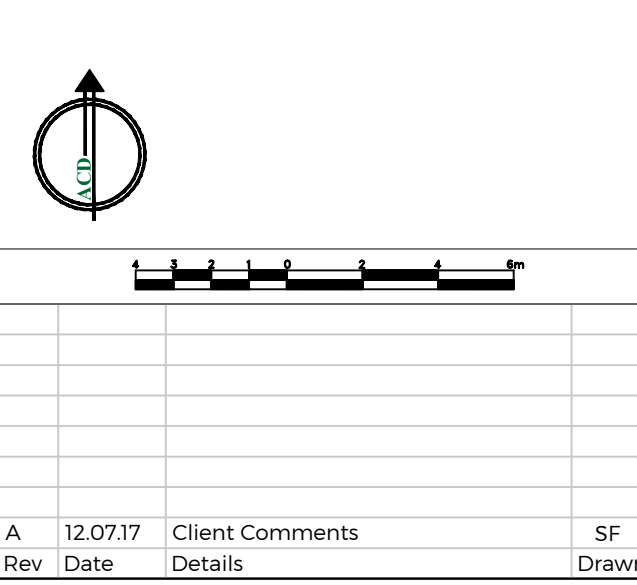


SPECIFICATION
All works generally, to comply with the written Soft Landscape Specification.

NOTE: DO NOT SCALE FROM DRAWING

Legend

- Existing trees to be retained and protected during construction
- Proposed tree planting within soft landscape. See detail on sheet 1
- Proposed specimen shrub planting to receive short angular staking on half standards with expandable tree ties. Irrigation tubing to root system of Amelanchier and Forsythia specimens as required
- Proposed climbing plants to be trained up adjacent wall/ fence/pergola with galvanised wires and hook set 250mm apart with support canes removed prior to planting
- Proposed hedge planting to be planted in a single row at 300mm centres
- Proposed hedge planting to be planted in a double staggered row 300mm apart and at 500mm centres in each row. To be maintained at 1m height
- Proposed native hedge planting to be planted in a double staggered row 300mm apart and at 500mm centres in each row. To be maintained at 1m height and 1.8m height adjacent to site boundaries
- Proposed shrub planting to receive 75mm bark mulch after planting operations
- Proposed decorative mix shrub planting to be planted in groups of 5-7no. of each species and as above
- Proposed native mix shrub planting to be planted in groups of 5-7no. of each species to receive suitable guarding
- Proposed grass areas to receive good quality amenity grass turves laid in line with good horticultural practices
- Proposed grassland areas, to be seeded with AM6 amenity lawn seed mix to be sown at 17.5kg/m2 as supplied by meadowmania.co.uk or similar
- Proposed wildflower areas, to be seeded with mead3 and wild3 general purpose wildflower seed mix to be sown at 4g/m2 as supplied by meadowmania.co.uk or similar
- Proposed wetland area to be seeded with mead3 and wild3 wetland wildflower seed mix to be sown at 4g/m2 as supplied by meadowmania.co.uk or similar
- Cut lines



ACD ENVIRONMENTAL
HEAD OFFICE
Rodbourne Rail Business Centre, Grange Lane,
Malmesbury, SN16 0ES
Tel: 01666 825646

Courtyard House, Mill Lane, Godalming, GU7 1EY
Tel: 01483 425714

Suite 6, Crescent House, Yonge Close, Eastleigh, SO50 9SX
Tel: 02382 026500

9 Brownlow Road, Cambridge, CB4 3NC
Tel: 07825 868654

email: mail@acdenv.co.uk
www.acdenvironmental.co.uk

Quattro designarchitects

scheme: Caerleon Road, Dinas Powys
client: Quattro Design Architects
drawing: Landscape Proposals
date: Jun. 2017
scale: 1:200@A1
drawing no: PR12173-11A sheet 1 of 3
drawn: JNT checked: JS

Copyright of ACD Environmental Ltd. All rights described in Chapter IV of the Copyright, Designs and Patents Act 1988 have been generally asserted. 2011. Copyright of this plan remains with ACD until all fees have been paid in full.