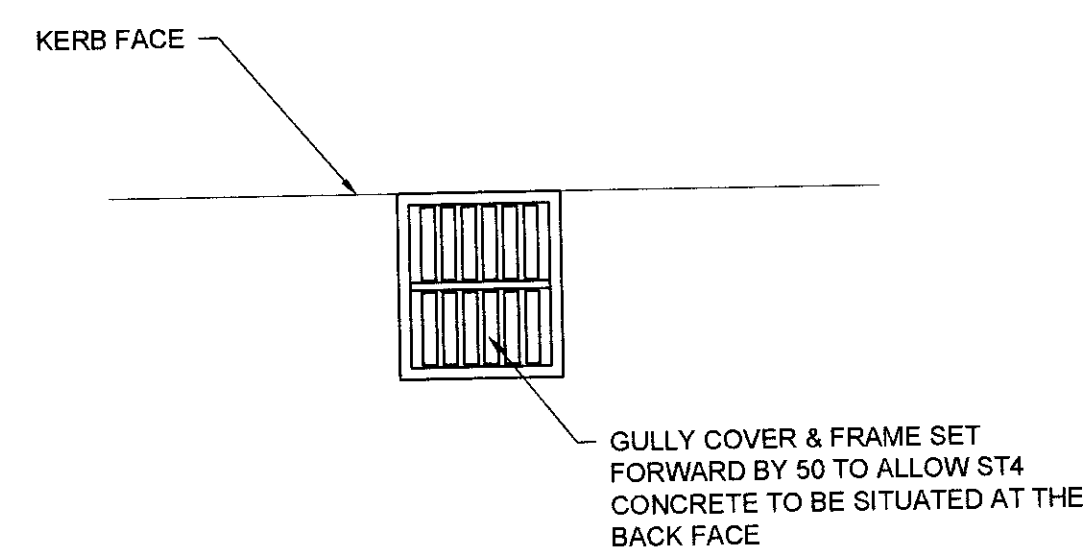
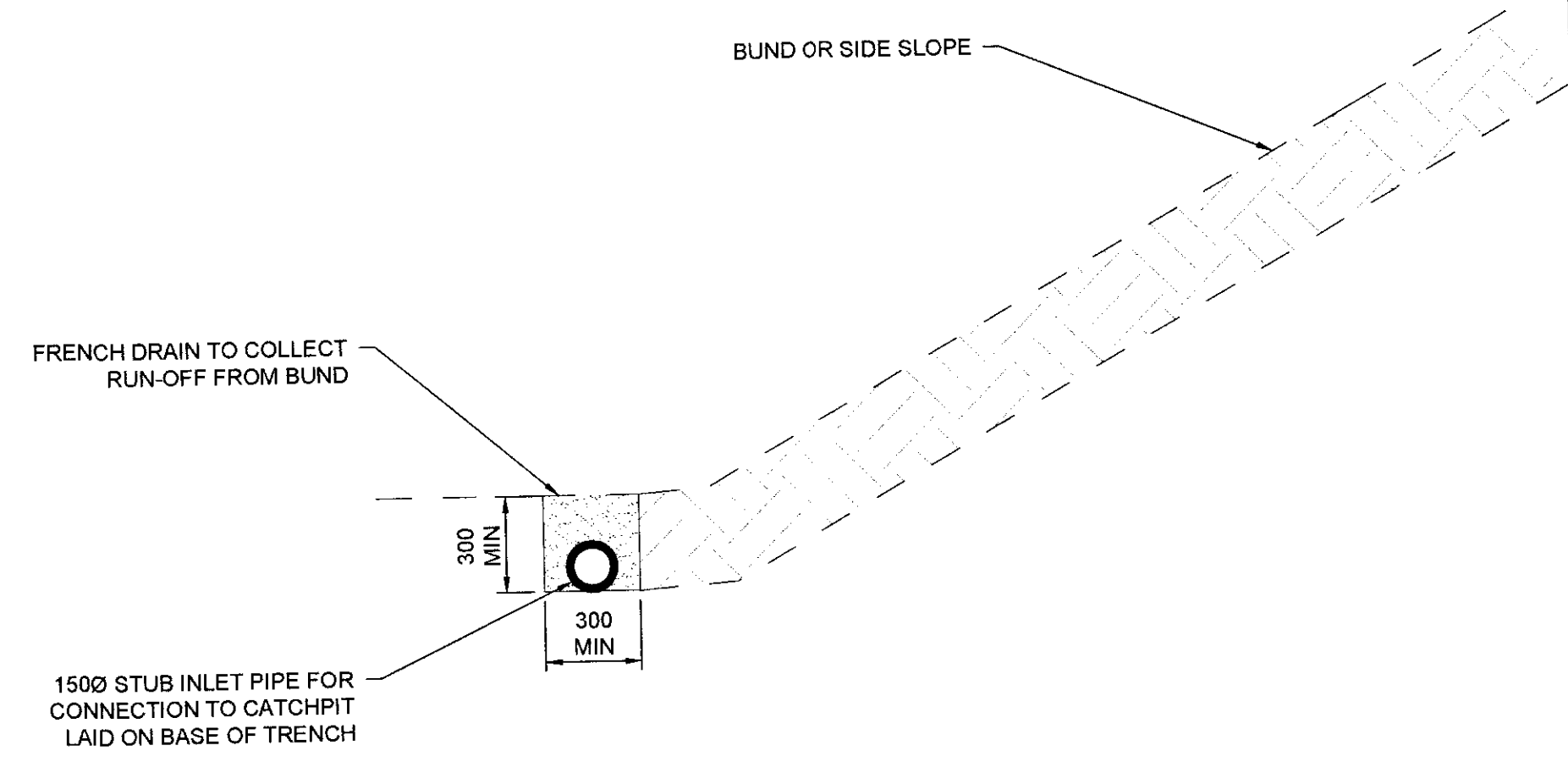
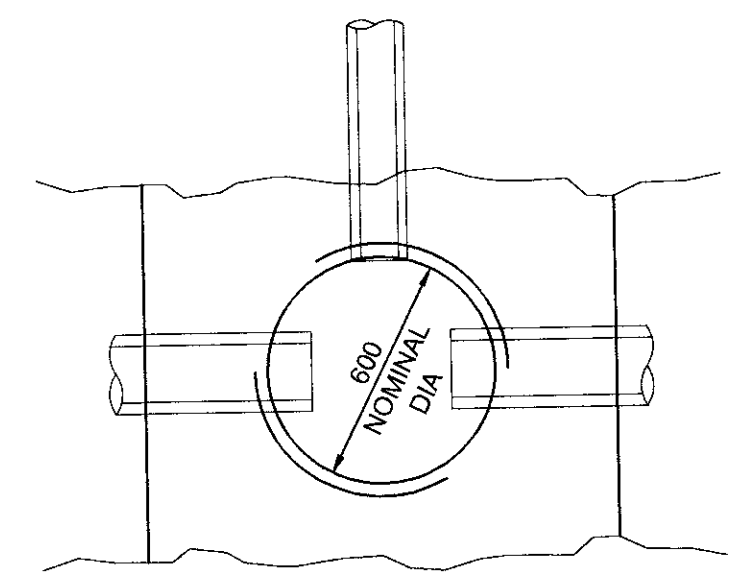
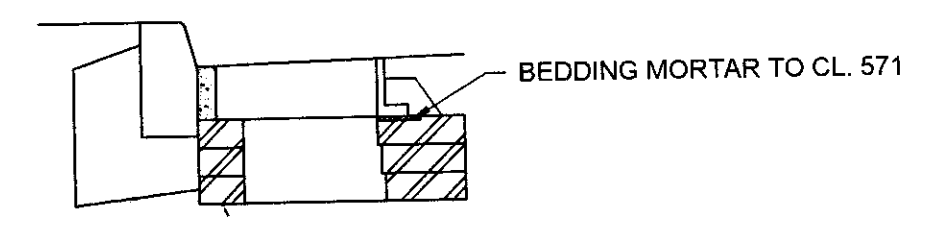


The copyright in this document (including its electronic form) shall remain vested in the Designer but the Client shall have a licence to copy and use the document for the purpose for which it was provided. The Designer shall not be liable for the use by any person of this document for any purpose other than that for which the same was provided by the Designer. This document shall not be reproduced in whole or in part or relied upon by third parties for any use whatsoever without the express written authority of the Designer.

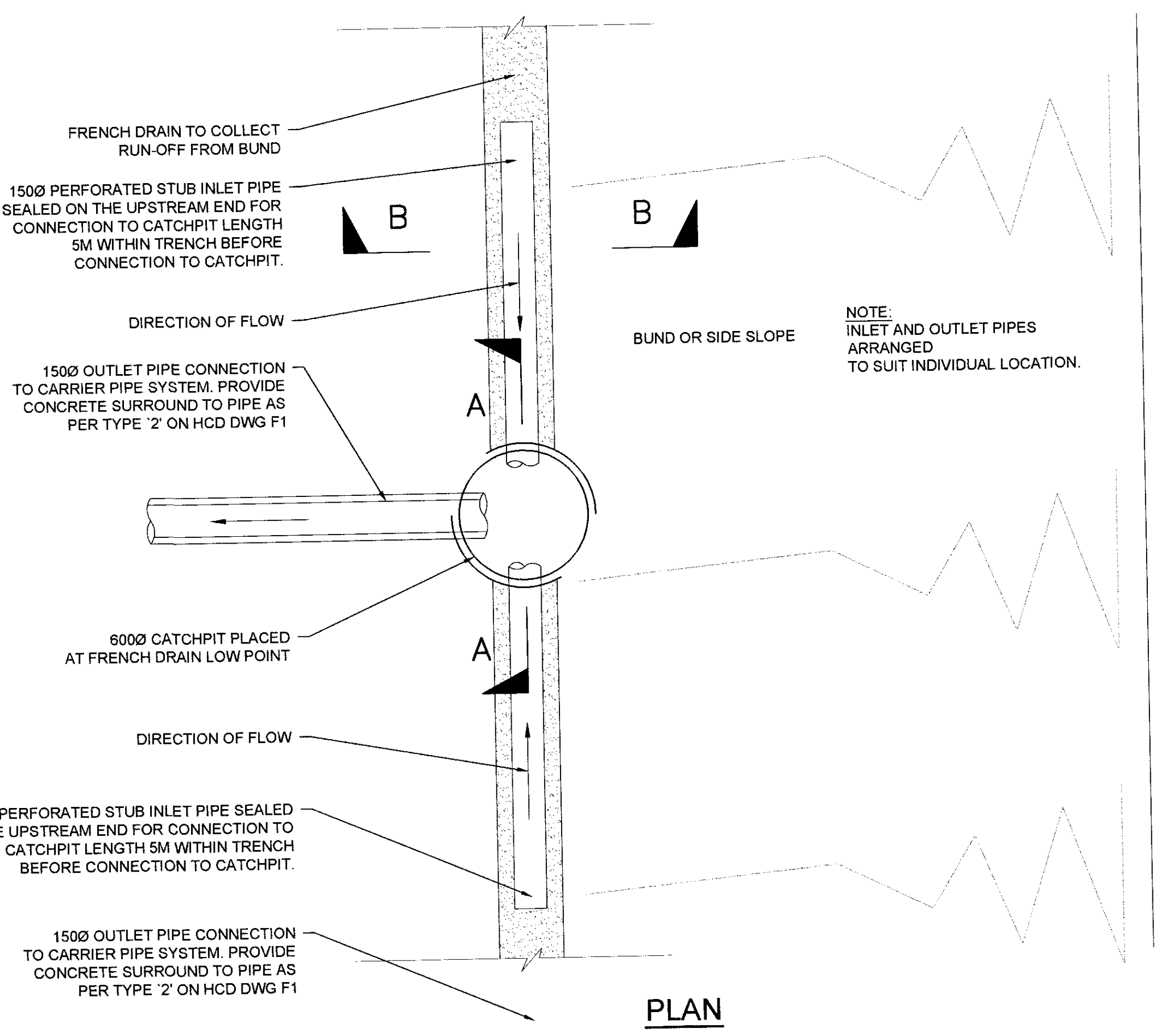
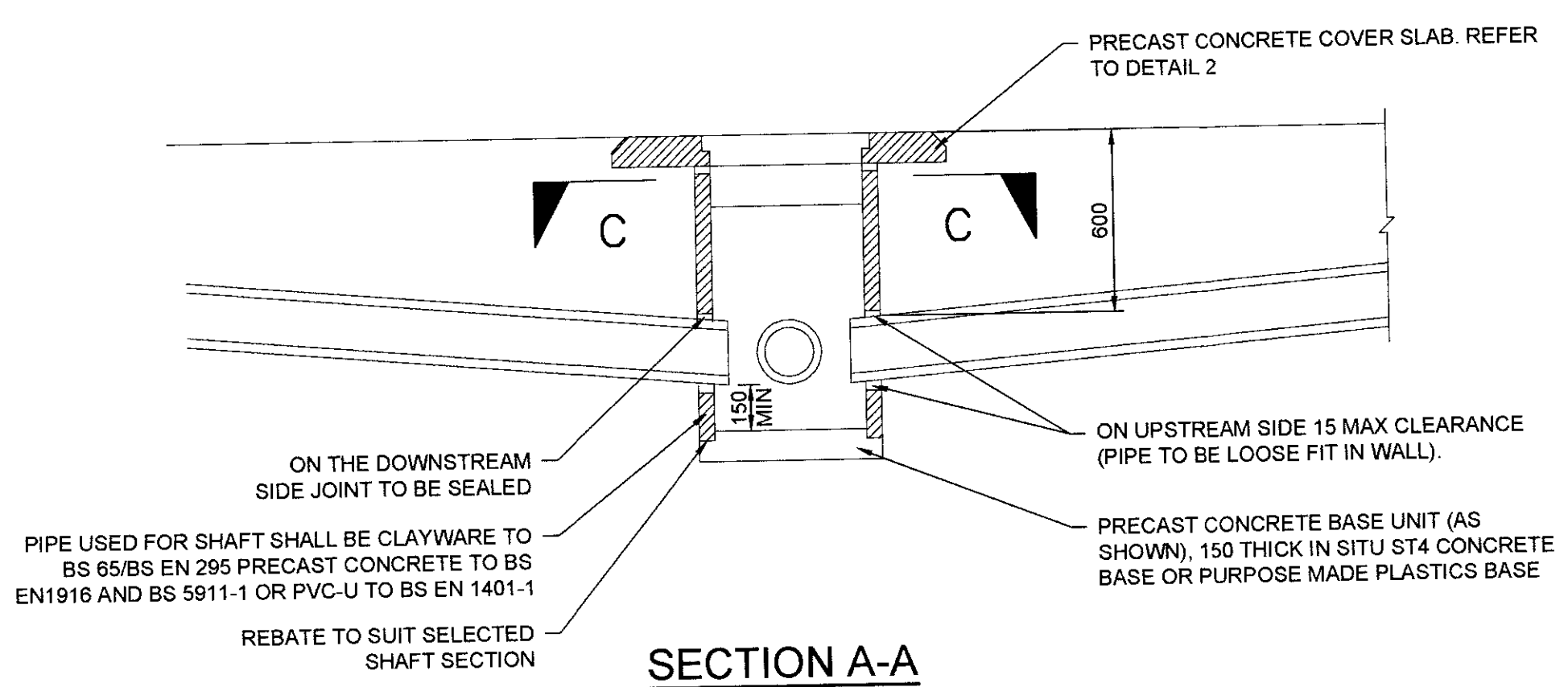


NOTES:

- ALL DIMENSIONS IN MILLIMETRES UNLESS NOTED OTHERWISE.
- DO NOT SCALE OFF THE DRAWING.
- FOR GENERAL DRAINAGE REQUIREMENTS REFER TO THE SPECIFICATION FOR HIGHWAY WORKS APPENDIX 5 AND DRAINAGE CONSTRUCTION SERIES OF DRAWINGS.
- FOR CATCHPIT DETAILS READ IN CONJUNCTION WITH HCD F12



GULLY COVER
SCALE 1:20 @ A1 / 1:40 @ A3



FRENCH DRAIN CONNECTION TO CATCHPIT
SCALE 1:20 @ A1 / 1:40 @ A3

RECEIVED
- 7 JUN 2017
Regeneration and Planning

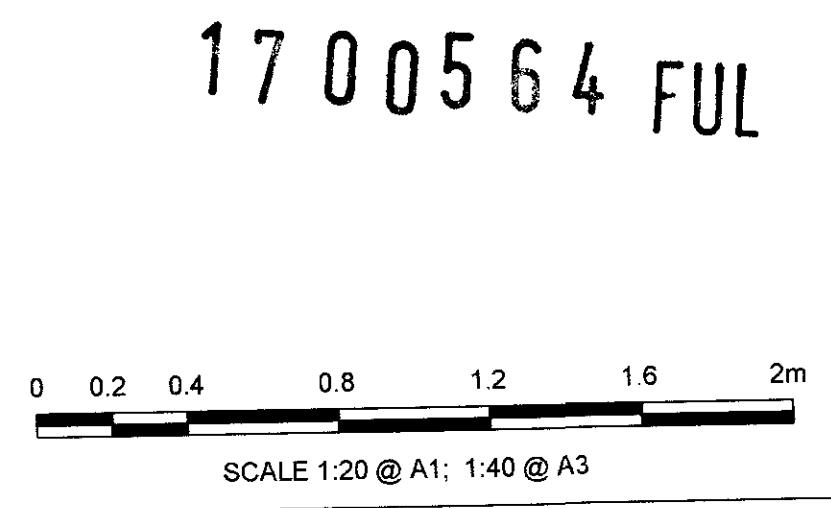
ISSUE/REVISION	DATE	DESCRIPTION
A	20-03-2017	FOR PLANNING
TR		

KEY PLAN

PROJECT NUMBER
60509148

SHEET TITLE
ST.ATHAN DRAINAGE TYPICAL DETAILS SHEET 8 OF 8

SHEET NUMBER
60509148-SHT-30-0000-CT-0528



ISO A1 584mm x 841mm
Project Management Initials: Designer: MHT Approved: RM
Checked: AT
Filename: F:\PROJECTS\HIGHWAYS - ST.ATHAN\03 EXECUTION\03 DOCUMENTS\03 CAD\01 WORKING DRAWINGS\0500 - DRAINAGE\STANDARD DETAILS\SHEET 8.DWG
Last saved by: TAYLOR12
Last Release: 2017-03-21