

ISO A1 60mm x 84mm
Project Management Initials: Designer: MH
Checked: AT
Approved: RM
File Name: F:\PROJECTS\HIGHWAYS - ST ATHAN\3 EXECUTION\3 Documents\08 CAD\01 WorkingDrawings\0500 - DRAINAGE\STANDARD DETAILS\Sheet 7.dwg
Last saved by: TAYLOR/D12
Last Printed: 2017-03-21
Printed on: P102 Consumable
Received: Collier/Cher



PROJECT
**ST. ATHAN
NORTHERN
ACCESS
ROAD**

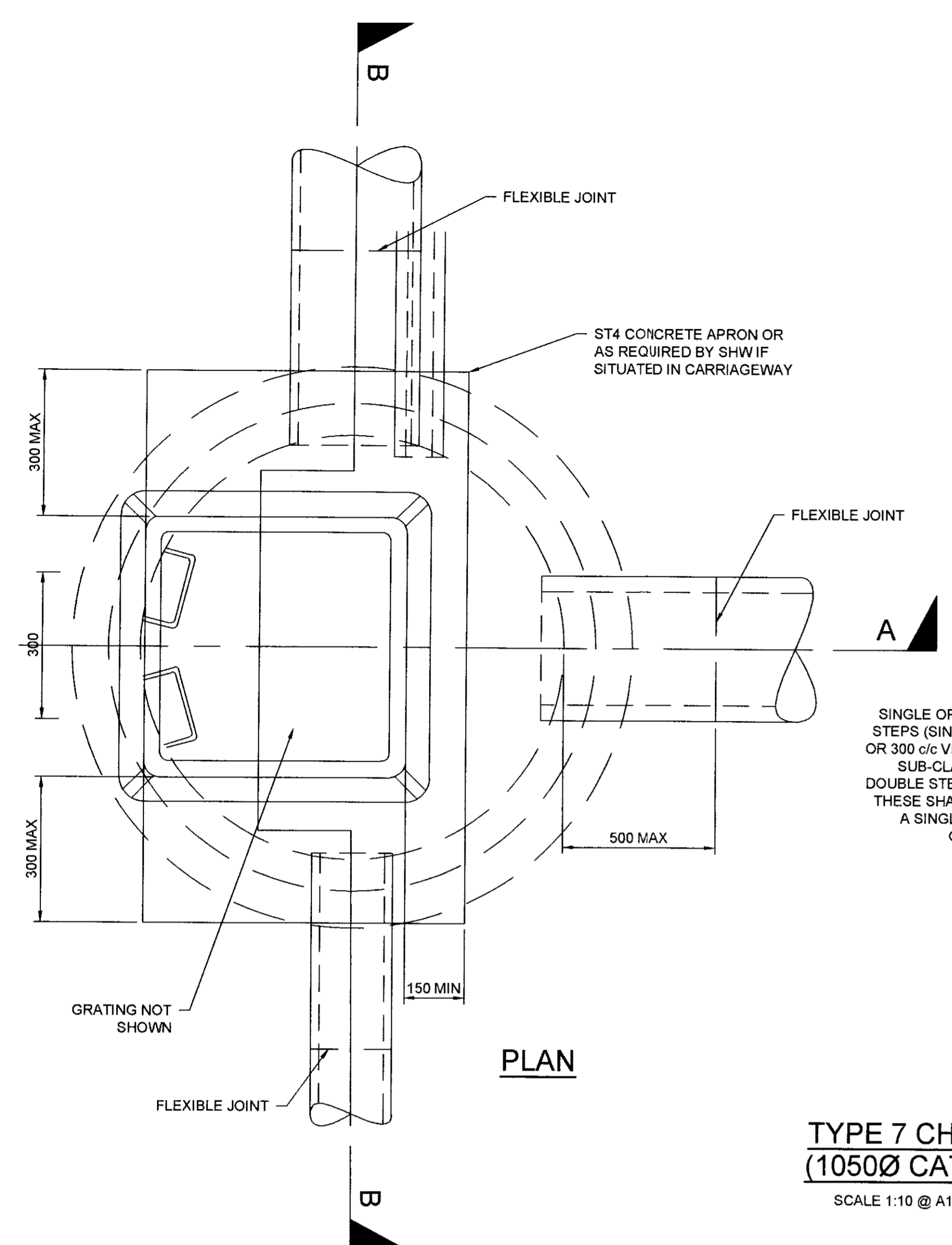
CLIENT
WELSH GOVERNMENT



Llywodraeth Cymru
Welsh Government

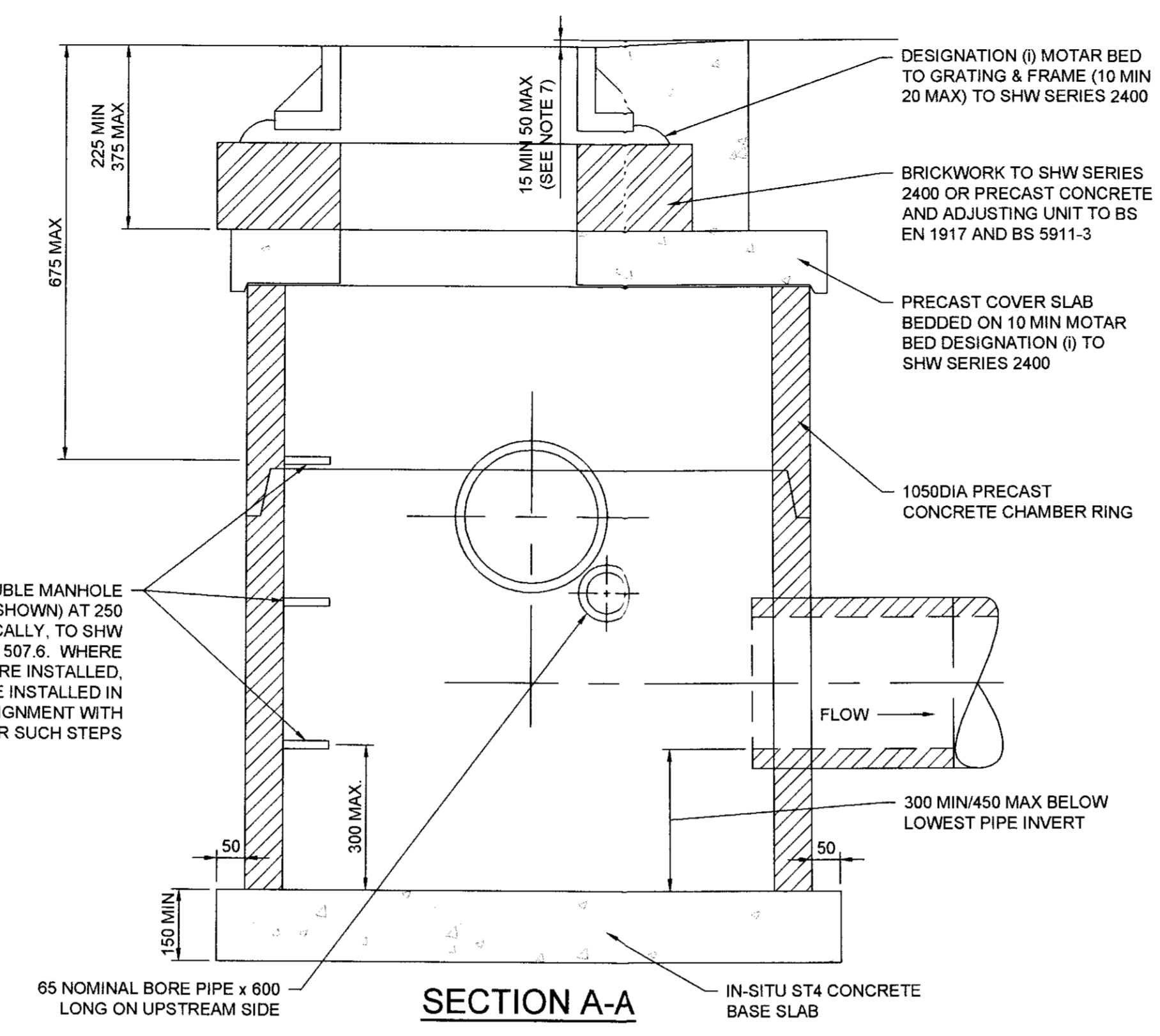
CONSULTANT
AECOM
1 CALLAGHAN SQUARE
CARDIFF
CF10 5BT
TEL: (029) 20674600
FAX: (029) 20674699

NOTES:
1. ALL DIMENSIONS ARE IN MILLIMETRES



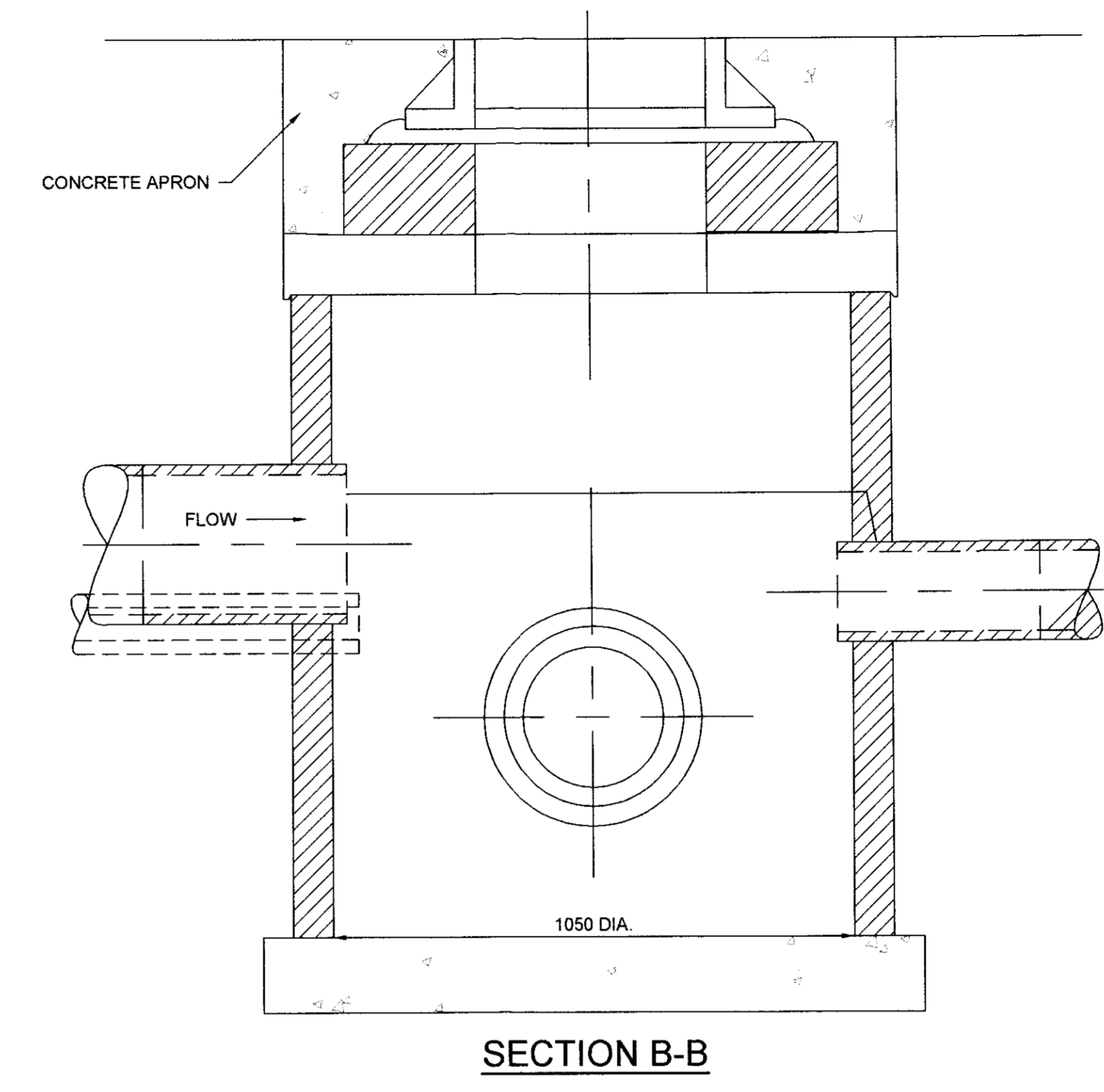
PLAN

**TYPE 7 CHAMBER
(1050Ø CATCHPIT)**
SCALE 1:10 @ A1 / 1:20 @ A3

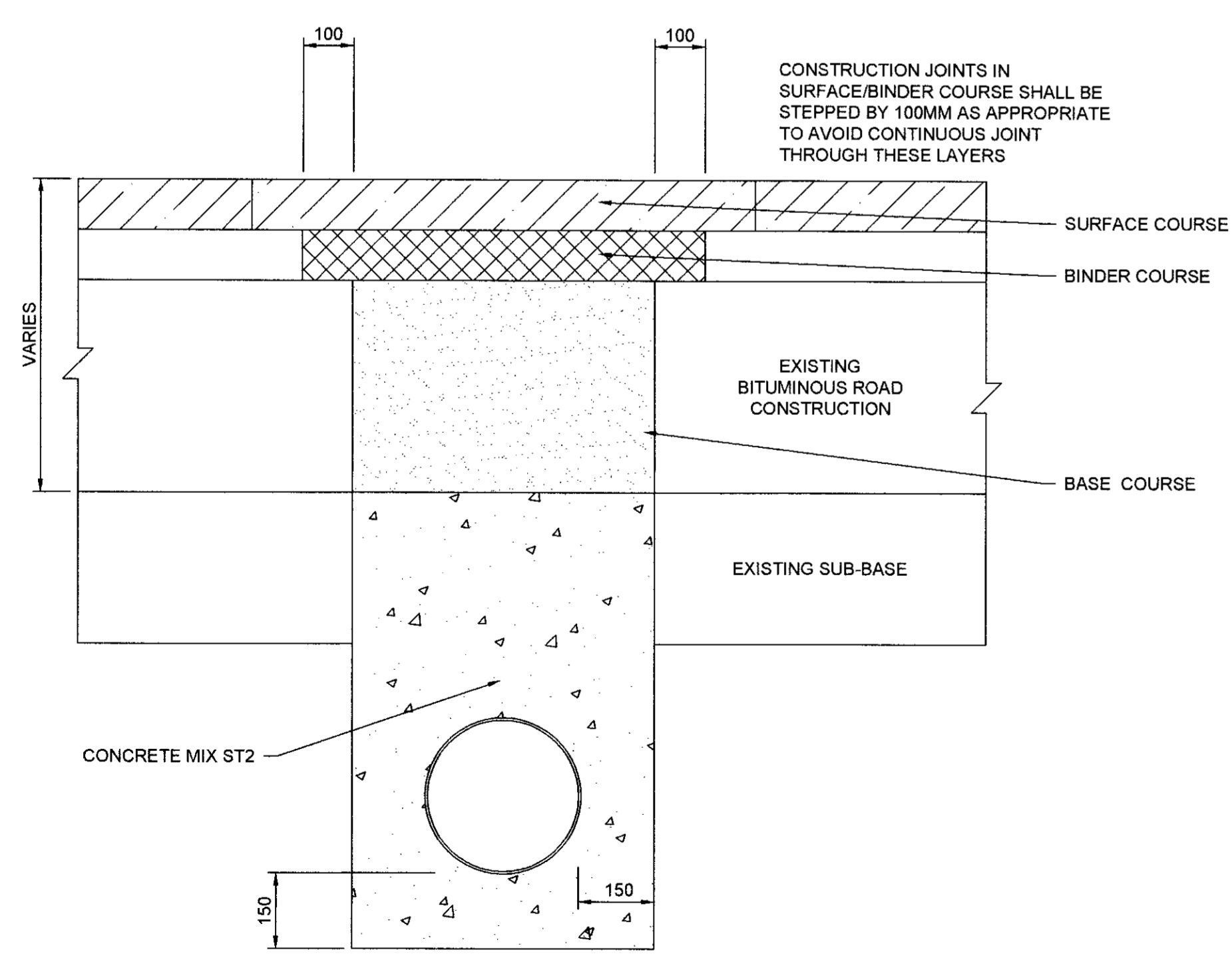


SECTION A-A

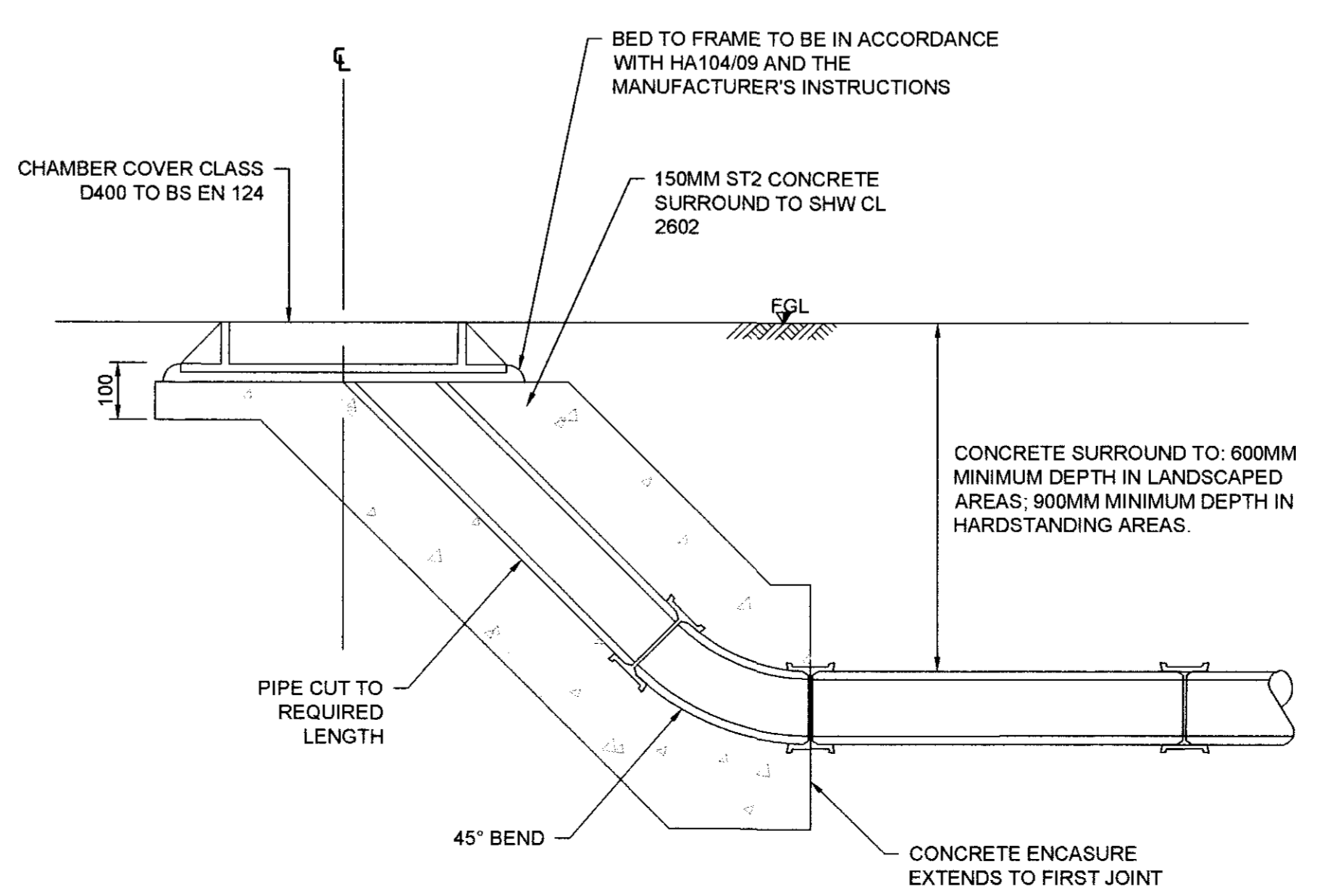
NOTE:
THE DETAILS FOR CATCHPITS OF 1200Ø & 1500Ø WILL BE THE SAME AS THE 1050Ø CATCHPIT EXCEPT FOR THE SIZE OF THE RINGS TOGETHER WITH THE BASE & COVER SLABS



SECTION B-B



**DRAINAGE CROSSING IN EXISTING
CARRIAGEWAY**
NOT TO SCALE



RODDING EYE DETAIL

SCALE 1:10 @ A1 / 1:20 @ A3



ISSUE/REVISION

NO	DATE	DESCRIPTION
A	20-03-2017	FOR PLANNING
1/1		

KEY PLAN

PROJECT NUMBER
60509148
SHEET TITLE
ST. ATHAN
DRAINAGE TYPICAL DETAILS
SHEET 7 OF 8
SHEET NUMBER
60509148-SHT-30-0000-CT-0527

