

Historical Mapping Legends

Ordnance Survey County Series 1:10,560

	Gravel Pit		Sand Pit		Other Pits
	Quarry		Shingle		Orchard
	Osiers		Reeds		Marsh
	Mixed Wood		Deciduous		Brushwood
	Fir		Furze		Rough Pasture
	Arrow denotes flow of water		Trigonometrical Station		
	Site of Antiquities		Bench Mark		
	Pump, Guide Post, Signal Post		Well, Spring, Boundary Post		
	-285 Surface Level				
	Sketched Contour		Instrumental Contour		
	Main Roads		Minor Roads		
	Sunken Road		Raised Road		
	Road over Railway		Railway over River		
	Railway over Road		Level Crossing		
	Road over River or Canal		Road over Stream		
	Road over Stream				
	County Boundary (Geographical)				
	County & Civil Parish Boundary				
	Administrative County & Civil Parish Boundary				
	County Borough Boundary (England)				
	County Burgh Boundary (Scotland)				
	Rural District Boundary				
	Civil Parish Boundary				

Ordnance Survey Plan 1:10,000

	Chalk Pit, Clay Pit or Quarry		Gravel Pit
	Sand Pit		Disused Pit or Quarry
	Refuse or Slag Heap		Lake, Loch or Pond
	Dunes		Boulders
	Coniferous Trees		Non-Coniferous Trees
	Orchard		Scrub
	Coppice		Bracken
	Heath		Rough Grassland
	Marsh		Reeds
	Saltings		
	Building		Glasshouse
	Sloping Masonry		Pylon
	Electricity Transmission Line		Pole
	Cutting		Embankment
	Standard Gauge Multiple Track		Standard Gauge Single Track
	Siding, Tramway or Mineral Line		Narrow Gauge
	Geographical County		
	Administrative County, County Borough or County of City		
	Municipal Borough, Urban or Rural District, Burgh or District Council		
	Borough, Burgh or County Constituency Shown only when not coincident with other boundaries		
	Civil Parish Shown alternately when coincidence of boundaries occurs		
	BP, BS Boundary Post or Stone		Pol Sta Police Station
	Ch Church		PO Post Office
	CH Club House		PC Public Convenience
	F E Sta Fire Engine Station		PH Public House
	FB Foot Bridge		SB Signal Box
	Fn Fountain		Spr Spring
	GP Guide Post		TCB Telephone Call Box
	MP Mile Post		TCP Telephone Call Post
	MS Mile Stone		W Well

1:10,000 Raster Mapping

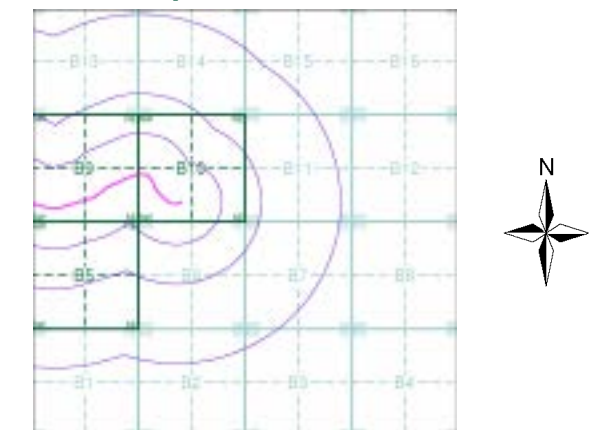
	Gravel Pit		Refuse tip or slag heap
	Rock		Rock (scattered)
	Boulders		Boulders (scattered)
	Shingle		Mud
	Sand		Sand Pit
	Slopes		Top of cliff
	General detail		Underground detail
	Overhead detail		Narrow gauge railway
	Multi-track railway		Single track railway
	County boundary (England only)		Civil, parish or community boundary
	District, Unitary, Metropolitan, London Borough boundary		Constituency boundary
	Area of wooded vegetation		Non-coniferous trees
	Non-coniferous trees (scattered)		Coniferous trees
	Coniferous trees (scattered)		Positioned tree
	Orchard		Coppice or Osiers
	Rough Grassland		Heath
	Scrub		Marsh, Salt Marsh or Reeds
	Water feature		Flow arrows
	MHW(S) Mean high water (springs)		MLW(S) Mean low water (springs)
	Telephone line (where shown)		Electricity transmission line (with poles)
	Bench mark (where shown)		Triangulation station
	Point feature (e.g. Guide Post or Mile Stone)		Pylon, flare stack or lighting tower
	Site of (antiquity)		Glasshouse
	General Building		Important Building



Historical Mapping & Photography included:

Mapping Type	Scale	Date	Pg
Glamorganshire	1:10,560	1885	2
Glamorganshire	1:10,560	1900	3
Glamorganshire	1:10,560	1921	4
Historical Aerial Photography Glamorganshire	1:10,560	1947	5
Glamorganshire	1:10,560	1951	6
Ordnance Survey Plan	1:10,000	1964	7
Ordnance Survey Plan	1:10,000	1969	8
Ordnance Survey Plan	1:10,000	1972 - 1975	9
Ordnance Survey Plan	1:10,000	1983 - 1984	10
Ordnance Survey Plan	1:10,000	1990	11
10K Raster Mapping	1:10,000	1999	12
Historical Aerial Photography	1:10,000	2000	13
10K Raster Mapping	1:10,000	2006	14
VectorMap Local	1:10,000	2016	15

Historical Map - Slice B



Order Details

Order Number: 91812710_1_1
 Customer Ref: 60509148
 National Grid Reference: 300530, 169230
 Slice: B
 Site Area (Ha): 3.32
 Search Buffer (m): 1000

Site Details

St Athan Route, Cowbridge, South Glamorgan, CF71 7EQ



Tel: 0844 844 9952
 Fax: 0844 844 9951
 Web: www.envirocheck.co.uk

Glamorganshire

Published 1885

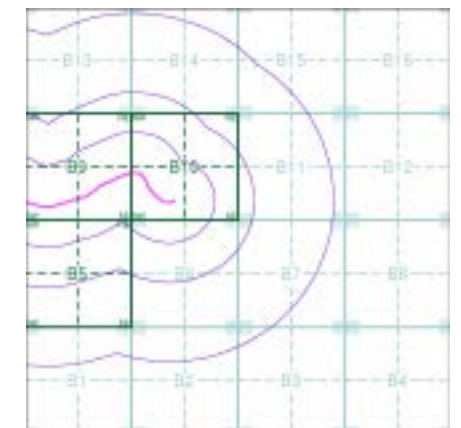
Source map scale - 1:10,560

The historical maps shown were reproduced from maps predominantly held at the scale adopted for England, Wales and Scotland in the 1840's. In 1854 the 1:2,500 scale was adopted for mapping urban areas; these maps were used to update the 1:10,560 maps. The published date given therefore is often some years later than the surveyed date. Before 1938, all OS maps were based on the Cassini Projection, with independent surveys of a single county or group of counties, giving rise to significant inaccuracies in outlying areas. In the late 1940's, a Provisional Edition was produced, which updated the 1:10,560 mapping from a number of sources. The maps appear unfinished - with all military camps and other strategic sites removed. These maps were initially overprinted with the National Grid. In 1970, the first 1:10,000 maps were produced using the Transverse Mercator Projection. The revision process continued until recently, with new editions appearing every 10 years or so for urban areas.

Map Name(s) and Date(s)

04500	1885	1:10,560
04900	1885	1:10,560

Historical Map - Slice B

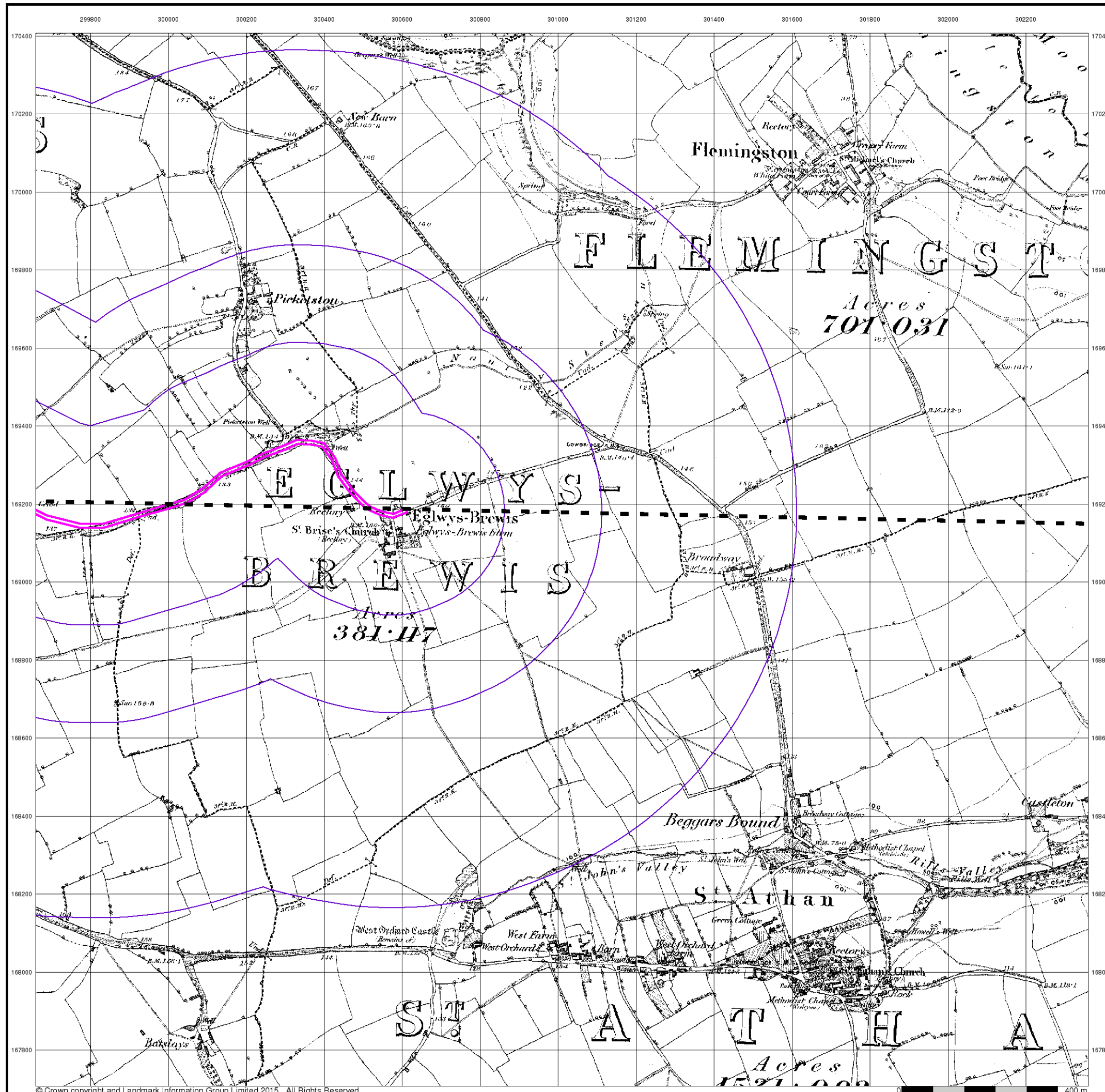


Order Details

Order Number: 91812710_1_1
 Customer Ref: 60509148
 National Grid Reference: 300530, 169230
 Slice: B
 Site Area (Ha): 3.32
 Search Buffer (m): 1000

Site Details

St Athan Route, Cowbridge, South Glamorgan, CF71 7EQ



Glamorganshire

Published 1900

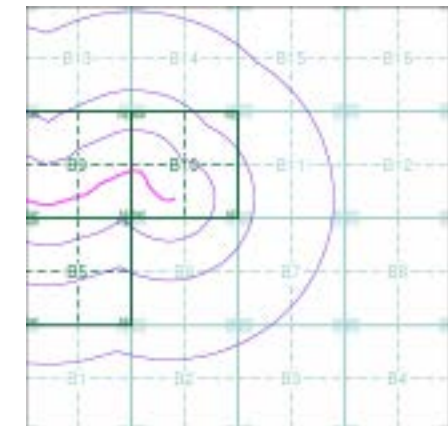
Source map scale - 1:10,560

The historical maps shown were reproduced from maps predominantly held at the scale adopted for England, Wales and Scotland in the 1840's. In 1854 the 1:2,500 scale was adopted for mapping urban areas; these maps were used to update the 1:10,560 maps. The published date given therefore is often some years later than the surveyed date. Before 1938, all OS maps were based on the Cassini Projection, with independent surveys of a single county or group of counties, giving rise to significant inaccuracies in outlying areas. In the late 1940's, a Provisional Edition was produced, which updated the 1:10,560 mapping from a number of sources. The maps appear unfinished - with all military camps and other strategic sites removed. These maps were initially overprinted with the National Grid. In 1970, the first 1:10,000 maps were produced using the Transverse Mercator Projection. The revision process continued until recently, with new editions appearing every 10 years or so for urban areas.

Map Name(s) and Date(s)

045SE	1900	1:10,560
049NE	1900	1:10,560

Historical Map - Slice B

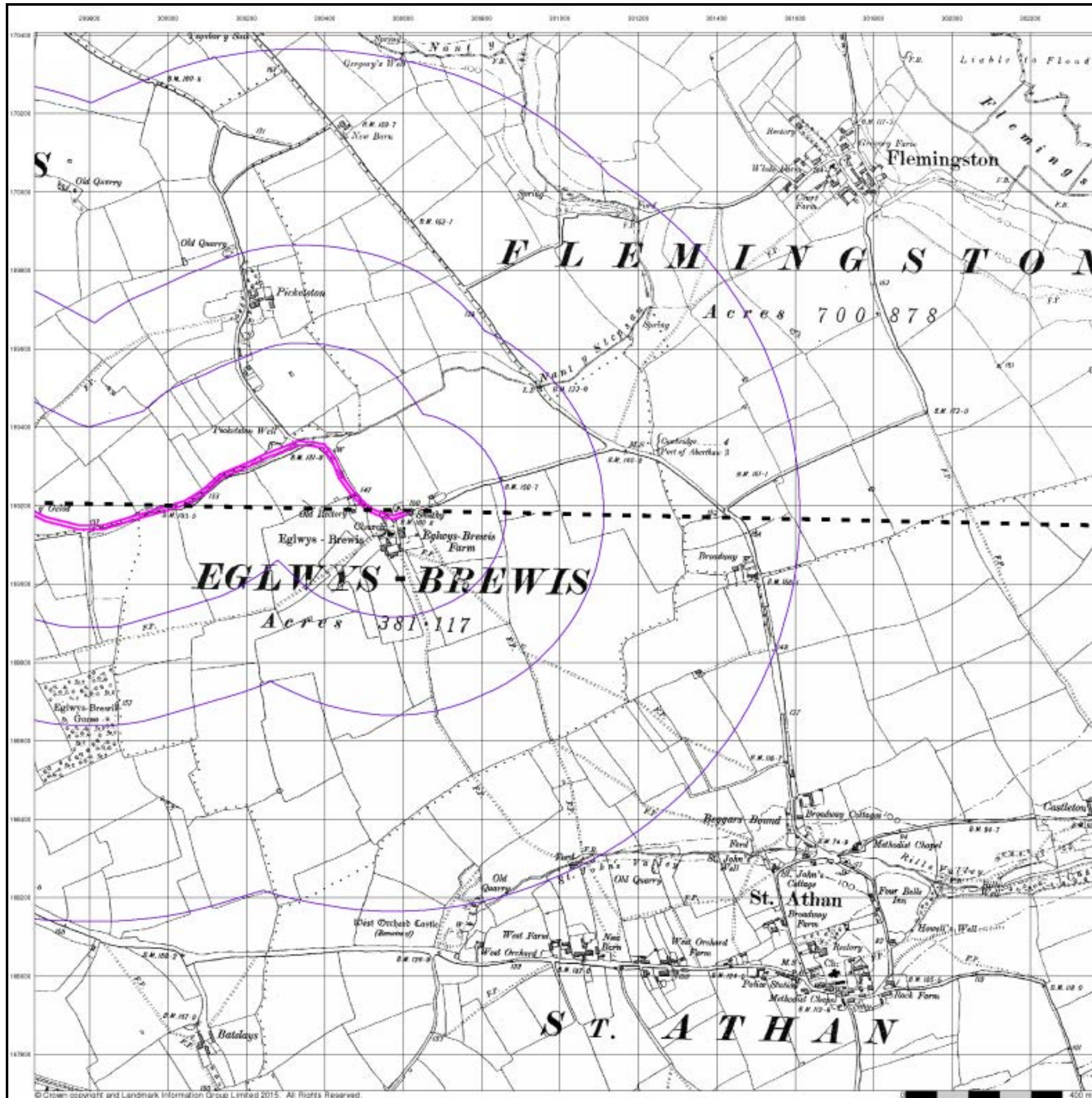


Order Details

Order Number: 91812710_1_1
 Customer Ref: 60509148
 National Grid Reference: 300530, 169230
 Slice: B
 Site Area (Ha): 3.32
 Search Buffer (m): 1000

Site Details

St Athan Route, Cowbridge, South Glamorgan, CF71 7EQ



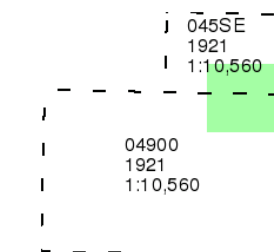
Glamorganshire

Published 1921

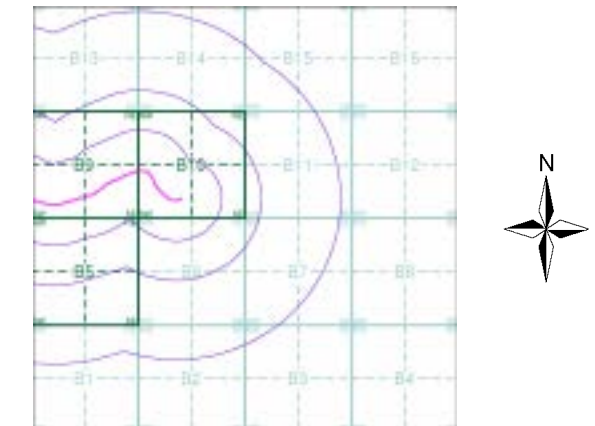
Source map scale - 1:10,560

The historical maps shown were reproduced from maps predominantly held at the scale adopted for England, Wales and Scotland in the 1840's. In 1854 the 1:2,500 scale was adopted for mapping urban areas; these maps were used to update the 1:10,560 maps. The published date given therefore is often some years later than the surveyed date. Before 1938, all OS maps were based on the Cassini Projection, with independent surveys of a single county or group of counties, giving rise to significant inaccuracies in outlying areas. In the late 1940's, a Provisional Edition was produced, which updated the 1:10,560 mapping from a number of sources. The maps appear unfinished - with all military camps and other strategic sites removed. These maps were initially overprinted with the National Grid. In 1970, the first 1:10,000 maps were produced using the Transverse Mercator Projection. The revision process continued until recently, with new editions appearing every 10 years or so for urban areas.

Map Name(s) and Date(s)



Historical Map - Slice B

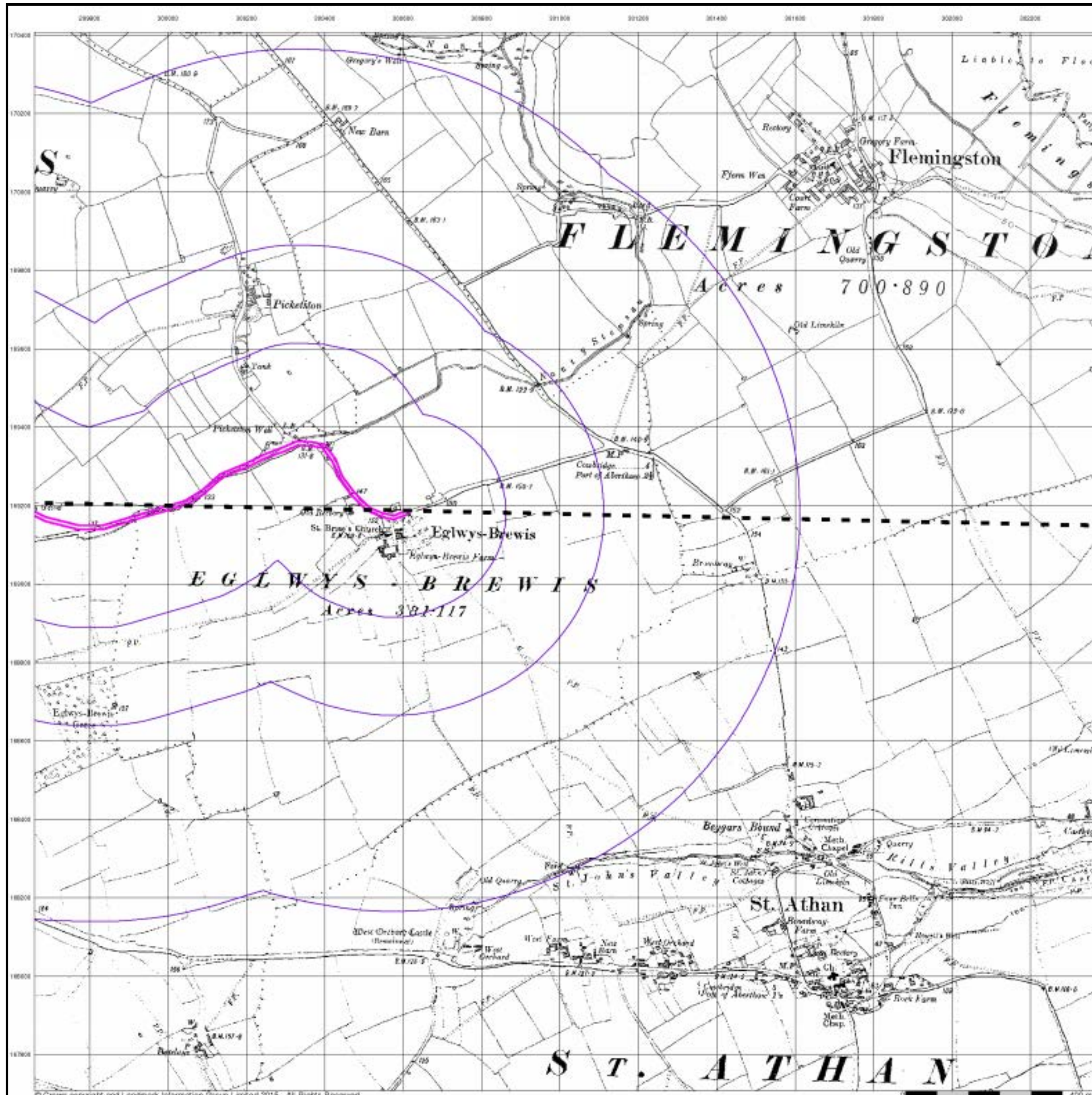


Order Details

Order Number: 91812710_1_1
 Customer Ref: 60509148
 National Grid Reference: 300530, 169230
 Slice: B
 Site Area (Ha): 3.32
 Search Buffer (m): 1000

Site Details

St Athan Route, Cowbridge, South Glamorgan, CF71 7EQ



Historical Aerial Photography

Published 1947

Source map scale - 1:10,560

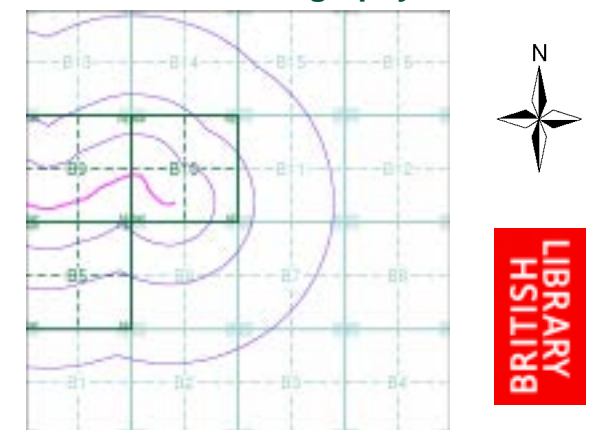
The Historical Aerial Photos were produced by the Ordnance Survey at a scale of 1:1,250 and 1:10,560 from Air Force photography. They were produced between 1944 and 1951 as an interim measure, pending preparation of conventional mapping, due to post war resource shortages. New security measures in the 1950's meant that every photograph was re-checked for potentially unsafe information with security sites replaced by fake fields or clouds. The original editions were withdrawn and only later made available after a period of fifty years although due to the accuracy of the editing, without viewing both revisions it is not easy to spot the edits. Where available Landmark have included both revisions.

© Landmark Information Group and/or Data Suppliers 2010.

Map Name(s) and Date(s)

SS97SE 1947 1:10,560	ST07SW 1947 1:10,560
SS96NE 1947 1:10,560	ST06NW 1947 1:10,560

Historical Aerial Photography - Slice B

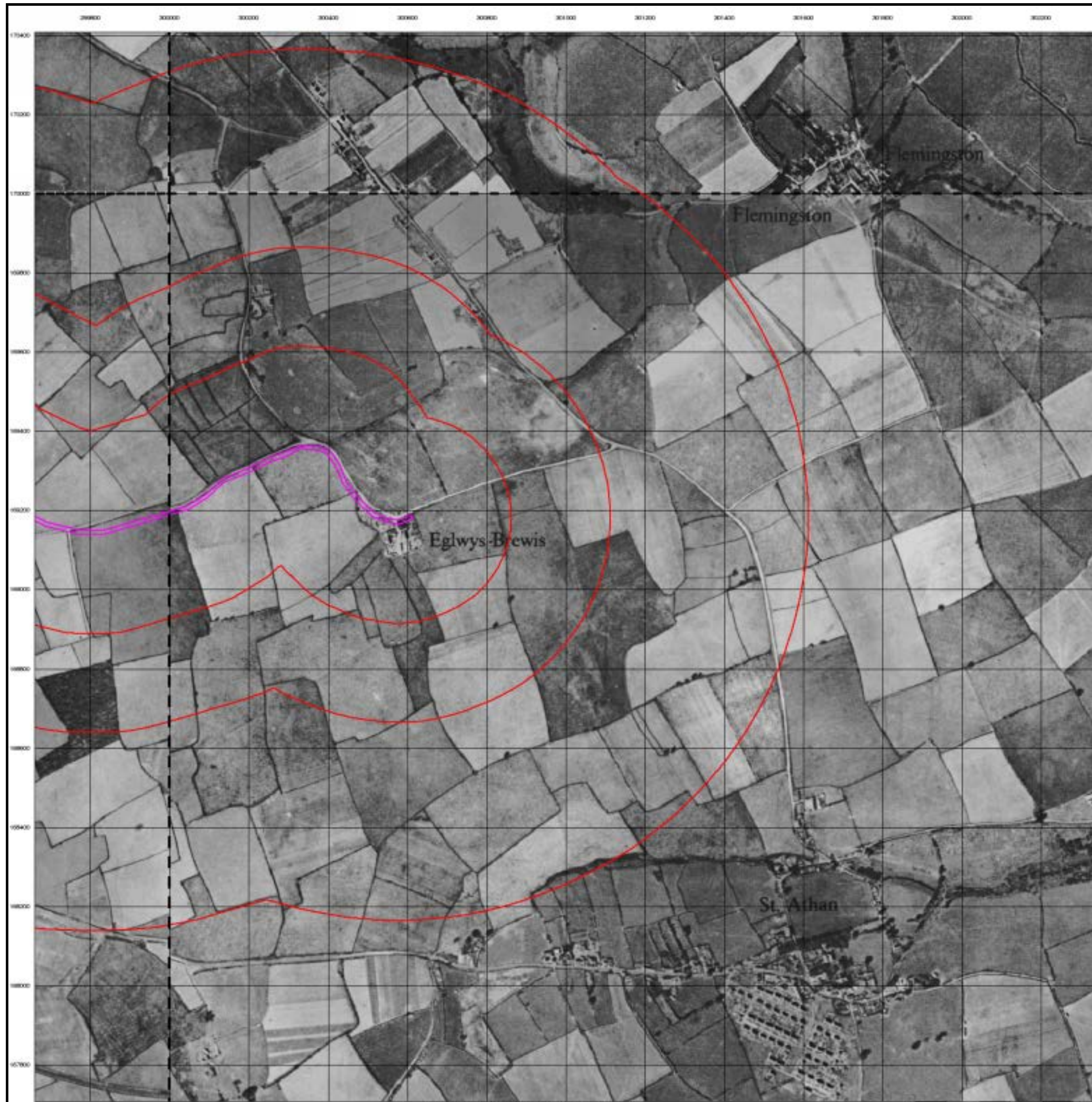


Order Details

Order Number: 91812710_1_1
 Customer Ref: 60509148
 National Grid Reference: 300530, 169230
 Slice: B
 Site Area (Ha): 3.32
 Search Buffer (m): 1000

Site Details

St Athan Route, Cowbridge, South Glamorgan, CF71 7EQ



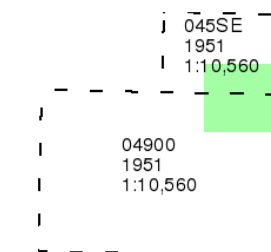
Glamorganshire

Published 1951

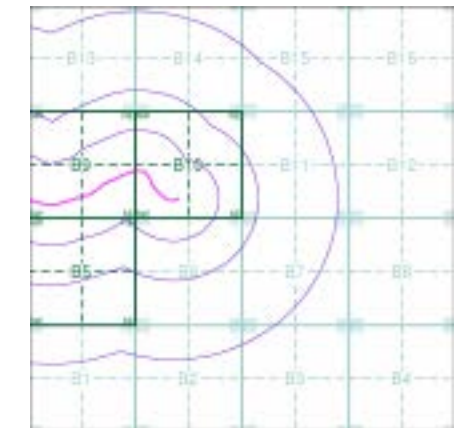
Source map scale - 1:10,560

The historical maps shown were reproduced from maps predominantly held at the scale adopted for England, Wales and Scotland in the 1840's. In 1854 the 1:2,500 scale was adopted for mapping urban areas; these maps were used to update the 1:10,560 maps. The published date given therefore is often some years later than the surveyed date. Before 1938, all OS maps were based on the Cassini Projection, with independent surveys of a single county or group of counties, giving rise to significant inaccuracies in outlying areas. In the late 1940's, a Provisional Edition was produced, which updated the 1:10,560 mapping from a number of sources. The maps appear unfinished - with all military camps and other strategic sites removed. These maps were initially overprinted with the National Grid. In 1970, the first 1:10,000 maps were produced using the Transverse Mercator Projection. The revision process continued until recently, with new editions appearing every 10 years or so for urban areas.

Map Name(s) and Date(s)



Historical Map - Slice B

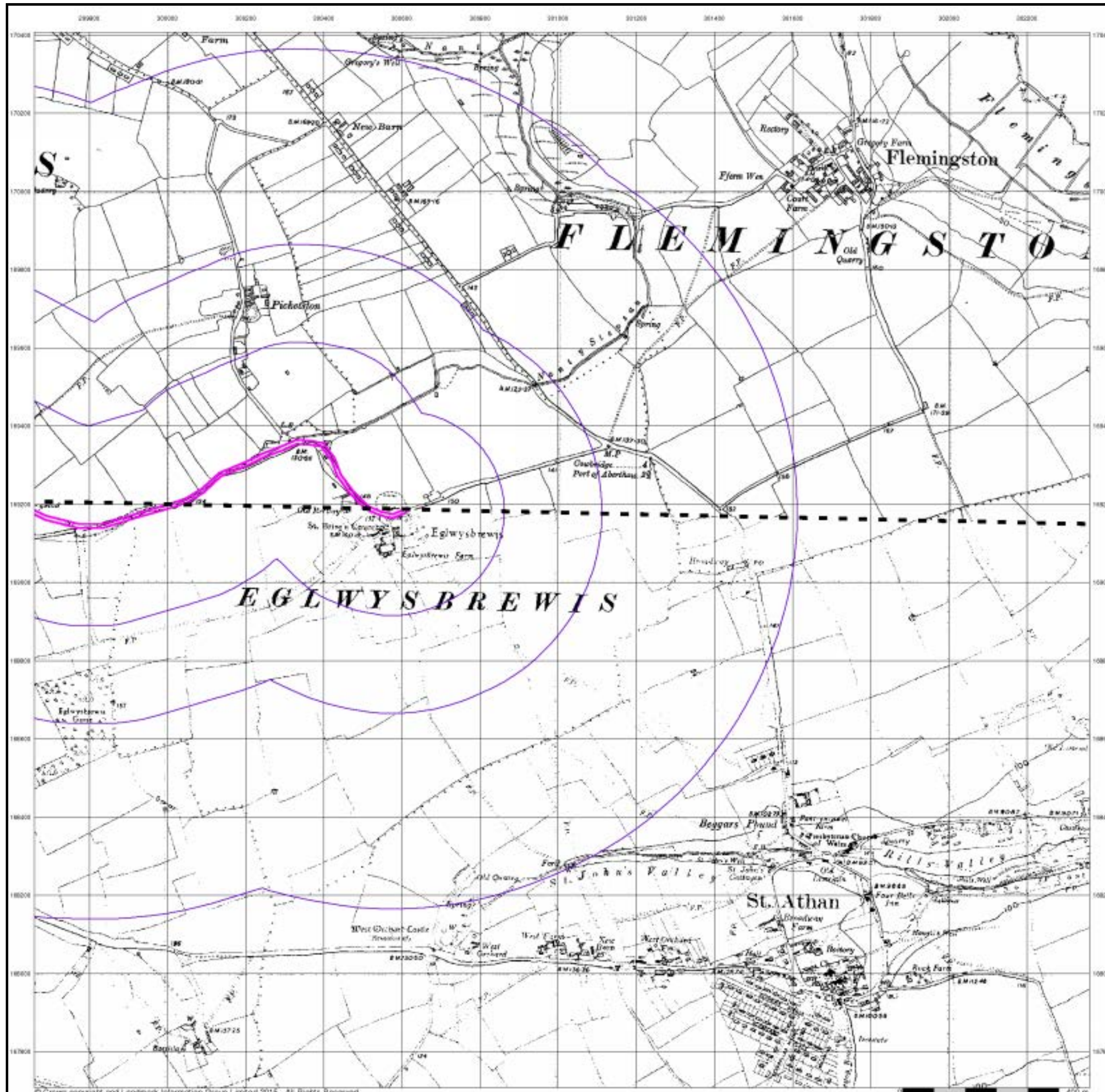


Order Details

Order Number: 91812710_1_1
 Customer Ref: 60509148
 National Grid Reference: 300530, 169230
 Slice: B
 Site Area (Ha): 3.32
 Search Buffer (m): 1000

Site Details

St Athan Route, Cowbridge, South Glamorgan, CF71 7EQ



Ordnance Survey Plan

Published 1964

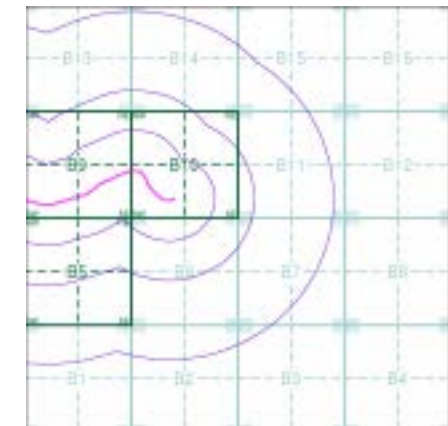
Source map scale - 1:10,000

The historical maps shown were reproduced from maps predominantly held at the scale adopted for England, Wales and Scotland in the 1840's. In 1854 the 1:2,500 scale was adopted for mapping urban areas; these maps were used to update the 1:10,560 maps. The published date given therefore is often some years later than the surveyed date. Before 1938, all OS maps were based on the Cassini Projection, with independent surveys of a single county or group of counties, giving rise to significant inaccuracies in outlying areas. In the late 1940's, a Provisional Edition was produced, which updated the 1:10,560 mapping from a number of sources. The maps appear unfinished - with all military camps and other strategic sites removed. These maps were initially overprinted with the National Grid. In 1970, the first 1:10,000 maps were produced using the Transverse Mercator Projection. The revision process continued until recently, with new editions appearing every 10 years or so for urban areas.

Map Name(s) and Date(s)

SS97SE	ST07SW
1964	1964
1:10,560	1:10,560
SS96NE	ST06NW
1964	1964
1:10,560	1:10,560

Historical Map - Slice B

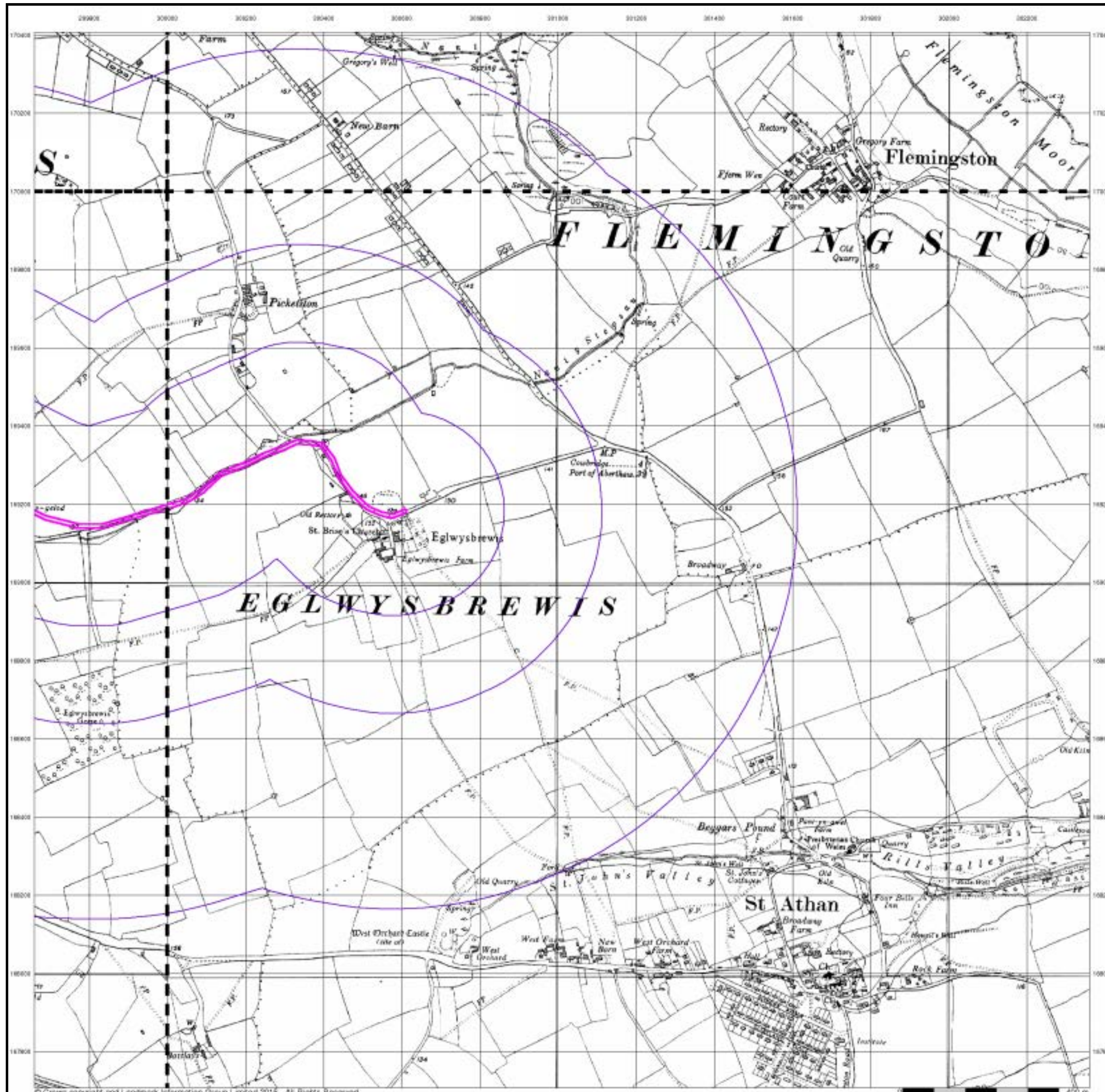


Order Details

Order Number: 91812710_1_1
 Customer Ref: 60509148
 National Grid Reference: 300530, 169230
 Slice: B
 Site Area (Ha): 3.32
 Search Buffer (m): 1000

Site Details

St Athan Route, Cowbridge, South Glamorgan, CF71 7EQ



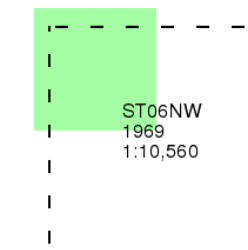
Ordnance Survey Plan

Published 1969

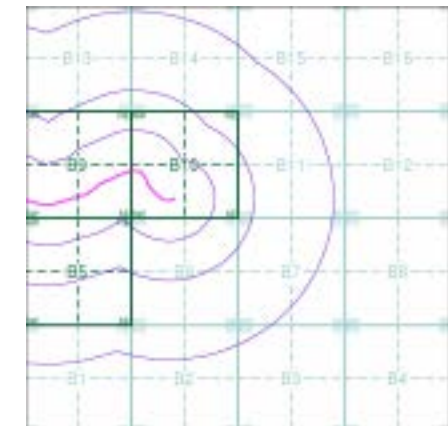
Source map scale - 1:10,000

The historical maps shown were reproduced from maps predominantly held at the scale adopted for England, Wales and Scotland in the 1840's. In 1854 the 1:2,500 scale was adopted for mapping urban areas; these maps were used to update the 1:10,560 maps. The published date given therefore is often some years later than the surveyed date. Before 1938, all OS maps were based on the Cassini Projection, with independent surveys of a single county or group of counties, giving rise to significant inaccuracies in outlying areas. In the late 1940's, a Provisional Edition was produced, which updated the 1:10,560 mapping from a number of sources. The maps appear unfinished - with all military camps and other strategic sites removed. These maps were initially overprinted with the National Grid. In 1970, the first 1:10,000 maps were produced using the Transverse Mercator Projection. The revision process continued until recently, with new editions appearing every 10 years or so for urban areas.

Map Name(s) and Date(s)



Historical Map - Slice B



Order Details

Order Number: 91812710_1_1
 Customer Ref: 60509148
 National Grid Reference: 300530, 169230
 Slice: B
 Site Area (Ha): 3.32
 Search Buffer (m): 1000

Site Details

St Athan Route, Cowbridge, South Glamorgan, CF71 7EQ



Ordnance Survey Plan

Published 1972 - 1975

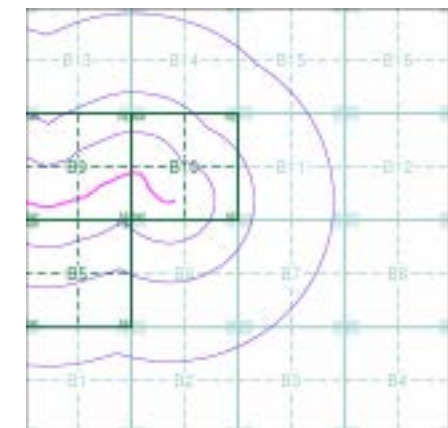
Source map scale - 1:10,000

The historical maps shown were reproduced from maps predominantly held at the scale adopted for England, Wales and Scotland in the 1840's. In 1854 the 1:2,500 scale was adopted for mapping urban areas; these maps were used to update the 1:10,560 maps. The published date given therefore is often some years later than the surveyed date. Before 1938, all OS maps were based on the Cassini Projection, with independent surveys of a single county or group of counties, giving rise to significant inaccuracies in outlying areas. In the late 1940's, a Provisional Edition was produced, which updated the 1:10,560 mapping from a number of sources. The maps appear unfinished - with all military camps and other strategic sites removed. These maps were initially overprinted with the National Grid. In 1970, the first 1:10,000 maps were produced using the Transverse Mercator Projection. The revision process continued until recently, with new editions appearing every 10 years or so for urban areas.

Map Name(s) and Date(s)

SS97SE	ST07SW
1972	1974
1:10,000	1:10,000
SS96NE	ST06NW
1974	1975
1:10,000	1:10,000

Historical Map - Slice B

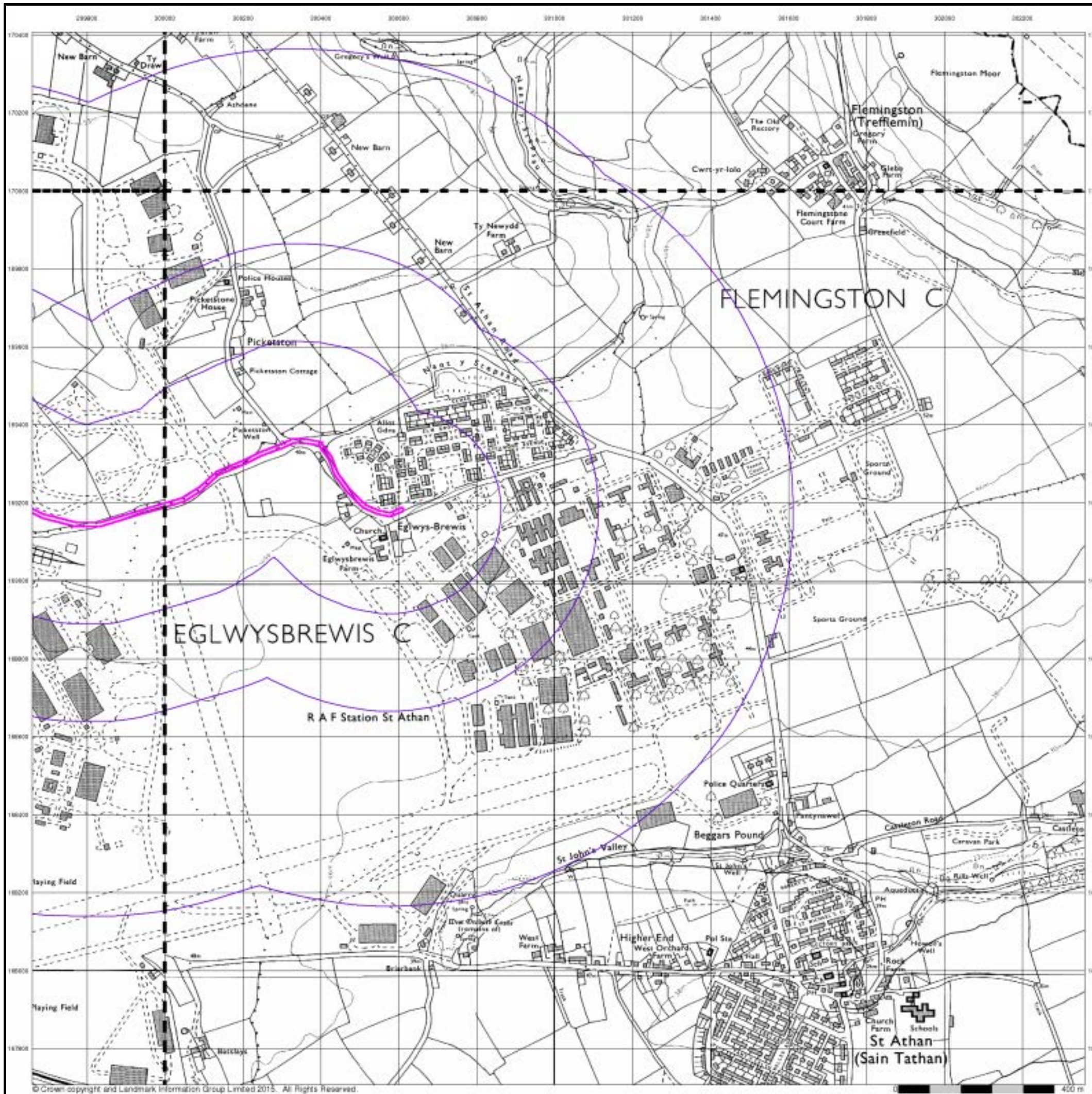


Order Details

Order Number: 91812710_1_1
 Customer Ref: 60509148
 National Grid Reference: 300530, 169230
 Slice: B
 Site Area (Ha): 3.32
 Search Buffer (m): 1000

Site Details

St Athan Route, Cowbridge, South Glamorgan, CF71 7EQ



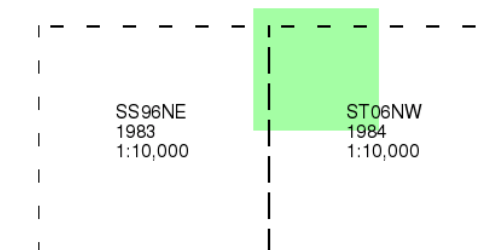
Ordnance Survey Plan

Published 1983 - 1984

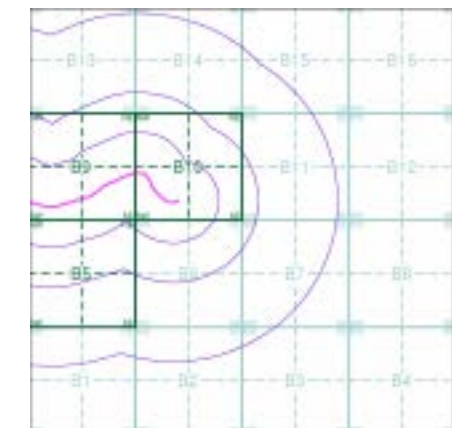
Source map scale - 1:10,000

The historical maps shown were reproduced from maps predominantly held at the scale adopted for England, Wales and Scotland in the 1840's. In 1854 the 1:2,500 scale was adopted for mapping urban areas; these maps were used to update the 1:10,560 maps. The published date given therefore is often some years later than the surveyed date. Before 1938, all OS maps were based on the Cassini Projection, with independent surveys of a single county or group of counties, giving rise to significant inaccuracies in outlying areas. In the late 1940's, a Provisional Edition was produced, which updated the 1:10,560 mapping from a number of sources. The maps appear unfinished - with all military camps and other strategic sites removed. These maps were initially overprinted with the National Grid. In 1970, the first 1:10,000 maps were produced using the Transverse Mercator Projection. The revision process continued until recently, with new editions appearing every 10 years or so for urban areas.

Map Name(s) and Date(s)



Historical Map - Slice B

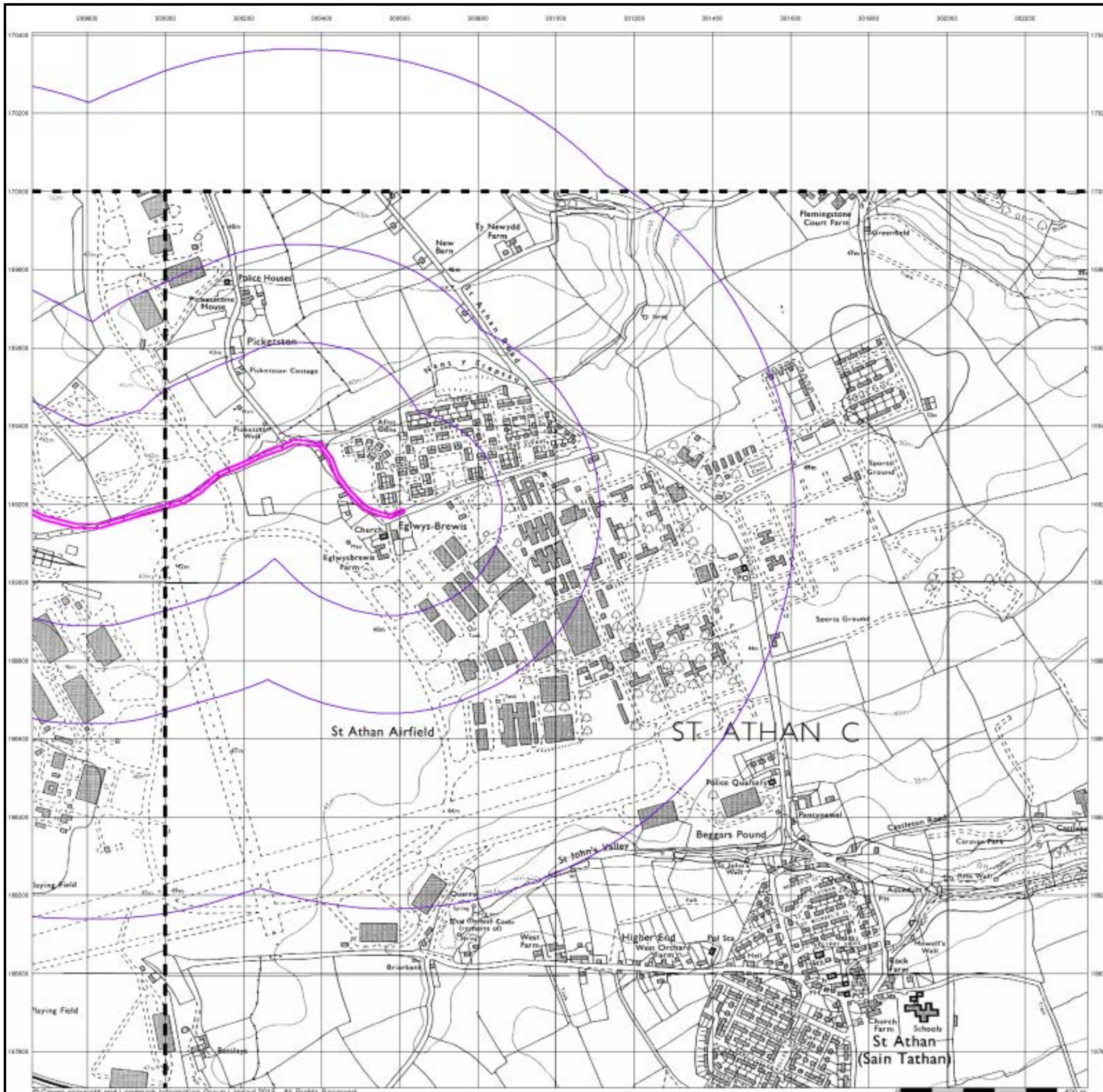


Order Details

Order Number: 91812710_1_1
 Customer Ref: 60509148
 National Grid Reference: 300530, 169230
 Slice: B
 Site Area (Ha): 3.32
 Search Buffer (m): 1000

Site Details

St Athan Route, Cowbridge, South Glamorgan, CF71 7EQ



Ordnance Survey Plan

Published 1990

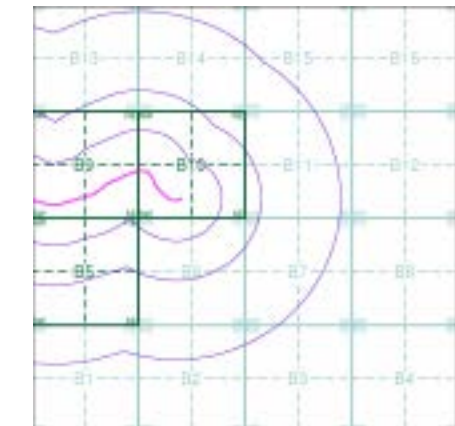
Source map scale - 1:10,000

The historical maps shown were reproduced from maps predominantly held at the scale adopted for England, Wales and Scotland in the 1840's. In 1854 the 1:2,500 scale was adopted for mapping urban areas; these maps were used to update the 1:10,560 maps. The published date given therefore is often some years later than the surveyed date. Before 1938, all OS maps were based on the Cassini Projection, with independent surveys of a single county or group of counties, giving rise to significant inaccuracies in outlying areas. In the late 1940's, a Provisional Edition was produced, which updated the 1:10,560 mapping from a number of sources. The maps appear unfinished - with all military camps and other strategic sites removed. These maps were initially overprinted with the National Grid. In 1970, the first 1:10,000 maps were produced using the Transverse Mercator Projection. The revision process continued until recently, with new editions appearing every 10 years or so for urban areas.

Map Name(s) and Date(s)

ST07SW	1990	1:10,000
ST06NW	1990	1:10,000

Historical Map - Slice B

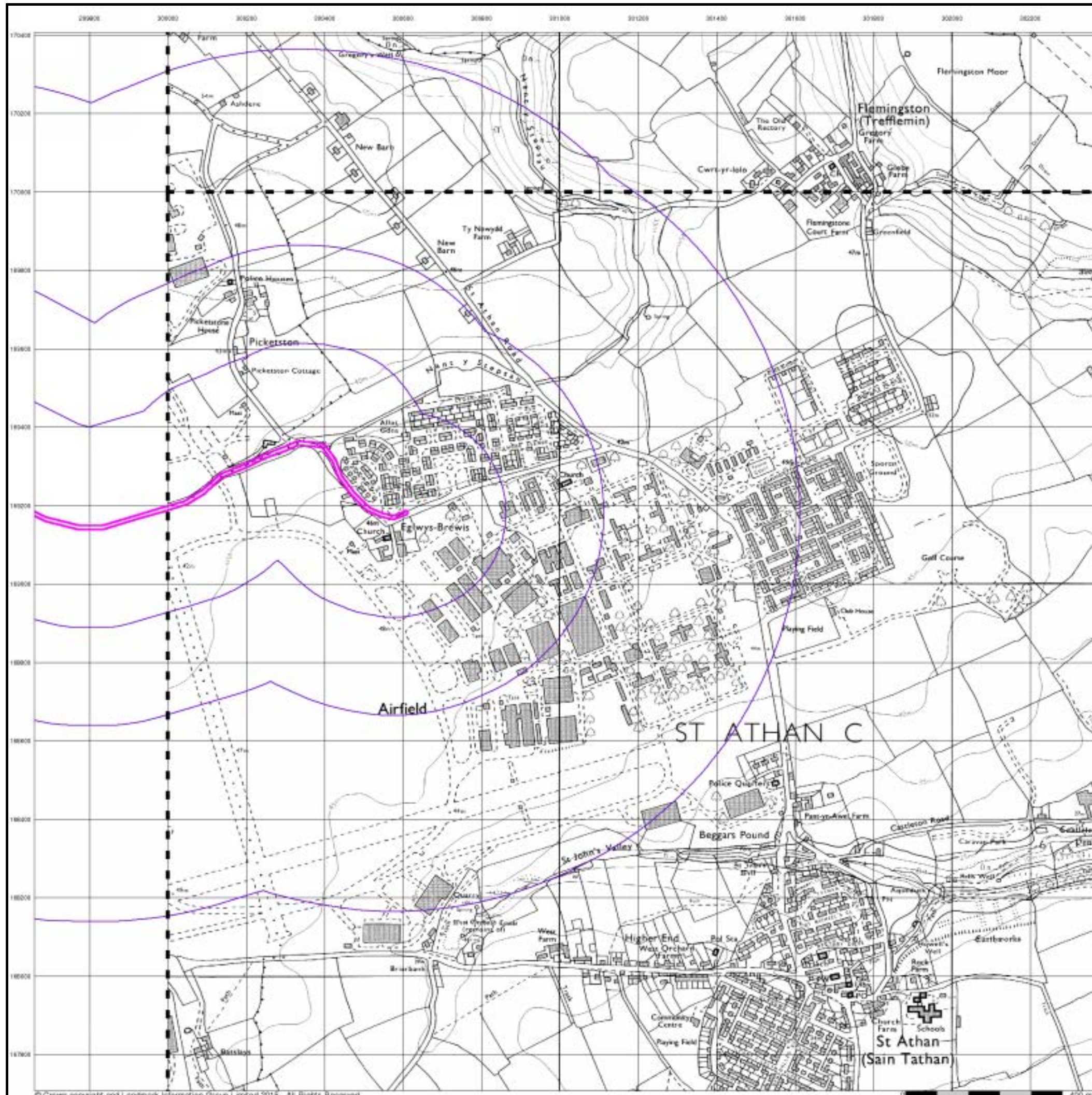


Order Details

Order Number: 91812710_1_1
 Customer Ref: 60509148
 National Grid Reference: 300530, 169230
 Slice: B
 Site Area (Ha): 3.32
 Search Buffer (m): 1000

Site Details

St Athan Route, Cowbridge, South Glamorgan, CF71 7EQ



10k Raster Mapping

Published 1999

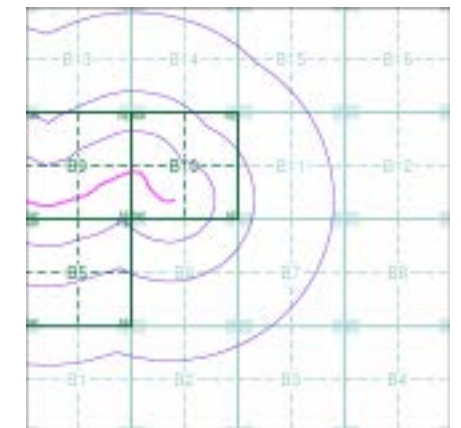
Source map scale - 1:10,000

The historical maps shown were produced from the Ordnance Survey's 1:10,000 colour raster mapping. These maps are derived from Landplan which replaced the old 1:10,000 maps originally published in 1970. The data is highly detailed showing buildings, fences and field boundaries as well as all roads, tracks and paths. Road names are also included together with the relevant road number and classification. Boundary information depiction includes county, unitary authority, district, civil parish and constituency.

Map Name(s) and Date(s)

SS97SE	ST07SW
1999	1999
1:10,000	1:10,000
SS96NE	ST06NW
1999	1999
1:10,000	1:10,000

Historical Map - Slice B

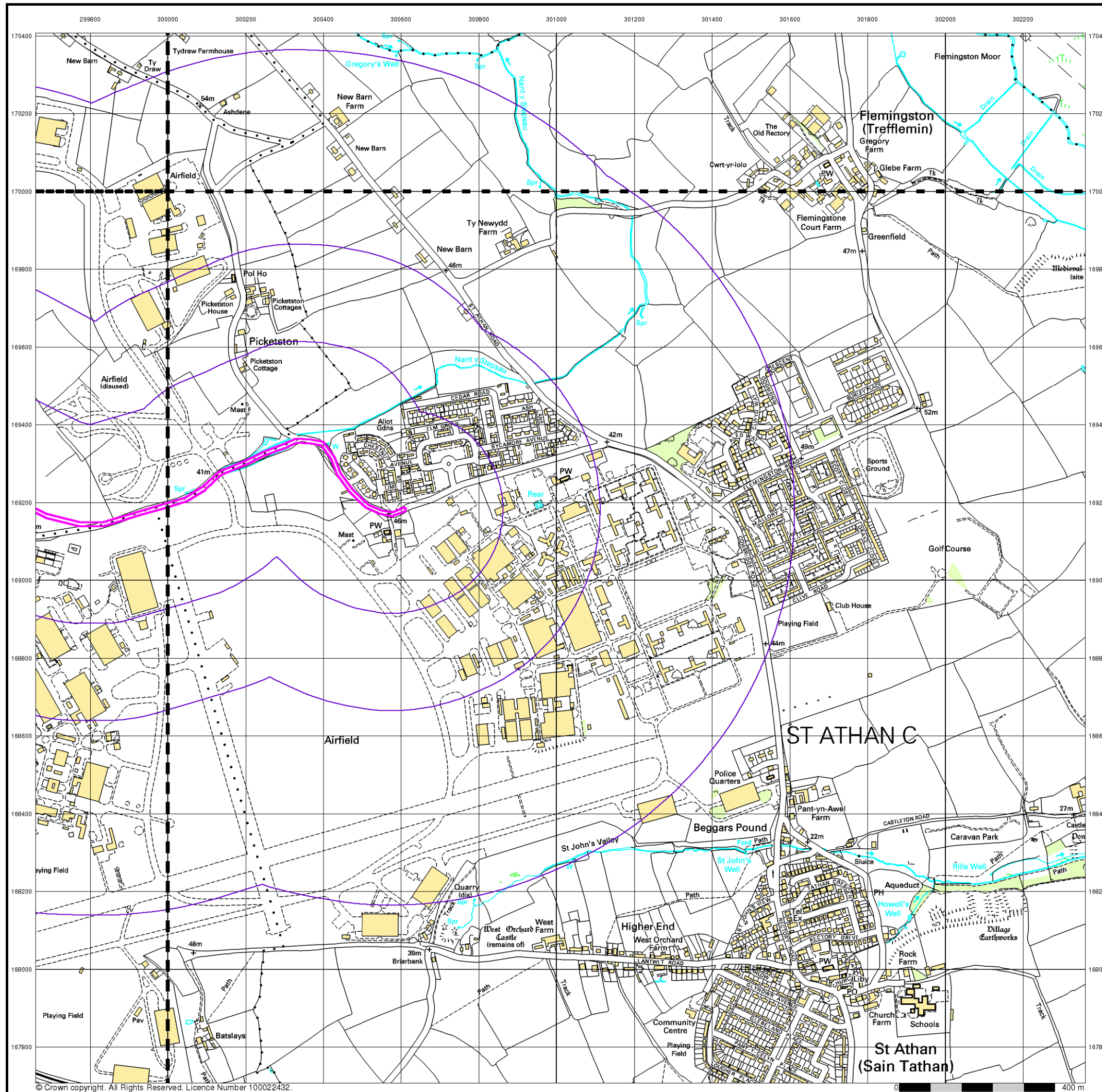


Order Details

Order Number: 91812710_1_1
 Customer Ref: 60509148
 National Grid Reference: 300530, 169230
 Slice: B
 Site Area (Ha): 3.32
 Search Buffer (m): 1000

Site Details

St Athan Route, Cowbridge, South Glamorgan, CF71 7EQ

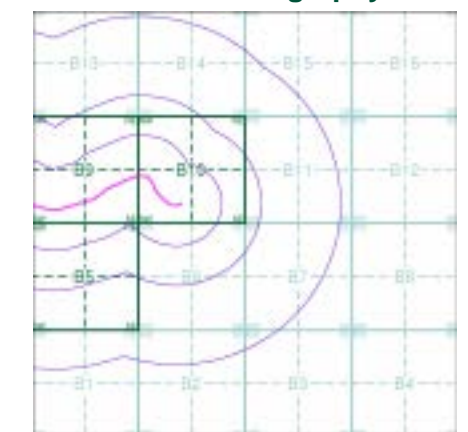


Historical Aerial Photography

Published 2000

This aerial photography was produced by Getmapping, these vertical aerial photographs provide a seamless, full colour survey of the whole of Great Britain

Historical Aerial Photography - Slice B



Order Details

Order Number: 91812710_1_1
 Customer Ref: 60509148
 National Grid Reference: 300530, 169230
 Slice: B
 Site Area (Ha): 3.32
 Search Buffer (m): 1000

Site Details

St Athan Route, Cowbridge, South Glamorgan, CF71 7EQ

10k Raster Mapping

Published 2006

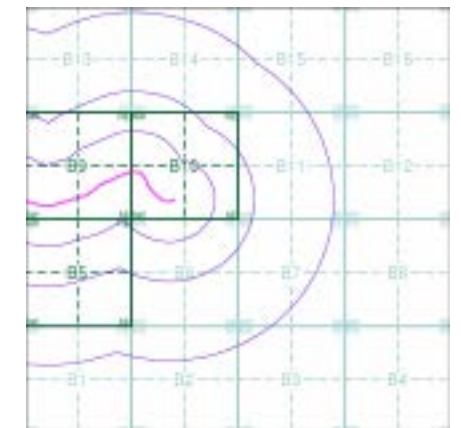
Source map scale - 1:10,000

The historical maps shown were produced from the Ordnance Survey's 1:10,000 colour raster mapping. These maps are derived from Landplan which replaced the old 1:10,000 maps originally published in 1970. The data is highly detailed showing buildings, fences and field boundaries as well as all roads, tracks and paths. Road names are also included together with the relevant road number and classification. Boundary information depiction includes county, unitary authority, district, civil parish and constituency.

Map Name(s) and Date(s)

SS97SE 2006 1:10,000	ST07SW 2006 1:10,000
SS96NE 2006 1:10,000	ST06NW 2006 1:10,000

Historical Map - Slice B

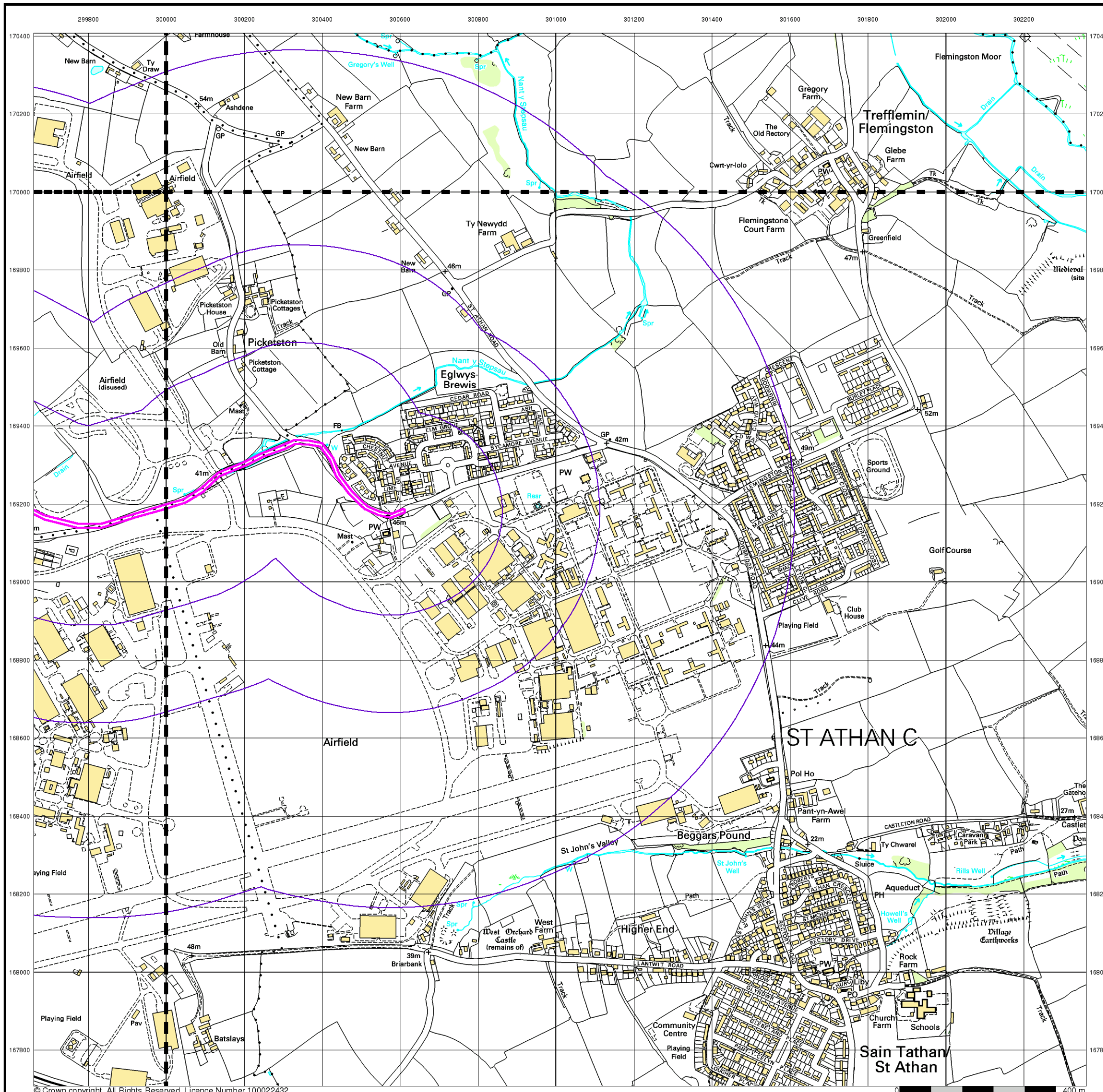


Order Details

Order Number: 91812710_1_1
 Customer Ref: 60509148
 National Grid Reference: 300530, 169230
 Slice: B
 Site Area (Ha): 3.32
 Search Buffer (m): 1000

Site Details

St Athan Route, Cowbridge, South Glamorgan, CF71 7EQ



© Crown copyright. All Rights Reserved. Licence Number 100022432.

VectorMap Local

Published 2016

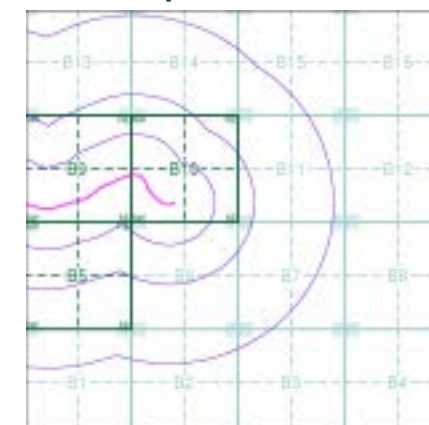
Source map scale - 1:10,000

VectorMap Local (Raster) is Ordnance Survey's highest detailed 'backdrop' mapping product. These maps are produced from OS's VectorMap Local, a simple vector dataset at a nominal scale of 1:10,000, covering the whole of Great Britain, that has been designed for creating graphical mapping. OS VectorMap Local is derived from large-scale information surveyed at 1:1250 scale (covering major towns and cities), 1:2500 scale (smaller towns, villages and developed rural areas), and 1:10 000 scale (mountain, moorland and river estuary areas).

Map Name(s) and Date(s)

SS97SE 2016 Variable	ST07SW 2016 Variable
SS96NE 2016 Variable	ST06NW 2016 Variable

Historical Map - Slice B



Order Details

Order Number: 91812710_1_1
 Customer Ref: 60509148
 National Grid Reference: 300530, 169230
 Slice: B
 Site Area (Ha): 3.32
 Search Buffer (m): 1000

Site Details

St Athan Route, Cowbridge, South Glamorgan, CF71 7EQ

