

Project Title:

**ST. ATHAN
 NORTHERN ACCESS
 ROAD**

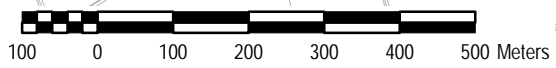
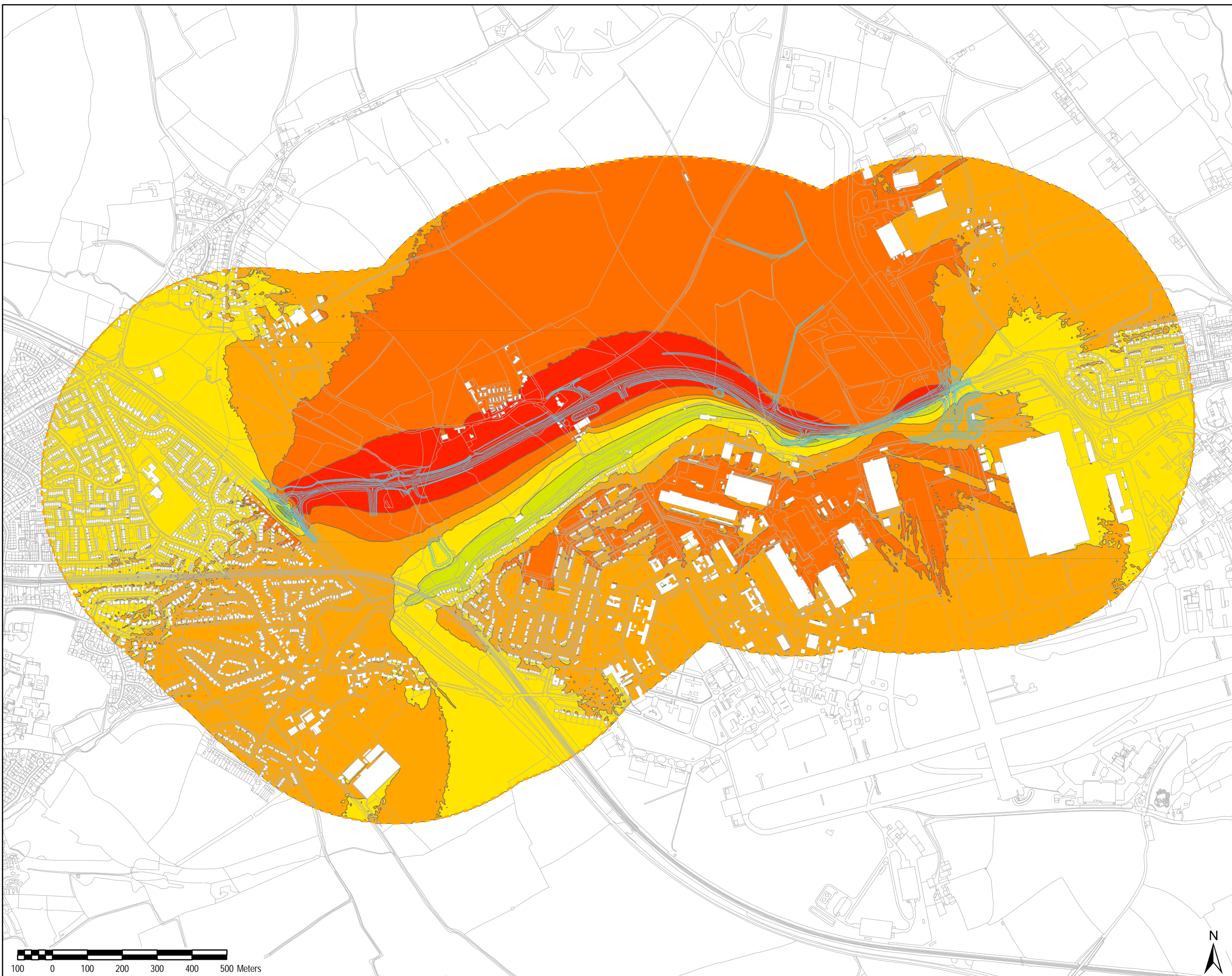
Client:



Llywodraeth Cymru
 Welsh Government

LEGEND

- Scheme
- 600m quantitative study area
- LA10,18h dB (free-field) at 4m**
- <= -10.0
- 5.0 to -9.9
- 3.0 to -4.9
- <0 to -2.9
- 0 to +2.9
- +3.0 to +4.9
- +5.0 to +9.9
- >= +10.0



Copyright:

Contains Ordnance Survey data
 © Crown Copyright supplied by Welsh
 Assembly Government (2017).

AECOM Internal Project No:

60509148

Drawing Title:

**LONG TERM CHANGE IN
 TRAFFIC NOISE LEVELS 2019
 DO MINIMUM TO 2034 DO
 SOMETHING (NO MITIGATION)**

Scale at A3: 1:10,000

Drawing No: **Rev:**

FIGURE 13 001

Drawn: Chk'd: App'd: Date:

GM SS RM 13/03/17

This drawing has been prepared for the use of AECOM's client. It may not be used, modified, reproduced or relied upon by third parties, except as agreed by AECOM or as required by law. AECOM accepts no responsibility, and denies any liability whatsoever, to any party that uses or relies on this drawing without AECOM's express written consent. Do not scale this document. All measurements must be obtained from the stated dimensions.