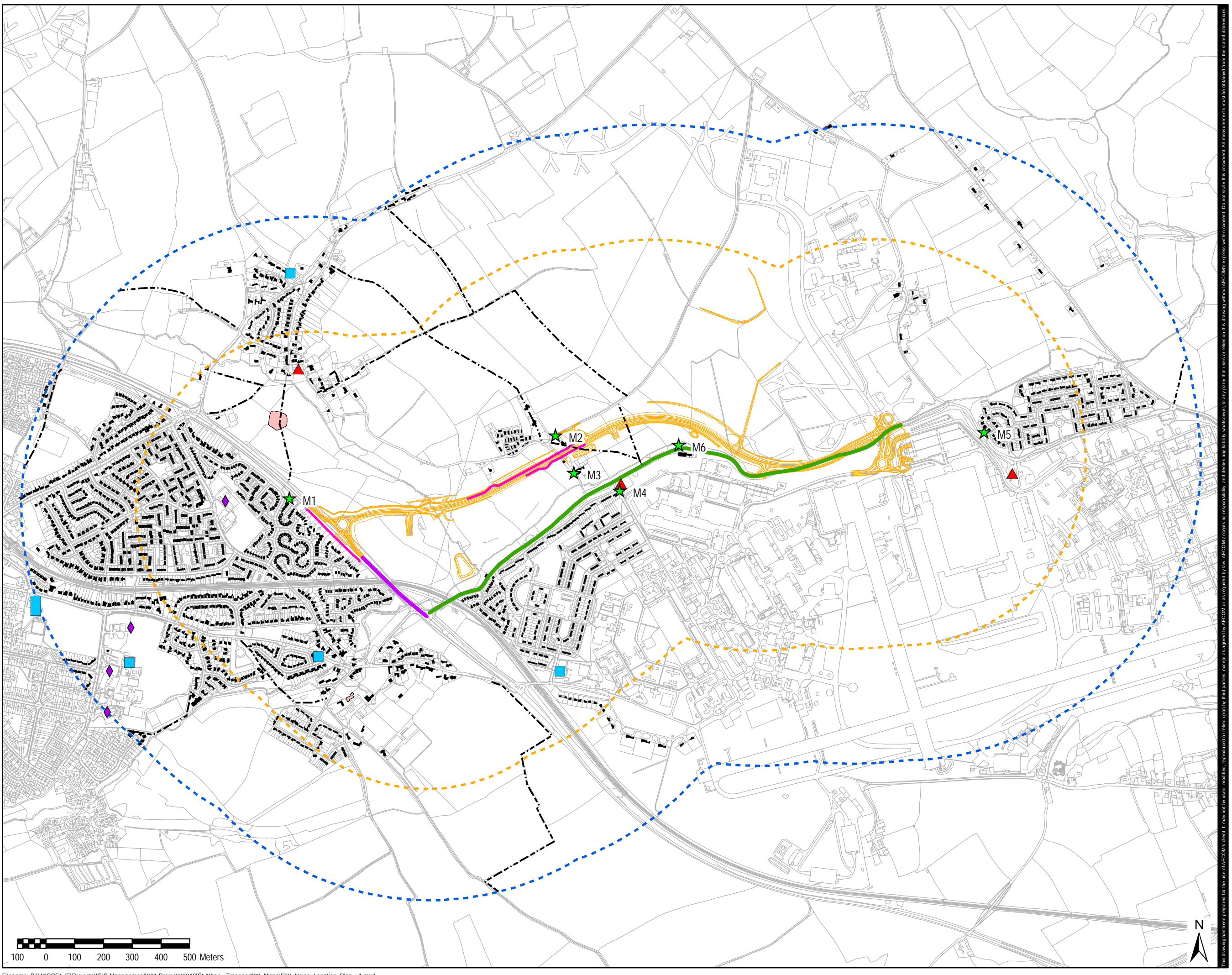


LEGEND

-  1km wider study area
-  600m quantitative study area
-  Noise monitoring location
-  Scheme
-  Noise Barrier
-  Affected route
-  Existing route replaced by scheme
-  Land Use: Community Use
-  Land Use: Educational
-  Land Use: Place of Worship
-  Land Use: Public Rights of Way
-  Land Use: Scheduled Monument
-  Land Use: Residential Building



Copyright:
 Contains Ordnance Survey data
 © Crown Copyright supplied by Welsh
 Assembly Government (2017).

AECOM Internal Project No:
 60509148
Drawing Title:

NOISE LOCATION PLAN

Scale at A3: 1:12,000
Drawing No: FIGURE 3 **Rev:** 001
Drawn: Chk'd: App'd: Date:
 GM SS RM 10/03/17

This drawing has been prepared for the use of AECOM's client. It may not be used, modified, reproduced or related upon by third parties, except as agreed by AECOM or as required by law. AECOM accepts no responsibility, and denies any liability whatsoever, to any party that uses or relies on this drawing without AECOM's express written consent. All measurements must be obtained from the stated dimensions.