



SAFETY, HEALTH AND ENVIRONMENTAL INFORMATION

In addition to the hazards/risks normally associated with the types of work detailed on this drawing, note the following specific residual risks (Reference shall also be made to the design hazard log).

Consideration

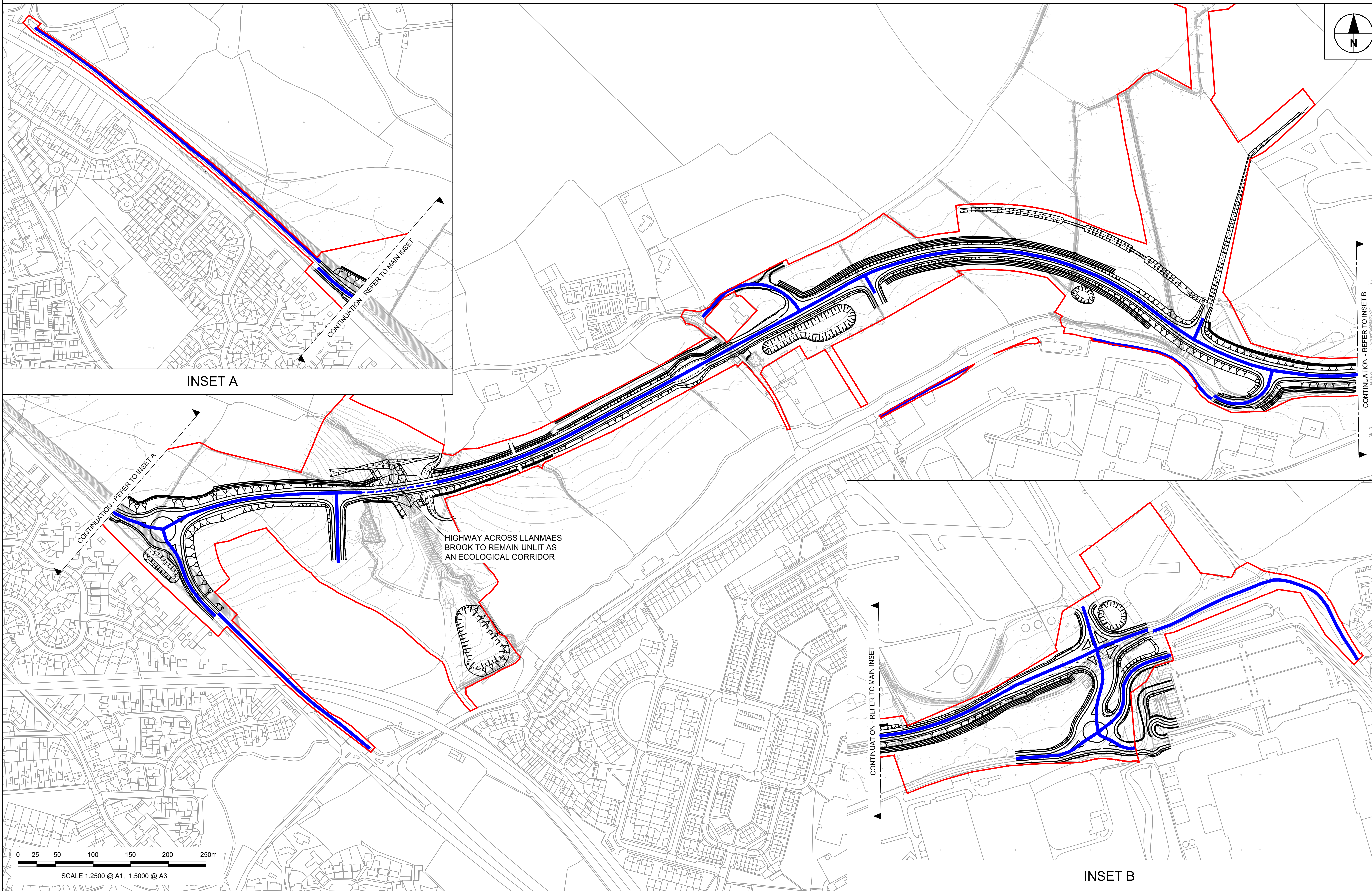
For Hazards Refer to Document: Safety in Design - Designers Residual Hazard Register

NOTES

1. ALL DIMENSIONS ARE IN METRES UNLESS OTHERWISE SPECIFIED.
2. FOR DETAILS OF THE DESIGN REFER TO THE GENERAL ARRANGEMENT DRAWINGS 60509148-SHT-30-000-CT-0121 TO 0127.

KEY

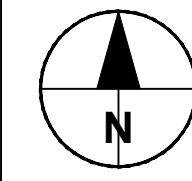
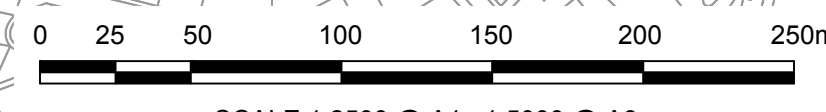
- PLANNING BOUNDARY
- PROPOSED EXTENT OF ROAD LIGHTING



INSET A

INSET B

HIGHWAY ACROSS LLANMAES BROOK TO REMAIN UNLIT AS AN ECOLOGICAL CORRIDOR



STATUS

PLANNING SUBMISSION ISSUE

ISSUE/REVISION

IR	DATE	DESCRIPTION
B	25-03-17	BOUNDARY EXTENTS UPDATED
A	27-03-17	PLANNING SUBMISSION ISSUE

KEY PLAN



PROJECT NUMBER

60509148

SHEET TITLE

ST.ATHAN
PROPOSED LIGHTING EXTENTS

SHEET NUMBER

60509148-SHT-30-0000-CT-1310

ISO A1 594mm x 841mm
Project Management Initials: Designer: TAM Checked: RM Approved: RM
Filename: P:\UK\017\PROJECTS\HIGHWAYS - ST.ATHAN\03 EXECUTION\03 DOCUMENTS\60509148-SHT-30-0000-CT-1310.DWG
Last saved by: HOLMESM
Last Printed: 2017-05-25

This drawing has been prepared for the use of AECOM's client. It may not be used, reproduced, or otherwise disseminated without the written consent of AECOM. AECOM accepts no responsibility, and denies any liability, whatsoever to any party that uses or relies on this drawing without AECOM's express written consent. Do not scale this document. All measurements must be obtained from the stated dimensions.