



SAFETY, HEALTH AND ENVIRONMENTAL INFORMATION

In addition to the hazards normally associated with the types of work detailed on this drawing, note the following specific residual risks. (Reference shall also be made to the design hazard log)

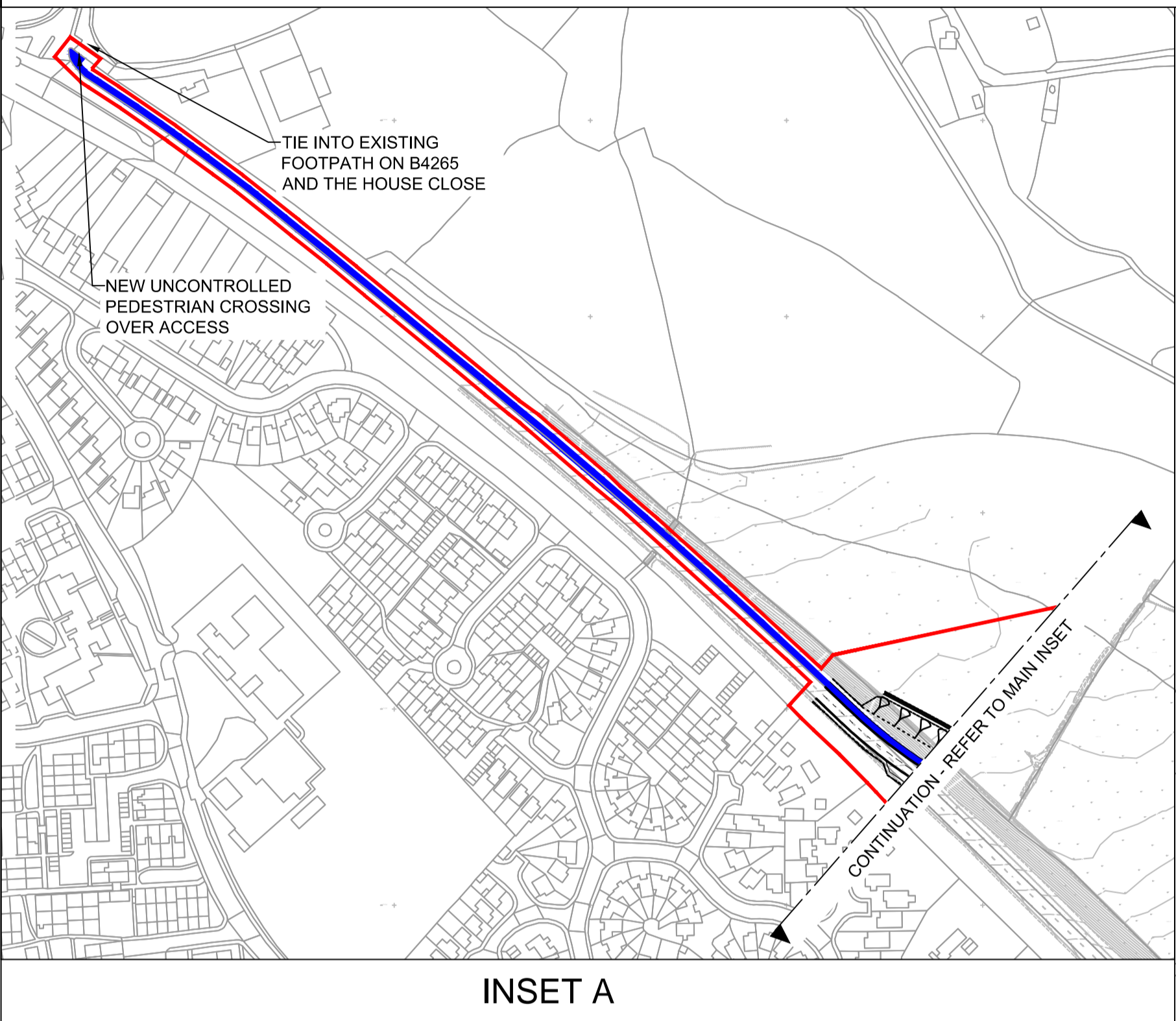
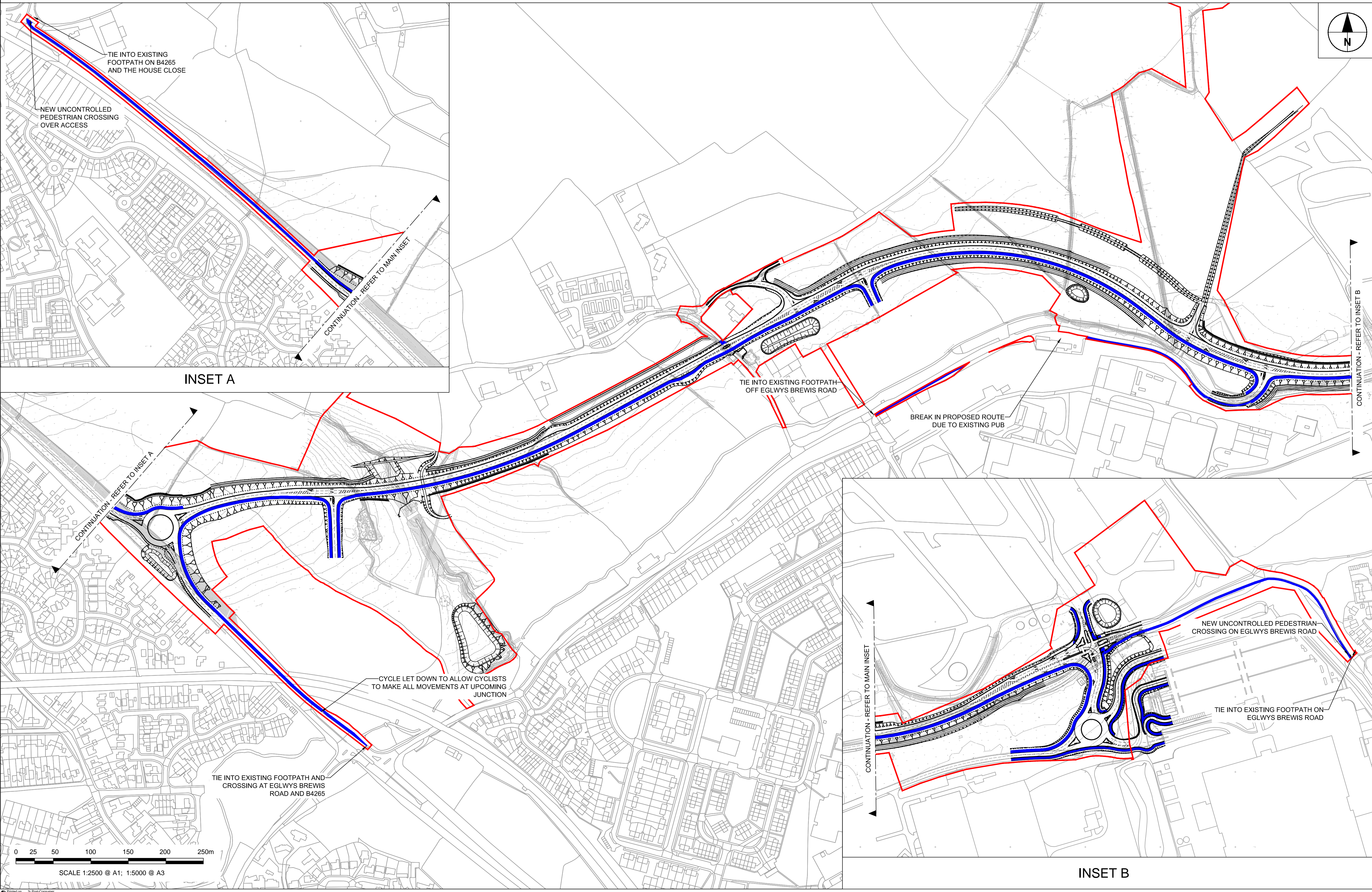
Construction
For Hazards Refer to Document: Safety in Design - Designers Residual Hazard Register

NOTES

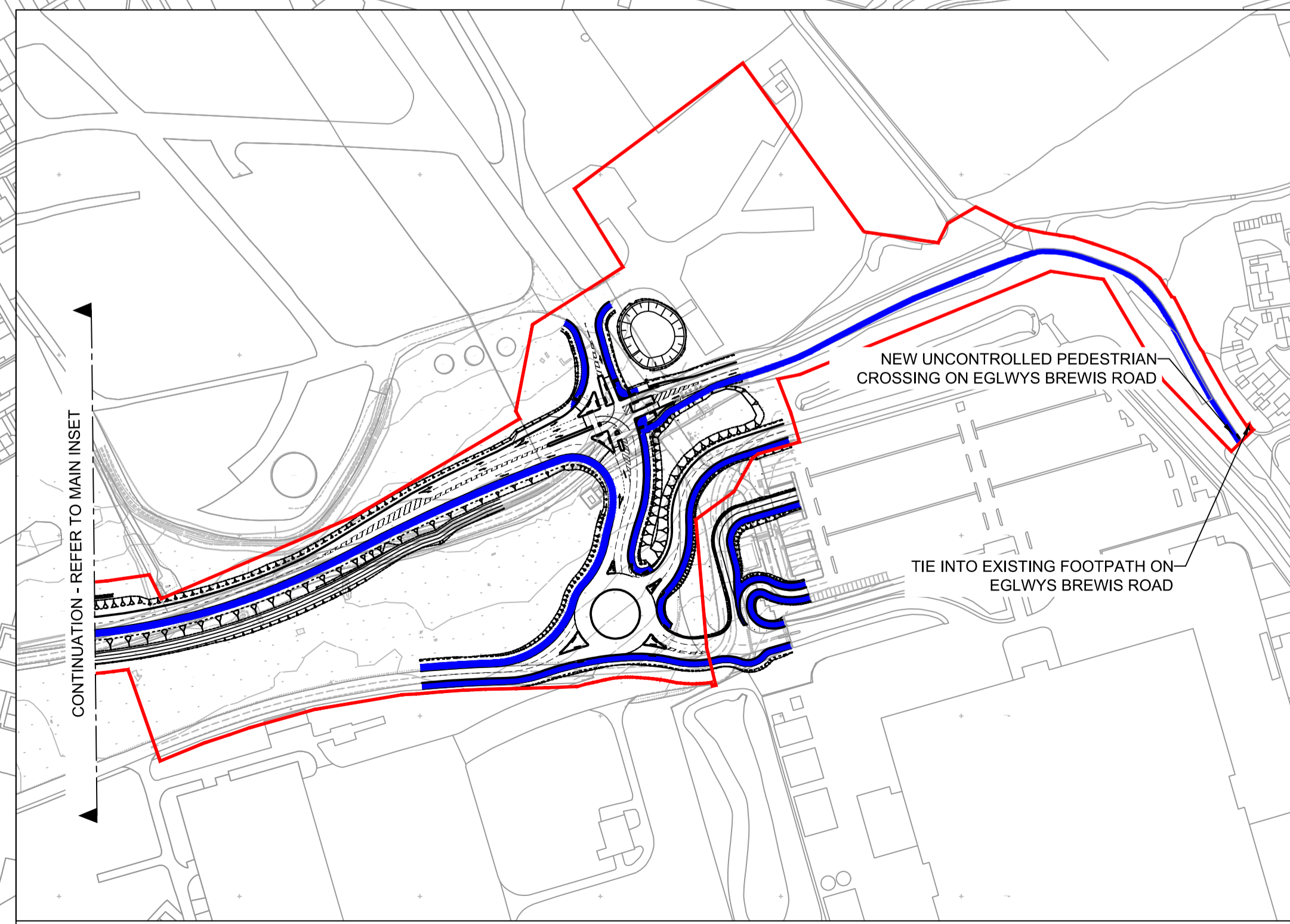
1. ALL DIMENSIONS ARE IN METRES UNLESS OTHERWISE SPECIFIED
2. THIS DRAWING SHOULD BE READ IN CONJUNCTION WITH THE GENERAL ARRANGEMENT DRAWINGS 60509148-SHT-30-000-CT-0121 TO 127
3. THIS DRAWING SHOULD BE READ IN CONJUNCTION WITH THE KERBS, FOOTWAYS & PAVED AREAS DRAWINGS 60509148-SHT-30-000-CT-1101 TO 1107
4. THE EXTENDED FOOTWAYS BEYOND THE LIMIT OF MX DESIGN HAVE BEEN SHOWN INDICATIVELY, THIS REQUIRE FURTHER DESIGN BEFORE CONSTRUCTION

KEY

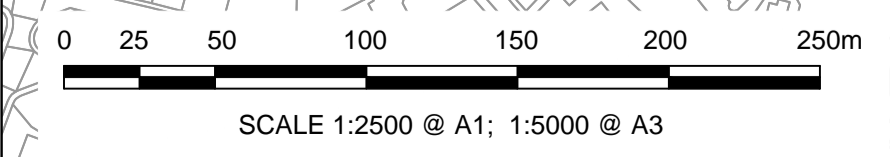
- PLANNING BOUNDARY
- PROPOSED SHARED FOOTWAY/CYCLEWAY



INSET A



INSET B



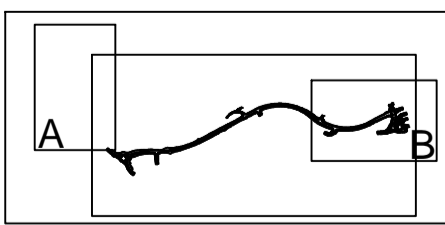
STATUS

PLANNING SUBMISSION ISSUE

ISSUE/REVISION

NO	DATE	DESCRIPTION
A	27-03-2017	PLANNING SUBMISSION ISSUE

KEY PLAN



PROJECT NUMBER

60509148

SHEET TITLE

ST.ATHAN
ROUTE WIDE FOOTWAYS

SHEET NUMBER

60509148-SHT-30-000-CT-1109

ISO A1 594mm x 841mm
Project Management Initials: Designer: TAM Checked: RM Approved: RM
Filename: F:\PROJECTS\HIGHWAYS-ST ATHAN\3 EXECUTION\3 DOCUMENTS\308 CAD\01 WORKING\DRAWINGS\1100 - KERBS, FOOTWAYS AND PAVED AREAS\60509148-SHT-30-000-CT-1109.DWG Last saved by: TAYLORD12 Last Printed: 2017-03-24
This drawing has been prepared for the use of AECOM's client. It may not be used, modified, reproduced or relied upon by third parties, except as agreed by AECOM or as required by law. AECOM accepts no responsibility, and denies any liability whatsoever, to any party that uses or relies on this drawing without AECOM's express written consent. Do not scale this document. All measurements must be obtained from the stated dimensions.
Recycled Content Paper