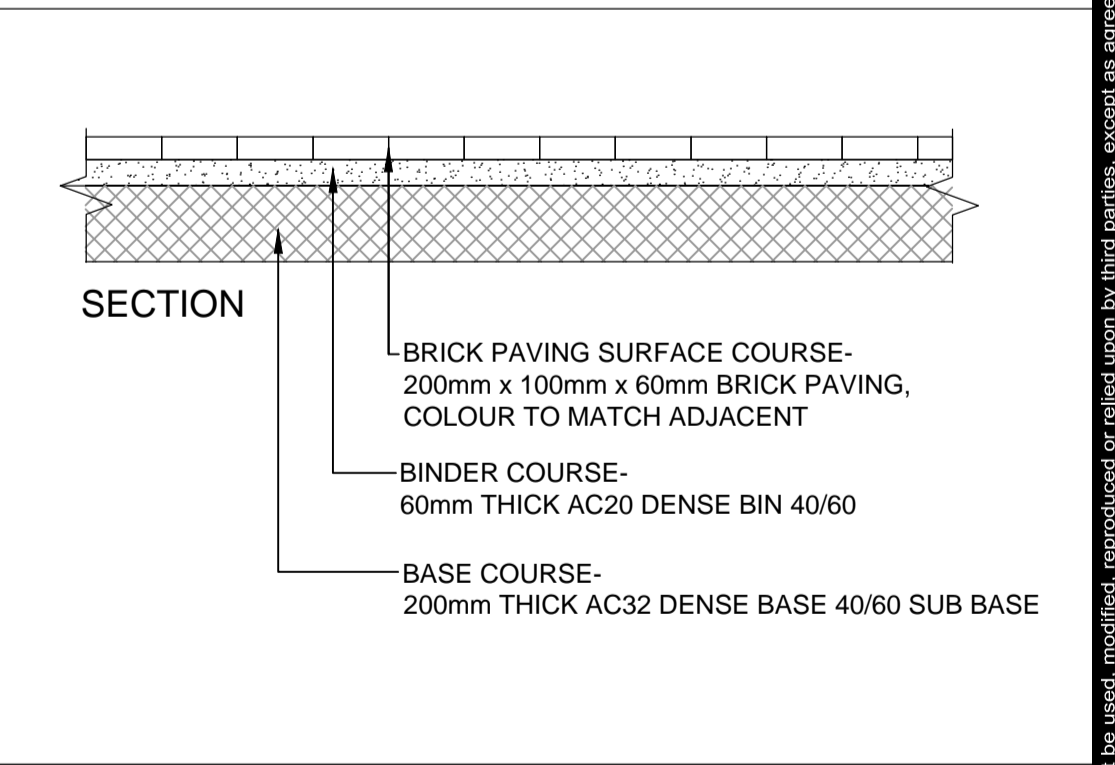
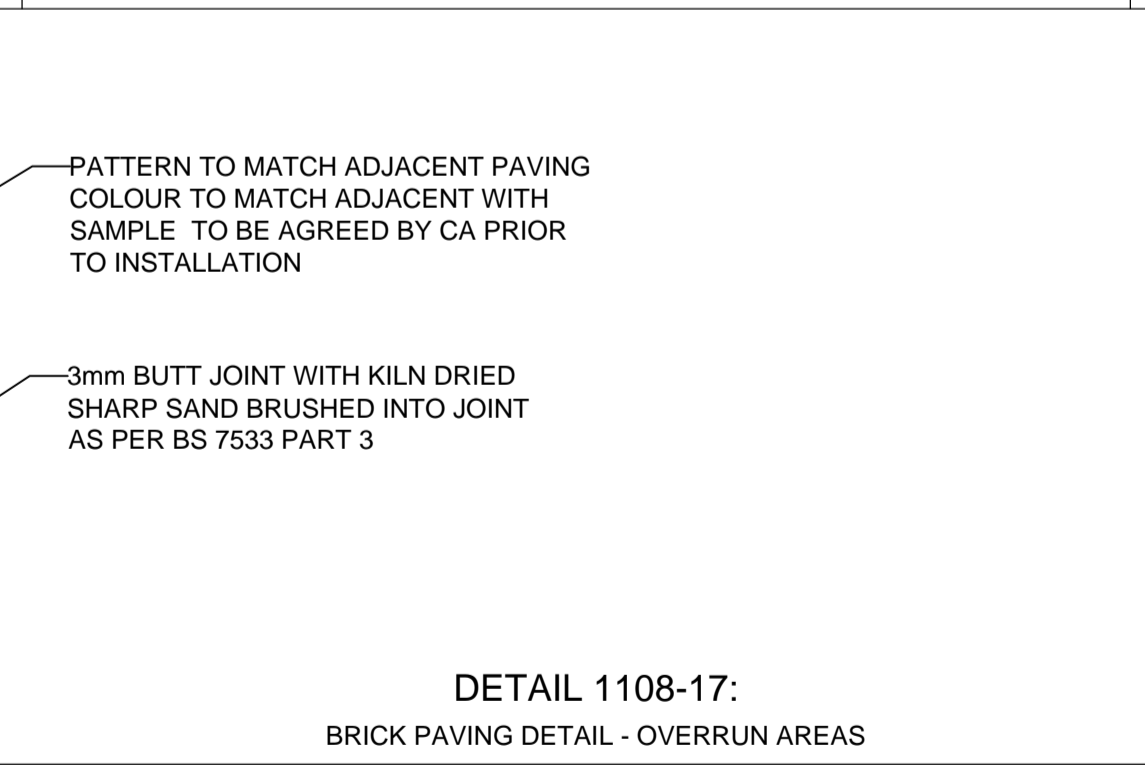
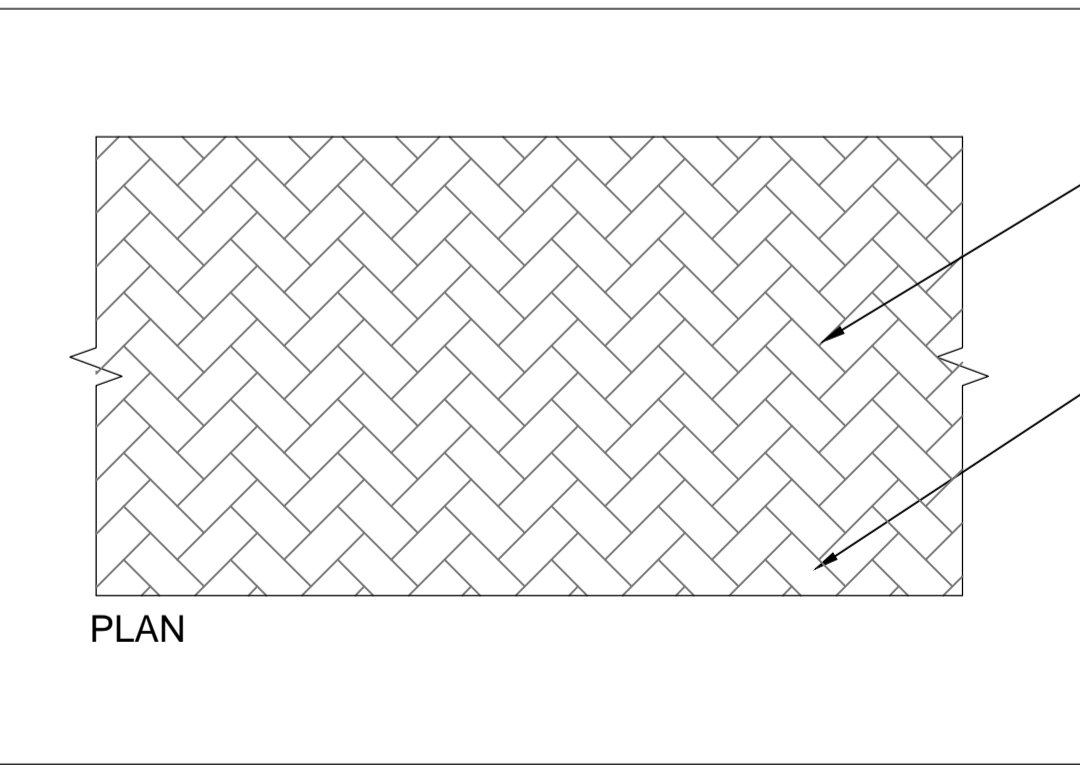
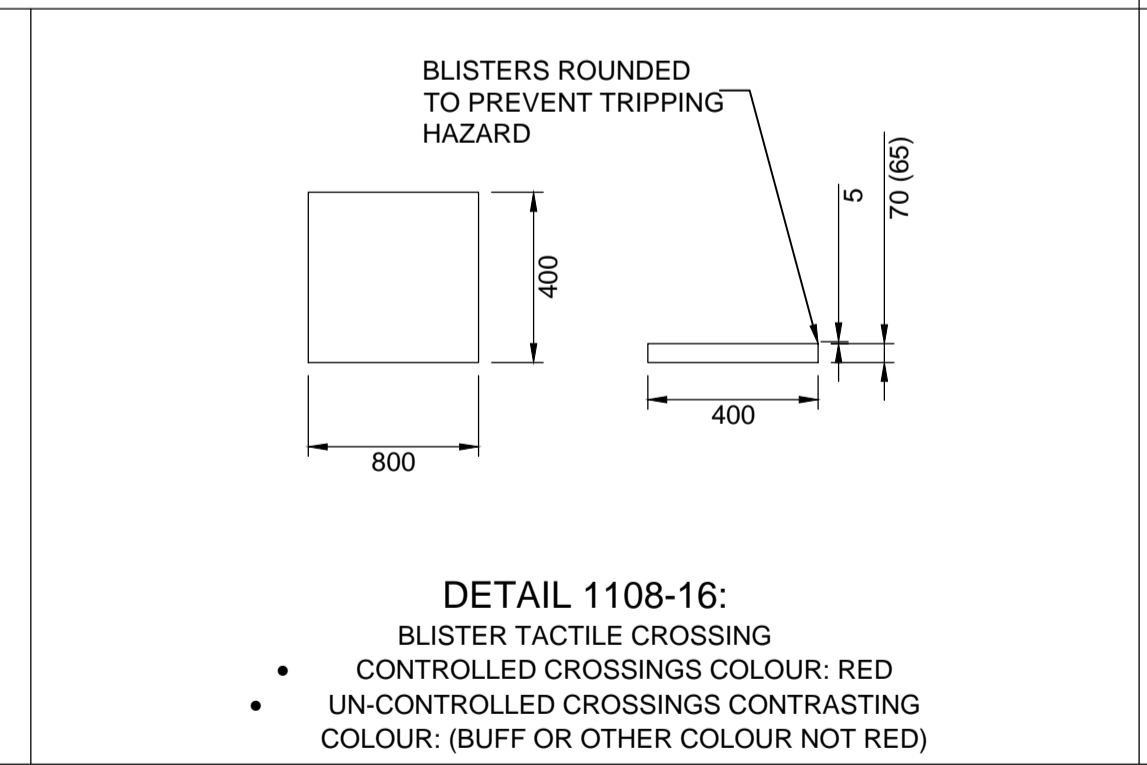
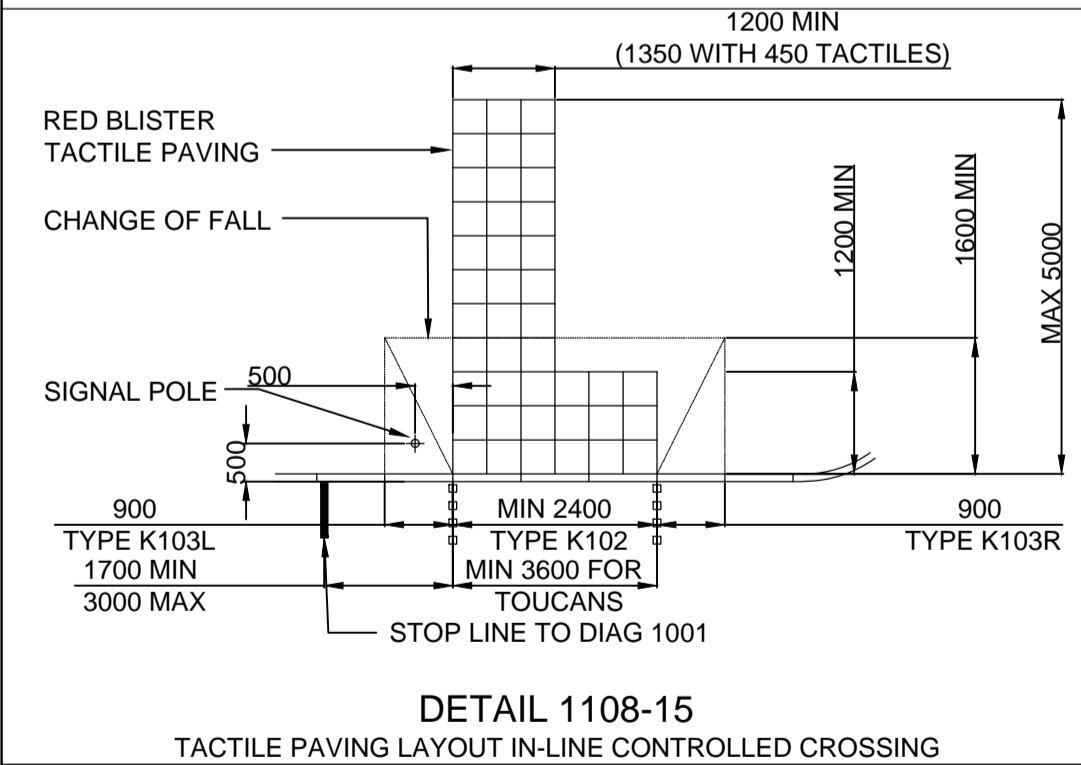
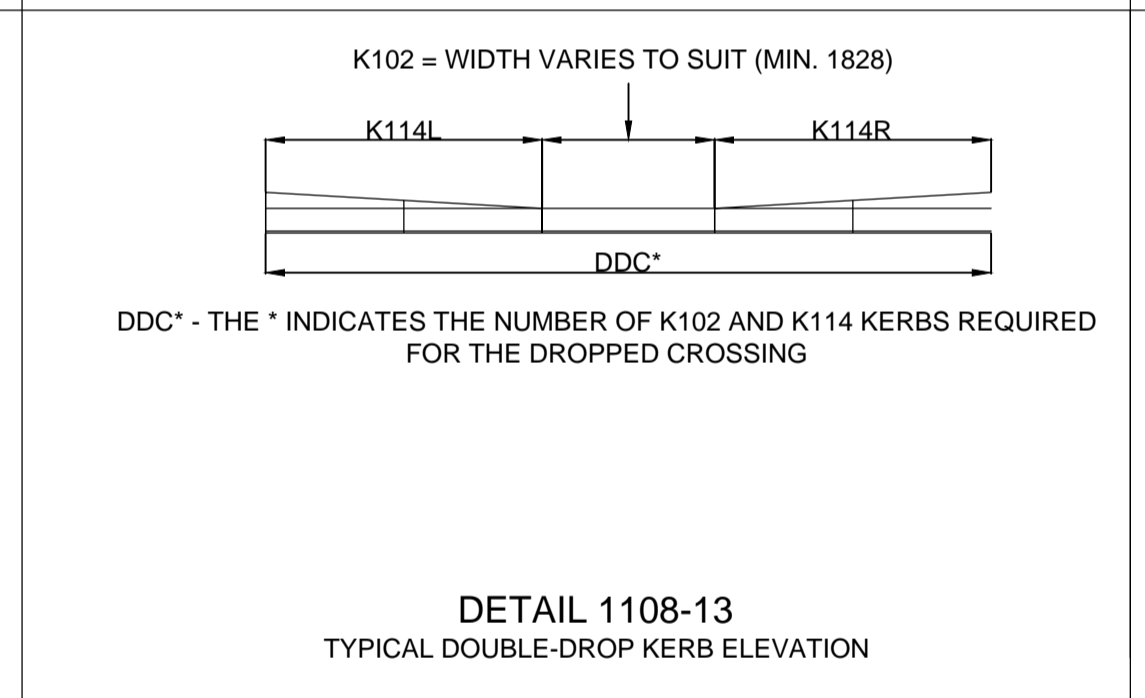
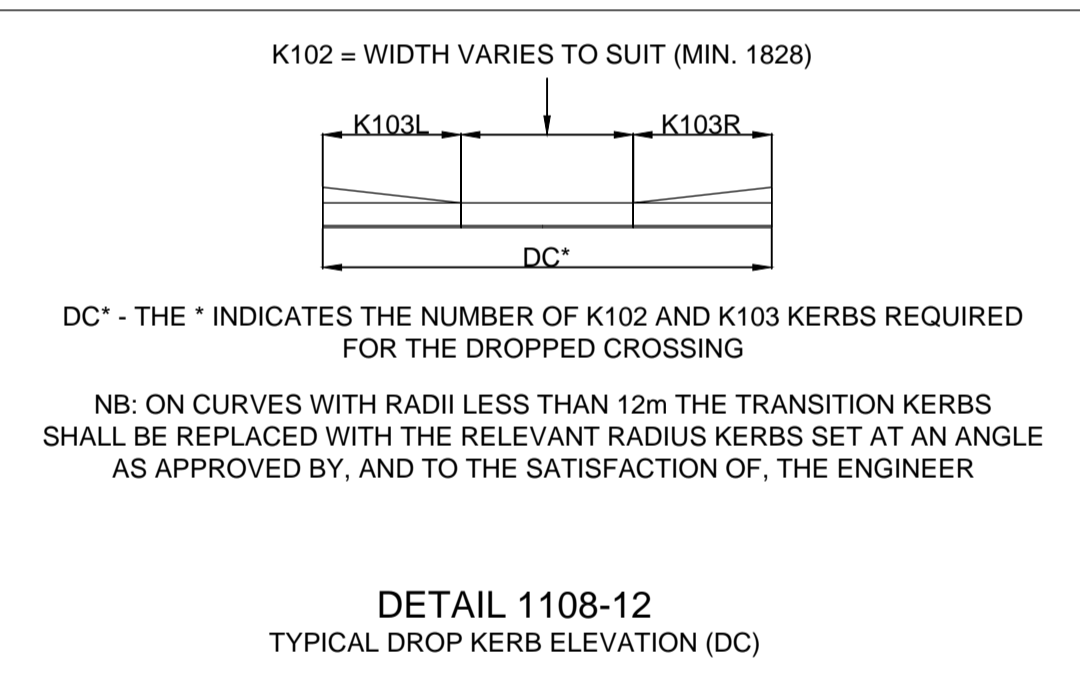
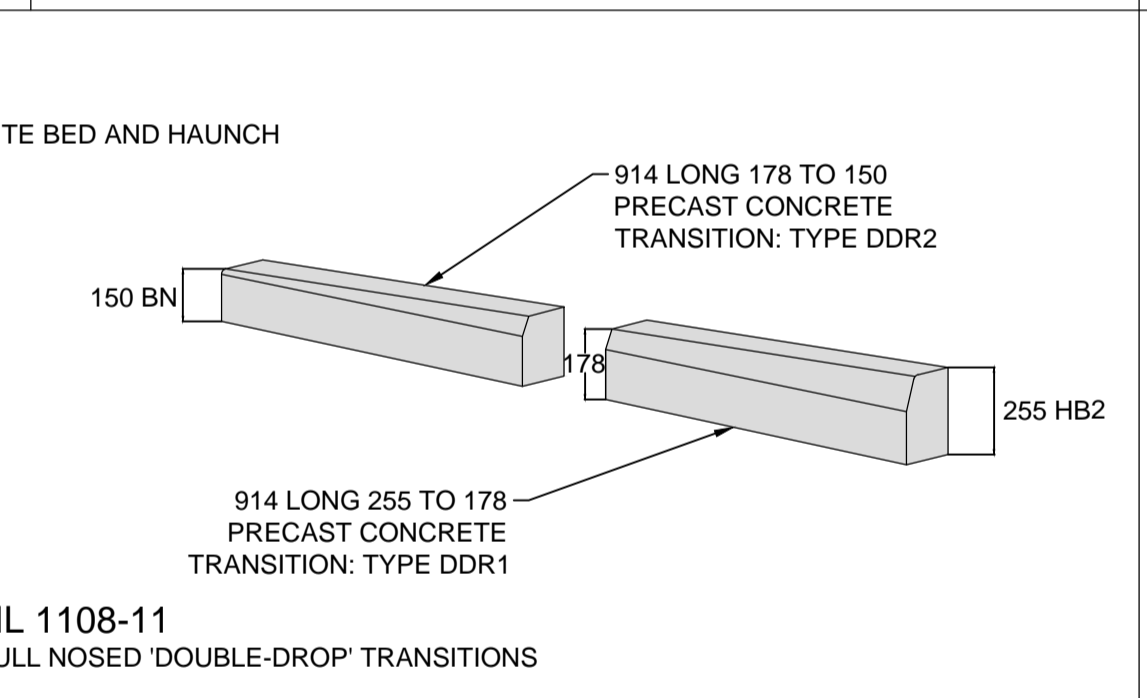
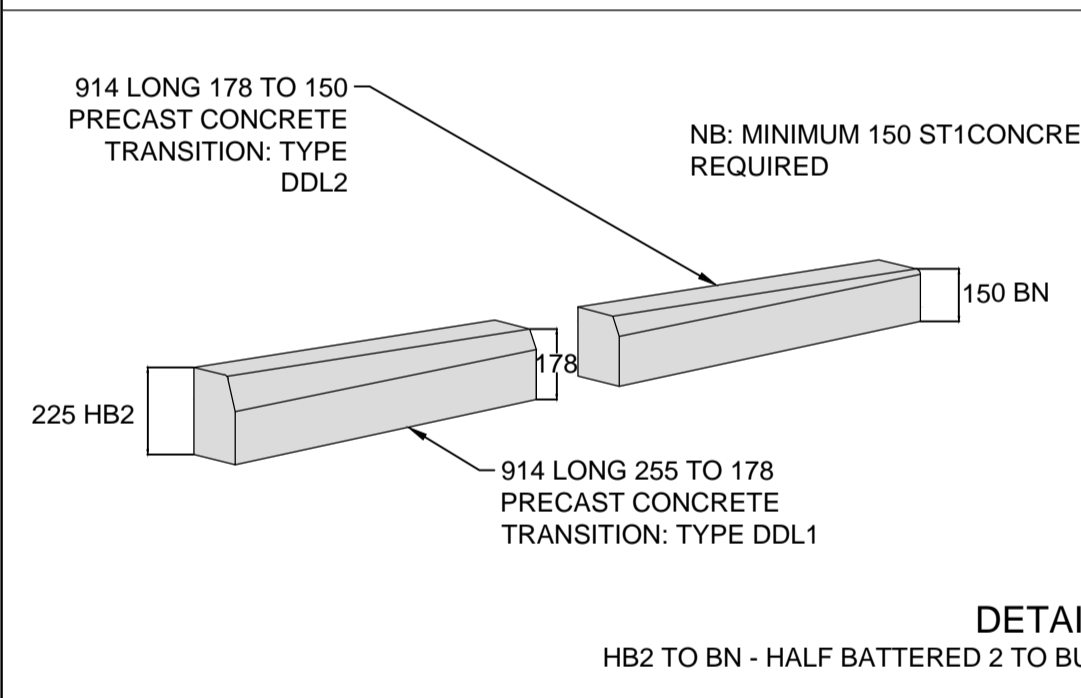
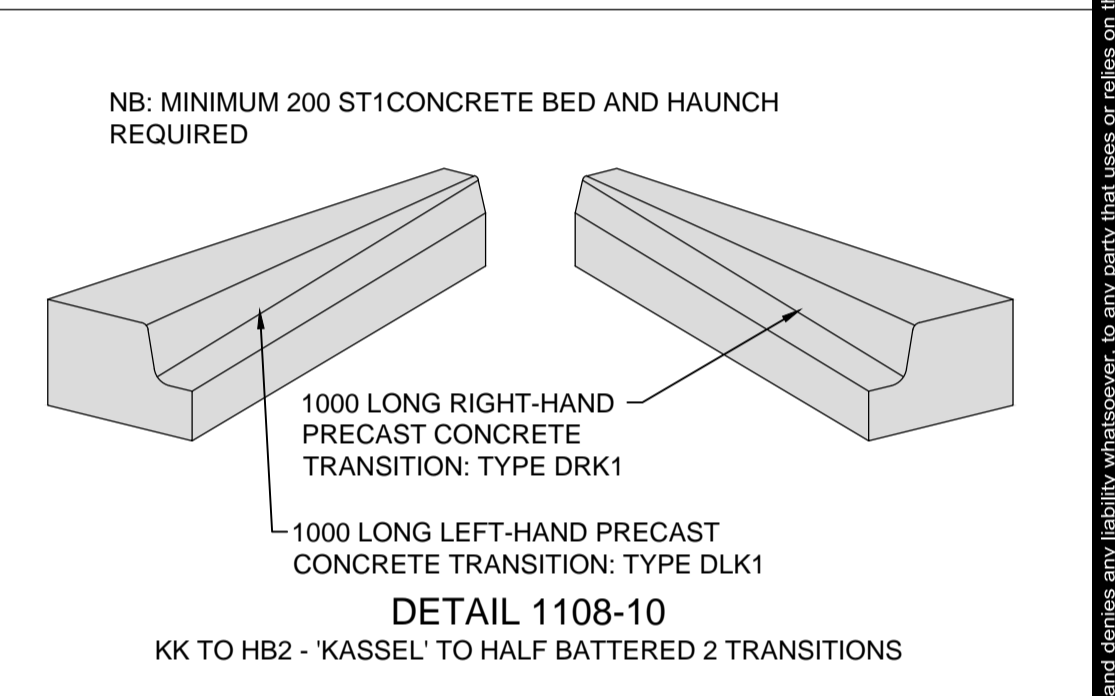
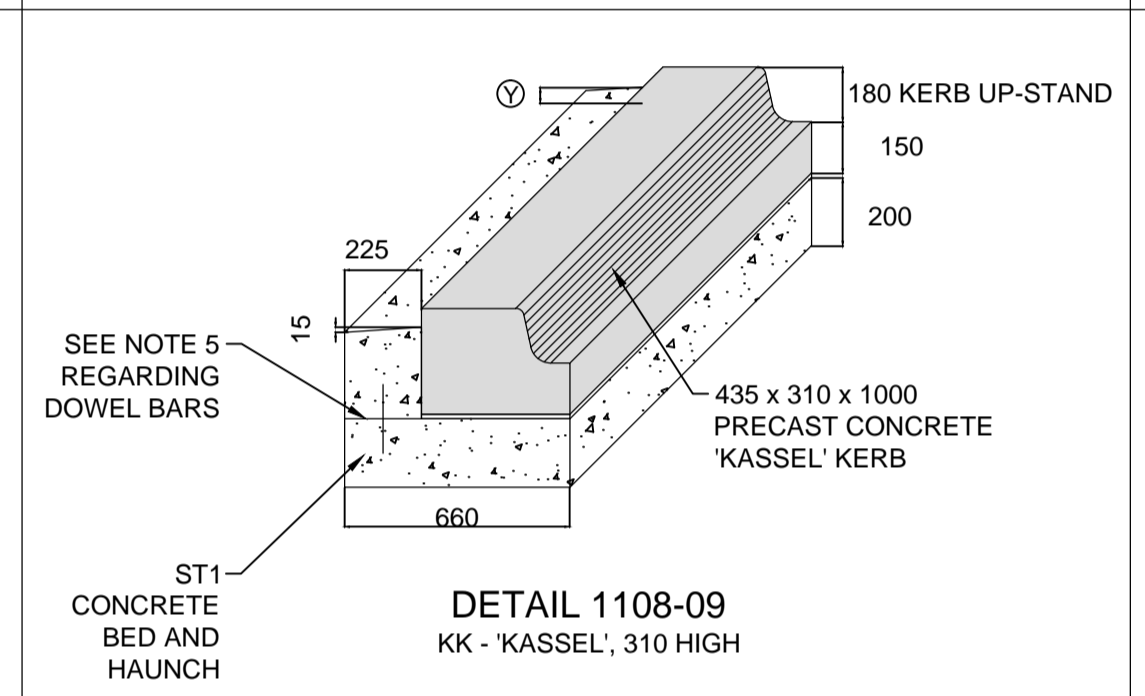
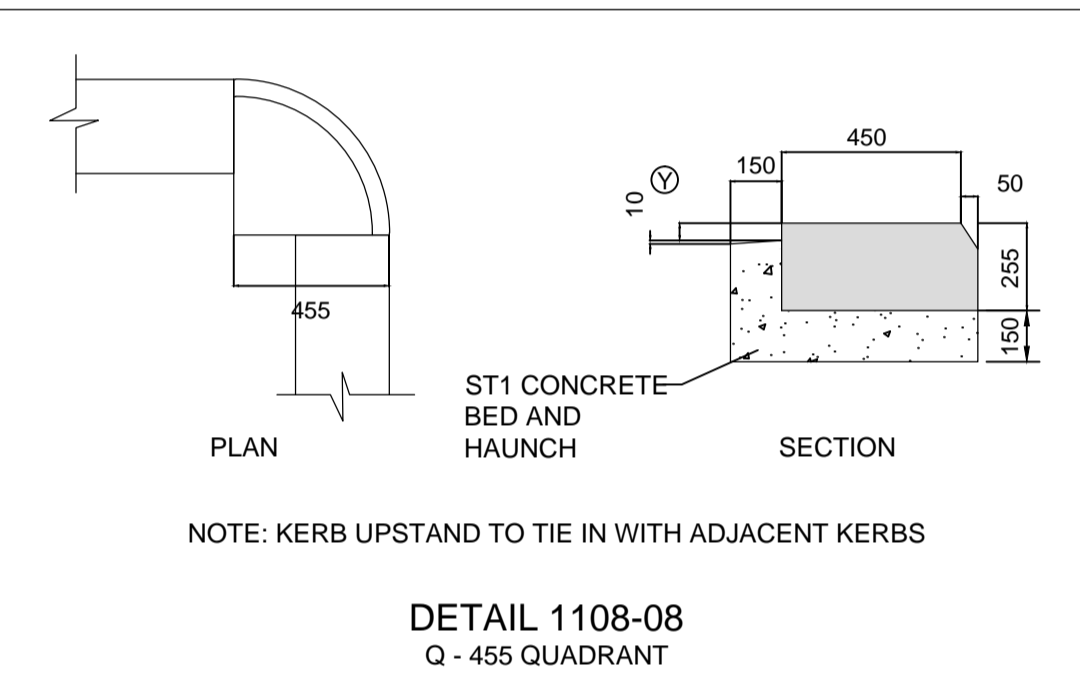
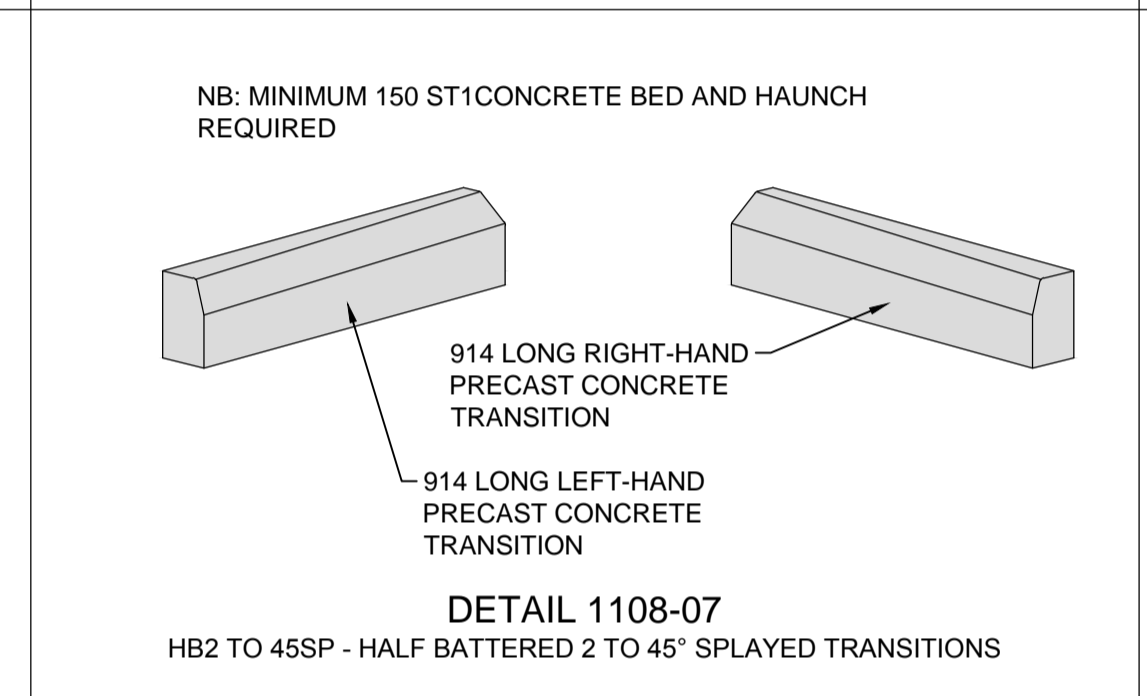
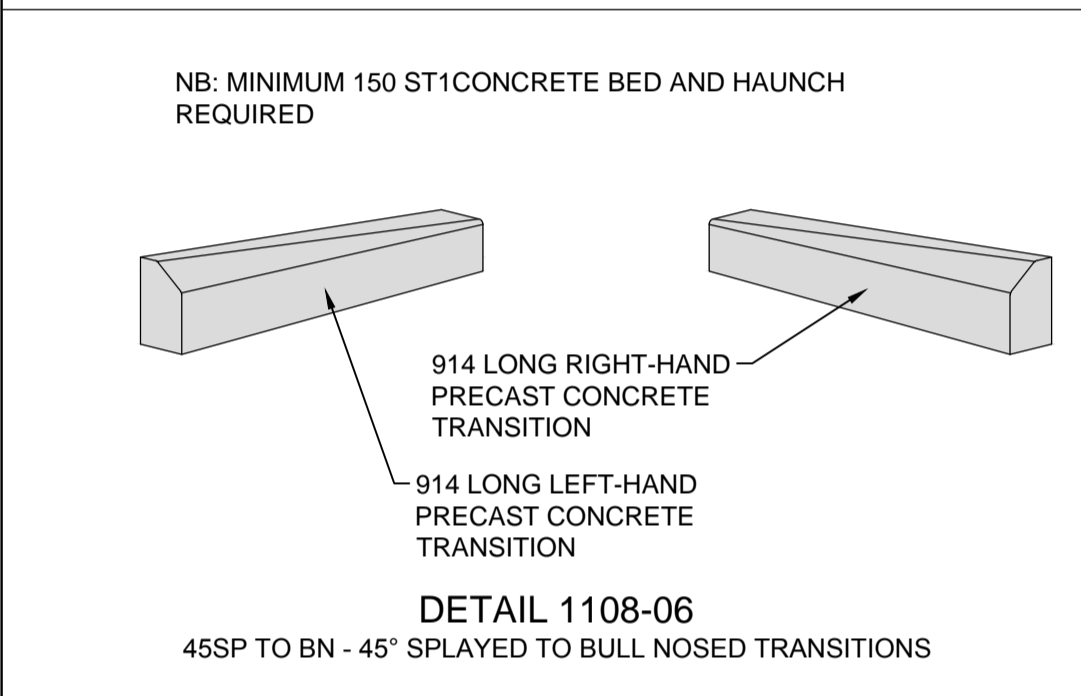
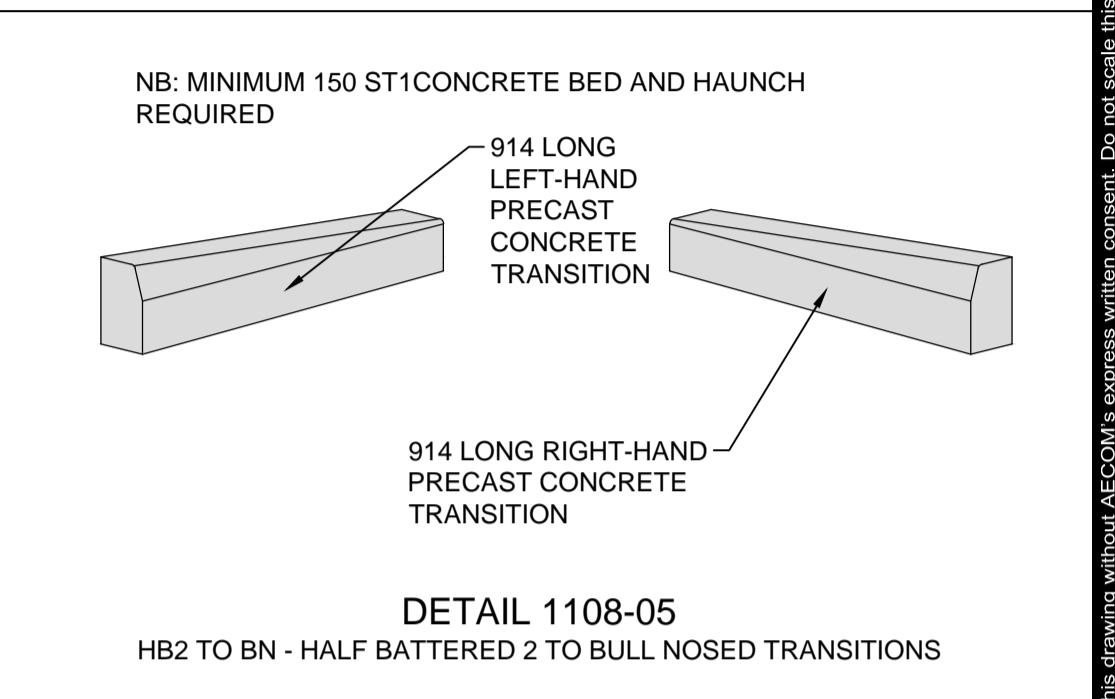
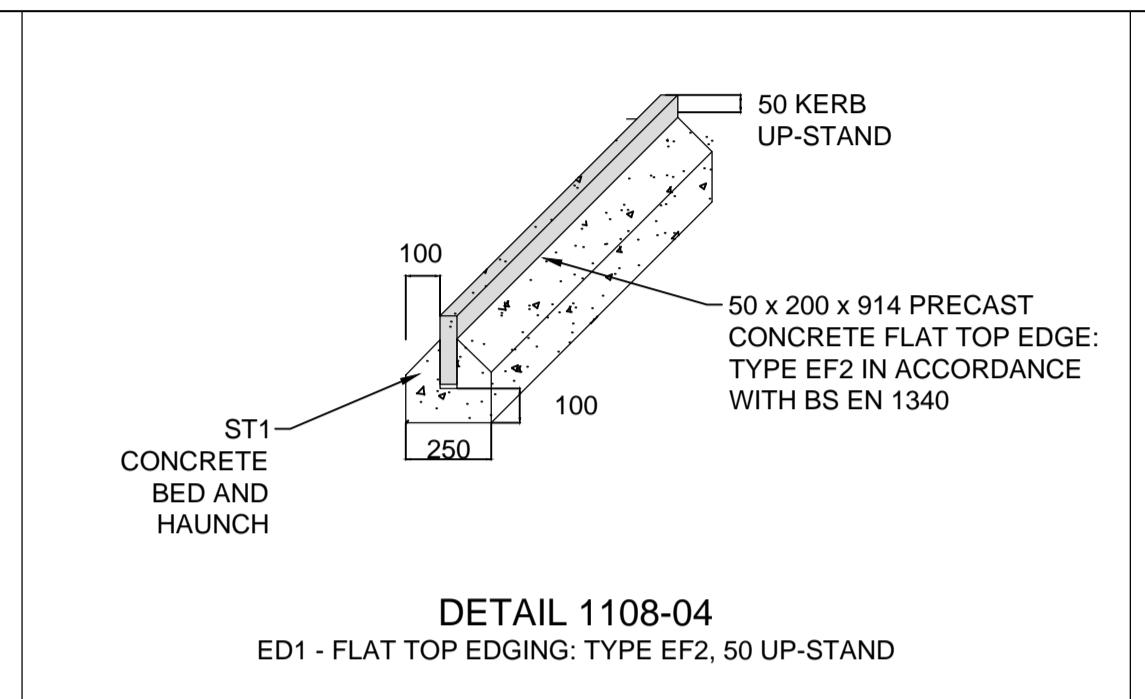
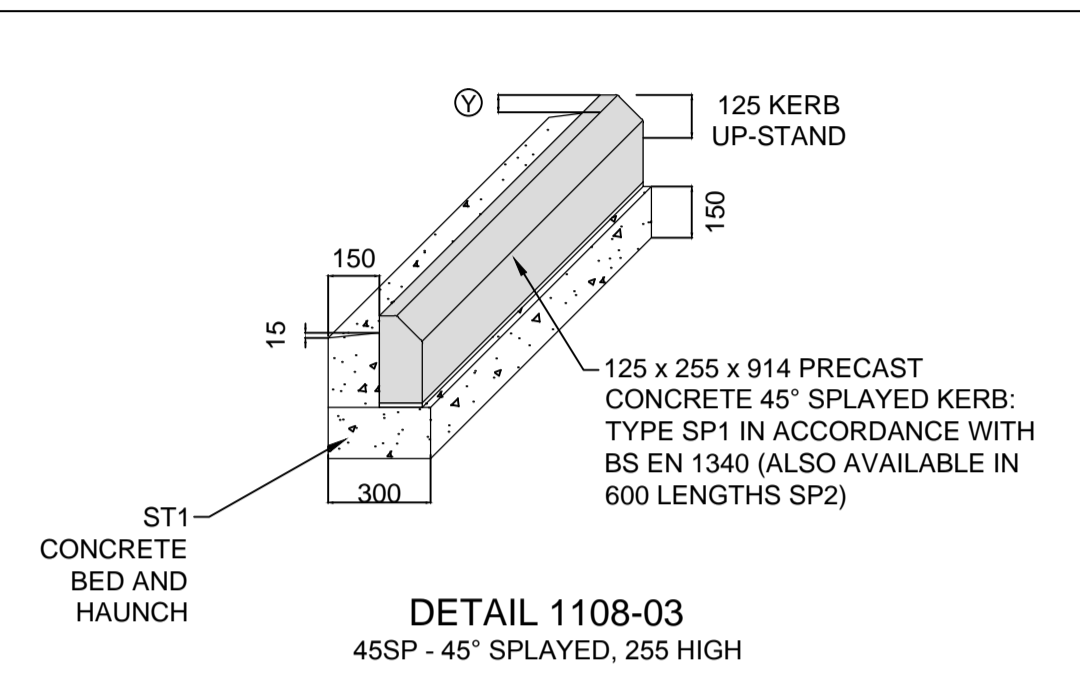
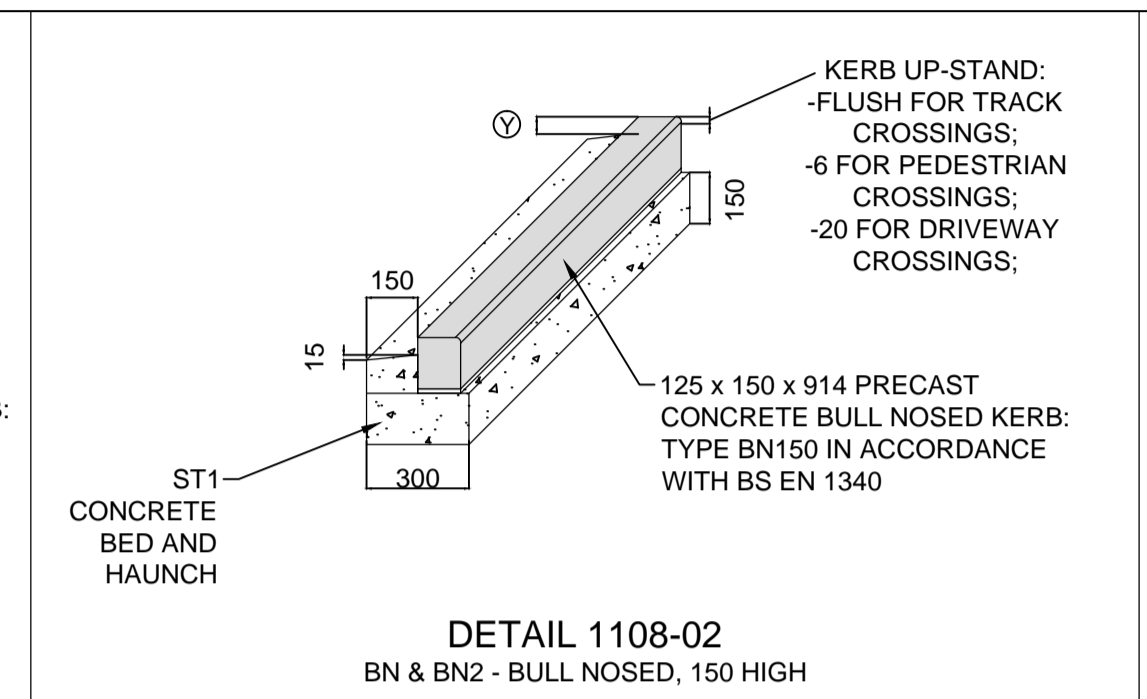
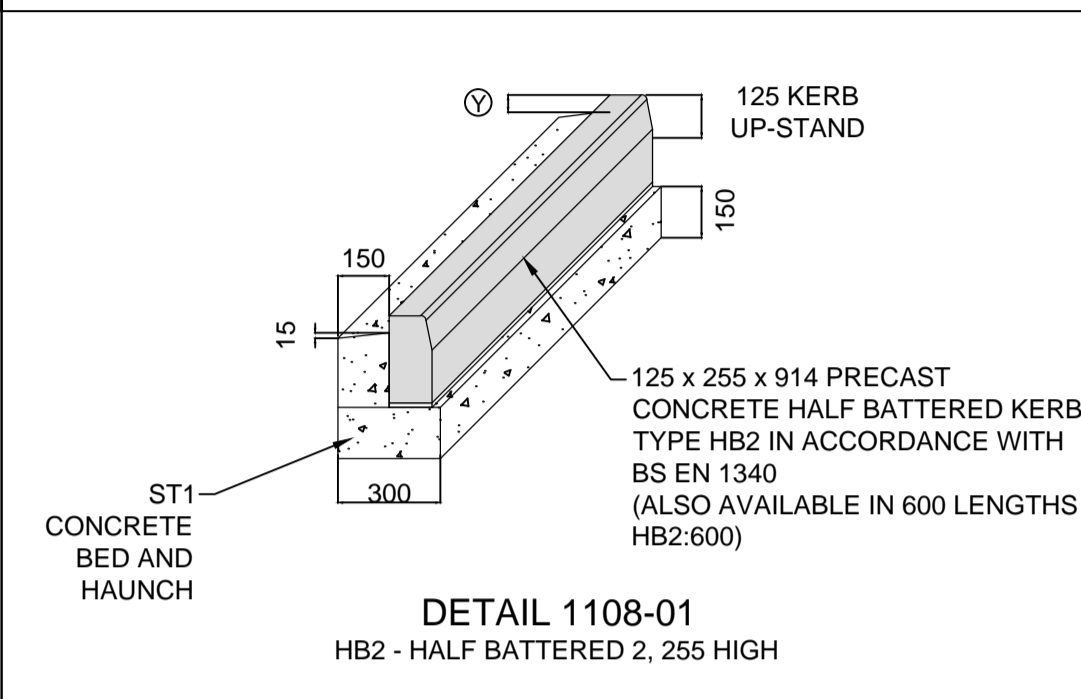


BSO A1 954mm x 841mm
 Project Management Initials: Designer: MH Checked: RM Approved: RM
 Last saved by: ONEILLJ3 Last Printed: 2017-03-24
 File name: F:\PROJECTS\HIGHWAYS-ST ATHAN\3 EXECUTION\3 DOCUMENTS\3 CAD\01 WORKING\STANDARD DETAILS\30-0000-CT-1108.DWG
 Recycled Content Paper

NOTES

- ALL DIMENSIONS SHOWN ARE IN MILLIMETRES UNLESS OTHERWISE SPECIFIED.
- DO NOT SCALE FROM THIS DRAWING.
- THIS DRAWING IS TO READ IN CONJUNCTION WITH RELEVANT LAYOUT AND DRAWINGS 60509148-SHT-0000-CT-1101 TO 1107.
- ∅ = 60mm FOR FLEXIBLE FOOTWAY CONSTRUCTION OR 80mm FOR P.C.C BLOCK FOOTWAY CONSTRUCTION.
- MORTAR SHOULD ONLY BE USED WHEN KERB LAID ON CURED CONCRETE. DESIGNATION (i) MORTAR TO BE USED.
- UNLESS SPECIFIED STEEL DOWEL BARS SHALL BE USED WHERE KERB BEDDING / BACKING IS LAID SEPARATELY. IF DOWEL BARS ARE USED THEY SHALL BE 300mm LONG, 20mm DIAMETER MILD STEEL AT 450mm CENTRES.
- TO BE READ IN CONJUNCTION WITH DETER GUIDANCE ON THE USE OF TACTILE PAVING SURFACES.
- ALL TACTILE PAVING FLAGS BEDDED ON 25mm THICK SAND ON 150mm THICK GRANULAR TYPE 1 SUB-BASE UNLESS OTHERWISE STATED.
- ALL FLAGS WITHIN 1 METRE OF THE CARRIAGEWAY ARE TO BE BEDDED ON 25mm THICK 1:5 CEMENT / SAND MORTAR ON 100mm THICK ST2 CONCRETE SUB-BASE.
- ALL TACTILE PAVING TO BE 400 x 400 x 70 FLAGS BEDDED ON 25mm THICK GRANULAR TYPE 1 SUB-BASE UNLESS OTHERWISE STATED.



AECOM

PROJECT
ST. ATHAN NORTHERN ACCESS ROAD

CLIENT
 WELSH GOVERNMENT

Llywodraeth Cymru
 Welsh Government

CONSULTANT
 AECOM
 1 CALLAGHAN SQUARE
 CARDIFF
 CF10 5BT
 TEL: (029) 20674600
 FAX: (029) 20674699

STATUS
 PLANNING SUBMISSION ISSUE

ISSUE/REVISION

NO	DATE	DESCRIPTION
A	27-03-17	PLANNING SUBMISSION ISSUE
1/1		DESCRIPTION

KEY PLAN

PROJECT NUMBER
 60509148

SHEET TITLE
 ST.ATHAN
 KERBING STANDARD DETAIL
 SHEET 1 OF 1

SHEET NUMBER
 60509148-SHT-30-0000-CT-1108

This drawing has been prepared for the use of AECOM's client. It may not be used, modified, reproduced or relied upon by third parties, except as agreed by AECOM or as required by law. AECOM accepts no responsibility, and denies any liability whatsoever, to any party that uses or relies on this drawing without AECOM's express written consent. Do not scale this document. All measurements must be obtained from the stated dimensions.