



SAFETY, HEALTH AND ENVIRONMENTAL INFORMATION

In addition to the hazards/risks normally associated with the types of work detailed on this drawing, note the following specific residual risks (Reference shall also be made to the design hazard log).

Construction
UNDERGROUND UTILITIES IN THIS AREA (INC. GAS)
WORKING ADJACENT TO WATERCOURSE
WORKING ON AND ADJACENT TO LIVE CARRIAGEWAY
MOD ACTIVITIES IN ADJACENT LAND

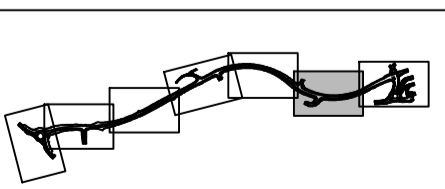
STATUS

PLANNING SUBMISSION ISSUE

ISSUE/REVISION

NO	DATE	DESCRIPTION
A	27-03-17	PLANNING SUBMISSION ISSUE

KEY PLAN



PROJECT NUMBER

60509148

SHEET TITLE

ST.ATHAN
KERBS, FOOTWAYS & PAVED AREAS
SHEET 6 OF 7

SHEET NUMBER

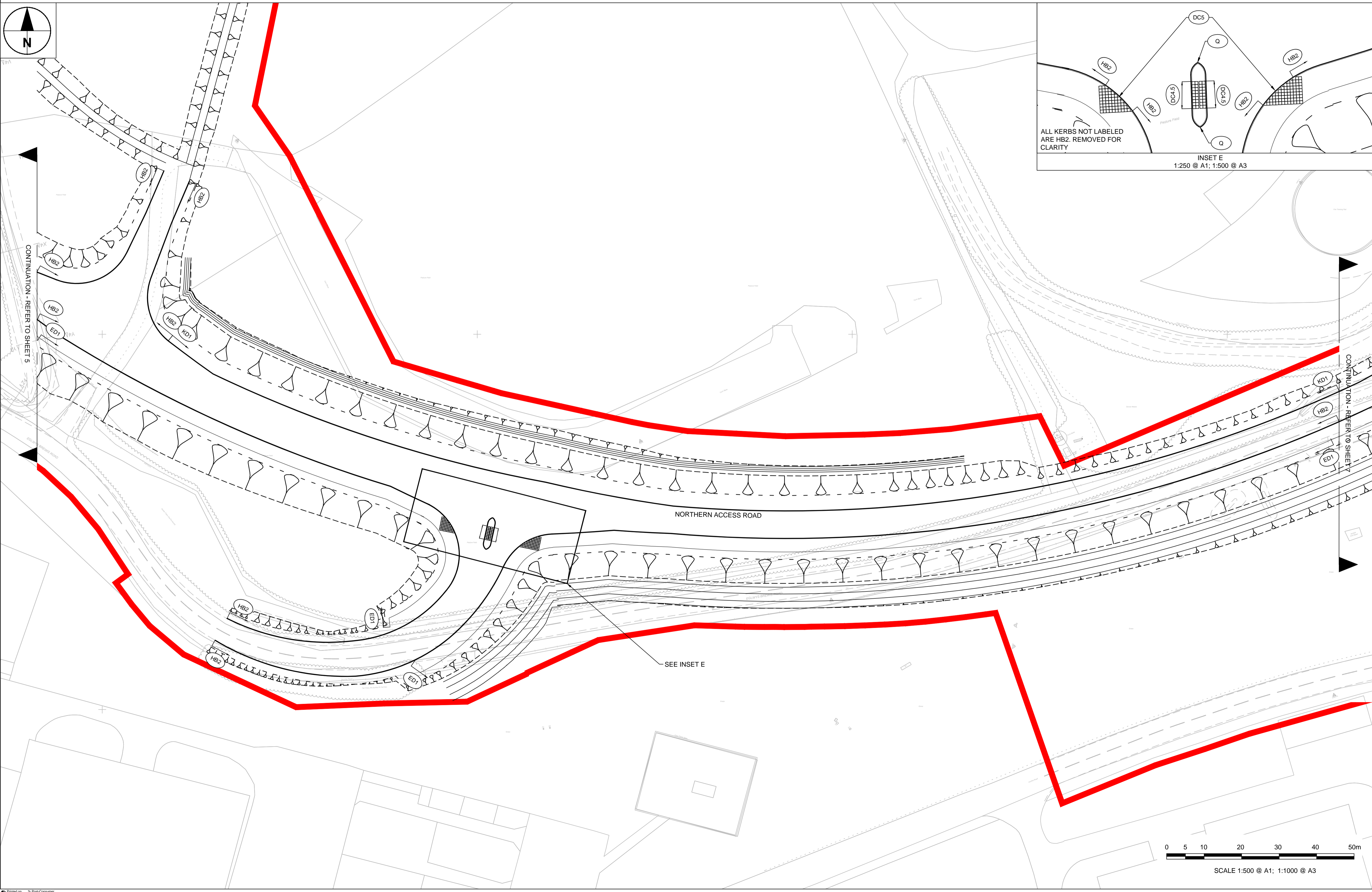
60509148-SHT-30-0000-CT-1106

NOTES

- ALL DIMENSIONS SHOWN ARE IN METERS UNLESS OTHERWISE SPECIFIED
- ALL WORKS ARE TO BE CARRIED OUT IN ACCORDANCE WITH THE CONTRACT SPECIFICATION AND THE MANUAL OF CONTRACT DOCUMENTS FOR HIGHWAY WORKS
- THIS DRAWING SHOULD BE READ IN CONJUNCTION WITH STANDARD DETAIL DRAWING 60509148-SHT-30-000-CT-1108
- TRANSITION KERBS OMITTED FOR CLARITY
- CYCLE RAMP TRANSITIONS ARE TO OCCUR OVER TWO BULLNOSE KERB UNITS WITH UPSTAND TRANSITIONING FROM 0mm TO 125mm

KEY

- STANDARD HALF BATTERED PRECAST CONCRETE KERB, 255 X 125mm. LAID WITH UPSTAND OF 125mm
- KERB DRAIN - HALF BATTERED - FOR DETAILS SEE DRAWINGS 60509148-SHT-00-000-CT-0501 TO 0505
- KERB DRAIN - 45° SPLAY - FOR DETAILS SEE DRAWINGS 60509148-SHT-00-000-CT-0501 TO 0505
- KERB DRAIN - BUS STOP - FOR DETAILS SEE DRAWINGS 60509148-SHT-00-000-CT-0501 TO 0505
- STANDARD KASSEL KERB, 334 X 435mm. LAID WITH UPSTAND OF 180mm
- STANDARD TOP FLAT EDGING KERB (50mm UPSTAND)
- STANDARD BULLNOSED PRECAST CONCRETE KERB, 150 X 125MM, LAID WITH A MAXIMUM KERB UPSTAND OF 0 - 6MM MAX
- STANDARD BULLNOSED PRECAST CONCRETE KERB, 150 X 125MM, LAID WITH A UPSTAND OF 20mm
- PROPOSED "TRAM" TACTILES 2400mm X 400mm
- PROPOSED BLISTER TACTILES 400mm X 400mm
- STANDARD HALF BATTERED QUADRANT KERB, RADIUS 455mm
- STANDARD 45° SPLAY FULL HEIGHT KERB, 255mm X 125mm. LAID WITH UPSTAND OF 125mm
- STANDARD DROPPED KERB # DENOTES NUMBER OF KERB LENGTHS
- OVER RUN AREA
- PLANNING APPLICATION BOUNDARY



ISO A1 594mm x 841mm
 Approved: RM
 Checked: TM
 Designer: AB
 Project Management Initials:
 File name: F:\PROJECTS\HIGHWAYS - ST.ATHAN\3 EXECUTION\3 DOCUMENTS\308 CAD\01 WORKING\DRAWINGS\1100 - KERBS, FOOTWAYS AND PAVED AREAS\60509148-SHT-30-0000-CT-1101_1107.DWG
 Last saved by: HOLMESM
 Last plotted: 2017-03-24
 This drawing has been prepared for the use of AECOM's client. It may not be used, modified, reproduced or relied upon by third parties, except as agreed by AECOM or as required by law. AECOM accepts no responsibility, and denies any liability whatsoever, to any party that uses or relies on this drawing without AECOM's express written consent. Do not scale this document. All measurements must be obtained from the stated dimensions.