

**NOTES**

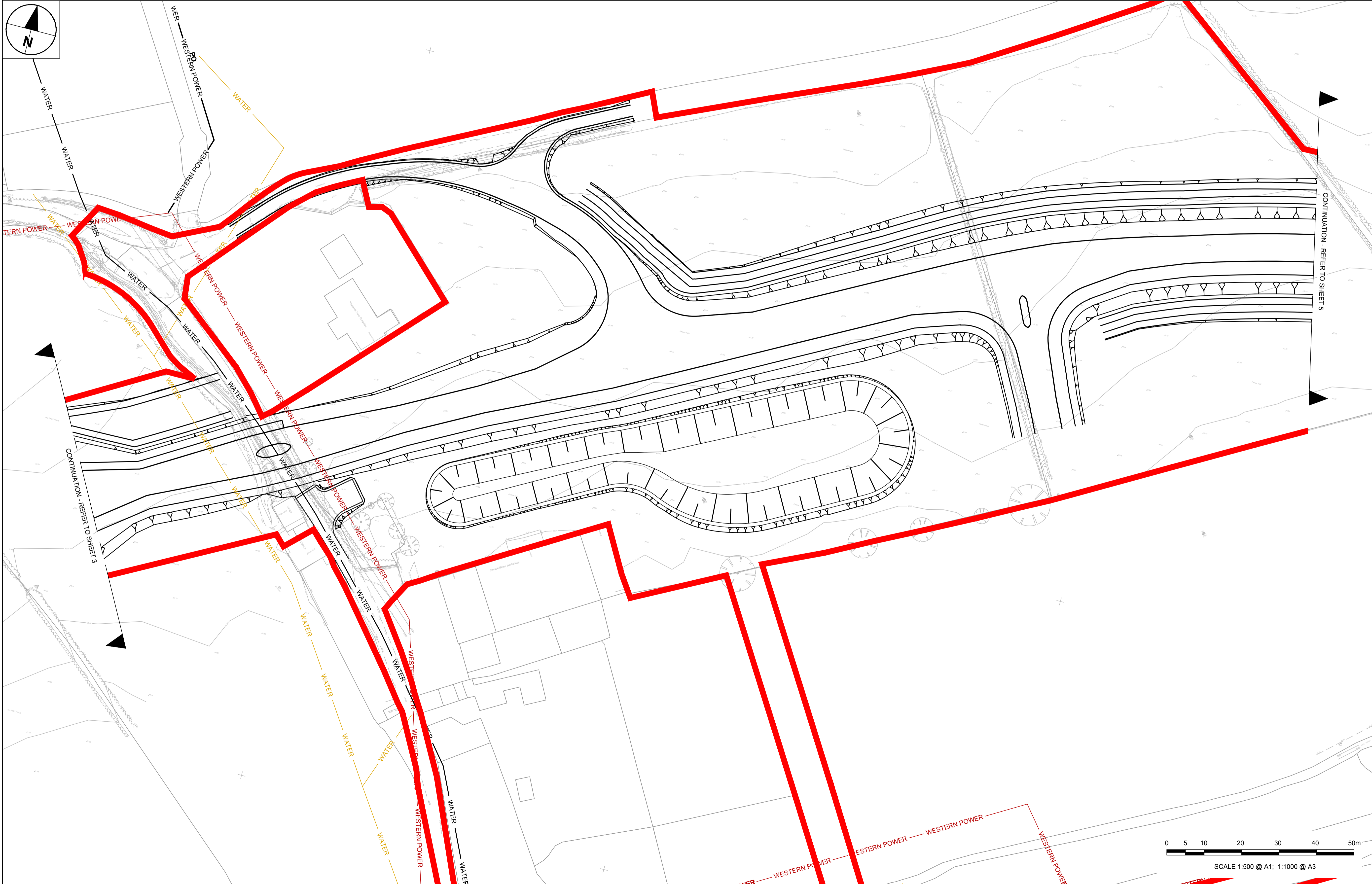
1. ALL WORKS ARE TO BE CARRIED OUT IN ACCORDANCE WITH THE CONTRACT SPECIFICATION AND THE MANUAL OF CONTRACT DOCUMENTS FOR HIGHWAY WORKS.
2. ALL WORKING HOURS AND TRAFFIC MANAGEMENT MEASURES ARE TO BE AGREED WITH THE LOCAL HIGHWAY AUTHORITY AND DEPLOYED IN ACCORDANCE WITH CHAPTER 8 OF THE TRAFFIC SIGNS MANUAL.
3. LOCATION OF SITE COMPOUND TO BE AGREED WITH THE LOCAL HIGHWAY AUTHORITY PRIOR TO WORKS COMMENCING. ALL MOVEMENT OF PLANT SHOULD BE IN ACCORDANCE WITH RECOGNISED GOOD INDUSTRY PRACTICE. BANKSMEN SHOULD BE PROVIDED WHEN REQUIRED.
4. THE GENERAL PUBLIC SHOULD BE SEPARATED FROM THE WORKS WITH ADEQUATE LATERAL CLEARANCE AND APPROPRIATE SAFETY ZONES PROVIDED IN ACCORDANCE WITH CHAPTER 8 OF THE TRAFFIC SIGNS MANUAL.
5. ACCESS TO PRIVATE PROPERTIES MUST BE MAINTAINED AT ALL TIMES UNLESS OTHERWISE AGREED WITH THE AFFECTED PARTY AND THE LOCAL HIGHWAY AUTHORITY.
6. MEASURES SHOULD BE DEPLOYED TO ENSURE NOISE, VIBRATION AND DUST IS MINIMISED.
7. ALL BURIED SERVICES ARE TO BE POSITIVELY LOCATED ON SITE PRIOR TO EXCAVATION. CAT SCANS SHALL BE COMPLETED PRIOR TO EXCAVATION WITH SERVICE LOCATIONS MARKED UP ON SITE. OPERATIVES SHALL

EMPLOY HAND DIGGING METHODS WHEN WORKING IN CLOSE PROXIMITY TO BURIED SERVICES. STATUTORY UNDERTAKER'S PLANT SHALL BE PROTECTED AS NECESSARY. ADDITIONAL TRIAL PITS SHALL BE EXCAVATED AS REQUIRED.

9. THIS DRAWING IS BASED UPON INFORMATION SUPPLIED BY THE STATUTORY UNDERTAKERS, THE ACCURACY OF WHICH CANNOT BE GUARANTEED.

**KEY**

- ELECTRIC — OVERHEAD CABLE UNKNOWN
- RAF — RAF OWNED DUCT UNKNOWN
- WESTERN POWER — WESTERN POWER LOW VOLTAGE UNDERGROUND
- WESTERN POWER — WESTERN POWER SERVICE UNDERGROUND
- WESTERN POWER — WESTERN POWER 11KV UNDERGROUND
- WESTERN POWER — WESTERN POWER PL UNDERGROUND
- WESTERN POWER — WESTERN POWER 66KV UNDERGROUND
- WESTERN POWER — WESTERN POWER 66KV OVERHEAD
- WESTERN POWER — WESTERN POWER 132KV OVERHEAD
- GAS — WALES AND WEST UNDERGROUND HIGH PRESSURE
- GAS — WALES AND WEST UNDERGROUND MEDIUM PRESSURE
- GAS — WALES AND WEST UNDERGROUND LOW PRESSURE
- BT — BT DUCT
- BT — BT UNDERGROUND
- BT — BT OVERHEAD
- WATER — FOUL SEWER
- WATER — TRUNK SEWER
- WATER — SURFACE WATER SEWER
- WATER — DISTRIBUTION SEWER
- VIRGIN — VIRGIN CABLE
- PLANNING BOUNDARY



**AECOM**

PROJECT  
**ST. ATHAN NORTHERN ACCESS ROAD**

CLIENT  
WELSH GOVERNMENT

Llywodraeth Cymru  
Welsh Government

CONSULTANT  
AECOM  
1 CALLAGHAN SQUARE  
CARDIFF  
CF10 5BT  
TEL: (029) 20674600  
FAX: (029) 20674699

**SAFETY, HEALTH AND ENVIRONMENTAL INFORMATION**  
In addition to the hazards/risks normally associated with the types of work detailed on this drawing, note the following specific residual risks (Reference shall also be made to the design hazard log).

Construction  
WORKING ON AND ADJACENT TO LIVE CARRIAGEWAY  
HIGH PERCENTAGE OF CARAVAN TRAILER TRAFFIC IN THIS AREA  
OVERHEAD ELECTRICITY CABLES OVER CARRIAGEWAY

**STATUS**  
PLANNING SUBMISSION ISSUE

**ISSUE/REVISION**

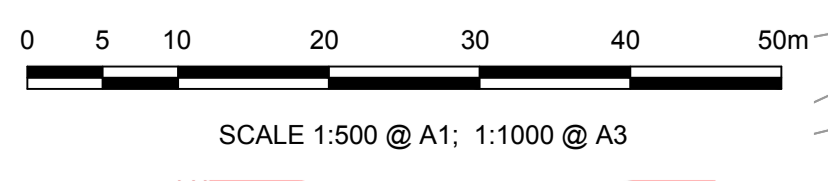
IR	DATE	DESCRIPTION
B	25-05-2017	BOUNDARY EXTENTS UPDATED
A	27-03-2017	PLANNING SUBMISSION ISSUE

**KEY PLAN**

**PROJECT NUMBER**  
60509148

**SHEET TITLE**  
ST ATHAN EXISTING UTILITIES SHEET 4 OF 7

**SHEET NUMBER**  
60509148-SHT-30-0000-CT-0554



This drawing has been prepared for the use of AECOM's client. It may not be used, modified, reproduced or relied upon by third parties, except as agreed by AECOM or as required by law. AECOM accepts no responsibility, and denies any liability, whatsoever to any party that uses or relies on this drawing without AECOM's express written consent. Do not scale this document. All measurements must be obtained from the stated dimensions.