



PROJECT

ST. ATHAN
NORTHERN
ACCESS
ROAD

CLIENT

WELSH GOVERNMENT



Llywodraeth Cymru
Welsh Government

CONSULTANT

AECOM
1 CALLAGHAN SQUARE
CARDIFF
CF10 5BT
TEL: (029) 20674600
FAX: (029) 20674699

SAFETY, HEALTH AND ENVIRONMENTAL INFORMATION

In addition to the hazards/risks normally associated with the types of work detailed on this drawing, note the following specific residual risks (Reference shall also be made to the design hazard log).

- Construction
- OVERHEAD ELECTRICITY CABLES OVER CARRIAGEWAY
- KNOWN BADGER PRESENCE IN AREA

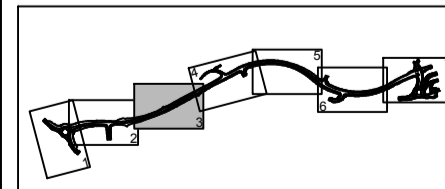
STATUS

PLANNING SUBMISSION ISSUE

ISSUE/REVISION

IR	DATE	DESCRIPTION
A	27-03-2017	PLANNING SUBMISSION ISSUE

KEY PLAN



PROJECT NUMBER

60509148

SHEET TITLE

ST ATHAN
EXISTING UTILITIES
SHEET 3 OF 7

SHEET NUMBER

60509148-SHT-30-0000-CT-0553

NOTES

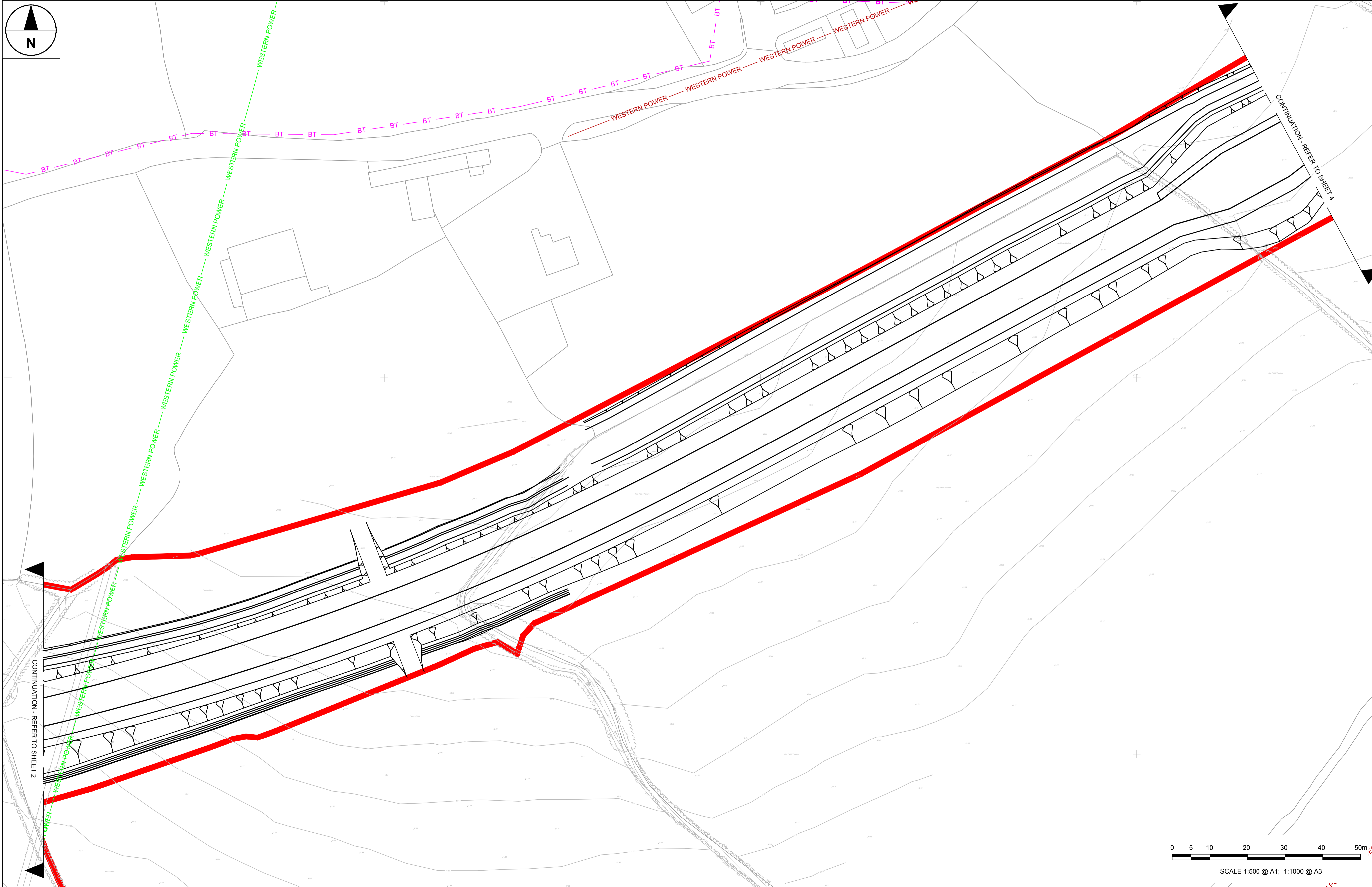
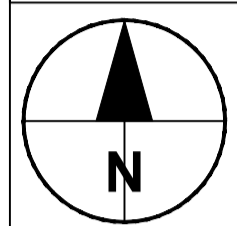
1. ALL WORKS ARE TO BE CARRIED OUT IN ACCORDANCE WITH THE CONTRACT SPECIFICATION AND THE MANUAL OF CONTRACT DOCUMENTS FOR HIGHWAY WORKS.
2. ALL WORKING HOURS AND TRAFFIC MANAGEMENT MEASURES ARE TO BE AGREED WITH THE LOCAL HIGHWAY AUTHORITY AND DEPLOYED IN ACCORDANCE WITH CHAPTER 8 OF THE TRAFFIC SIGNS MANUAL.
3. LOCATION OF SITE COMPOUND TO BE AGREED WITH THE LOCAL HIGHWAY AUTHORITY PRIOR TO WORKS COMMENCING. ALL MOVEMENT OF PLANT SHOULD BE IN ACCORDANCE WITH RECOGNISED GOOD INDUSTRY PRACTICE. BANKSMEN SHOULD BE PROVIDED WHEN REQUIRED.
4. THE GENERAL PUBLIC SHOULD BE SEPARATED FROM THE WORKS WITH ADEQUATE LATERAL CLEARANCE AND APPROPRIATE SAFETY ZONES PROVIDED IN ACCORDANCE WITH CHAPTER 8 OF THE TRAFFIC SIGNS MANUAL.
5. ACCESS TO PRIVATE PROPERTIES MUST BE MAINTAINED AT ALL TIMES UNLESS OTHERWISE AGREED WITH THE AFFECTED PARTY AND THE LOCAL HIGHWAY AUTHORITY.
6. MEASURES SHOULD BE DEPLOYED TO ENSURE NOISE, VIBRATION AND DUST IS MINIMISED.
7. ALL BURIED SERVICES ARE TO BE POSITIVELY LOCATED ON SITE PRIOR TO EXCAVATION. CAT SCANS SHALL BE COMPLETED PRIOR TO EXCAVATION WITH SERVICE LOCATIONS MARKED UP ON SITE. OPERATIVES SHALL

EMPLOY HAND DIGGING METHODS WHEN WORKING IN CLOSE PROXIMITY TO BURIED SERVICES. STATUTORY UNDERTAKER'S PLANT SHALL BE PROTECTED AS NECESSARY. ADDITIONAL TRIAL PITS SHALL BE EXCAVATED AS REQUIRED.

9. THIS DRAWING IS BASED UPON INFORMATION SUPPLIED BY THE STATUTORY UNDERTAKERS, THE ACCURACY OF WHICH CANNOT BE GUARANTEED.

KEY

- ELECTRIC OVERHEAD CABLE UNKNOWN
- RAF RAF OWNED DUCT UNKNOWN
- WESTERN POWER WESTERN POWER LOW VOLTAGE UNDERGROUND
- WESTERN POWER WESTERN POWER SERVICE UNDERGROUND
- WESTERN POWER WESTERN POWER 11KV UNDERGROUND
- WESTERN POWER WESTERN POWER PL UNDERGROUND
- WESTERN POWER WESTERN POWER 66KV UNDERGROUND
- WESTERN POWER WESTERN POWER 66KV OVERHEAD
- WESTERN POWER WESTERN POWER 132KV OVERHEAD
- GAS WALES AND WEST UNDERGROUND HIGH PRESSURE
- GAS WALES AND WEST UNDERGROUND LOW PRESSURE
- BT BT DUCT
- BT BT UNDERGROUND
- BT BT OVERHEAD
- WATER FOUL SEWER
- WATER TRUNK SEWER
- WATER SURFACE WATER SEWER
- WATER DISTRIBUTION SEWER
- VIRGIN VIRGIN CABLE
- PLANNING BOUNDARY



SCALE 1:500 @ A1; 1:1000 @ A3

ISO A1 594mm x 841mm
Approved: RM
Checked: TM
Designer: AS
Project Management Initials:
File name: P:\UKCDF\1\PROJECTS\HIGHWAYS - ST ATHAN\GIS EXECUTION\GIS DOCUMENTS\60509148-SHT-30-0000-CT-0553_0553.DWG
Last saved by: CASSIDYD
Last printed: 2017/05/25

This drawing has been prepared for the use of AECOM's client. It may not be used, modified, reproduced or relied upon by third parties, except as agreed by AECOM or as required by law. AECOM accepts no responsibility, and denies any liability, whatsoever, to any party that uses or relies on this drawing without AECOM's express written consent. Do not scale this document. All measurements must be obtained from the stated dimensions.