

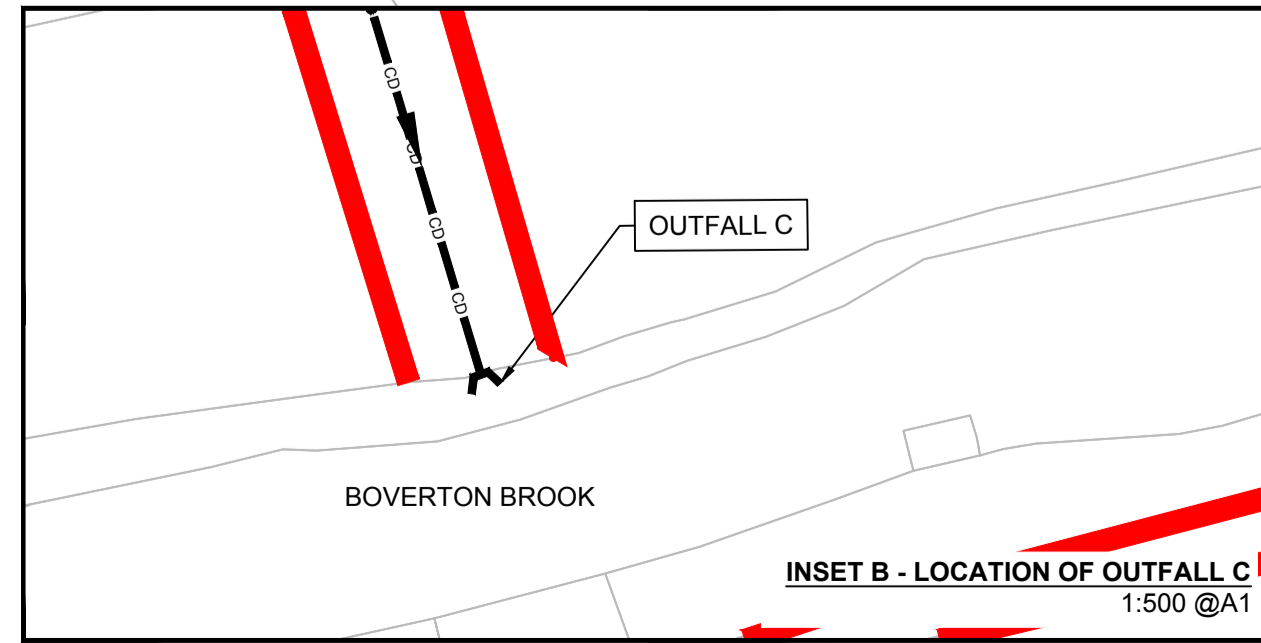
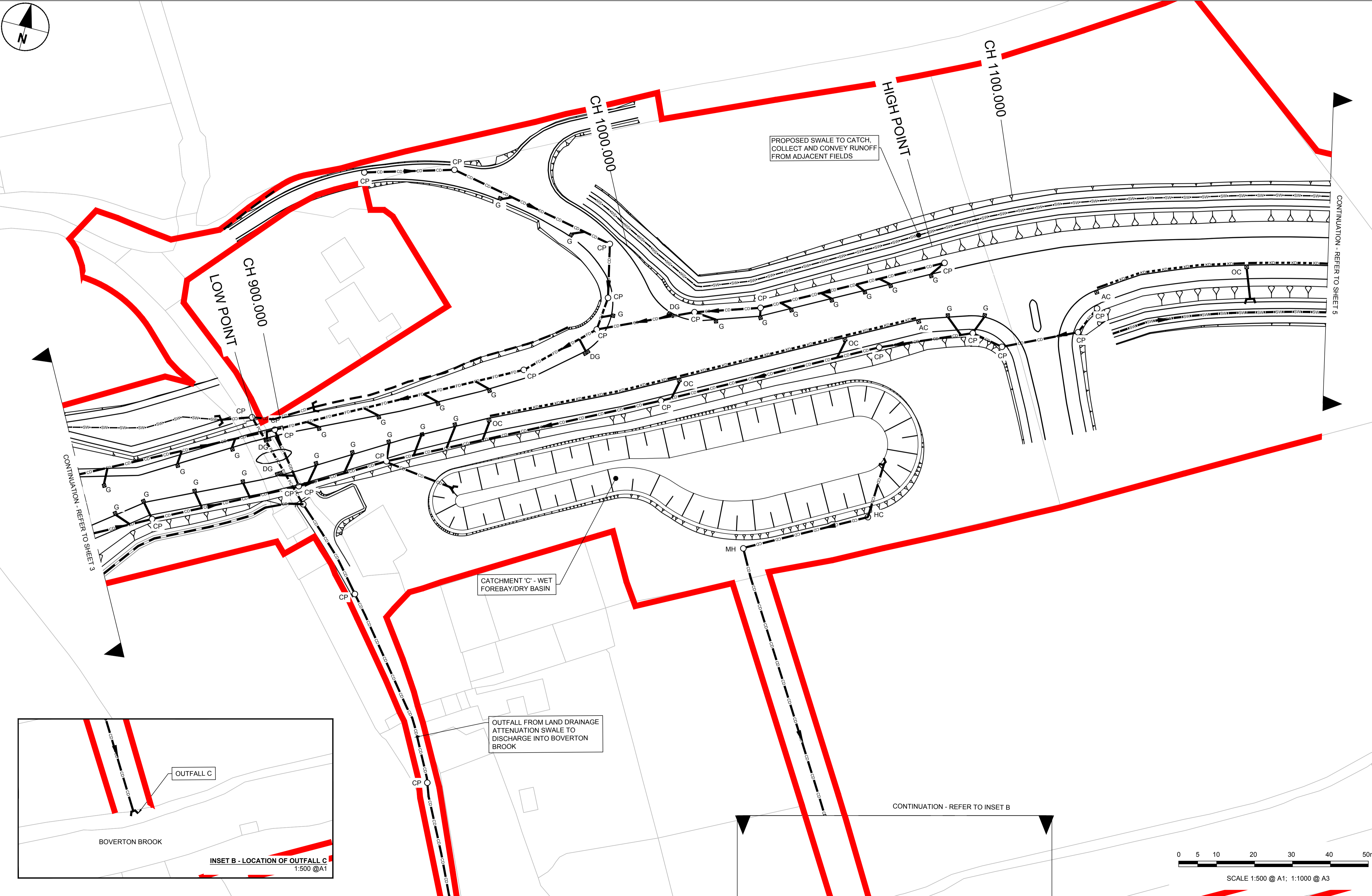


NOTES

- ALL DIMENSIONS SHOWN ARE IN METRES UNLESS OTHERWISE SPECIFIED.
- ALL WORKS ARE TO BE CARRIED OUT IN ACCORDANCE WITH THE CONTRACT SPECIFICATION AND THE MANUAL OF CONTRACT DOCUMENTS FOR HIGHWAY WORKS (MCHW).
- ALL WORKING HOURS AND TRAFFIC MANAGEMENT MEASURES ARE TO BE AGREED WITH THE LOCAL HIGHWAY AUTHORITY AND DEPLOYED IN ACCORDANCE WITH CHAPTER 8 OF THE TRAFFIC SIGNS MANUAL.
- LOCATION OF SITE COMPOUND TO BE AGREED WITH THE LOCAL HIGHWAY AUTHORITY PRIOR TO WORKS COMMENCING. ALL MOVEMENT OF PLANT SHOULD BE IN ACCORDANCE WITH RECOGNISED GOOD INDUSTRY PRACTICE. BANKSMEN SHOULD BE PROVIDED WHEN REQUIRED.
- THE GENERAL PUBLIC SHOULD BE SEPARATED FROM THE WORKS WITH ADEQUATE LATERAL CLEARANCE AND APPROPRIATE SAFETY ZONES PROVIDED IN ACCORDANCE WITH CHAPTER 8 OF THE TRAFFIC SIGNS MANUAL.
- ACCESS TO PRIVATE PROPERTIES MUST BE MAINTAINED AT ALL TIMES UNLESS OTHERWISE AGREED WITH THE AFFECTED PARTY AND THE LOCAL HIGHWAY AUTHORITY.
- MEASURES SHOULD BE DEPLOYED TO ENSURE NOISE, VIBRATION AND DUST IS MINIMISED.
- ALL BURIED SERVICES ARE TO BE POSITIVELY LOCATED ON SITE PRIOR TO EXCAVATION. CAT SCANS SHALL BE COMPLETED PRIOR TO EXCAVATION WITH SERVICE LOCATIONS MARKED UP ON SITE. OPERATIVES SHALL EMPLOY HAND DIGGING METHODS WHEN WORKING IN CLOSE PROXIMITY TO BURIED SERVICES. STATUTORY UNDERTAKER'S PLANT SHALL BE PROTECTED AS NECESSARY. ADDITIONAL TRIAL PITS SHALL BE EXCAVATED AS REQUIRED.

KEY

- | | | | | | |
|--|---------------------------------|--|-----------------------|--|----------------|
| | SURFACE WATER CARRIER DRAIN | | MANHOLE | | RODDING EYE |
| | FILTER DRAIN | | CATCHPIT | | HEADWALL |
| | GULLY CONNECTION | | GULLY | | ACCESS CHAMBER |
| | PROPOSED CULVERT | | DOUBLE GULLY | | OUTLET CHAMBER |
| | COMBINED KERB DRAIN | | DOUBLE OUTLET CHAMBER | | PENSTOCK |
| | SWALE | | HYDROBRAKE CHAMBER | | |
| | DITCH | | | | |
| | PROPOSED SLOPE DRAIN (CUTTINGS) | | | | |
| | PLANNING APPLICATION BOUNDARY | | | | |

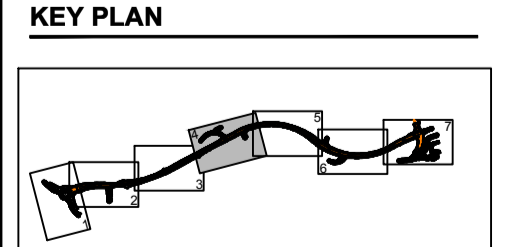


This drawing has been prepared for the use of AECOM as client. It may not be used, modified, reproduced or relied upon by third parties, except as agreed by AECOM or as required by law. AECOM accepts no responsibility, and denies any liability, whatsoever, to any party that uses or relies on this drawing without AECOM's express written consent. Do not scale this document. All measurements must be obtained from the stated dimensions.

STATUS

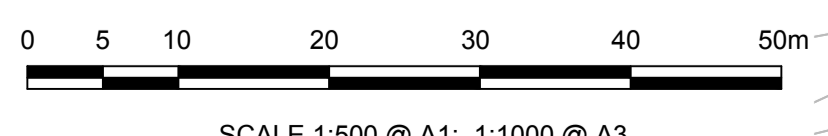
PLANNING SUBMISSION ISSUE

ISSUE/REVISION		
B	25-05-2017 BOUNDARY EXTENTS UPDATED	
A	27-03-2017 FOR PLANNING	
IR	DATE	DESCRIPTION



PROJECT NUMBER
60509148

SHEET TITLE
ST ATHAN
DRAINAGE GENERAL ARRANGEMENT
PRELIM DESIGN
SHEET 4 OF 7
SHEET NUMBER
60509148-SHT-30-0000-CT-0504



ISO A1 841mm x 610mm
Approved: RM
Checked: AT
Designer: MH
Project Management Initials:
Project Management Initials:
File name: P:\UK\DF-TP\PROJECTS\HIGHWAYS - ST ATHAN\B3 EXECUTION\B3 DOCUMENTS\B3\05-DRAINAGE\GENERAL ARRANGEMENT DWG - Last saved by: SHORTEE - Last Poked: 2017-05-25