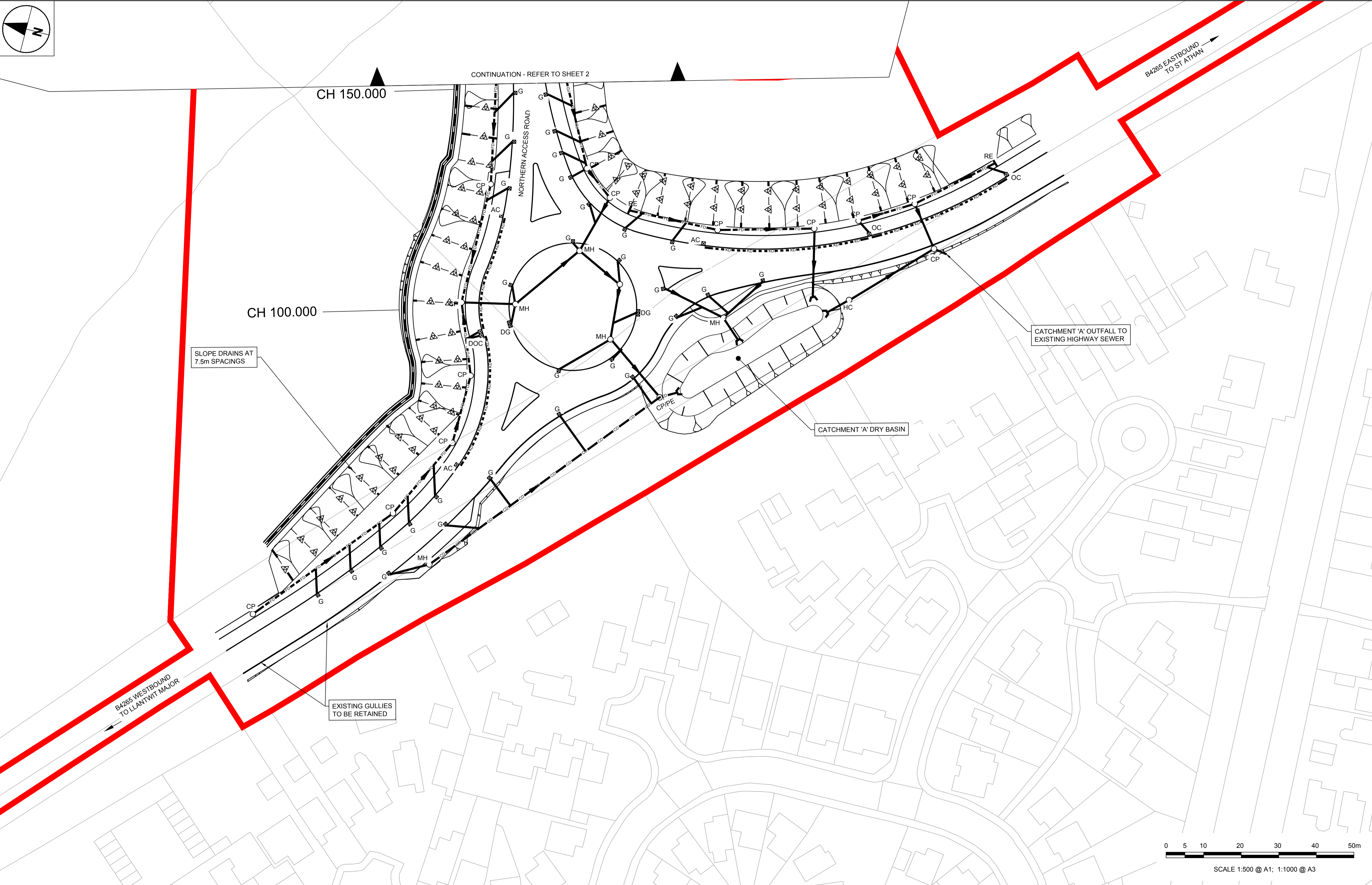
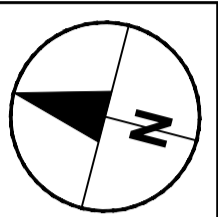


NOTES

- ALL DIMENSIONS SHOWN ARE IN METRES UNLESS OTHERWISE SPECIFIED.
- ALL WORKS ARE TO BE CARRIED OUT IN ACCORDANCE WITH THE CONTRACT SPECIFICATION AND THE MANUAL OF CONTRACT DOCUMENTS FOR HIGHWAY WORKS (MCHW).
- ALL WORKING HOURS AND TRAFFIC MANAGEMENT MEASURES ARE TO BE AGREED WITH THE LOCAL HIGHWAY AUTHORITY AND DEPLOYED IN ACCORDANCE WITH CHAPTER 8 OF THE TRAFFIC SIGNS MANUAL.
- LOCATION OF SITE COMPOUND TO BE AGREED WITH THE LOCAL HIGHWAY AUTHORITY PRIOR TO WORKS COMMENCING. ALL MOVEMENT OF PLANT SHOULD BE IN ACCORDANCE WITH RECOGNISED GOOD INDUSTRY PRACTICE. BANKSMEN SHOULD BE PROVIDED WHEN REQUIRED.
- THE GENERAL PUBLIC SHOULD BE SEPARATED FROM THE WORKS WITH ADEQUATE LATERAL CLEARANCE AND APPROPRIATE SAFETY ZONES PROVIDED IN ACCORDANCE WITH CHAPTER 8 OF THE TRAFFIC SIGNS MANUAL.
- ACCESS TO PRIVATE PROPERTIES MUST BE MAINTAINED AT ALL TIMES UNLESS OTHERWISE AGREED WITH THE AFFECTED PARTY AND THE LOCAL HIGHWAY AUTHORITY.
- MEASURES SHOULD BE DEPLOYED TO ENSURE NOISE, VIBRATION AND DUST IS MINIMISED.
- ALL BURIED SERVICES ARE TO BE POSITIVELY LOCATED ON SITE PRIOR TO EXCAVATION. CAT SCANS SHALL BE COMPLETED PRIOR TO EXCAVATION WITH SERVICE LOCATIONS MARKED UP ON SITE. OPERATIVES SHALL EMPLOY HAND DIGGING METHODS WHEN WORKING IN CLOSE PROXIMITY TO BURIED SERVICES. STATUTORY UNDERTAKER'S PLANT SHALL BE PROTECTED AS NECESSARY. ADDITIONAL TRIAL PITS SHALL BE EXCAVATED AS REQUIRED.

KEY

- SURFACE WATER CARRIER DRAIN
- FILTER DRAIN
- GULLY CONNECTION
- PROPOSED CULVERT
- COMBINED KERB DRAIN
- SWALE
- DITCH
- PROPOSED SLOPE DRAIN (CUTTINGS)
- PLANNING APPLICATION BOUNDARY
- MH MANHOLE
- CP CATCHPIT
- G GULLY
- DG DOUBLE GULLY
- AC ACCESS CHAMBER
- OC OUTLET CHAMBER
- DOC DOUBLE OUTLET CHAMBER
- PE PENSTOCK
- HC HYDROBRAKE CHAMBER
- RE RODDING EYE
- HEADWALL



PROJECT

**ST. ATHAN
NORTHERN
ACCESS
ROAD**

CLIENT

WELSH GOVERNMENT



**Llywodraeth Cymru
Welsh Government**

CONSULTANT

AECOM
1 CALLAGHAN SQUARE
CARDIFF
CF10 5BT
TEL: (029) 20674600
FAX: (029) 20674699

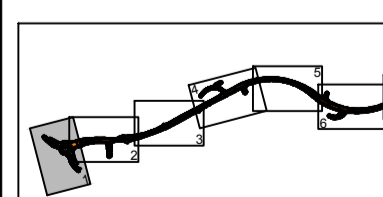
STATUS

PLANNING SUBMISSION ISSUE

ISSUE/REVISION

| IR | DATE | DESCRIPTION |
|----|------------|--------------|
| A | 27-03-2017 | FOR PLANNING |

KEY PLAN



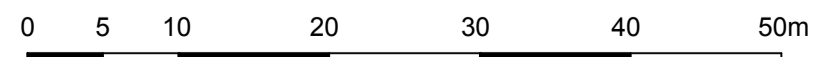
PROJECT NUMBER

60509148

SHEET TITLE

ST ATHAN
DRAINAGE GENERAL ARRANGEMENT
PRELIM DESIGN
SHEET 1 OF 7
SHEET NUMBER

60509148-SHT-30-0000-CT-0501



SCALE 1:500 @ A1; 1:1000 @ A3

ISO A1 594mm x 841mm
 Project Management File: Designer: BH
 Checked: AT
 Approved: RM
 File name: F:\PROJECTS\HIGHWAYS - ST ATHAN\DESIGN\DOCUMENTS\06 CAD\01 WORKING\DRAWINGS\0600 - DRAINAGE GENERAL ARRANGEMENT.DWG
 Last saved by: CASSIDY
 Last saved: 2017/05/24
 Printed on: %Foil-Consumer Recycled Content Paper

This drawing has been prepared for the use of AECOM's client. It may not be used, modified, reproduced or relied upon by third parties, except as agreed by AECOM or as required by law. AECOM accepts no responsibility, and denies any liability, whatsoever, to any party that uses or relies on this drawing without AECOM's express written consent. Do not scale this document. All measurements must be obtained from the stated dimensions.