



PROJECT

ST. ATHAN
NORTHERN
ACCESS
ROAD

CLIENT

WELSH GOVERNMENT



Llywodraeth Cymru
Welsh Government

CONSULTANT

AECOM
1 CALLAGHAN SQUARE
CARDIFF
CF10 5BT
TEL: (029) 20674600
FAX: (029) 20674699

SAFETY, HEALTH AND ENVIRONMENTAL INFORMATION

In addition to the hazards/risks normally associated with the types of work detailed on this drawing, note the following specific residual risks (Reference shall also be made to the design hazard log).

- Construction
- OVERHEAD ELECTRICITY CABLES OVER CARRIAGEWAY
- KNOWN BADGER PRESENCE IN AREA

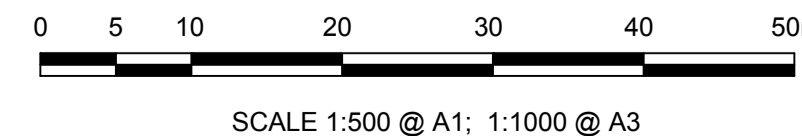
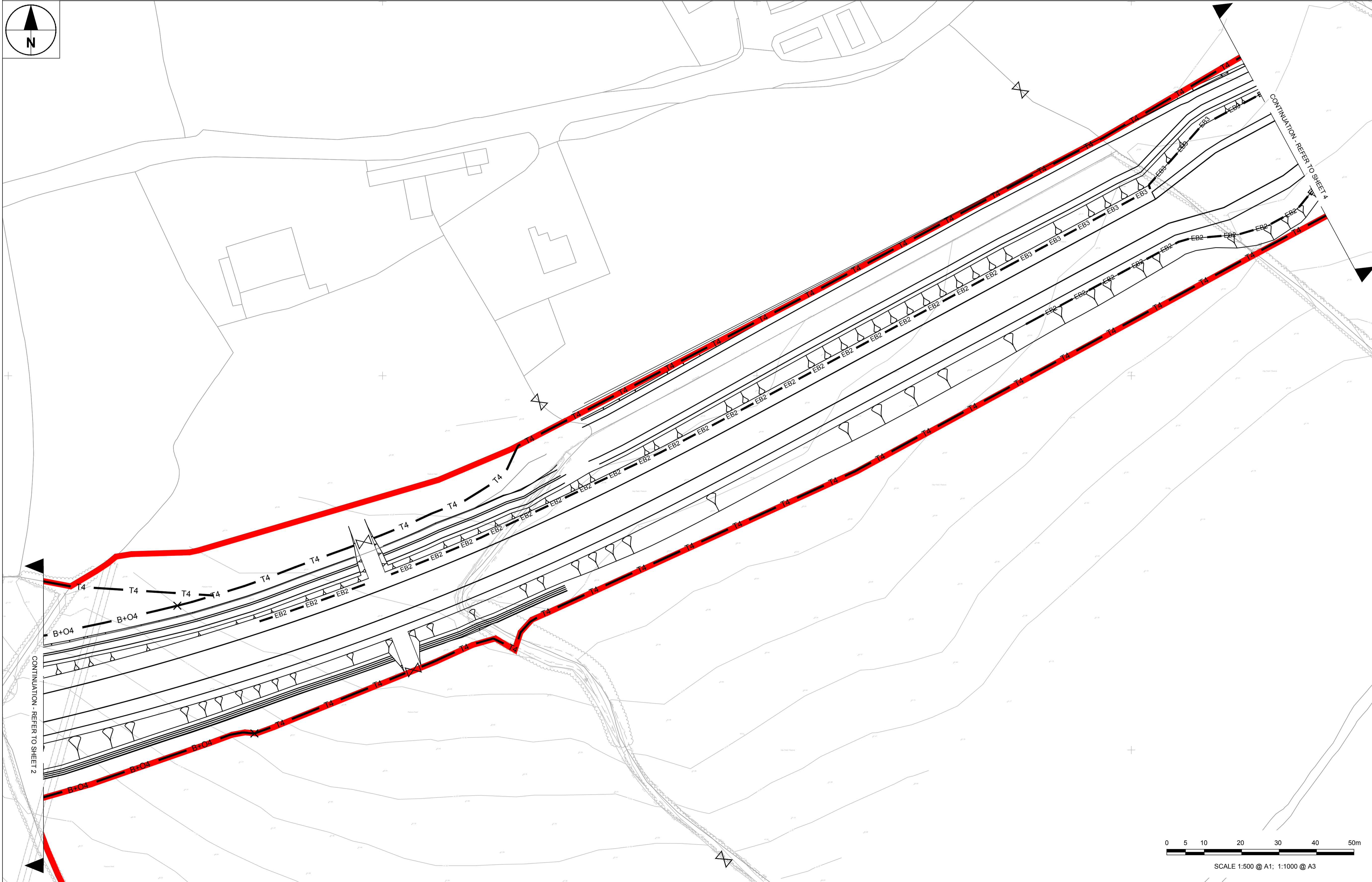
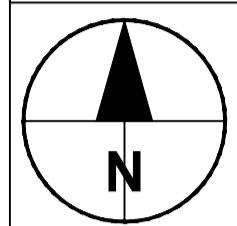
NOTES

1. ALL DIMENSIONS SHOWN ARE IN METRES UNLESS OTHERWISE SPECIFIED
2. ALL WORKS ARE TO BE CARRIED OUT IN ACCORDANCE WITH THE CONTRACT SPECIFICATION AND THE MANUAL OF CONTRACT DOCUMENTS FOR HIGHWAY WORKS (MCHW).
3. DRAWING SHOULD BE READ IN CONJUNCTION WITH THE ACCOMODATION WORKS SERIES.
4. ALL WORKING HOURS AND TRAFFIC MANAGEMENT MEASURES ARE TO BE AGREED WITH THE LOCAL HIGHWAY AUTHORITY AND DEPLOYED IN ACCORDANCE WITH CHAPTER 8 OF THE TRAFFIC SIGNS MANUAL.
5. LOCATION OF SITE COMPOUND TO BE AGREED WITH THE LOCAL HIGHWAY AUTHORITY PRIOR TO WORKS COMMENCING. ALL MOVEMENT OF PLANT SHOULD BE IN ACCORDANCE WITH RECOGNISED GOOD INDUSTRY PRACTICE. BANKSMEN SHOULD BE PROVIDED WHEN REQUIRED.
6. THE GENERAL PUBLIC SHOULD BE SEPARATED FROM THE WORKS WITH ADEQUATE LATERAL CLEARANCE AND APPROPRIATE SAFETY ZONES PROVIDED IN ACCORDANCE WITH CHAPTER 8 OF THE TRAFFIC SIGNS MANUAL.
7. ACCESS TO PRIVATE PROPERTIES MUST BE MAINTAINED AT ALL TIMES UNLESS OTHERWISE AGREED WITH THE AFFECTED PARTY AND THE LOCAL HIGHWAY AUTHORITY.
8. MEASURES SHOULD BE DEPLOYED TO ENSURE NOISE, VIBRATION AND DUST IS MINIMISED.
9. ALL BURIED SERVICES ARE TO BE POSITIVELY LOCATED ON SITE PRIOR TO EXCAVATION. CAT SCANS SHALL BE COMPLETED PRIOR TO EXCAVATION WITH SERVICE LOCATIONS MARKED UP ON SITE. OPERATIVES SHALL EMPLOY HAND DIGGING METHODS WHEN WORKING IN CLOSE PROXIMITY TO BURIED SERVICES. STATUTORY UNDERTAKER'S PLANT SHALL BE PROTECTED AS NECESSARY. ADDITIONAL TRIAL PITS SHALL BE EXCAVATED AS REQUIRED.

KEY

- PLANNING APPLICATION BOUNDARY
- T4 ——— TIMBER POST AND 4 RAIL (REFER TO MCHW, VOLUME 3, SERIES H DRAWING HCD3)
- PD ——— SECURITY FENCING TYPE TO BE CONFIRMED ON RECEPTION OF ACCOMMODATION WORKS
- B+O4 ——— TIMBER POST AND 4 RAIL WITH BADGER AND OTTER MESH (REFER TO MCHW, VOLUME 3, SERIES H DRAWING HCD48 TYPE 8)
- W4 ——— TIMBER POST AND WIRE (REFER TO MCHW, VOLUME 3, SERIES H DRAWING HCD1 TYPE 2)
- EB1 ——— 3m HIGH STONE CLAD WALL (REFER TO DRAWING 60509148-SHT-30-0000-CT-0308 FOR DETAILS)
- EB2 ——— 2.5 m REFLECTIVE ENVIRONMENTAL BARRIER (REFER TO DRAWING XX FOR DETAILS)
- EB3 ——— 2.5 m ABSORPTIVE ENVIRONMENTAL BARRIER (REFER TO DRAWING XX FOR DETAILS)

- CHANGE OF FENCE TYPE
- STEEL SINGLE FIELD GATE, 3.6 m WIDE (REFER TO MCHW, VOLUME 3, SERIES H DRAWING H17)
- TIMBER WICKET GATE TYPE 1, 1.2 m WIDE (REFER TO MCHW, VOLUME 3, SERIES H DRAWING H23)



SCALE 1:500 @ A1; 1:1000 @ A3

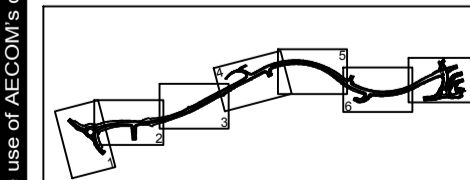
STATUS

PLANNING SUBMISSION ISSUE

ISSUE/REVISION

IR	DATE	DESCRIPTION
B	23-05-17	FENCING EXTENTS UPDATED
A	27-03-17	PLANNING SUBMISSION ISSUE

KEY PLAN



PROJECT NUMBER

60509148

SHEET TITLE

ST.ATHAN
FENCING
SHEET 3 OF 7

SHEET NUMBER

60509148-SHT-30-0000-CT-0303

This drawing has been prepared for the use of AECOM client. It may not be used, modified, reproduced or relied upon by third parties, except as agreed by AECOM or as required by law. AECOM accepts no responsibility, and denies any liability, whatsoever to any party that uses or relies on this drawing without AECOM's express written consent. Do not scale this document. All measurements must be obtained from the stated dimensions.