



SAFETY, HEALTH AND ENVIRONMENTAL INFORMATION

In addition to the hazards/risks normally associated with the types of work detailed on this drawing, note the following specific residual risks (Reference shall also be made to the design hazard log).

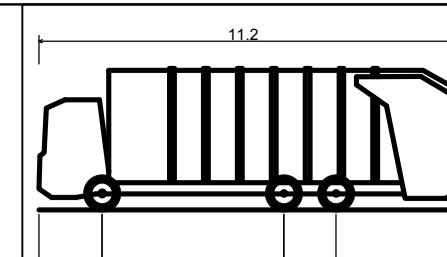
Construction
WORKING ADJACENT TO WATERCOURSE

NOTES

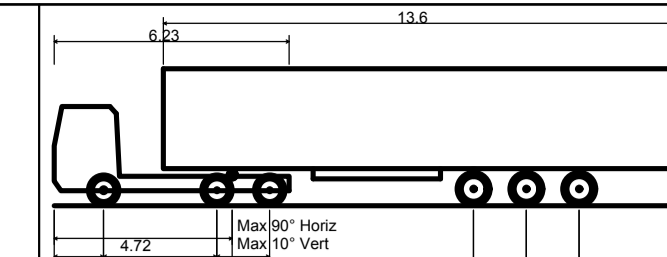
- ALL DIMENSIONS SHOWN ARE IN METRES UNLESS OTHERWISE SPECIFIED
- ONLY THE MOST ONEROUS VEHICLES IS SHOWN IN THE SWEEP PATH ANALYSIS
- SWEEP PATHS AROUND THE ROUNDABOUT CIRCULATORY HAVE BEEN OMITTED FOR CLARITY.
- TRACKING AT JUNCTIONS HAS BEEN UNDERTAKEN AT 5 Km/h
- VISIBILITY SPLAYS HAVE BEEN PRODUCED BASED ON THE REQUIREMENTS OF THE DMRB TD 42/95, TD 50/04 AND TD 16/07.

KEY

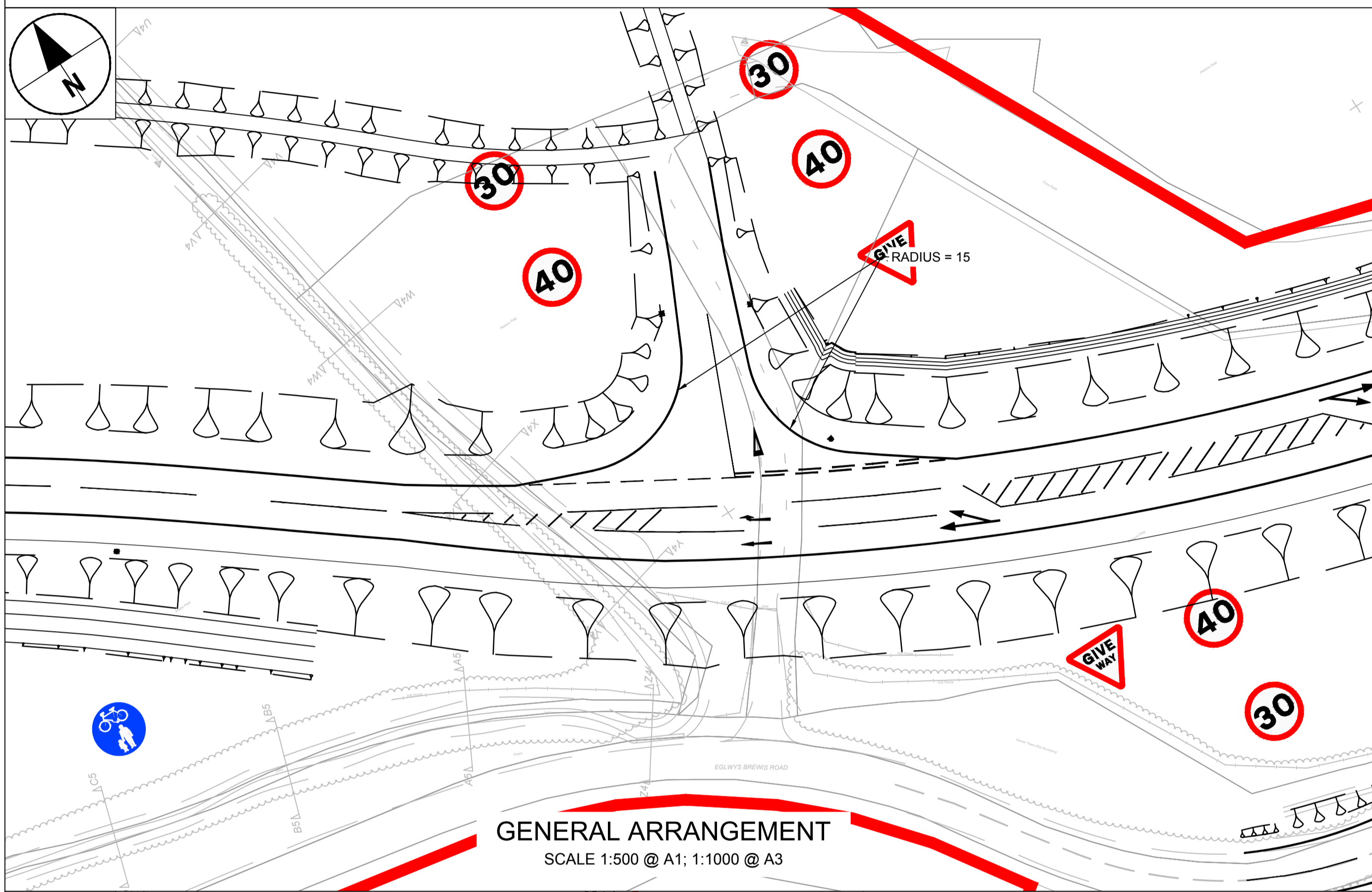
- PLANNING BOUNDARY
- VISIBILITY ENVELOPE
- PROPOSED KERB LINE
- ▲▲ ROAD SIGN
- PROPOSED BLISTER TACTILES 400mm x 400mm
- VEHICLE OUTLINE
- VEHICLE OVERHANG



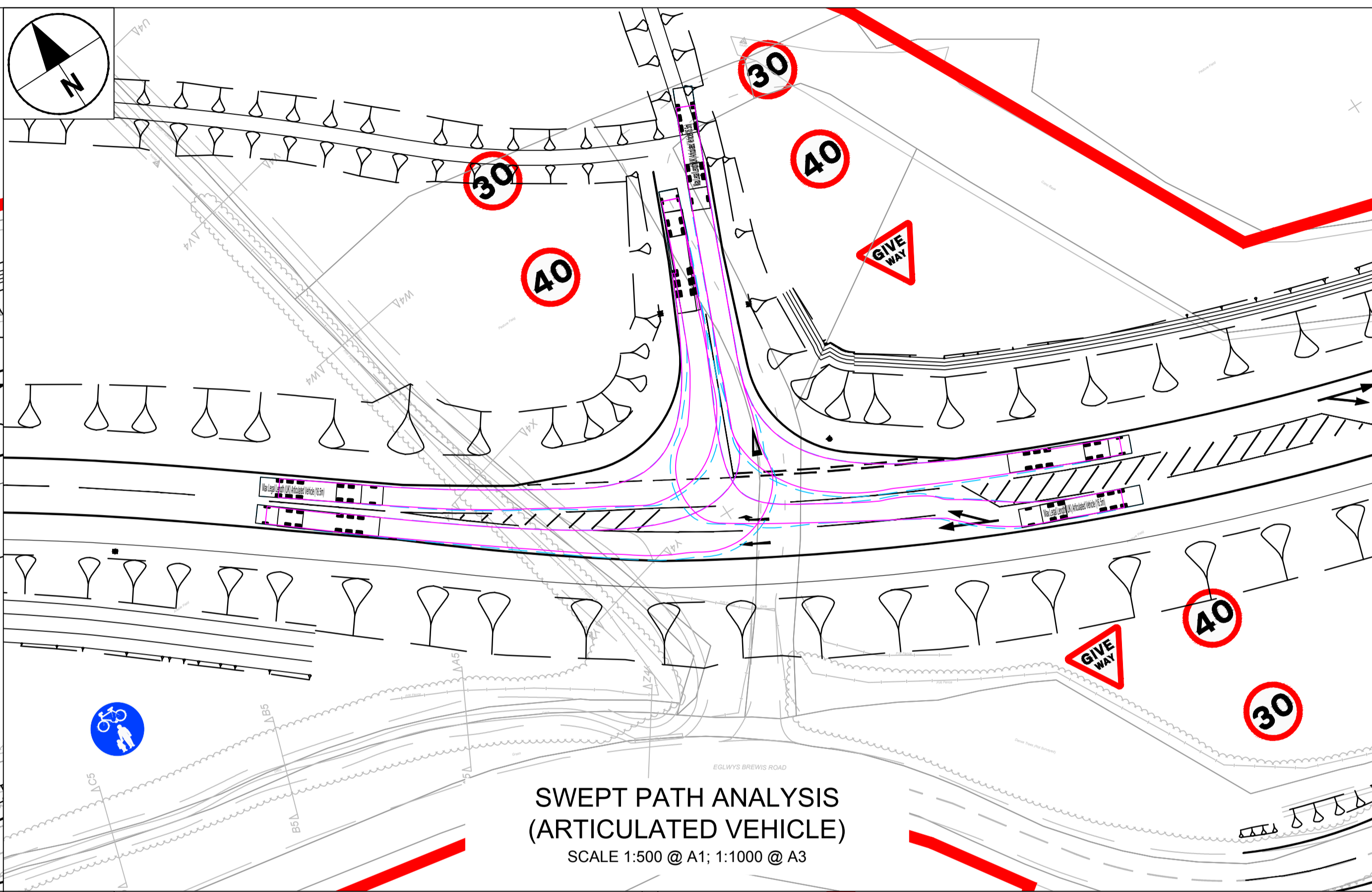
Phoenix 2 Duo (P2-15W with Elite 6x4 chassis)
Overall Length 11.200m
Overall Width 2.530m
Overall Body Height 3.751m
Min Body Ground Clearance 0.304m
Track Width 2.500m
Lock-to-lock time 4.00s
Curb to Curb Turning Radius 9.500m



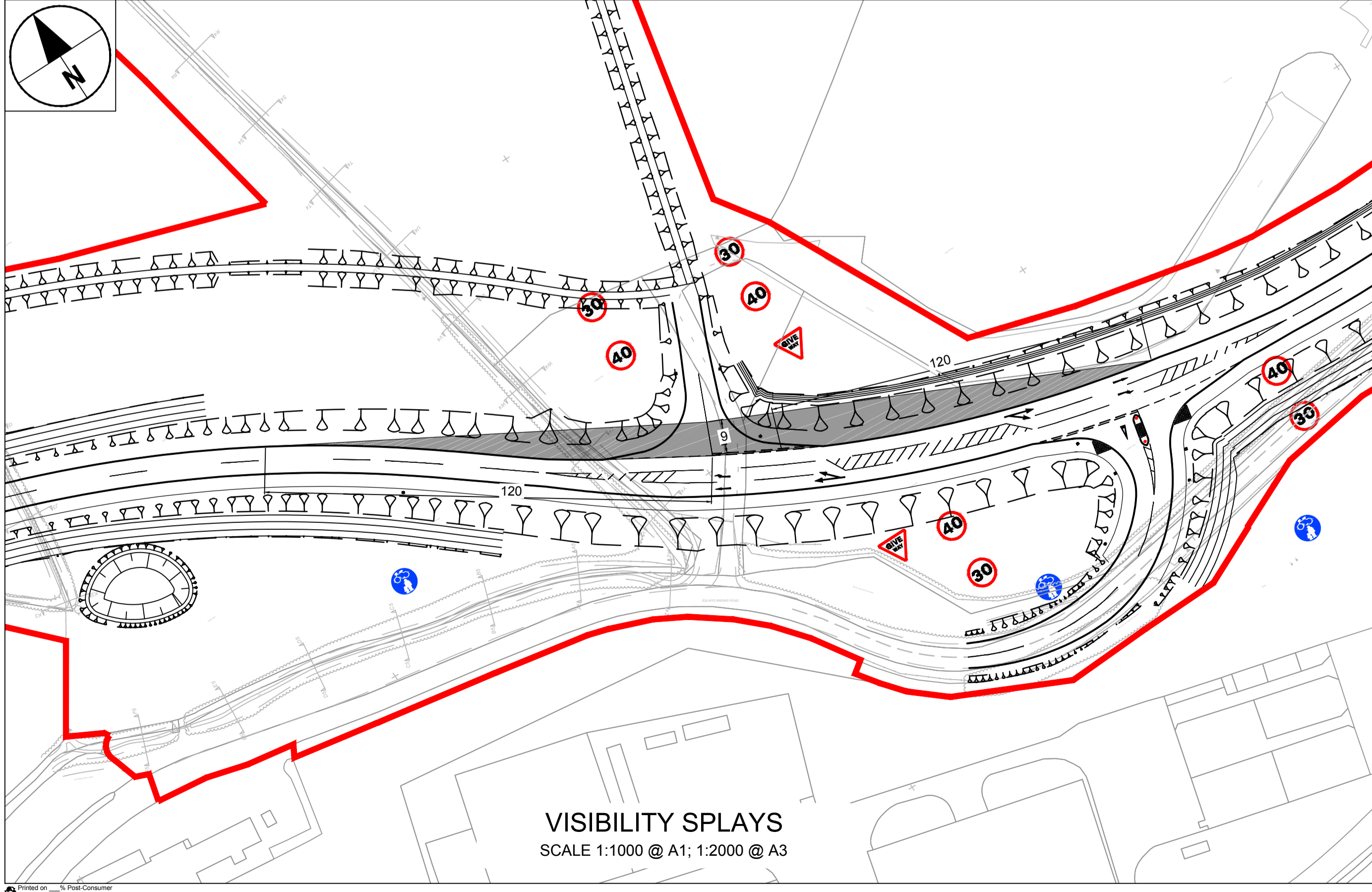
Max Legal Length (UK) 16.500m
Articulated Vehicle (16.5m)
Overall Length 16.500m
Overall Width 2.550m
Overall Body Height 3.632m
Min Body Ground Clearance 0.396m
Max Track Width 2.500m
Lock-to-lock time 6.00s
Curb to Curb Turning Radius 6.870m



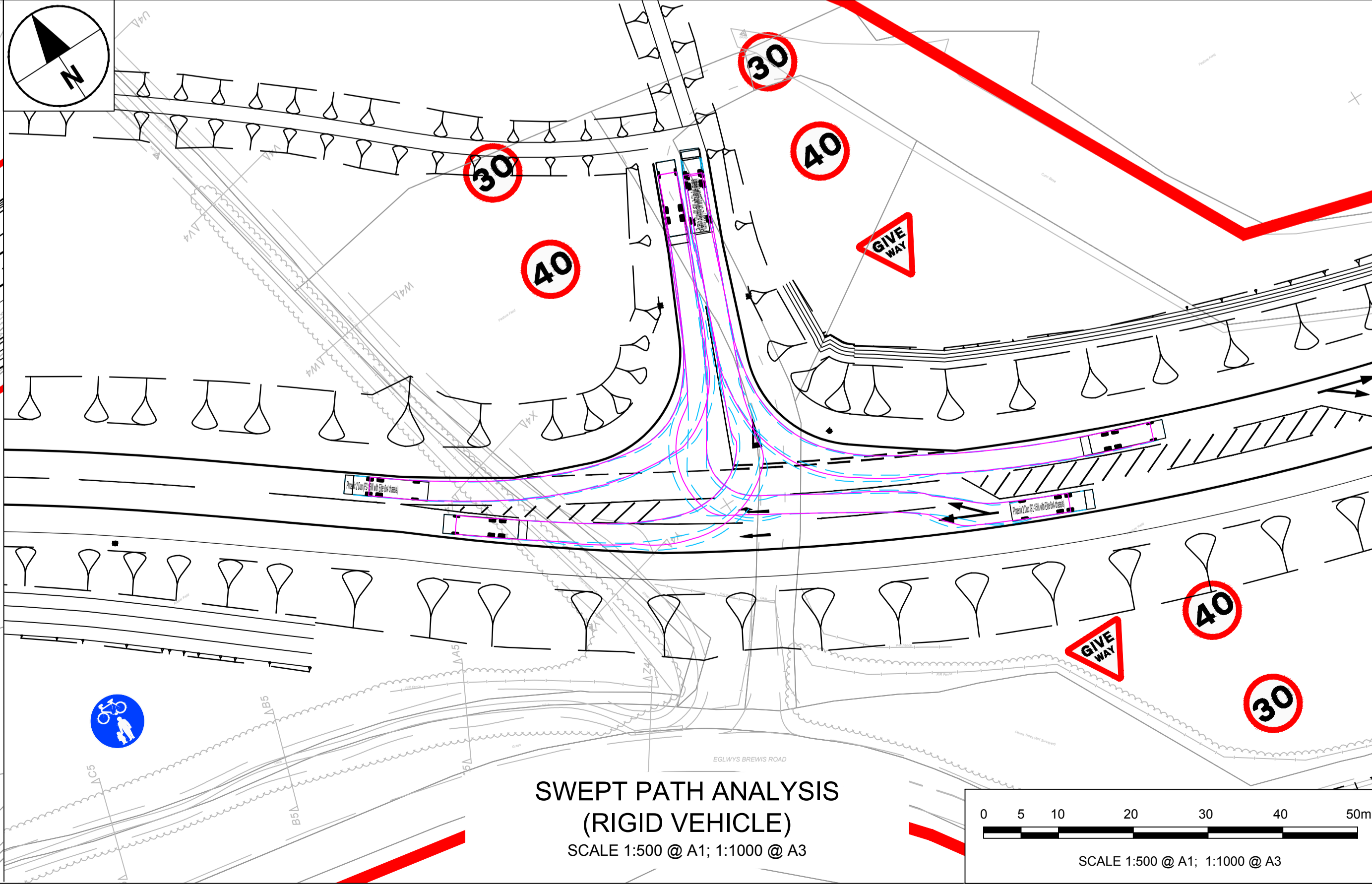
GENERAL ARRANGEMENT
SCALE 1:500 @ A1; 1:1000 @ A3



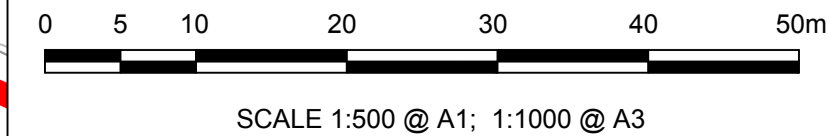
**SWEEP PATH ANALYSIS
(ARTICULATED VEHICLE)**
SCALE 1:500 @ A1; 1:1000 @ A3



VISIBILITY SPLAYS
SCALE 1:1000 @ A1; 1:2000 @ A3



**SWEEP PATH ANALYSIS
(RIGID VEHICLE)**
SCALE 1:500 @ A1; 1:1000 @ A3



SCALE 1:500 @ A1; 1:1000 @ A3

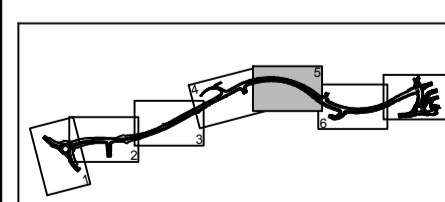
STATUS

PLANNING SUBMISSION ISSUE

ISSUE/REVISION

IR	DATE	DESCRIPTION
A	27-03-2017	PLANNING SUBMISSION ISSUE

KEY PLAN



PROJECT NUMBER

60509148

SHEET TITLE

ST.ATHAN
SWEEP PATH ANALYSIS & VISIBILITY SPLAYS
JUNCTION D

SHEET NUMBER

60509148-SHT-30-0000-CT-0155

ISO A1 594mm x 841mm Approved: RM Checked: TM Designer: RG Project Management Initials: Designer: RG Last Revised: 2017-03-24 File Name: F:\PROJECTS\HIGHWAYS - ST.ATHAN\BID\EXECUTING\DOCUMENTS\SUB CAD\01 WORKING\DRAWINGS\H50 - VISIBILITY SPLAYS\60509148-SHT-00-0000-CT-0155-1517.DWG. Last Saved by: SHORTEE. Last Printed: 2017-03-24. This drawing has been prepared for the use of AECOM's client. It may not be used, copied, reproduced or otherwise disseminated without the written consent of AECOM. AECOM accepts no responsibility, and denies any liability, whatsoever, to any party that uses or relies on this document, or any information contained therein, without AECOM's express written consent. Do not scale this document. All measurements must be obtained from the stated dimensions.