

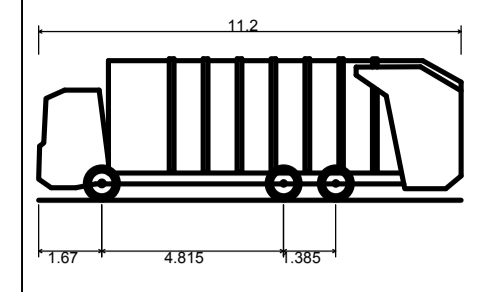
ISO A1 584mm x 841mm
Approved: RM
Checked: TM
Designer: RG
Project Management Initials:
File Name: F:\PROJECTS\HIGHWAYS - ST ATHAN\DESIGNING DOCUMENTS\308 CAD\01 WORKING DRAWINGS\150 - VISIBILITY SPLAYS\60509148-SHT-30-0000-CT-151-151.DWG
Last Saved by: SHORTEE
Last Printed: 2017-03-24

NOTES

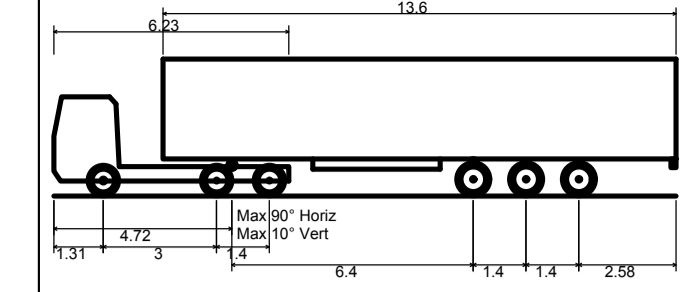
1. ALL DIMENSIONS SHOWN ARE IN METRES UNLESS OTHERWISE SPECIFIED
2. ONLY THE MOST ONEROUS VEHICLES IS SHOWN IN THE SWEEP PATH ANALYSIS
3. SWEEP PATHS AROUND THE ROUNDABOUT CIRCULATORY HAVE BEEN OMITTED FOR CLARITY.
4. TRACKING AT JUNCTIONS HAS BEEN UNDERTAKEN AT 5 Km/h
5. VISIBILITY SPLAYS HAVE BEEN PRODUCED BASED ON THE REQUIREMENTS OF THE DMRB TD 42/95, TD 50/04 AND TD 16/07.

KEY

- PLANNING BOUNDARY
- VISIBILITY ENVELOPE
- PROPOSED KERB LINE
- ▲▲ ROAD SIGN
- ▨ PROPOSED BLISTER TACTILES 400mm x 400mm
- VEHICLE OUTLINE
- VEHICLE OVERHANG



Phoenix 2 Duo (P2-15W with Elite 6x4 chassis)
 Overall Length 11.200m
 Overall Width 2.530m
 Overall Body Height 3.751m
 Min Body Ground Clearance 0.304m
 Track Width 2.500m
 Lock-to-lock time 4.00s
 Curb to Curb Turning Radius 9.500m



Max Legal Length (UK)
 Articulated Vehicle (16.5m)
 Overall Length 16.500m
 Overall Width 2.850m
 Overall Body Height 3.632m
 Overall Body Height 3.632m
 Min Body Ground Clearance 0.396m
 Max Track Width 2.500m
 Lock-to-lock time 6.00s
 Curb to Curb Turning Radius 6.870m



PROJECT
 ST. ATHAN
 NORTHERN
 ACCESS
 ROAD

CLIENT
 WELSH GOVERNMENT



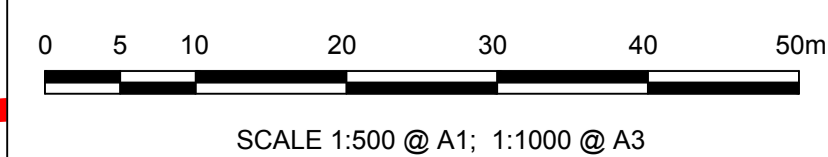
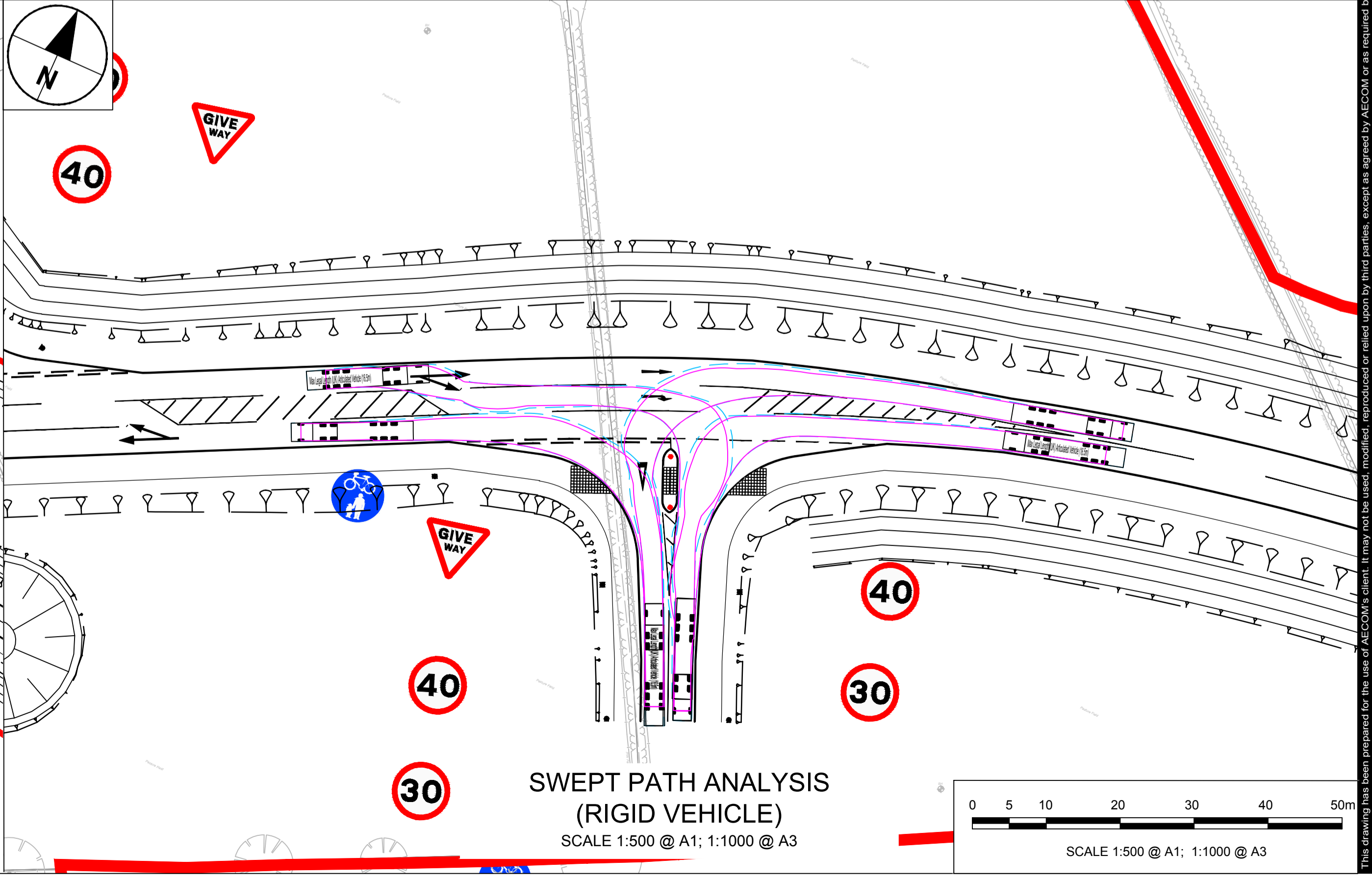
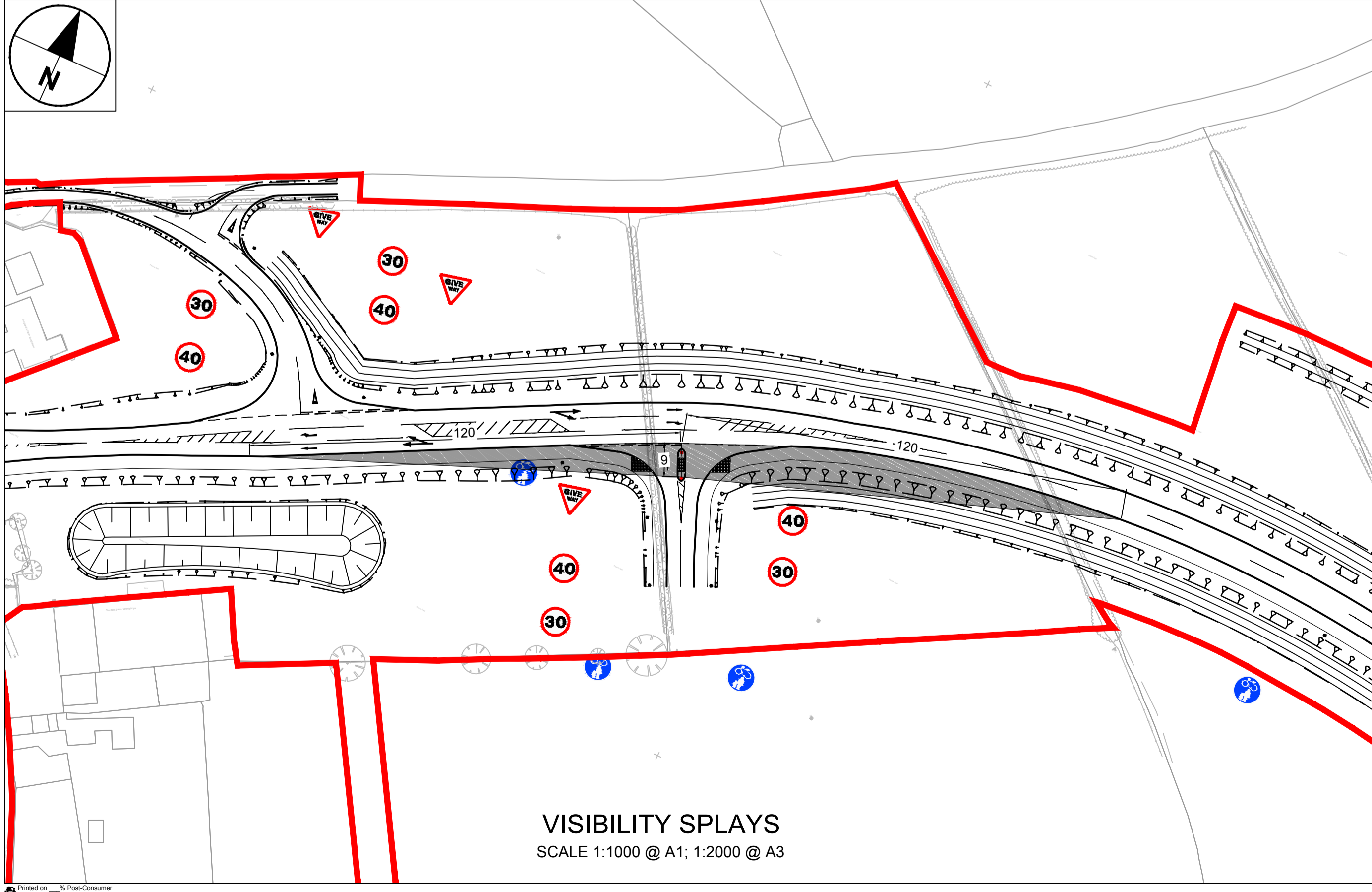
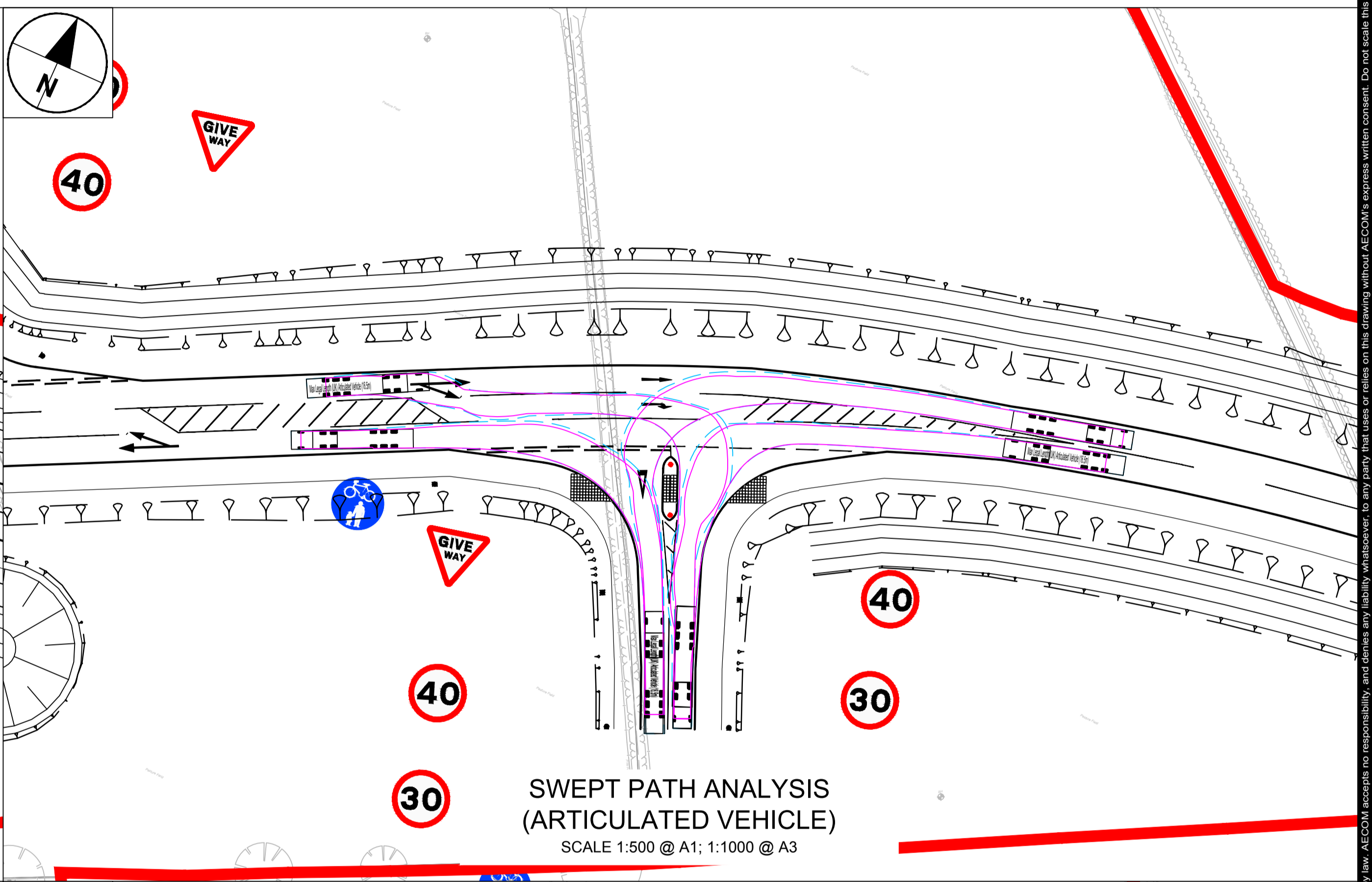
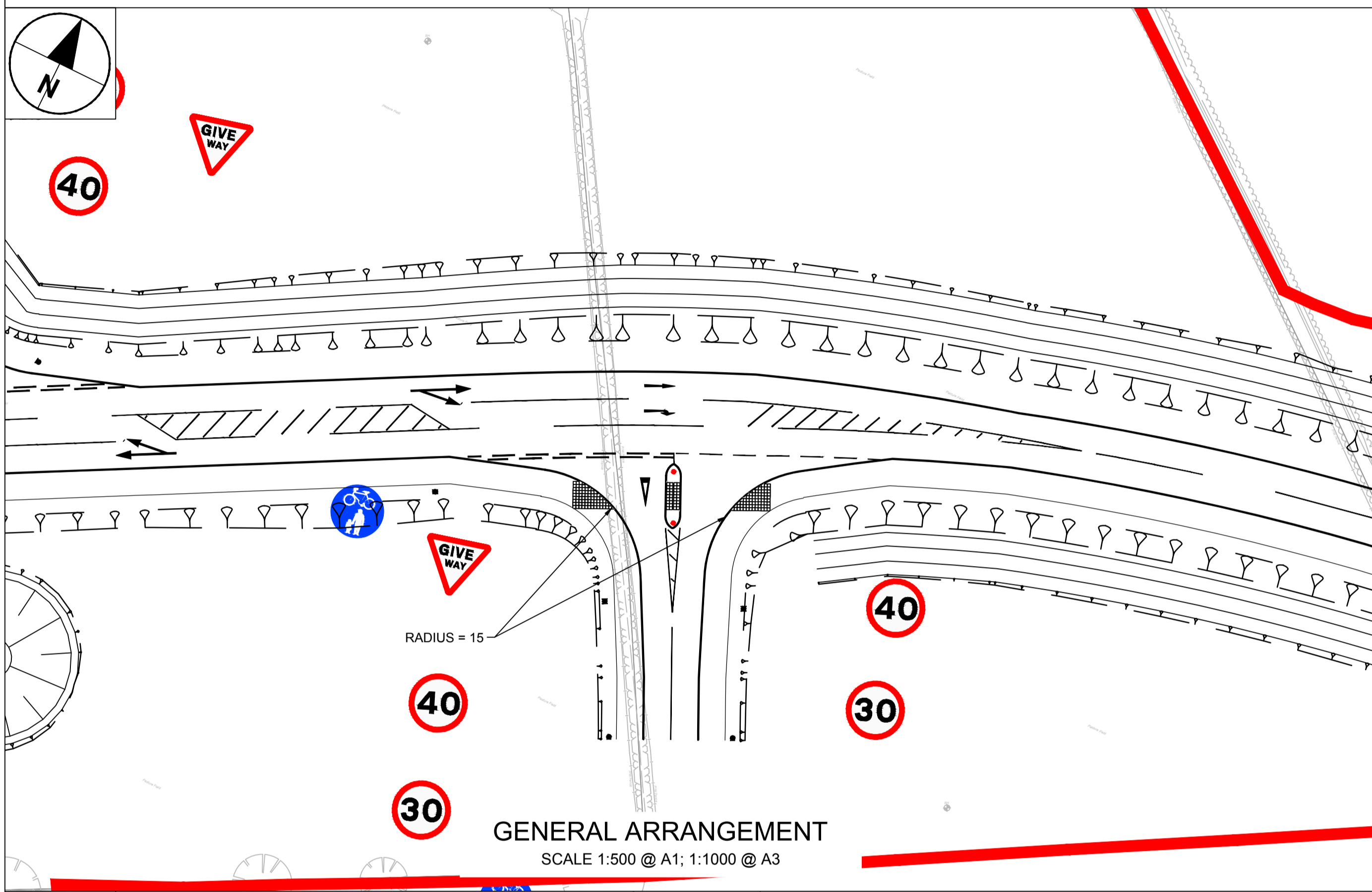
Llywodraeth Cymru
 Welsh Government

CONSULTANT
 AECOM
 1 CALLAGHAN SQUARE
 CARDIFF
 CF10 5BT
 TEL: (029) 20674600
 FAX: (029) 20674699

SAFETY, HEALTH AND ENVIRONMENTAL INFORMATION

In addition to the hazards/risks normally associated with the types of work detailed on this drawing, note the following specific residual risks (Reference shall also be made to the design hazard log).

Construction
WORKING ON AND ADJACENT TO LIVE CARRIAGEWAY
HIGH PERCENTAGE OF CARAVAN TRAILER TRAFFIC IN THIS AREA
OVERHEAD ELECTRICITY CABLES OVER CARRIAGEWAY



STATUS

PLANNING SUBMISSION ISSUE

ISSUE/REVISION

IR	DATE	DESCRIPTION
A	27-03-2017	PLANNING SUBMISSION ISSUE

KEY PLAN

PROJECT NUMBER
60509148

SHEET TITLE
ST. ATHAN
SWEPT PATH ANALYSIS & VISIBILITY SPLAYS
JUNCTION C SHEET 2 of 2

SHEET NUMBER
60509148-SHT-30-0000-CT-0154

This drawing has been prepared for the use of AECOM clients in accordance with the terms of the contract for services between AECOM and the client. AECOM accepts no responsibility for any errors or omissions in this drawing, and the client is advised to verify all dimensions and details shown on this drawing with the relevant authorities. AECOM is not responsible for any damage or loss of any kind arising from the use of this drawing.