



SAFETY, HEALTH AND ENVIRONMENTAL INFORMATION

In addition to the hazards/risks normally associated with the types of work detailed on this drawing, note the following specific residual risks (Reference shall also be made to the design hazard log).

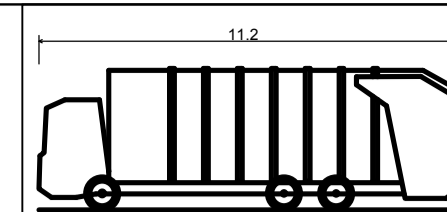
Construction
KNOWN BADGER PRESENCE IN AREA
WORKING ADJACENT TO WATERCOURSE
WORKING AT HEIGHT OVER FARMER ACCESS UNDERPASS AND LARGE DRAINAGE CULVERT
OVERHEAD ELECTRICITY CABLES OVER CARRIAGEWAY
LIVESTOCK IN ADJACENT LAND
DEEP CUTTING IN THIS AREA
STABILITY OF GROUND COULD BE AFFECTED

NOTES

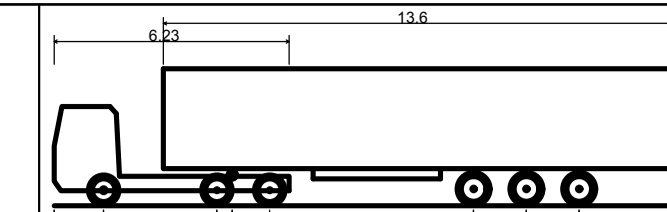
1. ALL DIMENSIONS SHOWN ARE IN METRES UNLESS OTHERWISE SPECIFIED
2. ONLY THE MOST ONEROUS VEHICLES IS SHOWN IN THE SWEEP PATH ANALYSIS
3. SWEEP PATHS AROUND THE ROUNDABOUT CIRCULATORY HAVE BEEN OMITTED FOR CLARITY.
4. TRACKING AT JUNCTIONS HAS BEEN UNDERTAKEN AT 5 Km/h
5. VISIBILITY SPLAYS HAVE BEEN PRODUCED BASED ON THE REQUIREMENTS OF THE DMRB TD 42/95, TD 50/04 AND TD 16/07.

KEY

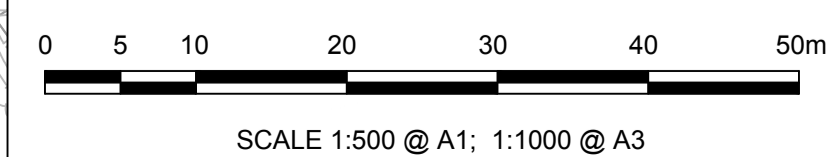
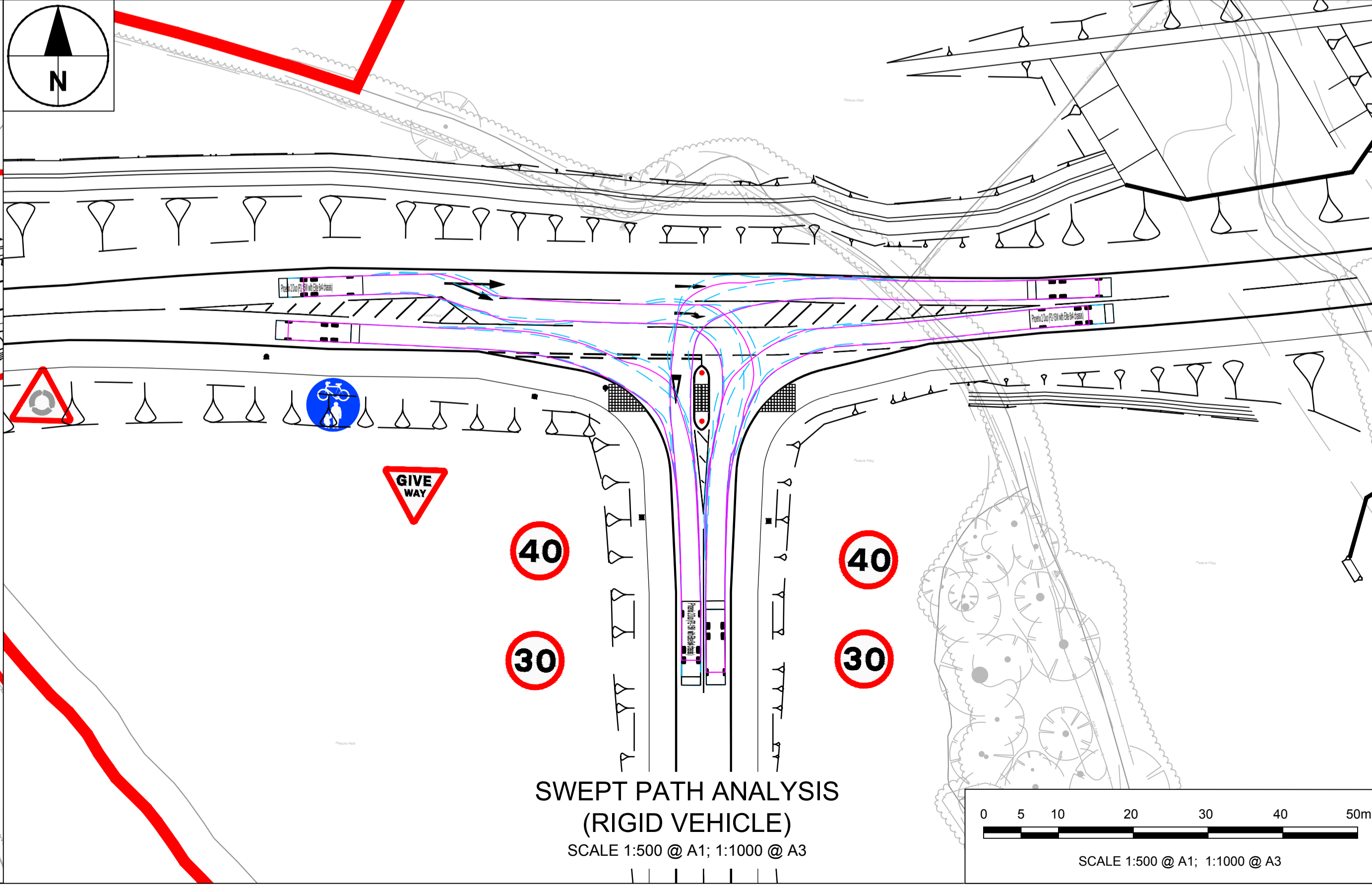
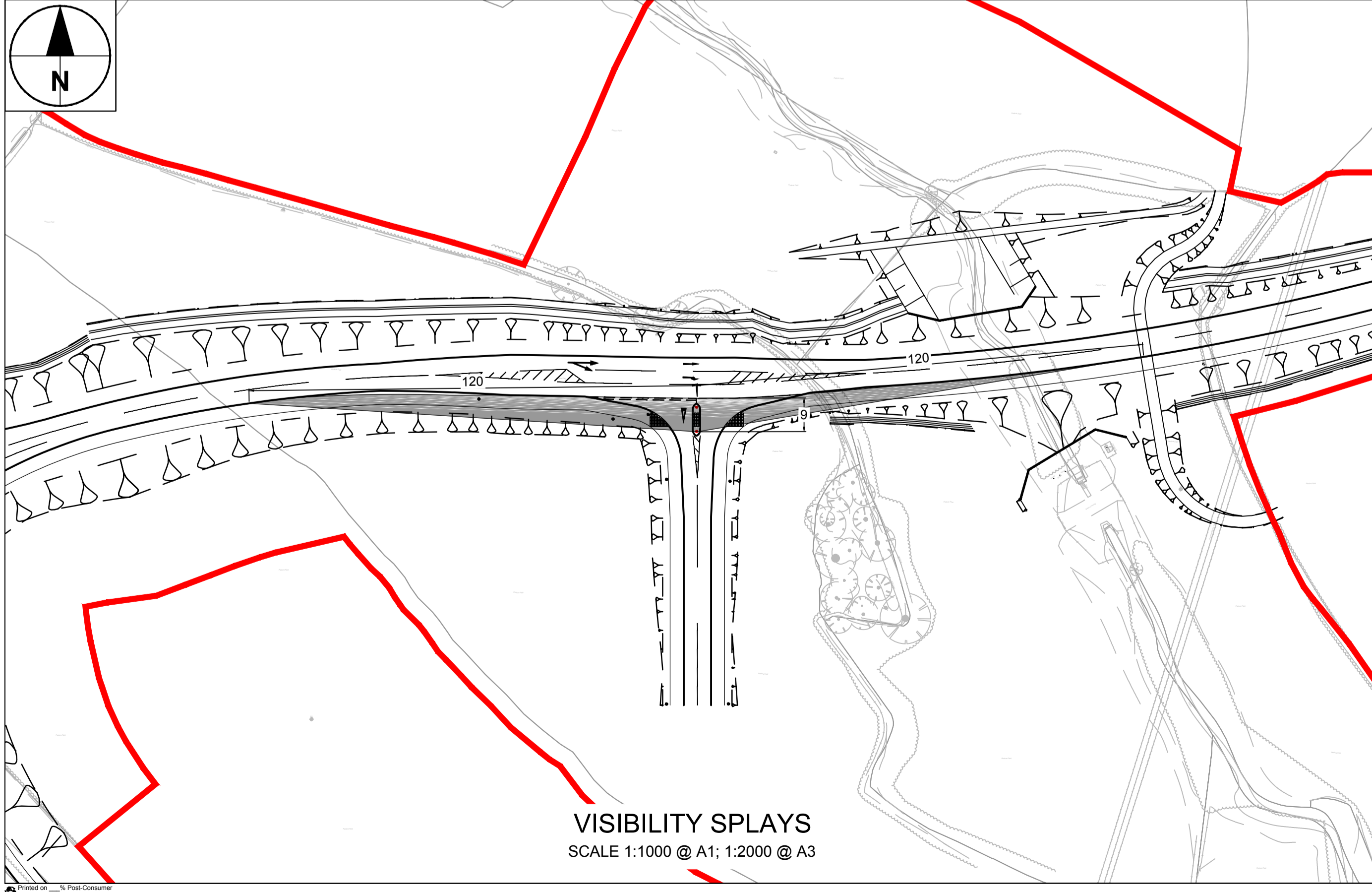
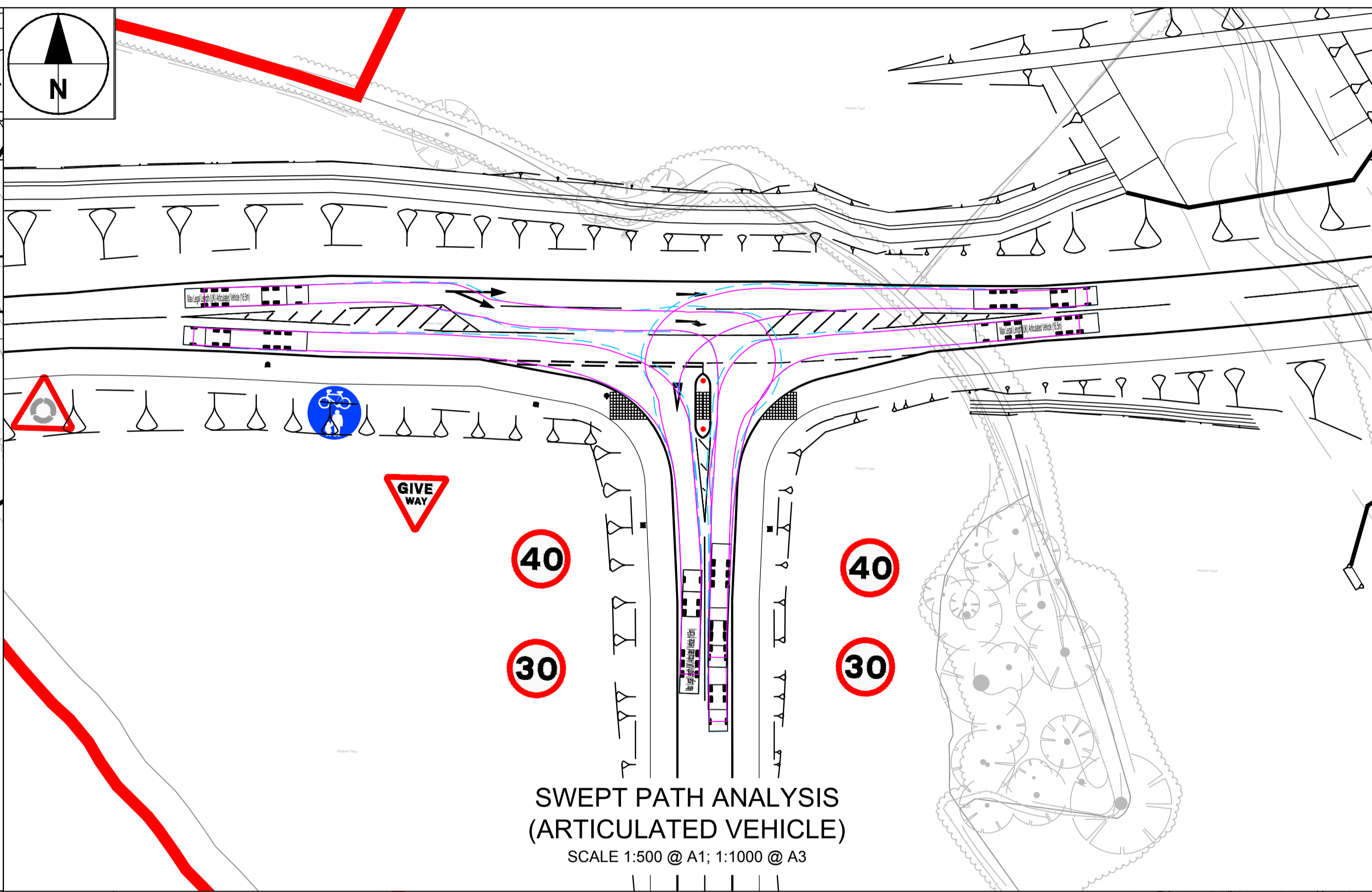
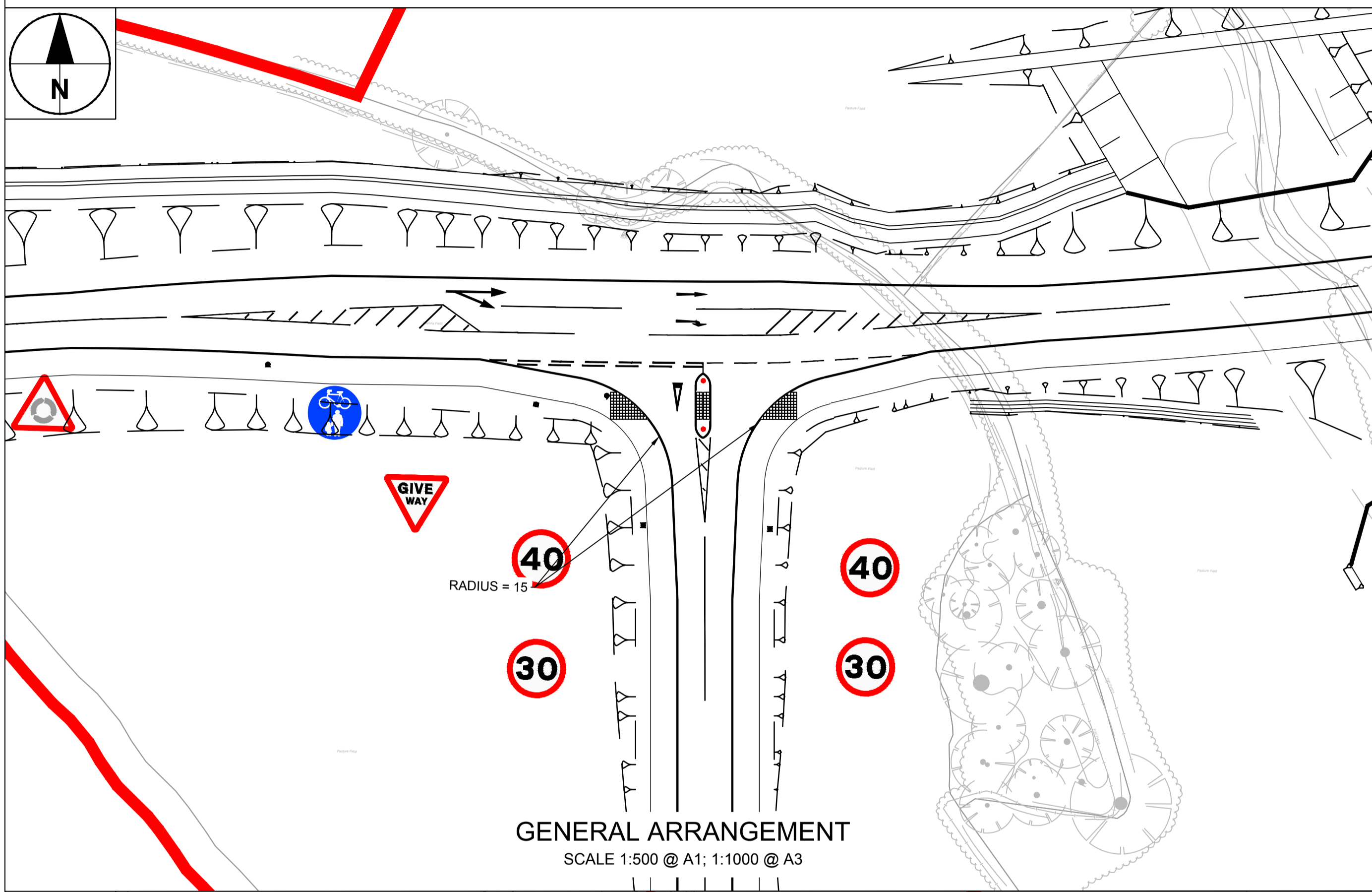
- PLANNING BOUNDARY
- VISIBILITY ENVELOPE
- PROPOSED KERB LINE
- ▲▲ ROAD SIGN
- ▨ PROPOSED BLISTER TACTILES 400mm x 400mm
- VEHICLE OUTLINE
- VEHICLE OVERHANG



Phoenix 2 Duo (P2-15W with Elite 6x4 chassis)
 Overall Length 11.200m
 Overall Width 2.530m
 Overall Body Height 3.751m
 Min Body Ground Clearance 0.304m
 Track Width 2.500m
 Lock-to-lock time 4.00s
 Curb to Curb Turning Radius 9.500m



Max Legal Length (UK) 16.500m
 Articulated Vehicle (16.5m) Overall Length 16.500m
 Overall Width 2.550m
 Overall Body Height 3.632m
 Min Body Ground Clearance 0.396m
 Max Track Width 2.500m
 Lock-to-lock time 6.00s
 Curb to Curb Turning Radius 6.870m



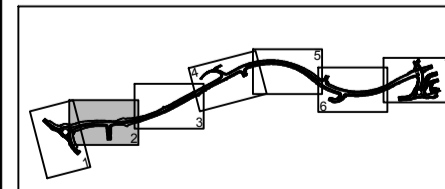
STATUS

PLANNING SUBMISSION ISSUE

ISSUE/REVISION

IR	DATE	DESCRIPTION
A	27-03-2017	PLANNING SUBMISSION ISSUE

KEY PLAN



PROJECT NUMBER

60509148

SHEET TITLE

ST. ATHAN
SWEPT PATH ANALYSIS & VISIBILITY SPLAYS
JUNCTION B

SHEET NUMBER

60509148-SHT-30-0000-CT-0152

ISO A1 594mm x 841mm
 Approved: RM
 Checked: TM
 Designer: RG
 Project Management Initials:
 File Name: F:\PROJECTS\HIGHWAYS - ST.ATHAN\B EXECUTING DOCUMENTS\CAD\01 WORKING DRAWINGS\150 - VISIBILITY SPLAYS\60509148-SHT-30-0000-CT-0152.DWG
 Last Saved by: SHORTEE
 Last Printed: 2017-03-24
 Printed on: 100% Recycled Content Paper

This drawing has been prepared for the use of AECOM's client. It may not be used, modified, reproduced or relied upon by third parties, except as agreed by AECOM or as required by law. AECOM accepts no responsibility, and denies any liability whatsoever, to any party that uses or relies on this drawing without AECOM's express written consent. Do not scale this document. All measurements must be obtained from the stated dimensions.