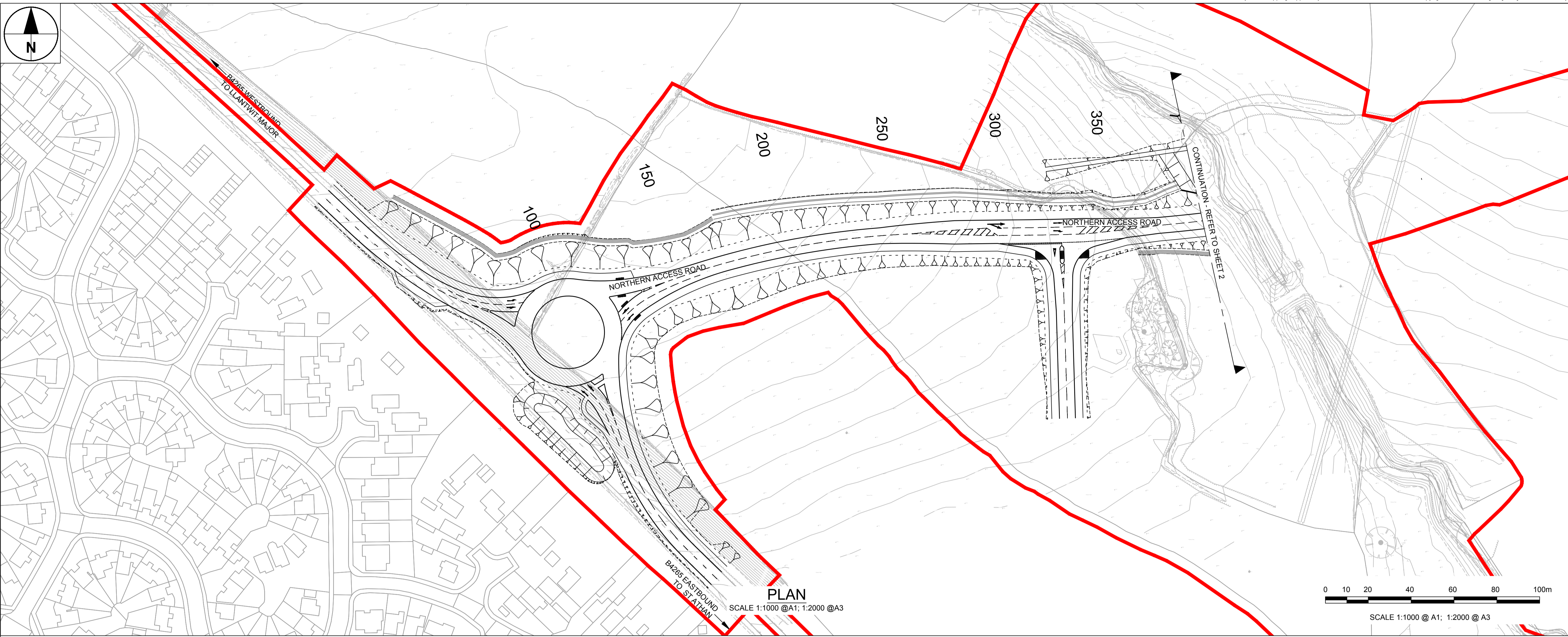
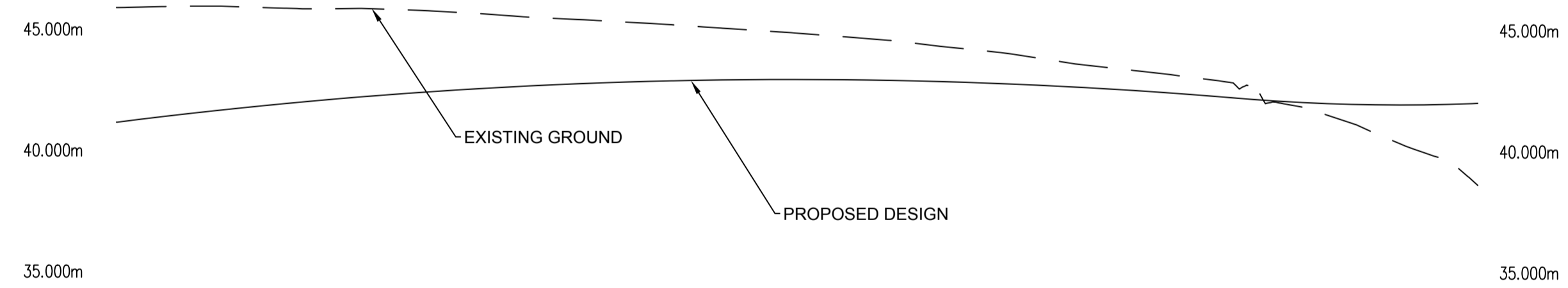




SAFETY, HEALTH AND ENVIRONMENTAL INFORMATION
In addition to the hazards/risks normally associated with the types of work detailed on this drawing, note the following specific residual risks (Reference shall also be made to the design hazard log).
Construction
WORKING ON AND ADJACENT TO LIVE CARRIAGEWAY
LIVESTOCK IN ADJACENT LAND
DEEP CUTTING IN THIS AREA, STABILITY OF GROUND COULD BE AFFECTED



ISO A1 84mm x 84mm
 Project Management Initials: Designer: RG Checked: RM Approved: RM
 File name: \\ELU\AECOM\NET\COM\PROJECT\VOL\KOD\F1\FPROJECTS\HIGHWAYS - ST.ATHAN\3 EXECUTION\3 DOCUMENTS\8 CAD\01 WORKING\DRAWINGS\0600 - EARTHWORKS\60509148-SHT-30-0000-CT-0601_005.DWG Last saved by: BENBRIDGEB Last Plotted: 2017-09-14
 Printed on: % Print Consumer Recycled Content Paper



Level Datum = 31.000

STATION	DESIGN LEVELS	GRADIENT	EXISTING LEVELS	HORIZONTAL GEOMETRY	CHAINAGE	VERTICAL GEOMETRY	EX LEVEL DIFF.	Superelevation
130,000	41.113	-2.682	45.871		130,000		-4.633	
140,000	41.472	2.351	45.309		140,000		-4.437	
150,000	41.689	2.189	45.584		150,000		-4.194	
160,000	41.868	1.987	45.822		160,000		-3.934	
170,000	42.068	1.806	45.803		170,000		-3.734	
180,000	42.231	1.624	45.785		180,000		-3.555	
190,000	42.375	1.442	45.708		190,000		-3.334	
200,000	42.501	1.260	45.600		200,000		-3.100	
210,000	42.609	1.078	45.456		210,000		-2.847	
220,000	42.698	0.897	45.359		220,000		-2.660	
230,000	42.770	0.715	45.250		230,000		-2.481	
240,000	42.823	0.533	45.135		240,000		-2.311	
250,000	42.858	0.351	44.998		250,000		-2.140	
260,000	42.875	0.169	44.849		260,000		-1.993	
270,000	42.874	-0.013	44.724		270,000		-1.851	
280,000	42.855	-0.194	44.587		280,000		-1.715	
290,000	42.817	-0.376	44.371		290,000		-1.554	
300,000	42.761	-0.558	44.150		300,000		-1.388	
310,000	42.687	-0.740	43.927		310,000		-1.239	
320,000	42.595	-0.922	43.694		320,000		-1.100	
330,000	42.485	-1.103	43.363		330,000		-0.878	
340,000	42.356	-1.285	43.119		340,000		-0.783	
350,000	42.209	-1.467	42.888		350,000		-0.678	
360,000	42.049	-1.649	42.662		360,000		-0.633	
370,000	41.923	-1.831	42.351		370,000		0.193	
380,000	41.846	-0.752	41.074		380,000		0.775	
390,000	41.823	-0.232	40.227		390,000		1.595	
400,000	41.848	0.248	39.554		400,000		2.294	

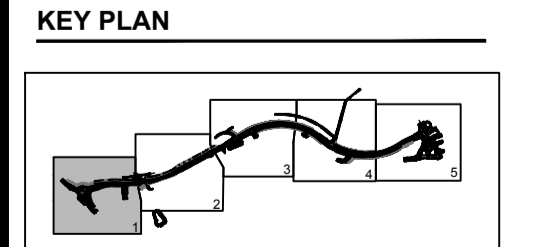
LONG SECTION
SCALE H = 1:1000; V = 1:200 @ A1

STATUS

PLANNING SUBMISSION ISSUE

ISSUE/REVISION

IR	DATE	DESCRIPTION
A	27-01-2017	PLANNING SUBMISSION ISSUE



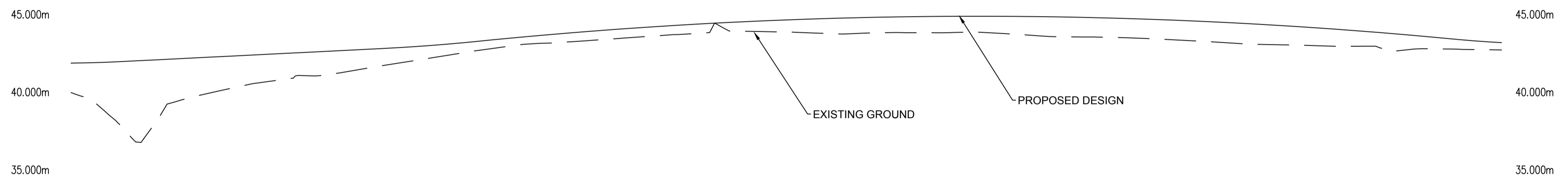
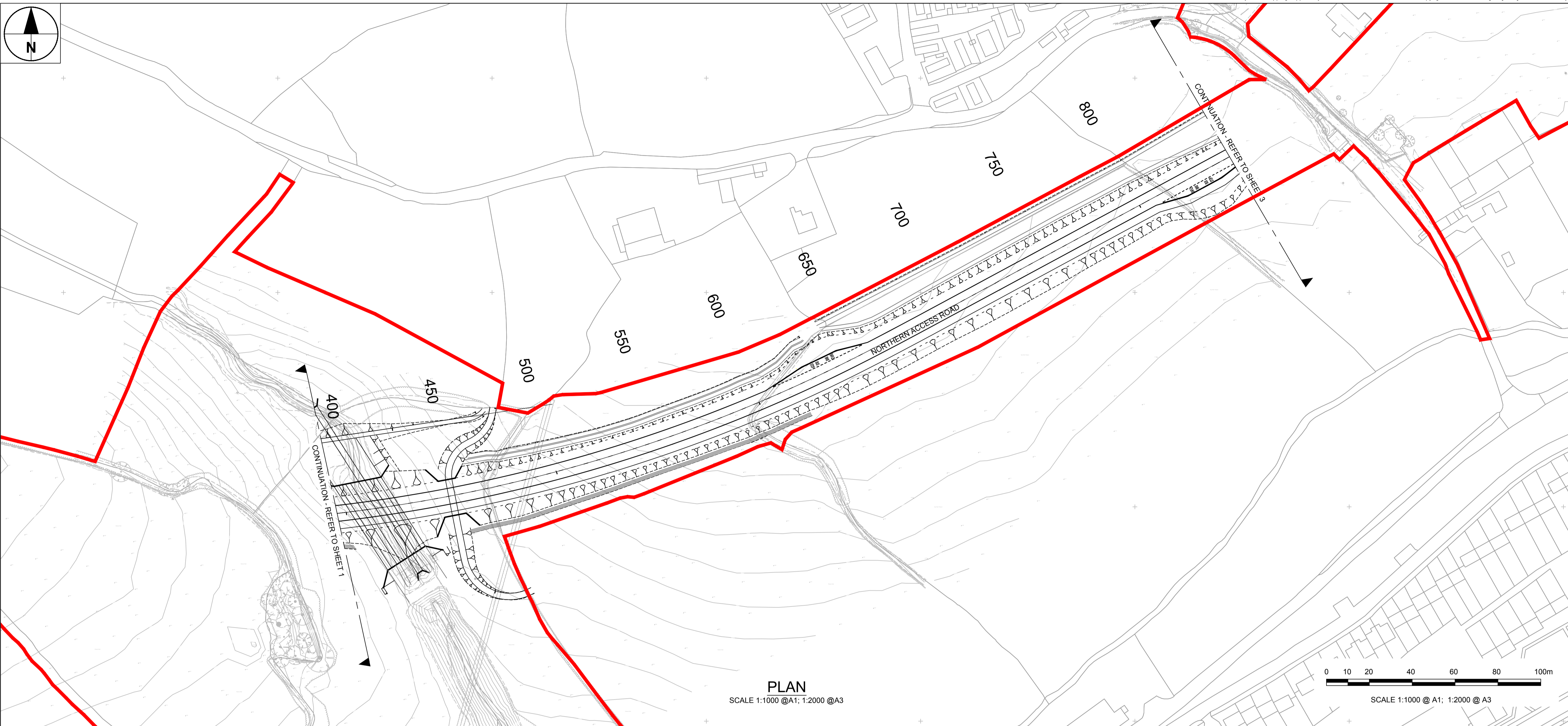
PROJECT NUMBER
60509148

SHEET TITLE
ST.ATHAN
PLAN AND PROFILE
SHEET 1 OF 5

SHEET NUMBER
60509148-SHT-30-0000-CT-0601



SAFETY, HEALTH AND ENVIRONMENTAL INFORMATION	
In addition to the hazards/risks normally associated with the types of work detailed on this drawing, note the following specific residual risks (Reference shall also be made to the design hazard log).	
Construction	
OVERHEAD ELECTRICITY CABLES	
WORKING ADJACENT TO WATERCOURSE	
WORKING AT HEIGHT OVER FARMER ACCESS UNDERPASS AND LARGE DRAINAGE CULVERT	
OVERHEAD ELECTRICITY CABLES OVER CARRIAGEWAY	
LIVESTOCK IN ADJACENT LAND	
KNOWN BADGER PRESENCE IN AREA	



Level Datum = 31.000

DESIGN LEVELS	GRADIENT	EXISTING LEVELS	HORIZONTAL GEOMETRY	CHAINAGE	VERTICAL GEOMETRY	EX LEVEL DIFF.	Superelevation
41.848	0.248	39.554		400.000	R=2000.000m L=43.537m	2.294	
41.922	0.146	37.795		410.000	G=0.026%	4.127	
42.022	1.000	37.077		420.000	S=1.000 L=83.94m	4.346	
42.122	1.000	39.479		430.000		2.643	
42.222	1.000	39.862		440.000		2.261	
42.322	1.000	40.399		450.000		1.924	
42.422	1.000	40.712		460.000		1.711	
42.522	1.000	41.012		470.000		1.511	
42.622	1.000	41.182		480.000		1.441	
42.722	1.000	41.522		490.000		1.200	
42.828	1.060	41.846		500.000		0.983	
42.965	1.367	42.164		510.000		0.802	
43.115	1.700	42.483		520.000		0.653	
43.331	1.962	42.778		530.000		0.553	
43.519	1.881	43.040		540.000		0.479	
43.695	1.756	43.136		550.000		0.558	
43.858	1.631	43.271		560.000		0.587	
44.009	1.506	43.407		570.000		0.601	
44.147	1.381	43.545		580.000		0.601	
44.272	1.256	43.674		590.000		0.599	
44.385	1.131	43.896		600.000		0.589	
44.486	1.006	43.877		610.000		0.608	
44.574	0.881	43.843		620.000		0.731	
44.650	0.756	43.786		630.000		0.864	
44.713	0.631	43.713		640.000		0.989	
44.763	0.506	43.761		650.000		1.002	
44.801	0.381	43.793		660.000		1.009	
44.827	0.256	43.780		670.000		1.046	
44.840	0.131	43.806		680.000		1.033	
44.840	0.006	43.772		690.000		1.069	
44.829	-0.119	43.659		700.000		1.159	
44.804	-0.244	43.531		710.000		1.273	
44.767	-0.369	43.506		720.000		1.261	
44.718	-0.494	43.475		730.000		1.243	
44.656	-0.619	43.468		740.000		1.247	
44.581	-0.744	43.332		750.000		1.259	
44.494	-0.869	43.207		760.000		1.288	
44.395	-0.994	43.083		770.000		1.312	
44.283	-1.119	43.018		780.000		1.296	
44.159	-1.244	42.976		790.000		1.182	
44.022	-1.369	42.915		800.000		1.107	
43.872	-1.494	42.813		810.000		0.960	
43.710	-1.619	42.600		820.000		1.111	
43.536	-1.744	42.750		830.000		0.787	
43.350	-1.860	42.721		840.000		0.629	
43.193	-1.974	42.684		850.000		0.508	

LONG SECTION
SCALE H = 1:1000; V = 1:200 @ A1

STATUS
PLANNING SUBMISSION ISSUE

ISSUE/REVISION	

KEY PLAN	
A	27-01-2017 PLANNING SUBMISSION ISSUE
IR	DATE DESCRIPTION

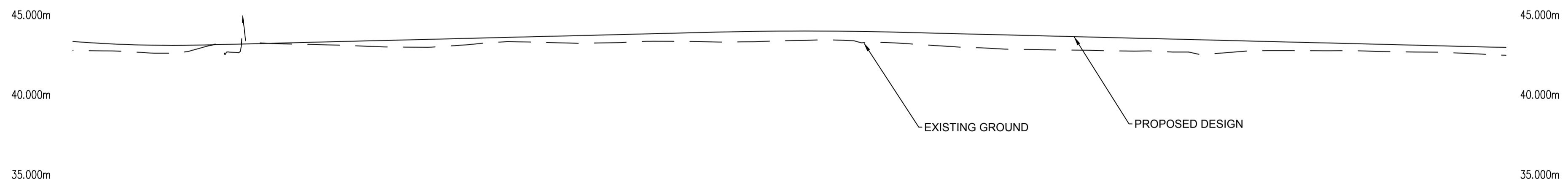
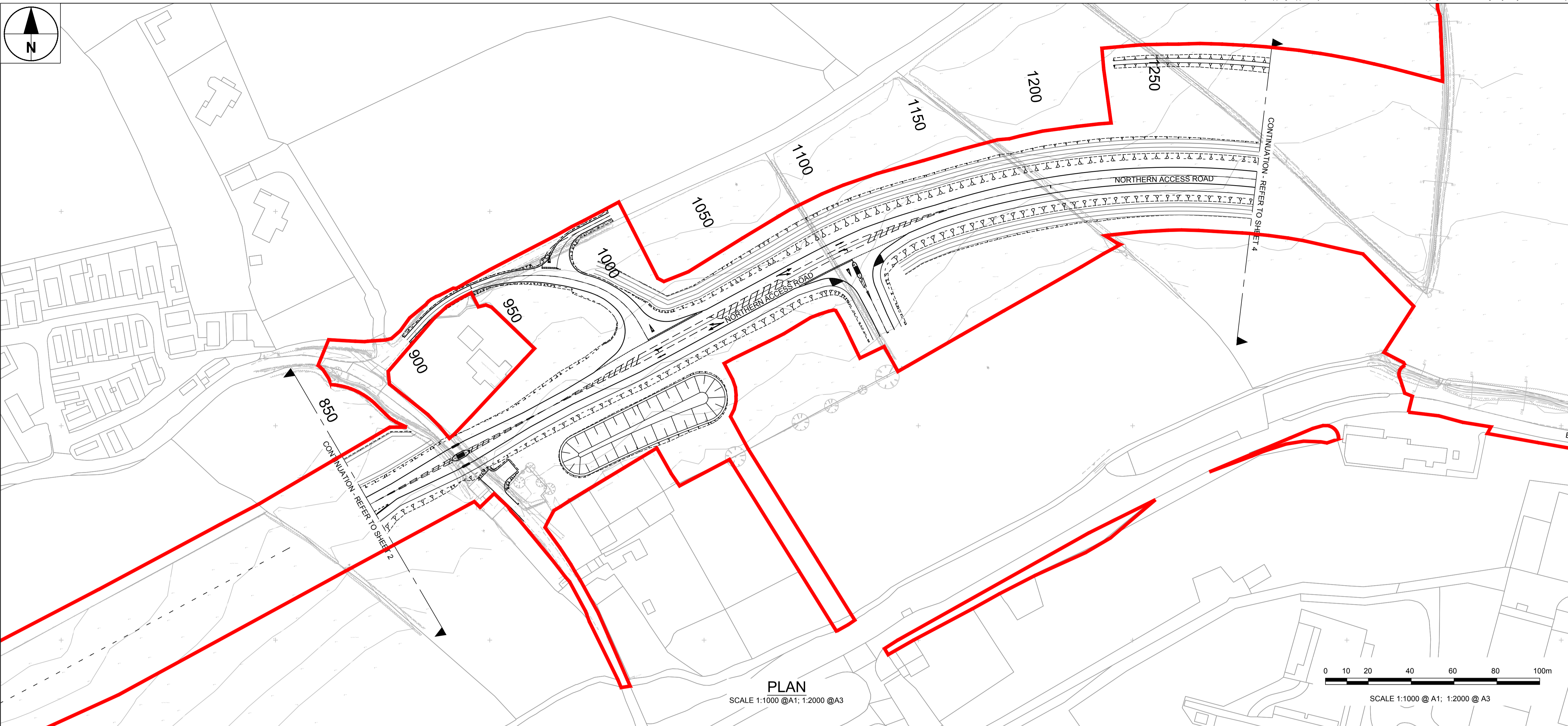
PROJECT NUMBER
60509148

SHEET TITLE
ST.ATHAN
PLAN AND PROFILE
SHEET 2 OF 5

SHEET NUMBER
60509148-SHT-30-0000-CT-0602



SAFETY, HEALTH AND ENVIRONMENTAL INFORMATION	
In addition to the hazards/risks normally associated with the types of work detailed on this drawing, note the following specific residual risks (Reference shall also be made to the design hazard log).	
Construction	
WORKING ON AND ADJACENT TO LIVE CARRIAGEWAY	
HIGH PERCENTAGE OF CARAVAN TRAILER TRAFFIC IN THIS AREA	
OVERHEAD ELECTRICITY CABLES OVER CARRIAGEWAY	
WORKING ADJACENT TO WATERCOURSE	

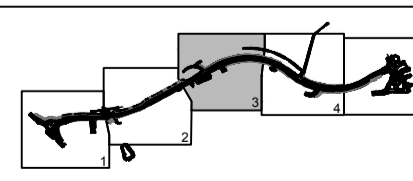


Level Datum = 31.000

DESIGN LEVELS	GRADIENT	EXISTING LEVELS	HORIZONTAL GEOMETRY	CHAINAGE	VERTICAL GEOMETRY	EX LEVEL DIFF.	Superelevation
43.193	-1.574	42.684	STRAIGHT (L=368.867m)	850.000	R=2000.000m L=48.203m	0.508	RIS & US=2.5%
43.095	-1.074	42.653		860.000			
43.028	-0.574	42.533	R=1000.000m L=96.406m	870.000	R=1000.000m L=96.406m	0.494	US=2.5%
43.021	-0.074	42.565		880.000			
43.060	0.395	43.099	R=1000.000m L=96.406m	890.000	R=1000.000m L=96.406m	-0.039	US=2.5%
43.110	0.500	43.215		900.000			
43.160	0.500	43.119	R=1000.000m L=96.406m	910.000	R=1000.000m L=96.406m	0.042	US=2.5%
43.210	0.500	43.074		920.000			
43.260	0.500	42.022	R=1000.000m L=96.406m	930.000	R=1000.000m L=96.406m	0.238	US=2.5%
43.310	0.500	42.942		940.000			
43.360	0.500	42.807	R=1000.000m L=96.406m	950.000	R=1000.000m L=96.406m	0.454	US=2.5%
43.410	0.500	42.836		960.000			
43.460	0.500	43.071	R=1000.000m L=96.406m	970.000	R=1000.000m L=96.406m	0.389	US=2.5%
43.510	0.500	43.233		980.000			
43.560	0.500	43.221	R=1000.000m L=96.406m	990.000	R=1000.000m L=96.406m	0.339	US=2.5%
43.610	0.500	43.168		1000.000			
43.660	0.500	43.166	R=1000.000m L=96.406m	1010.000	R=1000.000m L=96.406m	0.494	US=2.5%
43.710	0.500	43.219		1020.000			
43.760	0.500	43.274	R=1000.000m L=96.406m	1030.000	R=1000.000m L=96.406m	0.486	US=2.5%
43.810	0.500	43.255		1040.000			
43.860	0.495	43.224	R=1000.000m L=96.406m	1050.000	R=1000.000m L=96.406m	0.636	US=2.5%
43.910	0.357	43.251		1060.000			
43.915	0.185	43.317	R=1000.000m L=96.406m	1070.000	R=1000.000m L=96.406m	0.596	US=2.5%
43.915	0.000	43.363		1080.000			
43.897	-0.179	43.310	R=1000.000m L=96.406m	1090.000	R=1000.000m L=96.406m	0.587	US=2.5%
43.861	-0.360	43.199		1100.000			
43.812	-0.763	43.033	R=1000.000m L=96.406m	1110.000	R=1000.000m L=96.406m	0.728	US=2.5%
43.762	-0.500	42.954		1120.000			
43.712	-0.500	42.867	R=1000.000m L=96.406m	1130.000	R=1000.000m L=96.406m	0.845	US=2.5%
43.662	-0.500	42.771		1140.000			
43.612	-0.500	42.742	R=1000.000m L=96.406m	1150.000	R=1000.000m L=96.406m	0.869	US=2.5%
43.562	-0.500	42.719		1160.000			
43.512	-0.500	42.683	R=1000.000m L=96.406m	1170.000	R=1000.000m L=96.406m	0.832	US=2.5%
43.462	-0.500	42.668		1180.000			
43.412	-0.500	42.687	R=1000.000m L=96.406m	1190.000	R=1000.000m L=96.406m	0.808	US=2.5%
43.362	-0.500	42.642		1200.000			
43.312	-0.500	42.603	R=1000.000m L=96.406m	1210.000	R=1000.000m L=96.406m	0.708	US=2.5%
43.262	-0.500	42.688		1220.000			
43.212	-0.500	42.687	R=1000.000m L=96.406m	1230.000	R=1000.000m L=96.406m	0.573	US=2.5%
43.162	-0.500	42.683		1240.000			
43.112	-0.500	42.669	R=1000.000m L=96.406m	1250.000	R=1000.000m L=96.406m	0.479	US=2.5%
43.062	-0.500	42.623		1260.000			
43.012	-0.500	42.597	R=1000.000m L=96.406m	1270.000	R=1000.000m L=96.406m	0.415	US=2.5%
42.962	-0.500	42.538		1280.000			
42.912	-0.500	42.442	R=1000.000m L=96.406m	1290.000	R=1000.000m L=96.406m	0.469	US=2.5%

LONG SECTION
SCALE H = 1:1000; V = 1:200 @ A1

IR	DATE	DESCRIPTION
A	27-01-2017	PLANNING SUBMISSION ISSUE



File name: \\ELU\AECOM\NET\COM\PROJECT\VOL\UK\OFF-1\PROJECT\HIGHWAYS - ST.ATHAN\3 EXECUTION\3 DOCUMENTS\88 CAD\01 WORKING\DRAWINGS\0600 - EARTH\WORKS\60509148-SHT-30-0000-CT-0601_005.DWG Last saved by: BENBRIDGEB Last Printed: 2017-03-14
 Project Management Initials: Designer: RG Checked: RM Approved: RM ISO A1 84mm x 84mm

