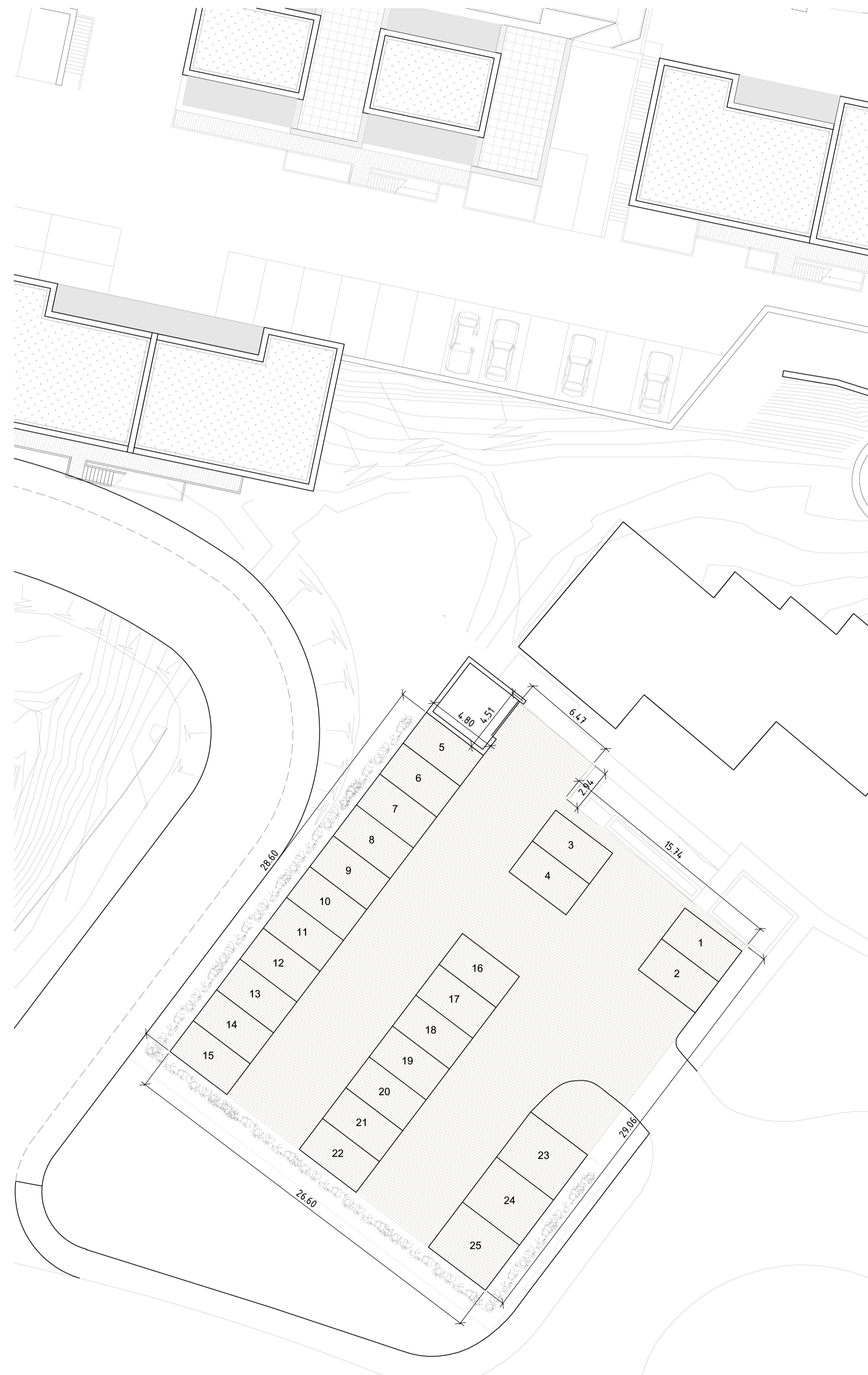
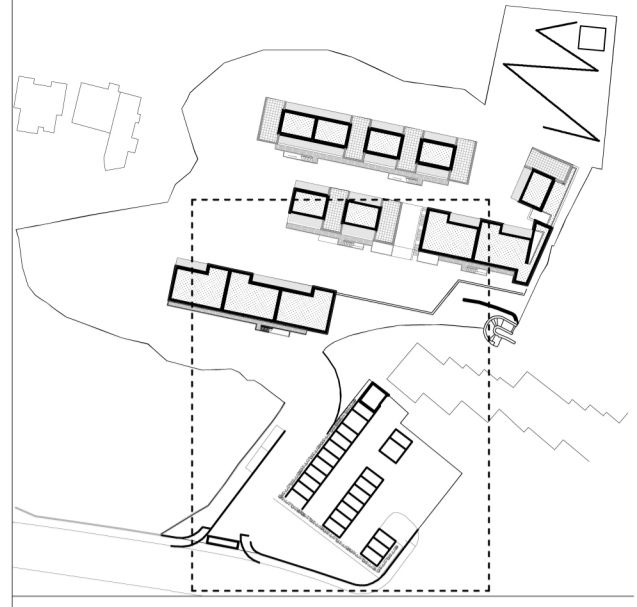


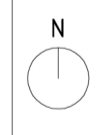
EXISTING PARKING LAYOUT NORTHCLIFF APARTMENTS



PROPOSED PARKING LAYOUT NORTHCLIFF APARTMENTS



- NOTES:
1. PARKING AREAS:
 EXISTING PARKING AREA NORTHCLIFF APARTMENTS
 = 424.33 M2 + 257.05 M2 = 681.38 M2
 PROPOSED PARKING AREA NORTHCLIFF APARTMENTS
 = 798.79 M2
 2. LAND BETWEEN EXISTING PARKING AREAS IS
 LANDSCAPED AS WITH THE LAND BETWEEN THESE
 AREAS AND PAGET TERRACE.
 3. EXISTING BIN STORAGE IS LOCATED WITHIN THE
 MANOEUVRING AREA.



REVISIONS:
 PARKING BAY DIMENSIONS MIN. 2.6 m X 4.8 m

PROJECT
 LAND AT NORTHCLIFF LODGE

DRAWING
 PARKING LAYOUT NORTHCLIFF APART.
 EXISTING - PROPOSED

SCALE
 1:200 @ A1
 DATE
 JUNE 16

DRAWN
 HHL

DRAWING NO.
 1321/S110C

DRAWING STATUS

PRELIMINARY INFORMATION APPROVAL PLANNING

TENDER B REQS CONTRACT CONSTRUCTION

LOYN & CO ARCHITECTS
 21 VICTORIA ROAD, PENARTH, VALE OF GLAMORGAN, CF44 3EG
 T: +44 (0)29 2011132 F: +44 (0)29 20402784 E: architecture@loyn.co.uk
 COPYRIGHT LOYN & CO ARCHITECTS. DO NOT SCALE THIS DRAWING EXCEPT FOR PLANNING PURPOSES