

Land to be Offered for Adoption
See Drawing 0991-020

43m Forward Visibility Into Roundabout
See Drawing 0991-020

56m Forward Visibility Into Roundabout
Appropriate for Recorded 85th Percentile Speed of 36mph

3.5m Wide Verge

Existing Speed Limit Transition
to be Relocated to the West. For
Details See Drawing 0991-020

Eglwys
Brewis

EGLWYS BREWIS ROAD

MOD Access to be Retained

For Details of
Roundabout See
Drawing 0991-013

3.5m Wide Foot/Cycleway
to be Illuminated

67m Forward Visibility Into Roundabout
Appropriate for Recorded 85th Percentile Speed of 39mph

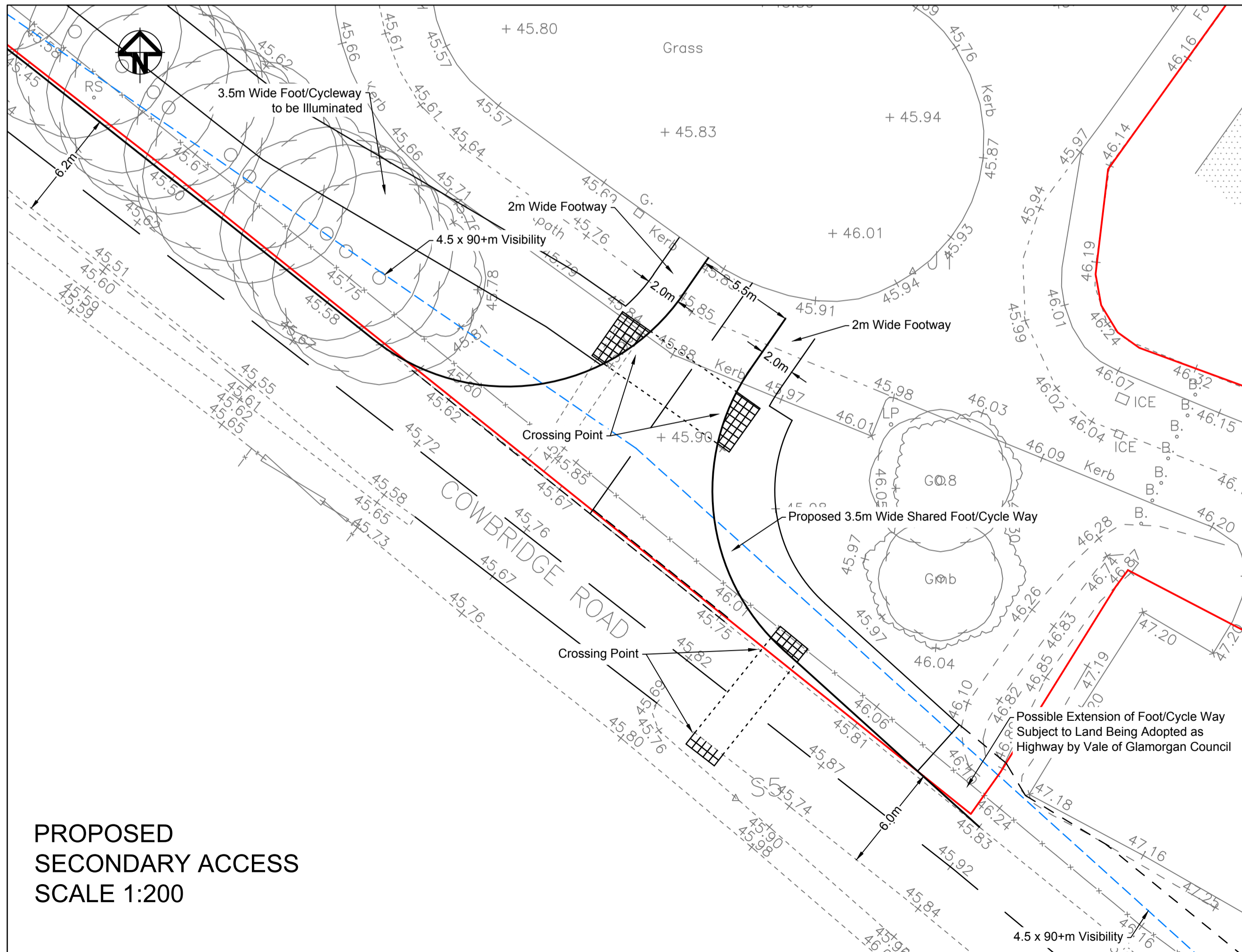
3.5m Wide Foot/Cycleway
to be Aligned to Enable Row of Trees to be Retained

4.5 x 90+m Visibility

Proposed Secondary Access
to be Illuminated

4.5 x 90+m Visibility

Possible Extension of Foot/Cycle Way
Subject to Land Being Adopted as
Highway by Vale of Glamorgan Council



PROPOSED
SECONDARY ACCESS
SCALE 1:200

I	Roundabout Island	20-03-18
H	VoG Council Comments	06-12-17
G	Roundabout Relocated North	29-11-17
F	Layout Amendments	02-10-17
E	Cycleway Alignment Altered	13-06-17
D	footway extended south	12-06-17
C	footway extended north	08-05-17
B	footway extended south	15-03-17
A	First Issue	08-03-17

acstro
Prifffyrdd a Thrafnidiaeth
Highways & Transportation
Ty Penbryn, Salem, Llandeilo, SA19 7LT
E-mail: mail@acstro.com
www.acstro.com
Tel: 01558 824021

COWBRIDGE ROAD, ST. ATHAN

PROPOSED ACCESS

0991	011	I
1:500 & 1:200		@ A1