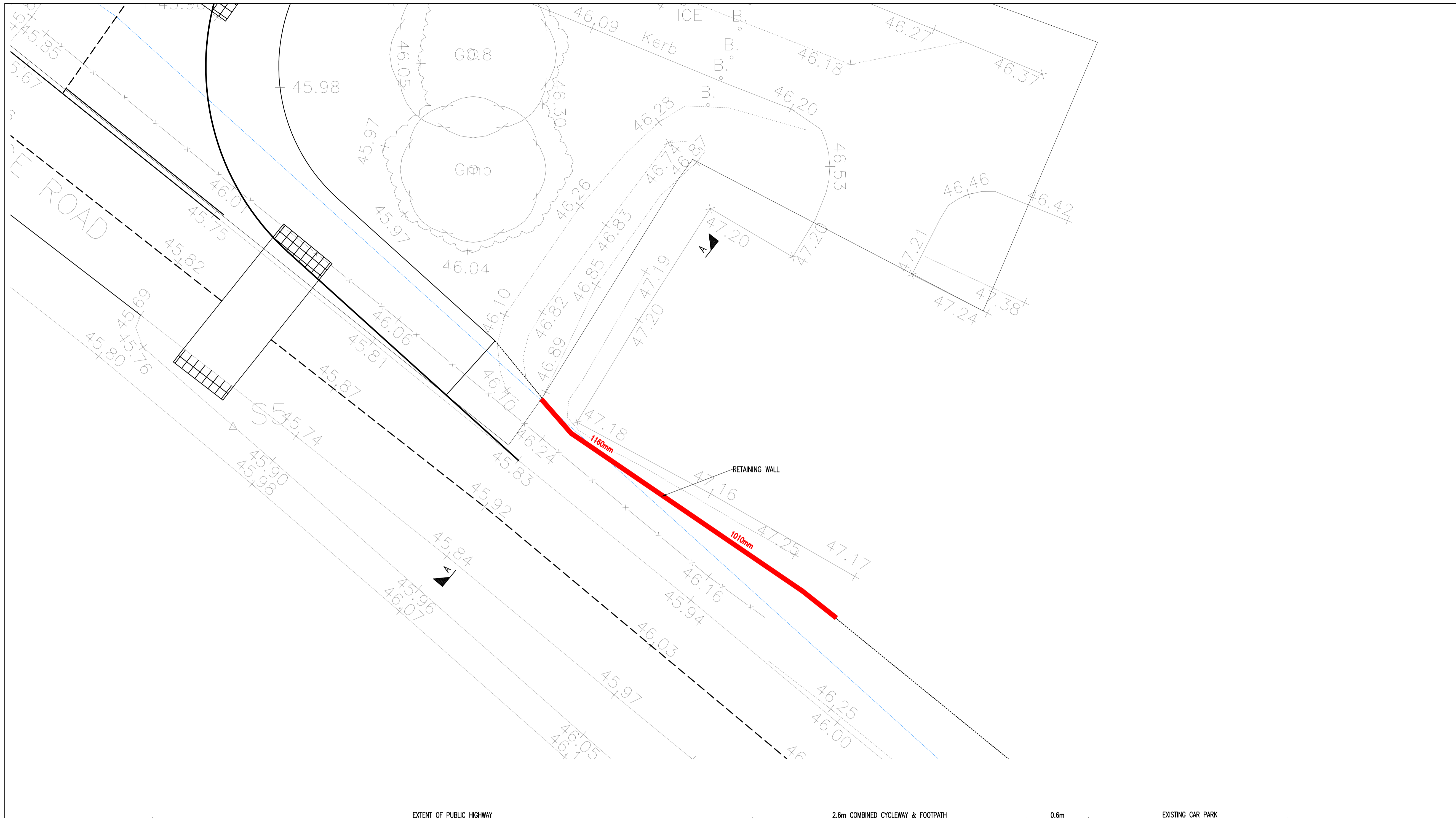
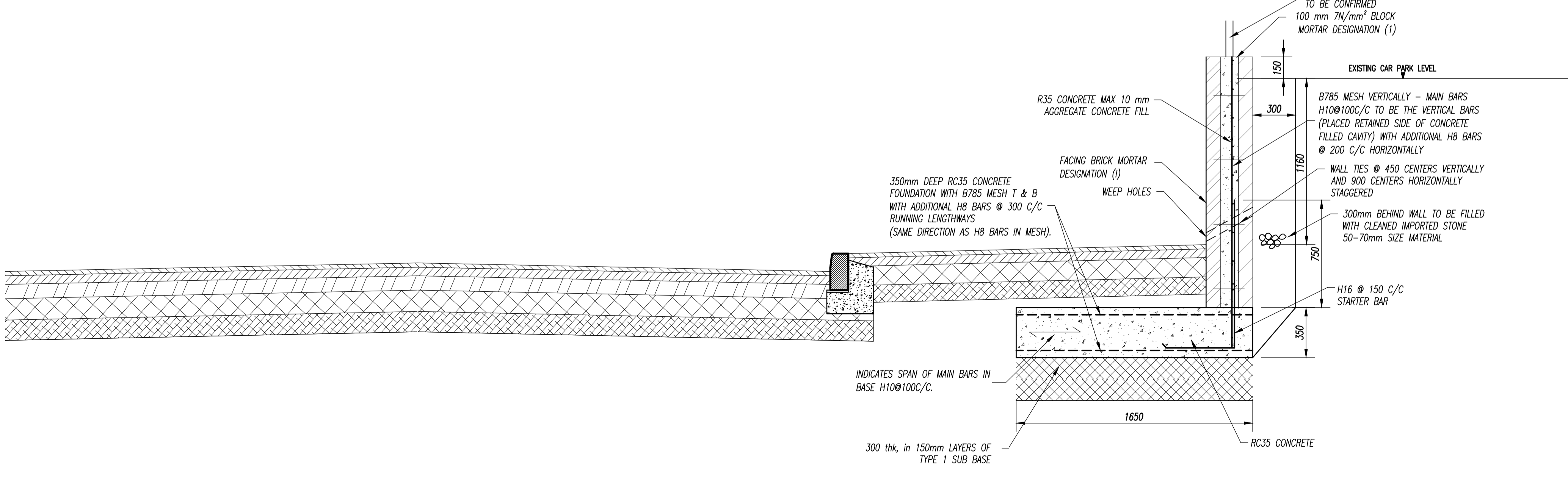


NOTES

- GENERAL**
1. ALL DIMENSIONS ARE IN MILLIMETRES UNLESS NOTED OTHERWISE.
 2. ALL LEVELS RELATE TO ORDNANCE DATUM UNLESS NOTED OTHERWISE.
 3. DO NOT SCALE FROM THIS DRAWING. USE FIGURED DIMENSIONS ONLY.
 4. ANY DISCREPANCIES TO BE REPORTED IMMEDIATELY TO THE ENGINEER.
 5. THIS DRAWING TO BE READ IN CONJUNCTION WITH ALL RELEVANT ARCHITECTS, SUBCONTRACTORS AND SPECIALISTS DRAWINGS AND SPECIFICATIONS.
 6. THIS DRAWING IS COPYRIGHT © PROPERTY OF SHEAR DESIGN LIMITED.



EXTENT OF PUBLIC HIGHWAY 2.6m COMBINED CYCLEWAY & FOOTPATH 0.6m EXISTING CAR PARK



A	30.01.18	RETAINING WALL DETAIL UPDATED	AA	MJ
REV	DATE	DESCRIPTION	BY	CHK
AMENDMENTS				
CLIENT: EDENSTONE HOMES				
PROJECT: COWBRIDGE ROAD, ST ATHAN RESIDENTIAL DEVELOPMENT				
TITLE: OFFSITE COMBINED FOOTWAY & CYCLEWAY OPTION 1				
<p>SHEAR design Consulting Civil and Structural Engineers</p> <p>7 Ashtree Court - Woodys Close - Cardiff Gate Business Park - Cardiff - CF23 8RW Tel: 029 2054 7000 - Fax: 029 2054 7001 - www.shear-design.com - enquiries@shear-design.com</p>				
DRAWN	CHECKED	DATE	SCALE	
AA	MJ	DEC 2017	1:100 @ A1	
STATUSKEY: I = INFORMATION P = PRELIMINARY A = APPROVAL CO = CONTRACT				
T = TENDER C = CONSTRUCTION AB = AS-BUILT				
STATUS: I		DRAWING NUMBER: 16156-SK200		REVISION: A