

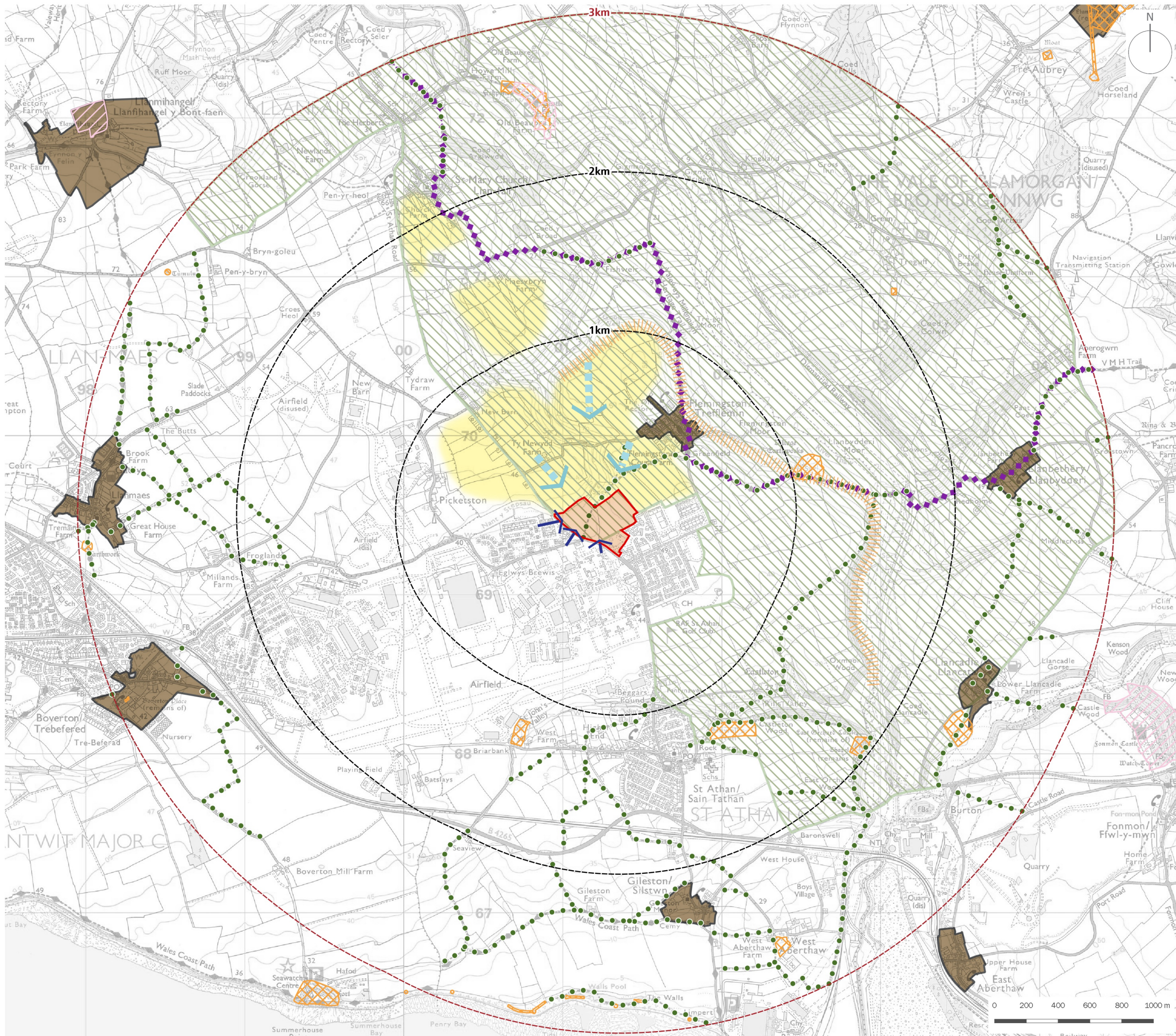


---

## Plans

**Plan EDP 1:** Landscape Planning Considerations and Visual Envelope  
(EDP3504/09a 26 May 2017 MD/LH)

**Plan EDP 2:** Zone of Theoretical Visibility and Viewpoint Locations  
(EDP3504/12 26 May 2017 MD/LH)



- Site Boundary
- Range Rings (at 1km intervals)
- 3km Detailed Study Area
- Valeways Millennium Heritage Trail
- Public Rights of Way
- Historic Parks and Gardens
- Scheduled Monument
- Conservation Area
- Local Ridgelines
- Approximate Extent of Visual Envelope
- SLA 2: Upper & Lower Thaw Valley
- MG 2 (5) Site Allocation
- Likely View Towards The Site
- Open Close Range Views into the Site

client  
**Edenstone Homes Ltd**

project title  
**Land off Cowbridge Road, St. Athan, Vale of Glamorgan**

drawing title  
**Plan EDP 1: Landscape Planning Considerations and Visual Envelope**

date 26 MAY 2017 drawn by LH  
drawing number EDP3504/09a checked MD  
scale Refer to Scale Bar QA MC



info@edp-uk.co.uk www.edp-uk.co.uk  
Cirencester 01285 740427 Cardiff 02921 671900 Shrewsbury 01939 211190