

1601274 PN

# Supporting Technical Information for **Vodafone** :-

Barry, Vale of Glamorgan

**Vodafone Site – 96049VF**



**Date Prepared:** 21<sup>st</sup> Oct 2016





# KEY TO COVERAGE PLOTS

The enclosed radio propagation plots are based on Ordnance Survey geographical information.

The level of coverage provided by a particular site is dependant on a number of variables. The main factors which determine the extent of coverage are: the frequency of the signal emitted, the height of the antenna above ground level, the characteristics of the surrounding topography and the type and occurrence of ground clutter such as buildings and trees which can cause 'shadows' or reflections and can absorb the signal.

The Radio Planners have produced accurate visual representations of the level of coverage available in this particular area by using advanced computer modelling software based on a Geographical Information System. The programme takes the numerous variables as above into account and can then calculate and plot the strength of the signal.

Existing and proposed sites are indicated by a black circle and dot with the site number.. The orientation of the antennas is shown by the cones.



Site cones show orientation of antennas

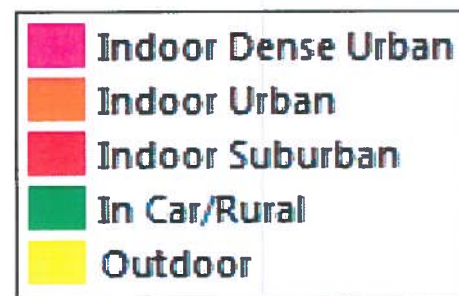
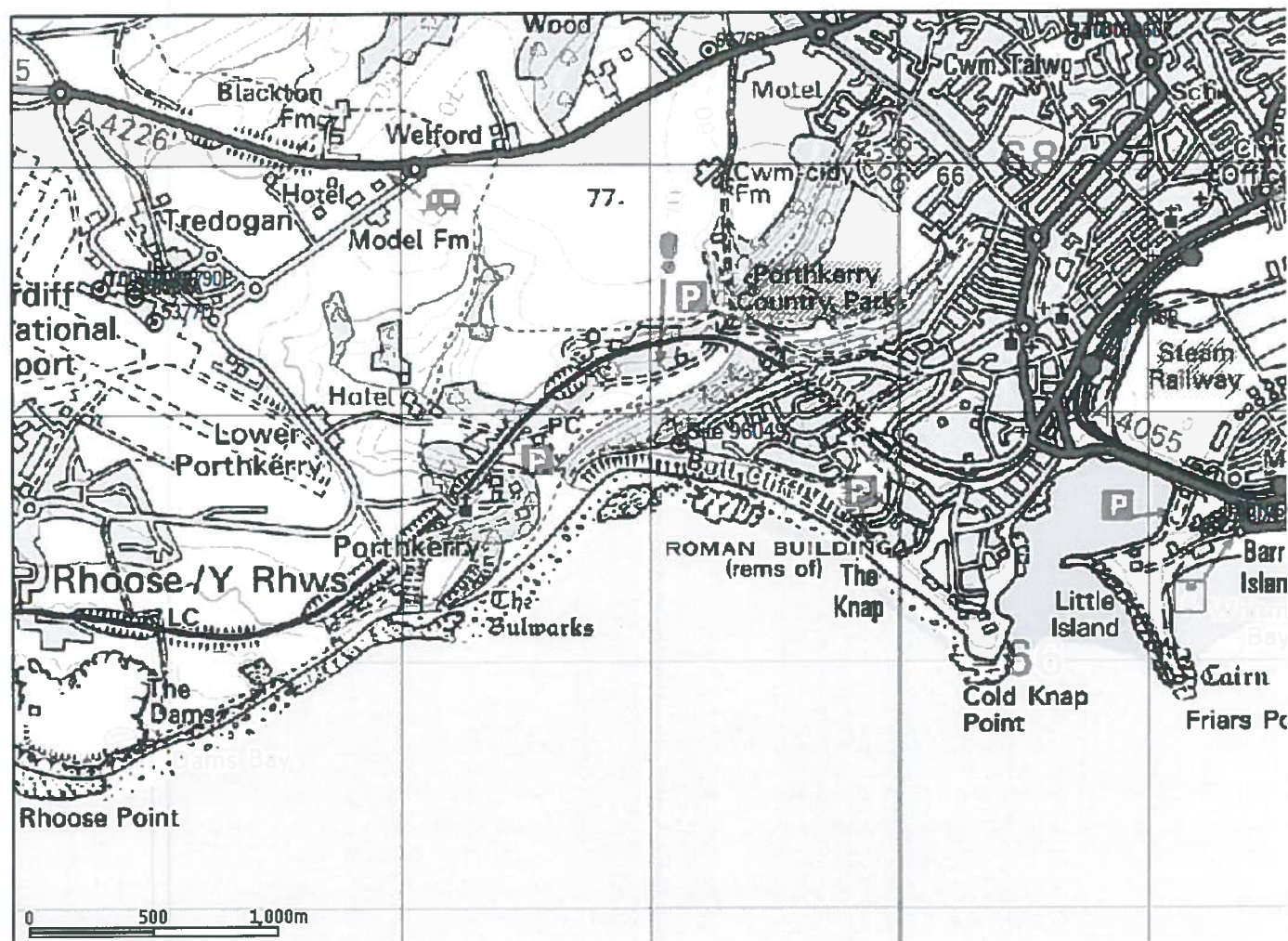
Note on large rooftop sites the antenna can be distributed in different locations from the site location. This is represented by a line extending outwards from the site to the antenna.

<b>Pink</b>	<b>Sufficient signal strength to provide adequate service for indoor use of a hand portable mobile in dense urban areas.</b>	<b>Indoor Dense Urban</b>
<b>Orange</b>	<b>Sufficient signal strength to provide adequate service for indoor use of a hand portable mobile in urban areas.</b>	<b>Indoor Urban</b>
<b>Red</b>	<b>Sufficient signal strength to provide adequate service for indoor use of a hand portable mobile in suburban areas.</b>	<b>Indoor Suburban</b>
<b>Green</b>	<b>Sufficient signal strength to provide adequate service for use of a hand portable mobile in a car</b>	<b>In Car</b>
<b>Yellow</b>	<b>Sufficient signal strength to provide adequate service for outdoor use of a hand portable mobile.</b>	<b>Outdoor</b>
<b>No Colour</b>	<b>Insufficient signal strength to provide reliable service.</b>	<b>No Coverage</b>





## Vodafone - Existing LTE (4G) Coverage



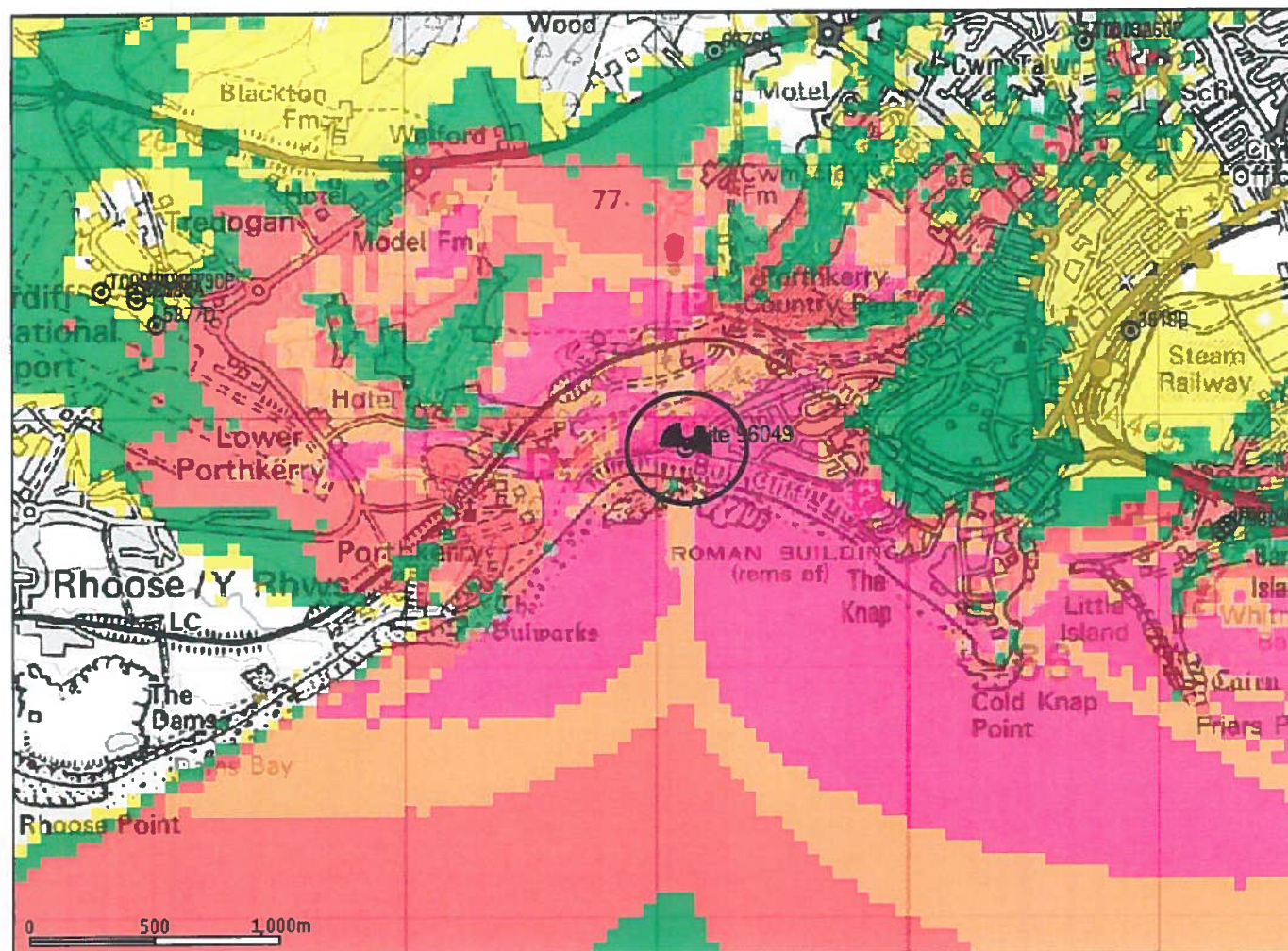
This coverage plan must be read in conjunction with the key and site specific supplementary information. Each colour block represents 50 metres square.







## Vodafone - Proposed LTE (4G) Coverage



This coverage plan must be read in conjunction with the key and site specific supplementary information. Each colour block represents 50 metres square.

**Proposed site 96049VF circled**

