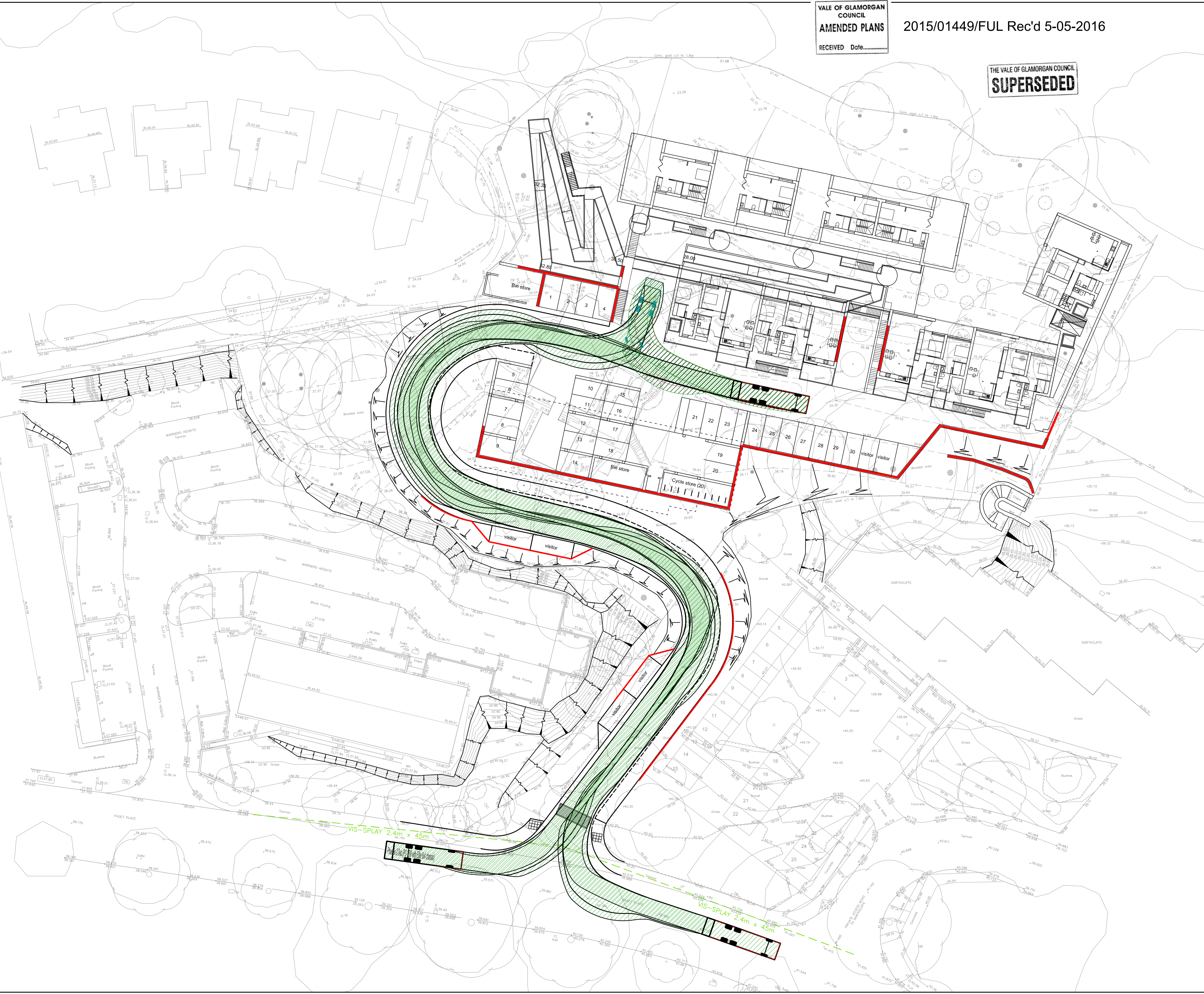


VALE OF GLAMORGAN COUNCIL
 AMENDED PLANS
 RECEIVED Date.....

2015/01449/FUL Rec'd 5-05-2016

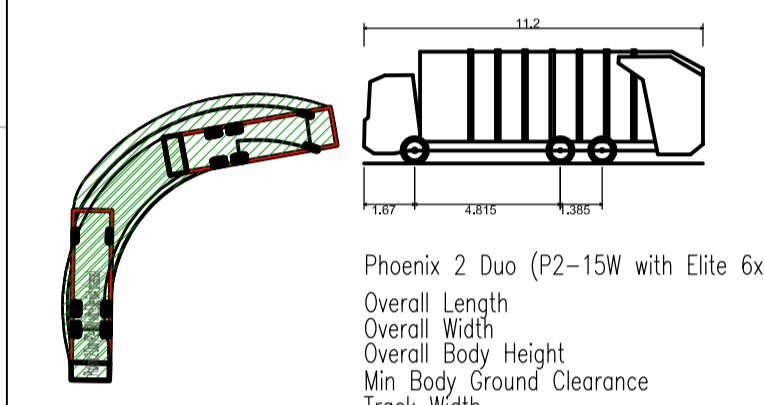
THE VALE OF GLAMORGAN COUNCIL
SUPERSEDED



NOTES

- GENERAL**
1. ALL DIMENSIONS ARE IN MILLIMETRES UNLESS NOTED OTHERWISE.
 2. ALL LEVELS ARE IN METRES UNLESS NOTED OTHERWISE.
 3. DO NOT SCALE FROM THIS DRAWING. USE FIGURED DIMENSIONS ONLY.
 4. ANY DISCREPANCIES TO BE REPORTED IMMEDIATELY TO THE ENGINEER.
 5. THIS DRAWING TO BE READ IN CONJUNCTION WITH ALL RELEVANT ARCHITECTS, SUBCONTRACTORS AND SPECIALISTS DRAWINGS AND SPECIFICATIONS.
 6. THIS DRAWING IS COPYRIGHT © PROPERTY OF SHEAR DESIGN LIMITED.

KEY



Phoenix 2 Duo (P2-15W with Elite 6x4 chassis)
 Overall Length 11.200m
 Overall Height 2.530m
 Overall Body Height 3.751m
 Min Body Ground Clearance 0.304m
 Track Width 2.500m
 Lock-to-lock time 4.00s
 Curb to Curb Turning Radius 9.500m

REV	DATE	DESCRIPTION	BY	CHK
AMENDMENTS				
CLIENT: CELTIC DEVELOPMENTS PENARTH LTD.				
PROJECT: NORTHCLIFFE LODGE, PAGET ROAD PENARTH				
TITLE: PROPOSED VEHICLE TRACKING				

SHEAR design
 Consulting Civil and Structural Engineers

7 Ashtree Court - Woody Close - Cardiff Gate Business Park - Cardiff - CF23 8RW
 Tel: 029 2054 7000 - Fax: 029 2054 7001 - www.shear-design.com - enquiries@shear-design.com

DRAWN: BH	CHECKED: SM	DATE: DEC15	SCALE: 1:250 @ A1
STATUS KEY: I = INFORMATION P = PRELIMINARY A = APPROVAL CO = CONTRACT		T = TENDER C = CONSTRUCTION AB = AS-BUILT	
STATUS: A	DRAWING NUMBER: 15025-105	REVISION: -	