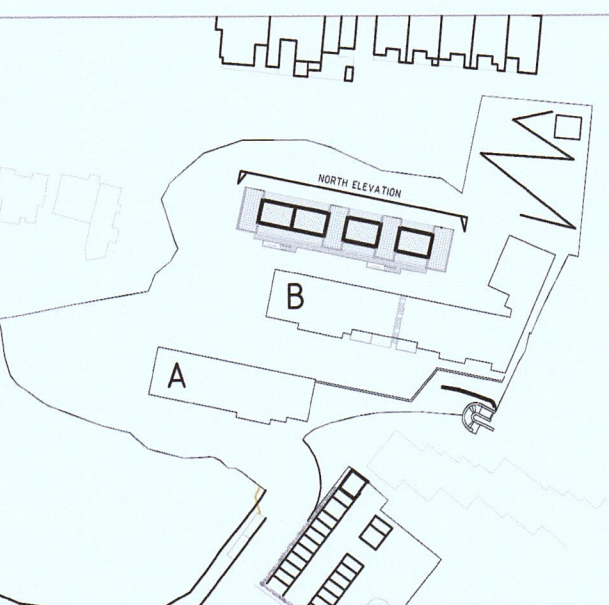




**MATERIALS**

- A. EXTERNAL WALLS: White facing brick
- B. WINDOWS & DOORS: Polyester powder coated aluminum frames (colour: to be confirmed)
- C. EXTERNAL DOORS: Painted solid timber (colour: to be confirmed)
- D. STAIR, WALKWAY, RAMP BALUSTRADING: Zinc standing seam cladding
- E. BALCONY BALUSTRADING: Polyester powder coated metal railing (colour: to be confirmed)
- F. DUPLEX APARTMENT WALLING: Zinc standing seam cladding
- G. ROOFS: Roof garden sedum planting (Refer to Landscape Architects schedule)



REVISIONS:

PROJECT  
LAND AT NORTHCLIFF LODGE

DRAWING  
BLOCK C: NORTH ELEVATION  
[WITH CONTEXT]

SCALE  
1:200 @ A1  
DATE  
NOV 15  
DRAWN  
RT  
DRAWING NO.  
1321/S402

DRAWING STATUS  
PRELIMINARY  INFORMATION  APPROVAL  PLANNING   
TENDER  B. REGS  CONTRACT  CONSTRUCTION

LOYN & CO ARCHITECTS  
21 VICTORIA ROAD PENARTH VALE OF GLAMORGAN CF64 3EG  
T: +44 (0)29 20711432 F: +44 (0)29 20402784 E: architecture@loyn.co.uk  
COPYRIGHT LOYN & CO ARCHITECTS. DO NOT SCALE THIS DRAWING EXCEPT FOR PLANNING PURPOSES.