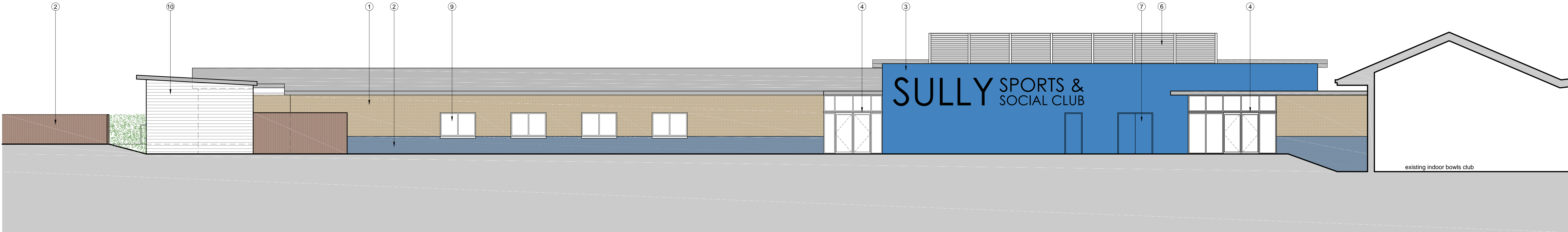
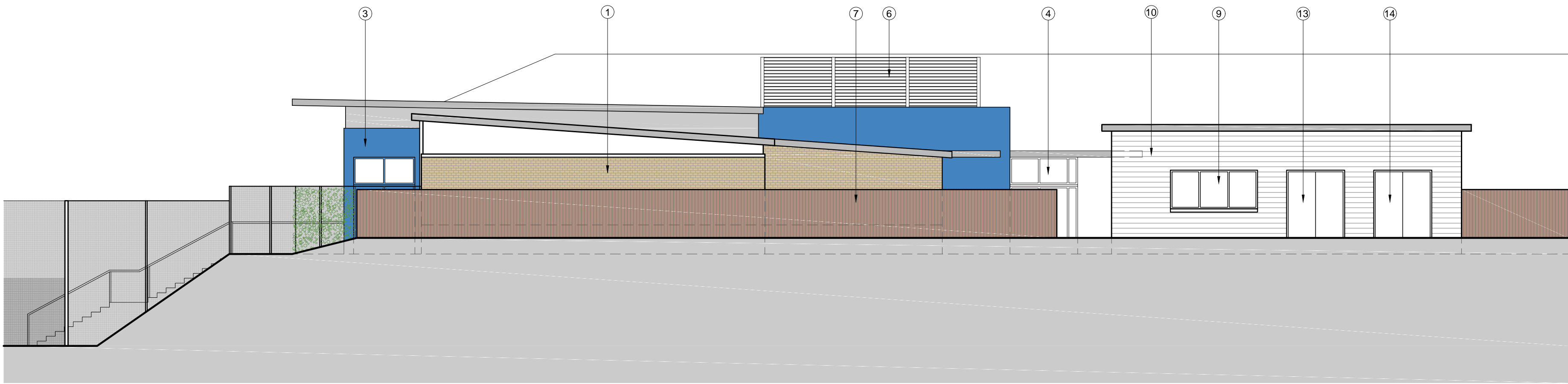


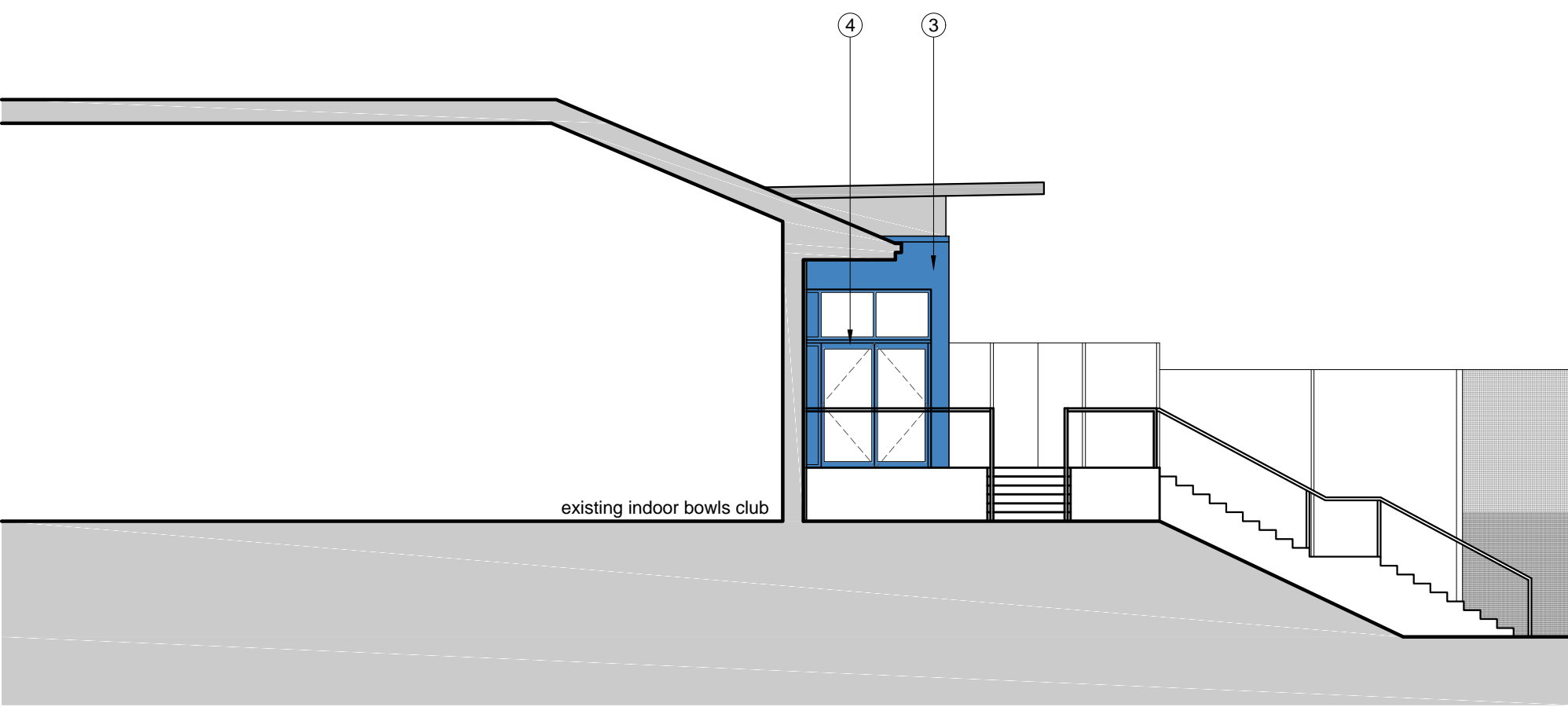
south elevation



north elevation



east elevation



west elevation

Key

- | | |
|---|--|
| ① Brick to match existing indoor bowls club | ⑧ Metal Balustrade |
| ② Blue engineering brick | ⑨ Powder coated aluminium window |
| ③ Rendered Blockwork | ⑩ Fibre cement weatherboard |
| ④ curtain walling | ⑪ Close timber boarding |
| ⑤ Glass Balustrade | ⑫ Single ply high performance roofing system |
| ⑥ Aluminium louvres | ⑬ Glazed aluminium door |
| ⑦ Metal framed/ metal doors | ⑭ Timber door |

Revisions

Job Title

Sully Sports Ground

Client

St Modwen and Sully Sports and Social Club

Drawing

Proposed Elevations
Sports and Social Club/Pavilion

Project No.

3773

Drawing No.

(08)311

Rev

Scale

1:100 @ A1

Date 12.05.16

Drawn / Checked

gm/rg

Status

planning

m 1 2 3 4 5 10

Quayside
40 Howell Road
BRISTOL
BS8 4UQ
T +44 (0) 117 3169 467
E mailbox@arturus.co.uk
W www.arturus.co.uk

ARTURUS
ARCHITECTS