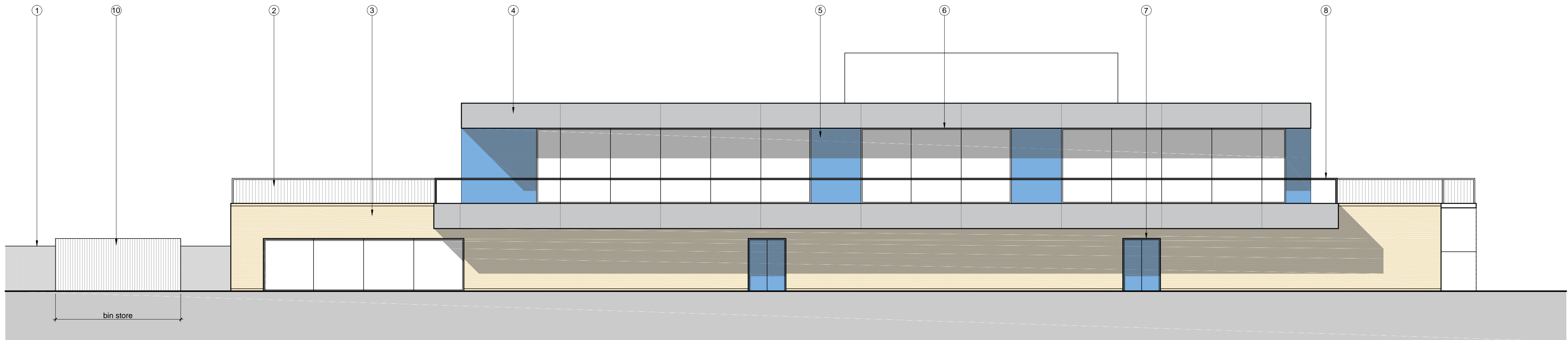
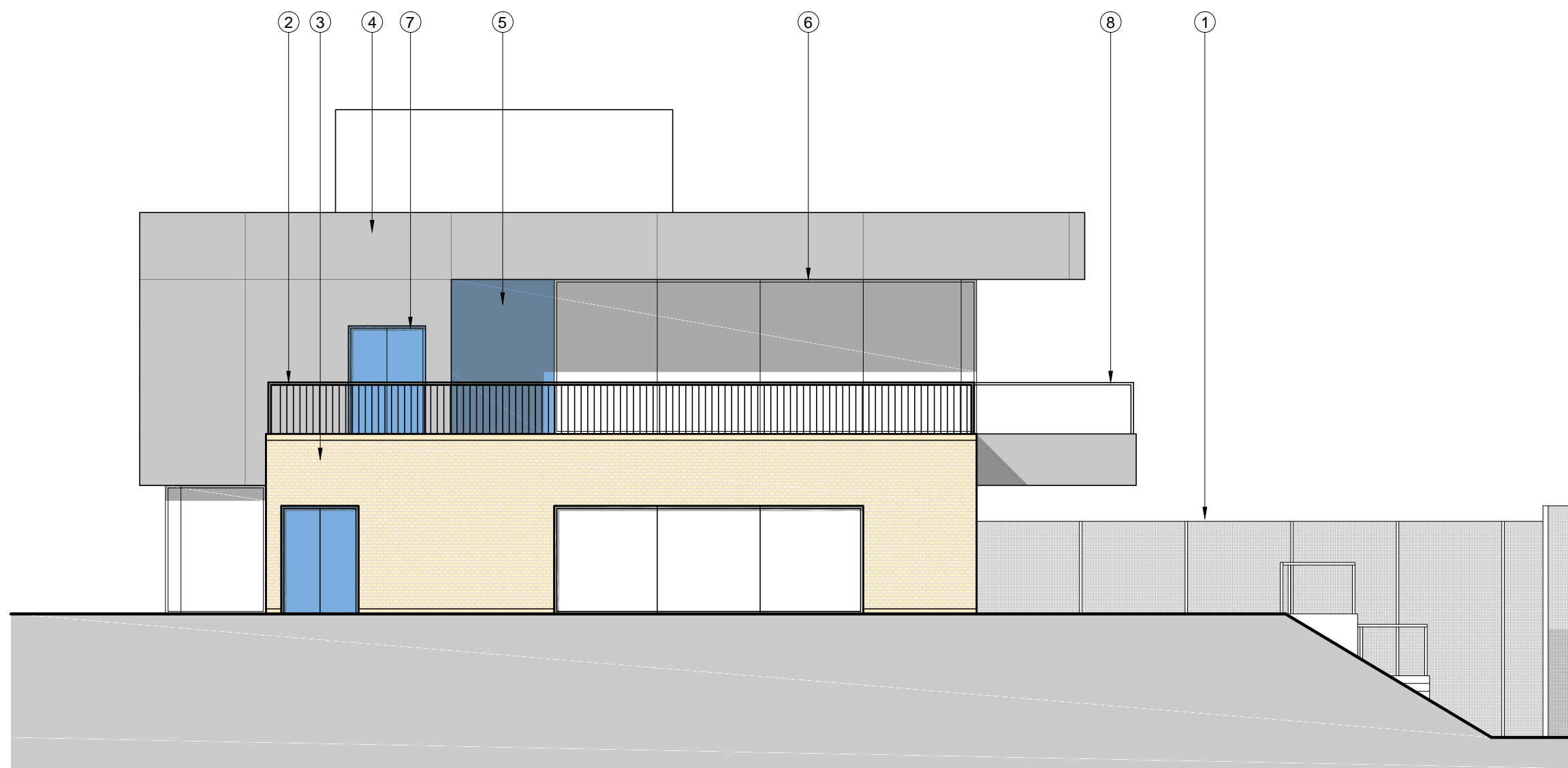


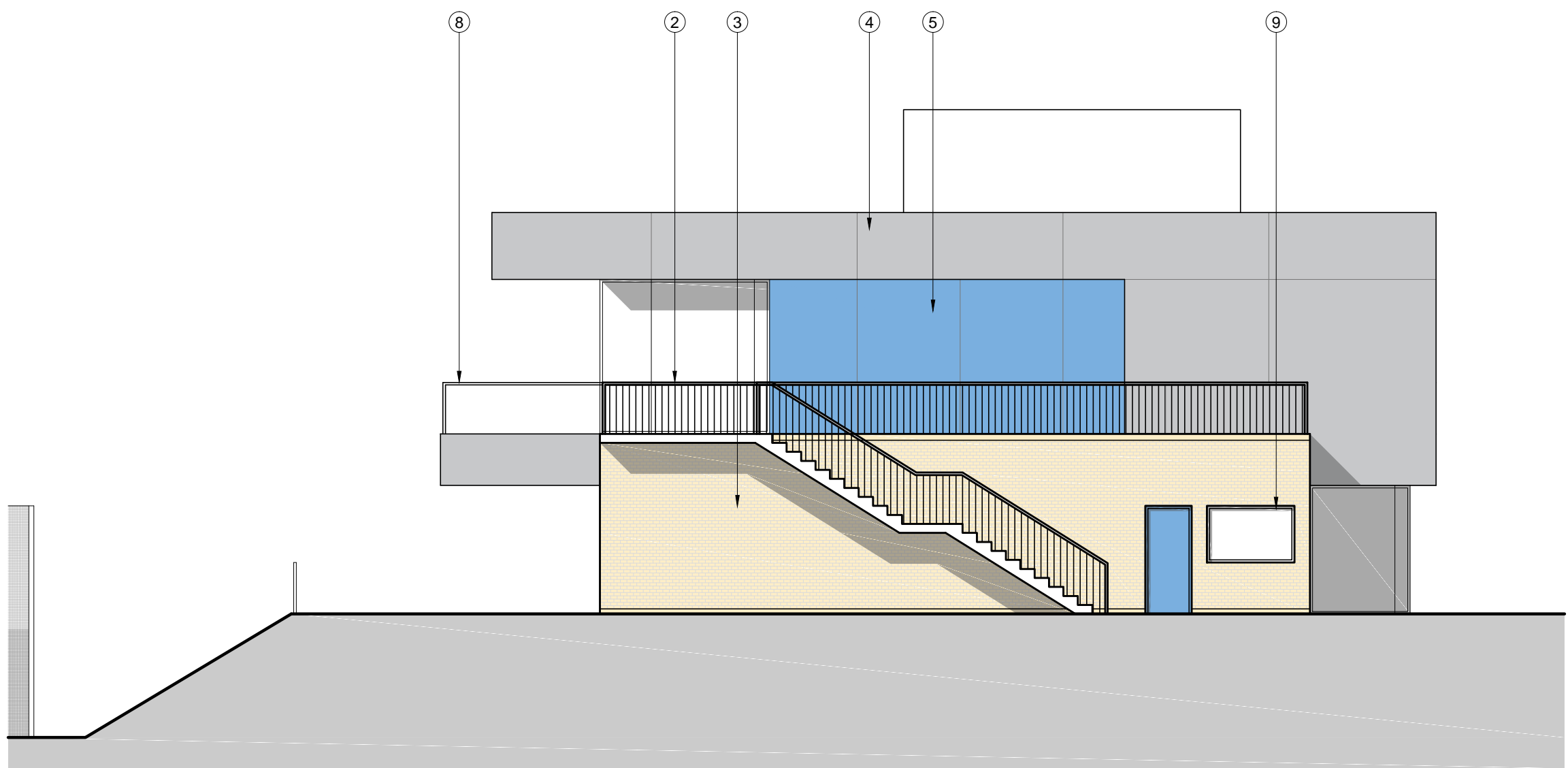
South elevation



North elevation



West elevation



East elevation

Key

- | | |
|---|----------------------------------|
| ① 1.8m high coated mesh wire fence | ⑥ Aluminium framed window system |
| ② Galvanised balustrade | ⑦ Metal framed/ metal doors |
| ③ Brick to match existing indoor bowls club | ⑧ Glass Balustrade |
| ④ Coated aluminium cladding panel- colour 1 | ⑨ Powder coated aluminium window |
| ⑤ Coated aluminium cladding panel- colour 2 | ⑩ Stained timber cladding |

Revisions

m 1 2 3 4 5 10

Job Title
Sully Sports Ground

Client
St Modwen and Sully Sports and Social Club

Drawing
Proposed Sports and Social Club Elevations

Project No.	Drawing No.	Rev	Scale
3773	(08)310		1:100 @ A1

Date	03.06.15	Drawn / Checked	gm/rg	Status	planning
------	----------	-----------------	-------	--------	----------

Quayside
40 Hotwell Road
BRISTOL
BS8 4UG
T +44 (0) 117 3169 467
E mailbox@arturus.co.uk
W www.arturus.co.uk

