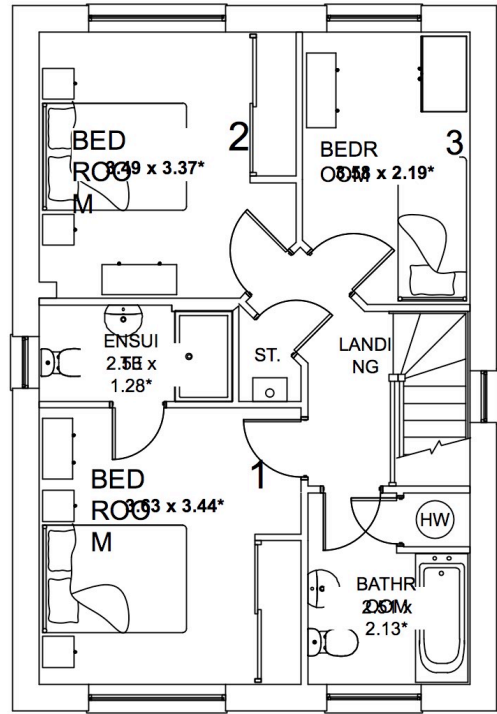


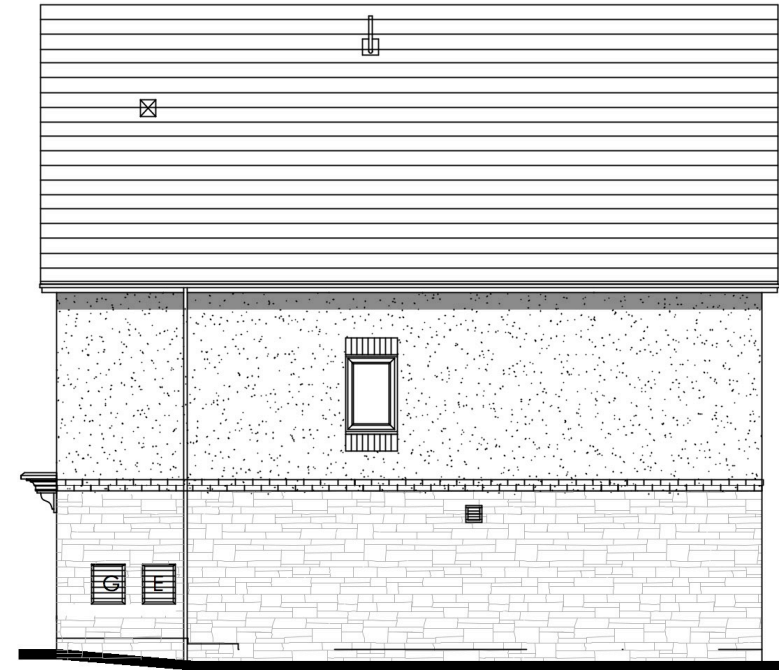
THE VALE OF GLAMORGAN COUNCIL
SUPERSEDED



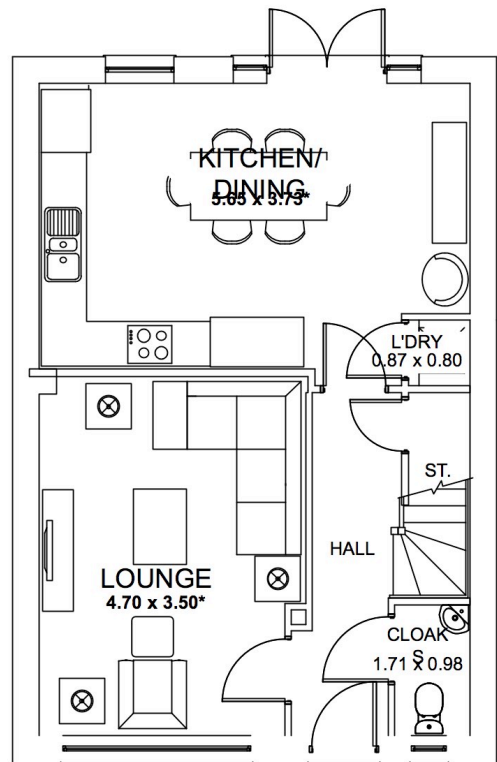
First Floor



Front Elevation



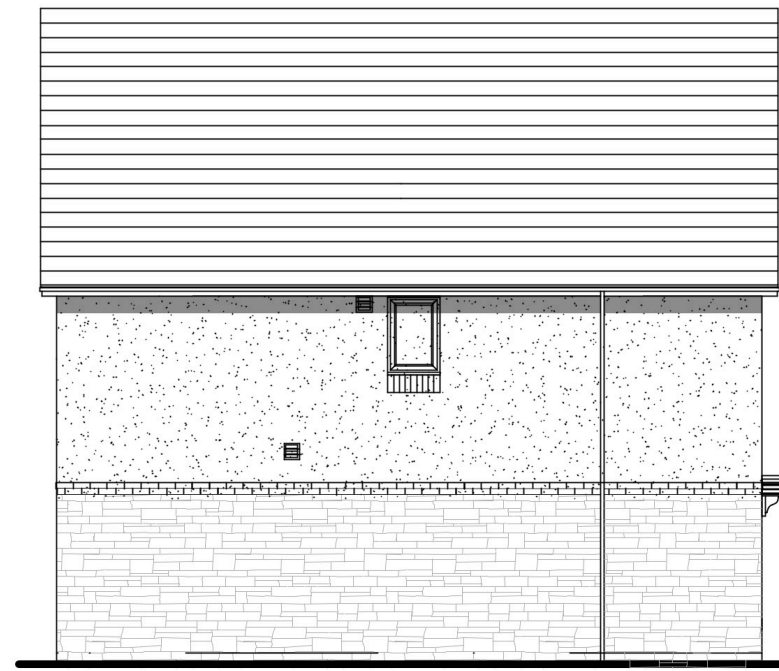
Side Elevation



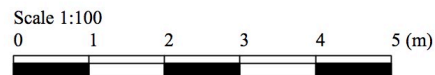
Ground Floor



Rear Elevation



Side Elevation



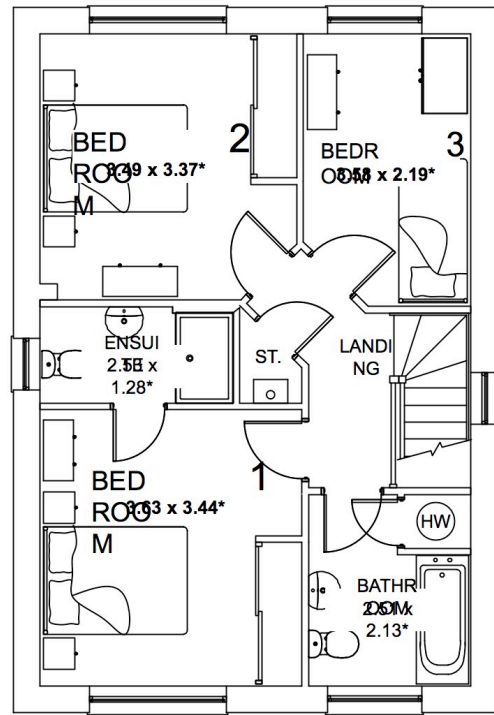
The Warwick

Heritage Collection

St Nicholas Render/Stone
 1059sqft 98.40m²
 DATE: October 2015
 REV: -

WF_WARW_DM.1.0

Drawing Scale 1:100 @ A3
 Bedroom dimensions taken into wardrobe recess
 * Maximum Dimension



First Floor

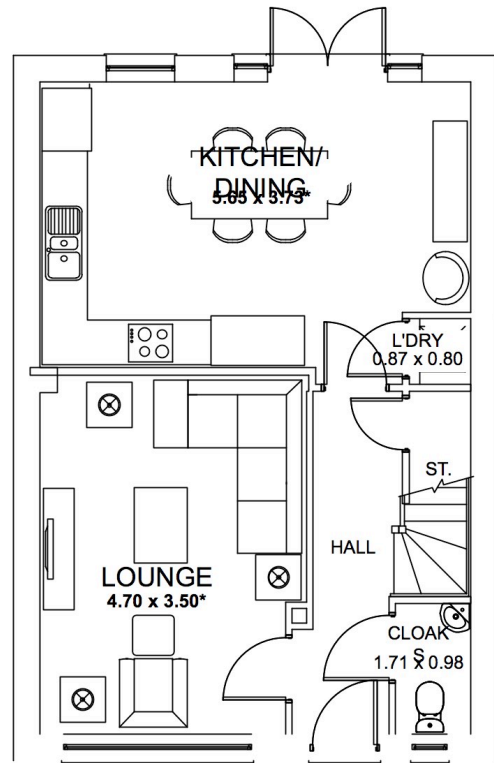


Front Elevation



Side Elevation

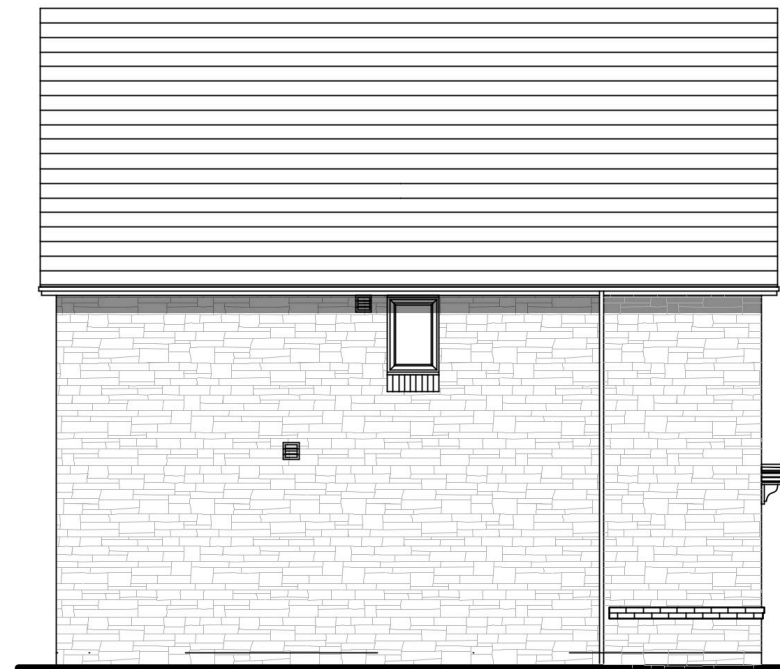
THE VALE OF GLAMORGAN COUNCIL
SUPERSEDED



Ground Floor



Rear Elevation



Side Elevation

The Warwick

Heritage Collection

St Nicholas Stone
 1059sqft 98.40m²
 DATE: October 2015
 REV: -

WF_WARW_DM.1.0

Drawing Scale 1:100 @ A3
 Bedroom dimensions taken into wardrobe recess
 * Maximum Dimension