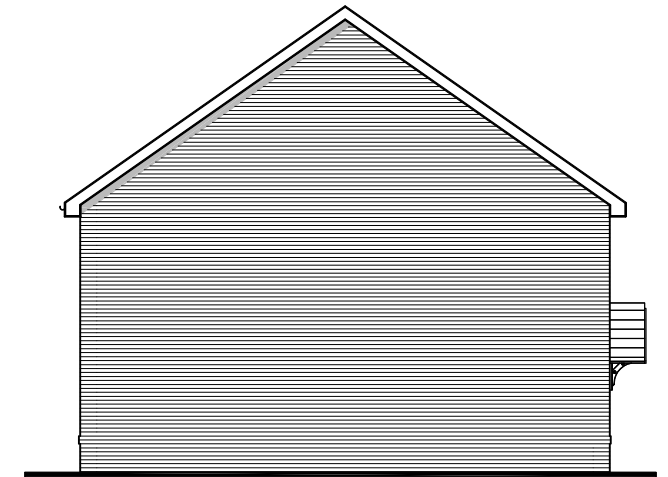
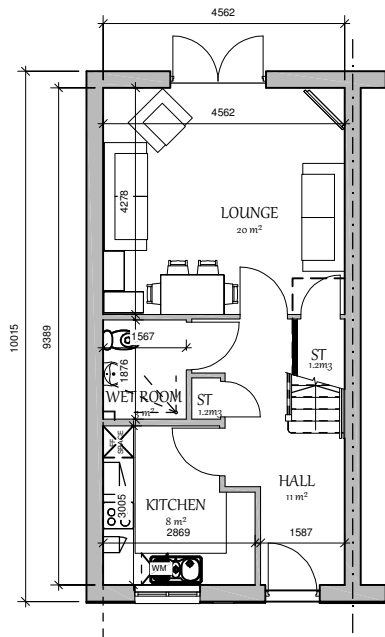




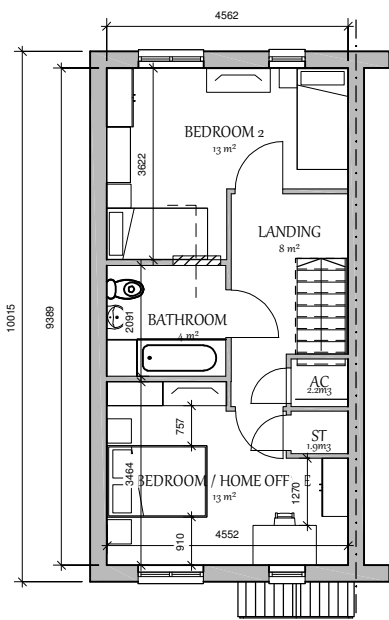
Front Elevation



Side Elevation



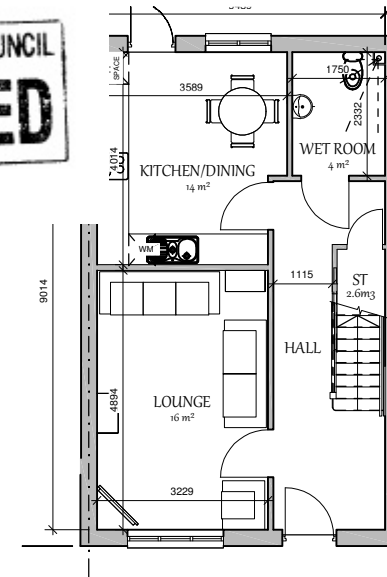
Ground Floor



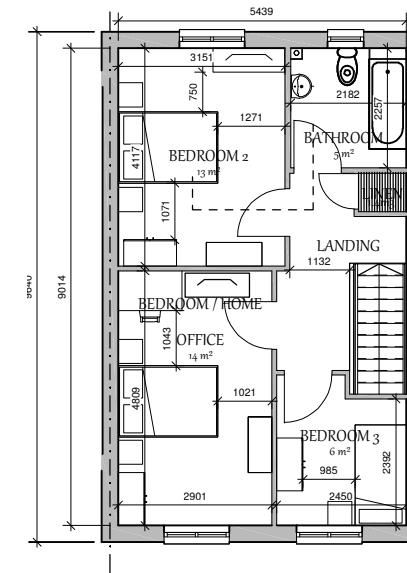
First Floor

Plots 25,27,29 or  
26,28,30 opp  
HOUSE TYPE 4.2.2  
Ground Floor = 42 sqm  
First Floor = 41 sqm  
Total = 83 sqm

THE VALE OF GLAMORGAN COUNCIL  
**SUPERSEDED**



Ground Floor



First Floor

Plots 31 or  
32 opp  
HOUSE TYPE 5.3.1  
Ground Floor = 47.8 sqm  
First Floor = 46.3 sqm  
Total = 94.1 sqm



Rear Elevation

4.2.2 & 5.3.1

DATE: February 2015  
REV: -

Drawing Scale 1:100 @ A2