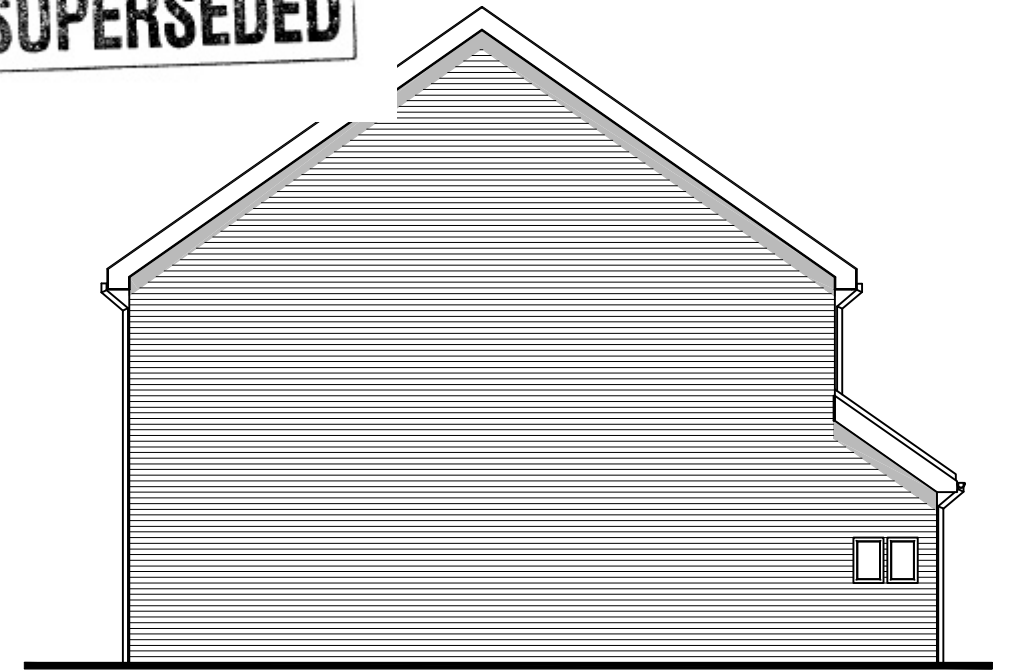


FIRST FLOOR

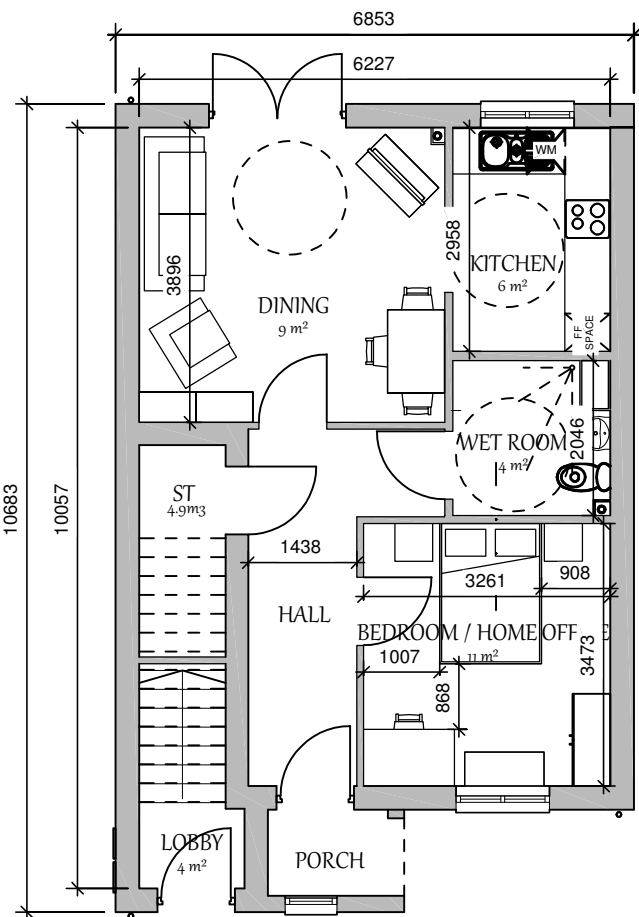


FRONT ELEVATION

THE VALE OF GLAMORGAN COUNCIL
SUPERSEDED



SIDE ELEVATION



GROUND FLOOR



REAR ELEVATION

Plots 60, 61, 62, 63

HOUSE TYPE 2.1.2

Ground Floor = 51.2 sqm

First Floor including Ground Floor

lobby = 52.9 sqm

Total = 104.1 sqm

Scale at A3 | 1:100 @ A3



Redrow Homes South Wales
www.redrow.co.uk