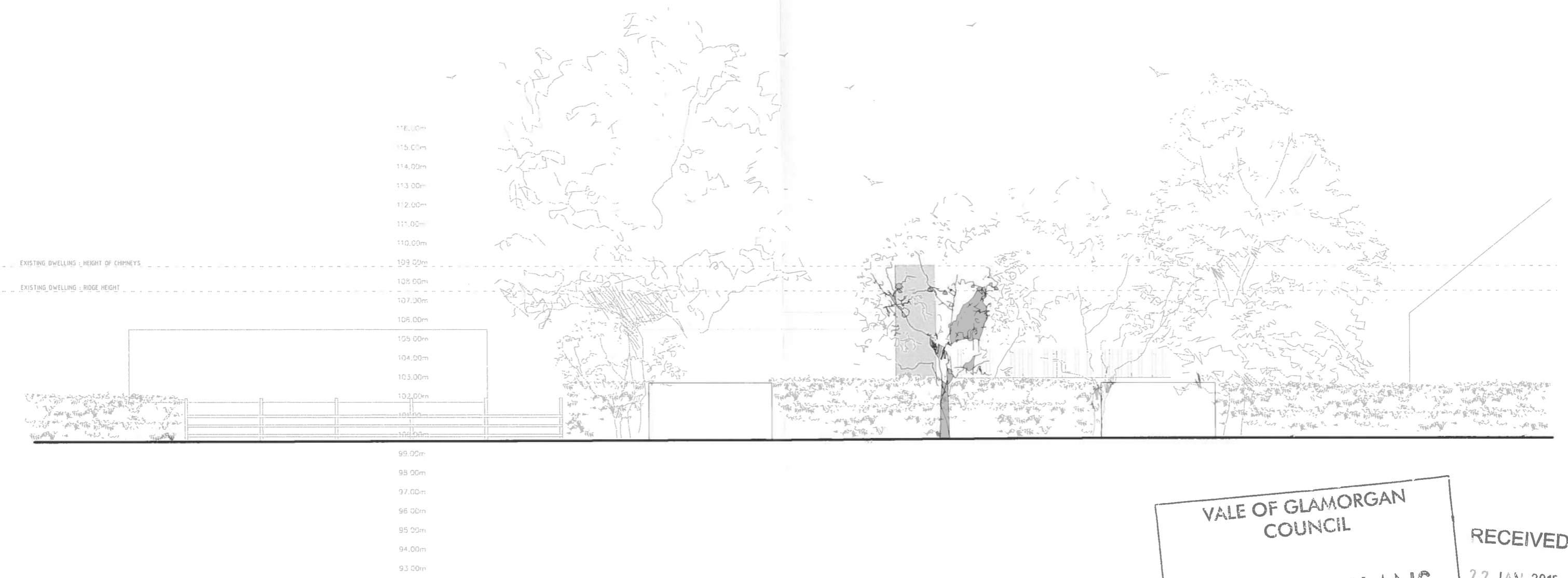


14/01355 /rvl

THE VALE OF  
GLAMORGAN COUNCIL  
TOWN AND COUNTRY PLANNING ACT 1990  
**APPROVED**  
SUBJECT TO COMPLIANCE WITH CONDITIONS (IF ANY)



VALE OF GLAMORGAN  
COUNCIL

**AMENDED PLANS**

RECEIVED Date.....

RECEIVED  
22 JAN 2015  
ENVIRONMENTAL  
AND ECONOMIC  
REGENERATION

REVISIONS  
(21/01/15)  
i Revisions in line with local authority  
planning requirements

- MATERIALS**
- A. EXTERNAL WALLS Through colour render
  - B. WINDOWS & DOORS Polyester powder coated aluminum frames (colour to be confirmed)
  - C. EXTERNAL DOORS Anodised aluminum panels
  - D. BALUSTRADING Metal fins
  - E. LIFT SHAFT / STAIRCORE Glazing
  - F. SLOT WINDOWS As B with anodised aluminum fins



PROJECT  
NEW DWELLING AT 12 PARK ROAD

THE SCHEME  
WEST ELEVATION IN CONTEXT

DATE  
1:200 @ A3 DRAWN BY  
JAN 15 08 14-21/S11A

DESIGNED BY  
 PRELIMINARY  APPROVED  APPROVED  PLANNED 
 TRACED  IN USE  FOR SALE  FOR SALE

LOYN & CO ARCHITECTS  
 11 WESTERN ROAD, PENYDAR, VALE OF GLAMORGAN, CF34 1JL  
 TEL: 01446 247473 FAX: 01446 247474 EMAIL: info@loyn.co.uk