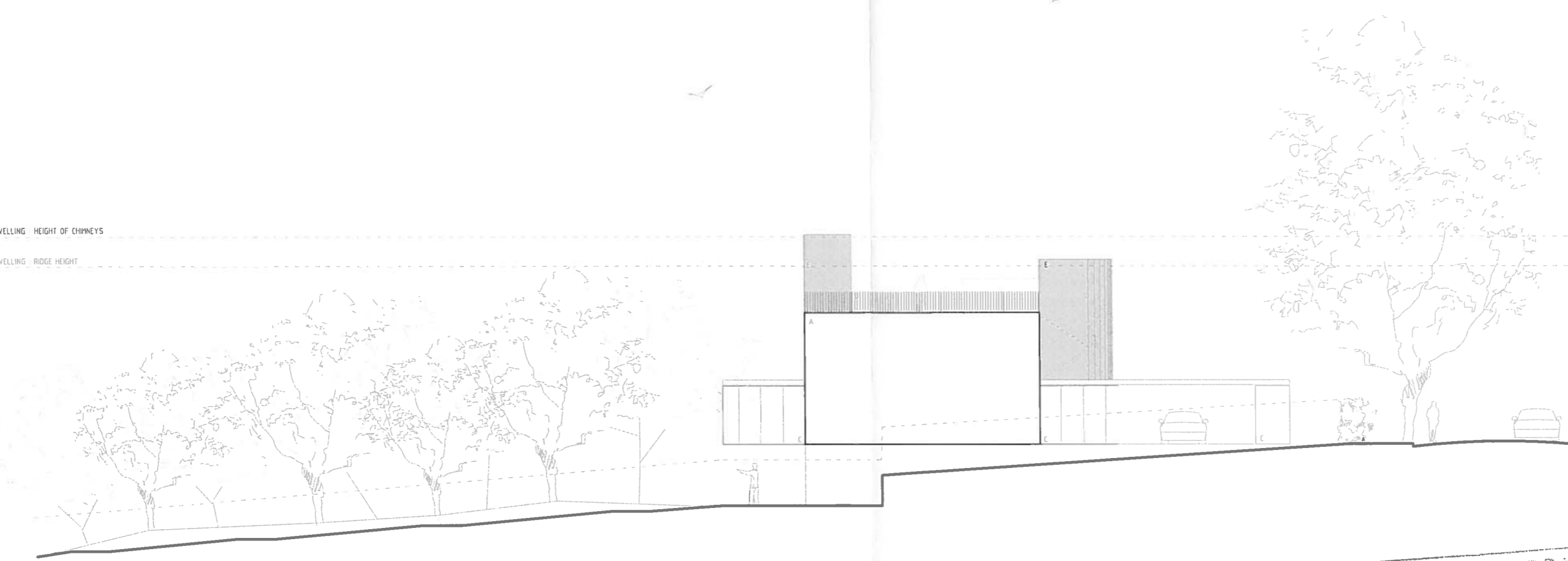


14/01355/FVL

**THE VALE OF
GLAMORGAN COUNCIL**
TOWN AND COUNTRY PLANNING ACT 1990
APPROVED
SUBJECT TO COMPLIANCE WITH CONDITIONS (IF ANY)

EXISTING DWELLING HEIGHT OF CHIMNEYS

EXISTING DWELLING RIDGE HEIGHT



115.00m
114.00m
113.00m
112.00m
111.00m
110.00m
109.00m
108.00m
107.00m
106.00m
105.00m
104.00m
103.00m
102.00m
101.00m
100.00m
99.00m
98.00m
97.00m
96.00m
95.00m
94.00m
93.00m

VALE OF GLAMORGAN
COUNCIL

AMENDED PLANS

RECEIVED Date.....

RECEIVED
22 JAN 2015
ENVIRONMENTAL
AND ECONOMIC
REGENERATION

REVISIONS:
(21.01.15)
i Revisions in line with local authority
planning requirements

MATERIALS

- A. EXTERNAL WALLS Through colour render
- B. WINDOWS & DOORS Polyester powder coated aluminum frames (colour to be confirmed)
- C. EXTERNAL DOORS Anodised aluminum panels
- D. BALUSTRADING Metal fins
- E. LIFT SHAFT / STAIRCORE Glazing
- F. SLOT WINDOWS As B with anodised aluminum fins



PROJ. NO. 1421/S12A

NEW DWELLING AT 12 PARK ROAD

SCHEME NORTH ELEVATION WITHIN SITE BOUNDARY

DATE: 15 JAN 15 08:14

LOYN & CO ARCHITECTS