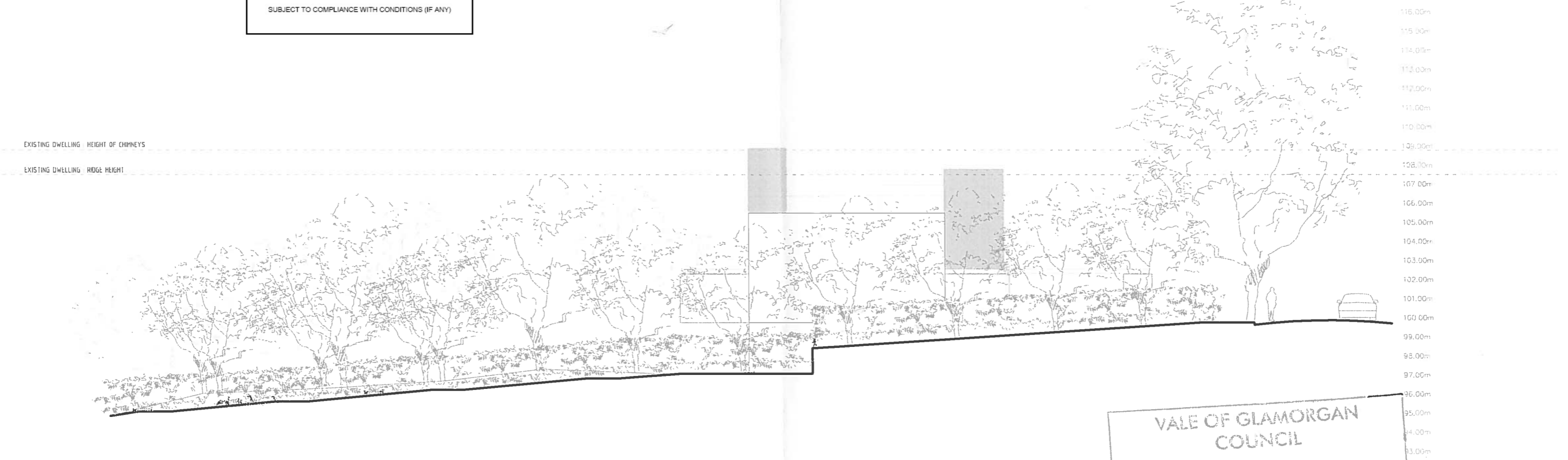


14/01355/KUL

THE VALE OF  
GLAMORGAN COUNCIL  
TOWN AND COUNTRY PLANNING ACT 1990  
**APPROVED**  
SUBJECT TO COMPLIANCE WITH CONDITIONS (IF ANY)



VALE OF GLAMORGAN  
COUNCIL  
**AMENDED PLANS**  
RECEIVED Date.....

RECEIVED  
22 JAN 2015  
ENVIRONMENTAL  
AND ECONOMIC  
REGENERATION

REVISIONS  
(21.01.15)  
1. Revisions in line with local authority  
planning requirements

- MATERIALS
- A. EXTERNAL WALLS. Through colour render
  - B. WINDOWS & DOORS. Polyester powder coated aluminum frames (colour: to be confirmed)
  - C. EXTERNAL DOORS. Anodised aluminum panels
  - D. BALUSTRADING. Metal fins
  - E. LIFT SHAFT / STAIRCORE. Glazing
  - F. SLOT WINDOWS. As B with anodised aluminum fins



PROJECT: NEW DWELLING AT 12 PARK ROAD

PLANNING SCHEME: NORTH ELEVATION IN CONTEXT

SCALE: 1:200 @ A3  
DATE: 15 JAN 15  
DRAWING NO: 1421/S13 A

DESIGNED BY: [ ] CHECKED BY: [ ] APPROVED BY: [ ] DRAWN BY: [ ]

LOYN & CO ARCHITECTS  
10 WILTON ROAD, PENARTH, VALE OF GLAMORGAN, CYMRU  
TEL: 01495 347413 FAX: 01495 347414