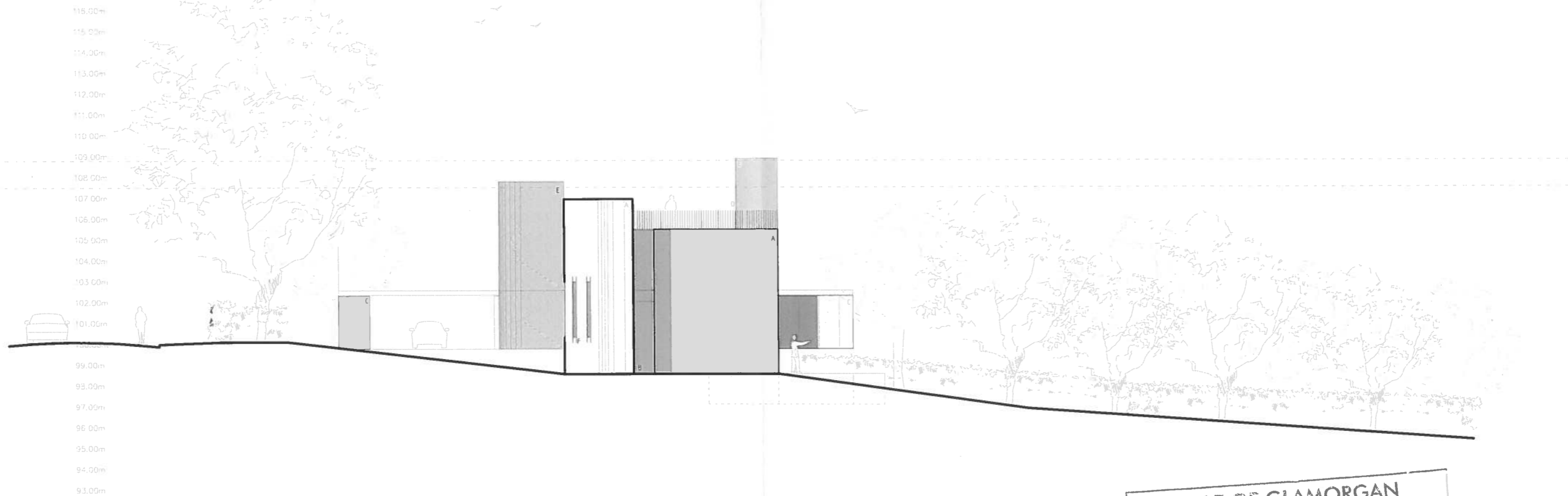


14/01355/FU

THE VALE OF  
GLAMORGAN COUNCIL  
TOWN AND COUNTRY PLANNING ACT 1990  
**APPROVED**  
SUBJECT TO COMPLIANCE WITH CONDITIONS (IF ANY)



VALE OF GLAMORGAN  
COUNCIL

**AMENDED PLANS**

RECEIVED Date.....

RECEIVED  
22 JAN 2015  
ENVIRONMENTAL  
AND ECONOMIC  
REGENERATION

REVISIONS  
(21/01/15)  
i Revisions in line with local authority  
planning requirements

- MATERIALS
- A. EXTERNAL WALLS. Through colour render
  - B. WINDOWS & DOORS. Polyester powder coated aluminum frames (colour to be confirmed)
  - C. EXTERNAL DOORS. Anodised aluminum panels
  - D. BALUSTRADING. Metal fins
  - E. LIFT SHAFT / STAIRCORE. Glazing
  - F. SLOT WINDOWS. As B with anodised aluminum fins

PROJECT  
NEW DWELLING AT 12 PARK ROAD

SCHEME  
SOUTH ELEVATION IN CONTEXT

DATE  
200 @ A3  
JAN 15 1421/S15A

LOYN & CO ARCHITECTS

