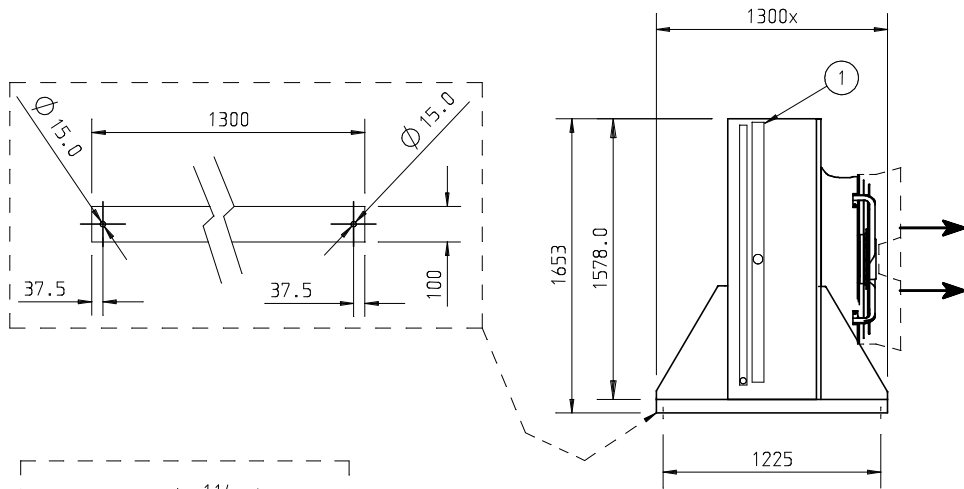


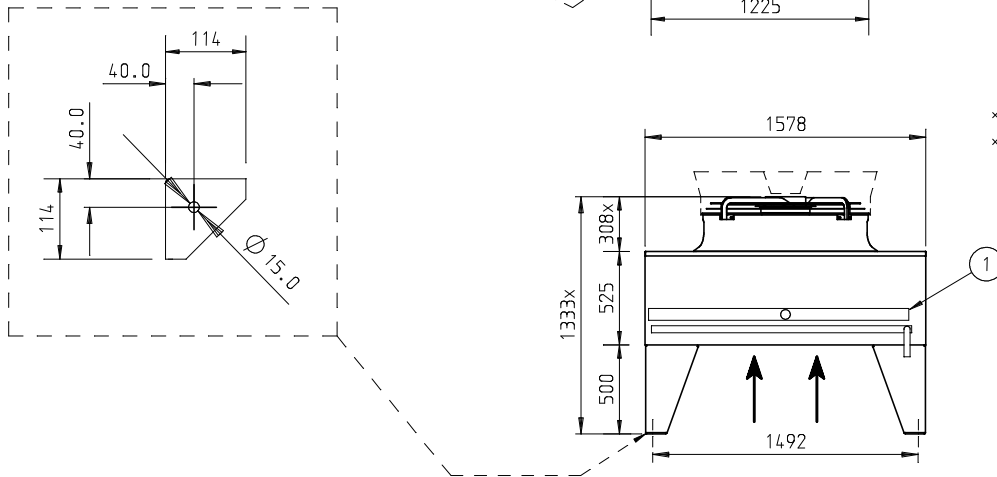
27/08/2014

Specification

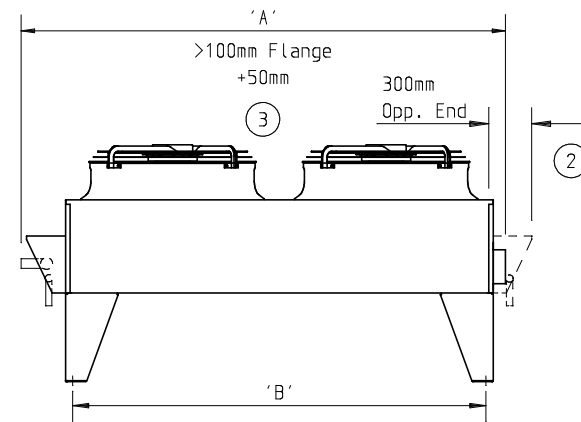
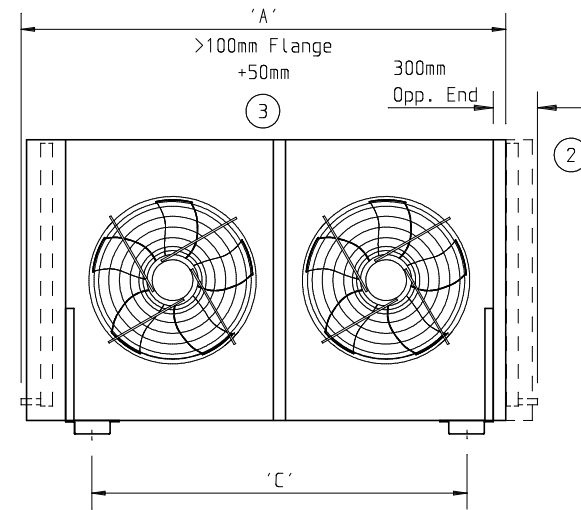
	SI	RF-ND102L3H-091E360
Total Heat of Rejection	kW	58.0
Ambient Temperature	°C	35.0
Condensing Temperature	°C	43.4
Actual TD	K	8.4
Dew or Mid Point		Dew
Hot Gas Inlet Temperature	°C	68.0
Refrigerant		R404A
Sound Pressure Level	dB(A)	25 @ 10 m
Mean Sound Pressure Level	dB(A)	27 @ 10 m
Sound Power Level	dB(A)	59
Sound Spectrum 125 Hz	dB	56
Sound Spectrum 250 Hz	dB	56
Sound Spectrum 500 Hz	dB	56
Sound Spectrum 1 kHz	dB	56
Sound Spectrum 2 kHz	dB	49
Sound Spectrum 4 kHz	dB	44
Sound Spectrum 8 kHz	dB	37
Tube/Fin Material		CU/AV
Surface Area	m ²	368.0
Subcooling Section		Nominal 7K at 15K ΔT
Degrees of Subcooling	K	3.1
Connections		Same End
Inlet Connection Size	OD	2-5/8"
Outlet Connection Size	OD	1-5/8"
Subcooling Connections		To be confirmed
Subcooling Inlet Connection	OD	1-5/8"
Subcooling Outlet Connection	OD	1-5/8"
Orientation		Horizontal
Air Discharge Direction		Vertical
Refrigerant Charge	kg	25
Altitude	m	0
Air Volume	m ³ /s	5.80
Internal Volume	l	60
Input Power (Total)	kW	0.310
Energy Rating		A++
Fan Speed	rpm	360
Electrical Supply		400-3-50/60
Rows of Fans		1
Fans per Row		2
Starting Current (per fan)	A	1.04 (4.55 max)
Full Load Current (per fan)	A	0.8 (3.5 max)
Overall Length	mm	4523
Overall Width	mm	1578
Overall Height	mm	1333
Dry Weight	kg	520
Part Number		RF-ND102L3H-091E360-SC7-AV



*Axitop +74.5mm
*ZA Plus +0mm



*Axitop +140mm
*ZA Plus +0mm

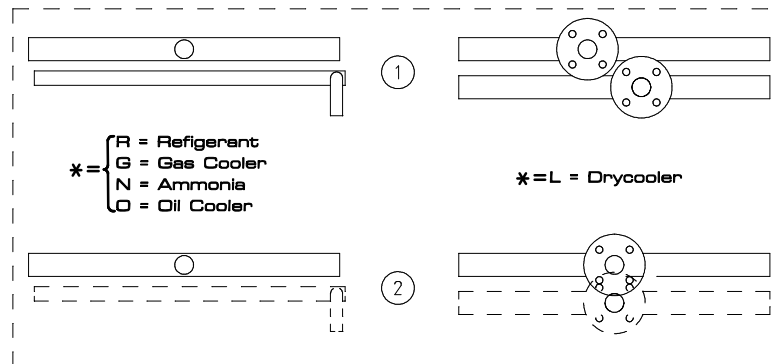


PROVISIONAL

PROVISOIRE

VORLÄUFIG

DIM	*F-NA	*F-NB	*F-NC	*F-ND
'A'	2723	3323	3923	4523
'B'	2323	2923	3523	4123
'C'	2109	2709	3309	3909



English / Français / Deutsch

2 Opposite End Connections

2 Entrée et sortie
côtés opposés

Gegeneberliegender
Anschlüsse

3 Flange

3 Bride

3 Flansch

*F-Nx102