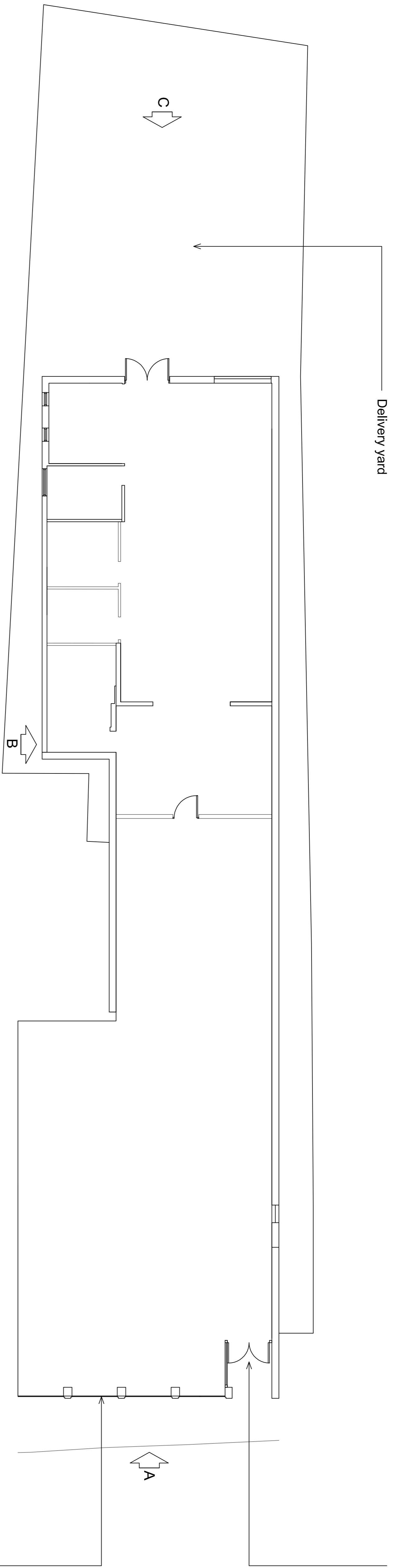


REVISION



Manual entrance/exit doors,  
finish: white

Shopfront windows, finish: white

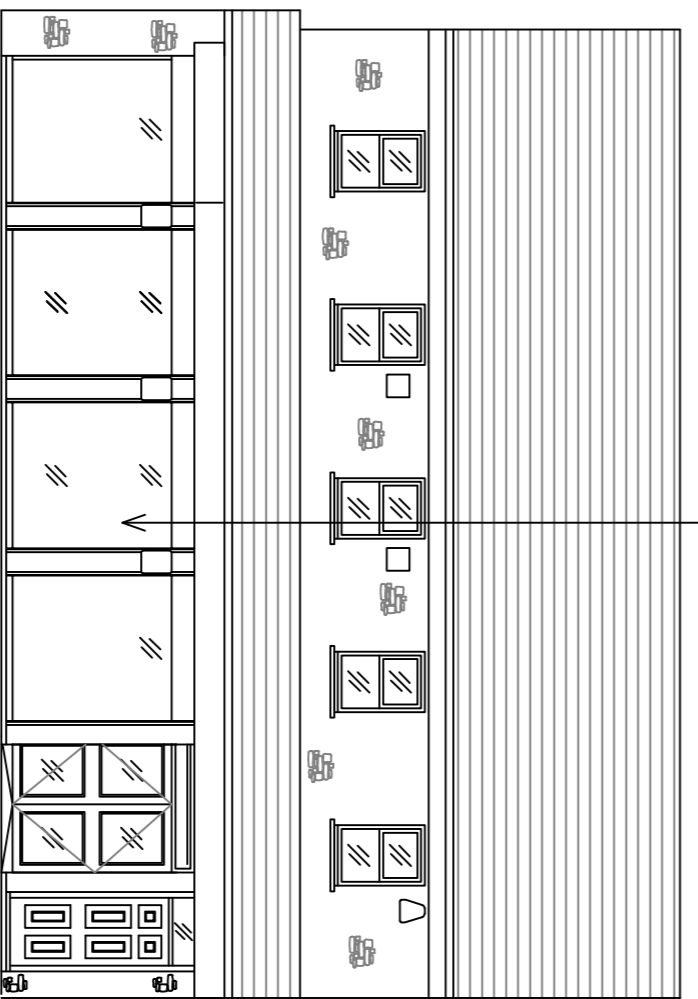
Ground floor plan

THE VALE OF  
GLAMORGAN COUNCIL  
TOWN AND COUNTRY PLANNING ACT 1990  
**APPROVED**  
SUBJECT TO COMPLIANCE WITH CONDITIONS (IF ANY)

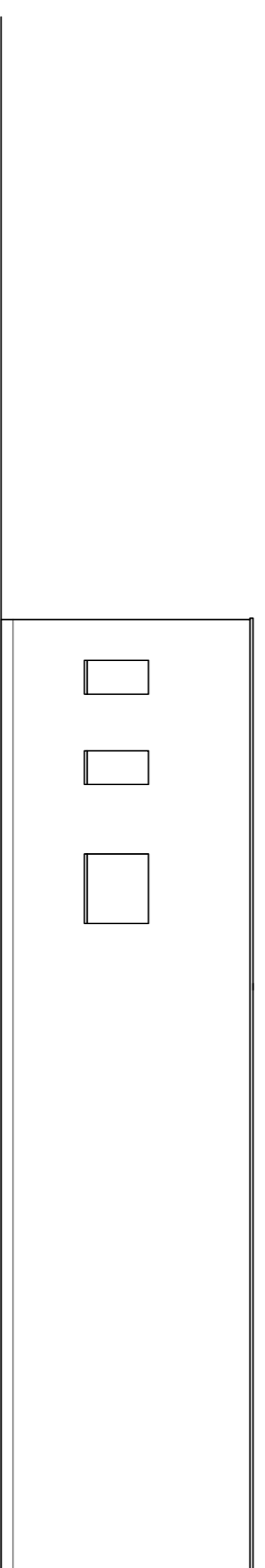
Manual entrance/exit doors and shopfront windows  
on front elevation, finish: white

Timber louvre

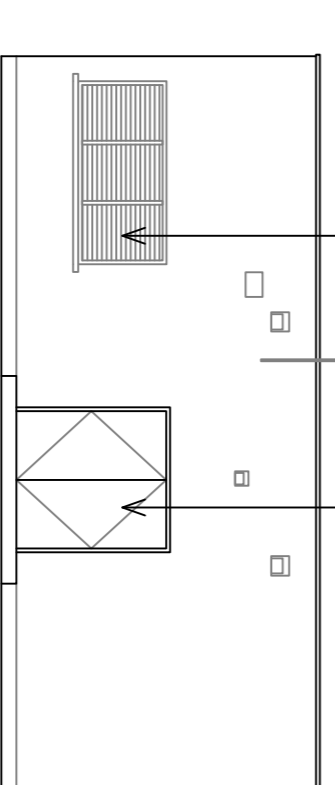
Steel clad timber warehouse doors



Elevation A



Elevation B



Elevation C

© THE CONTENTS OF THIS DRAWING REMAIN THE SOLE PROPERTY OF WELLSFIELD ASSOCIATES AND MUST NOT BE COPIED OR REPRODUCED WITHOUT PRIOR PERMISSION.

FULL SURVEY NOT CARRIED OUT. DRAWING PRODUCED USING INFORMATION SUPPLIED BY THE CLIENT

**Wellsfield Associates**

80, High Street,  
Faversham,  
SS7 2PB  
Tel: 01702 551123  
Fax: 01702 558530  
mail@wellsfieldassociates.co.uk

project  
Retail Store  
57 High Street  
Cowbridge  
Wales  
CF71 7AF

EXISTING DETAILS

date Oct '14 drawn DAR  
scale 1:100@A1 drg no. 2624.02

EXISTING DETAILS

