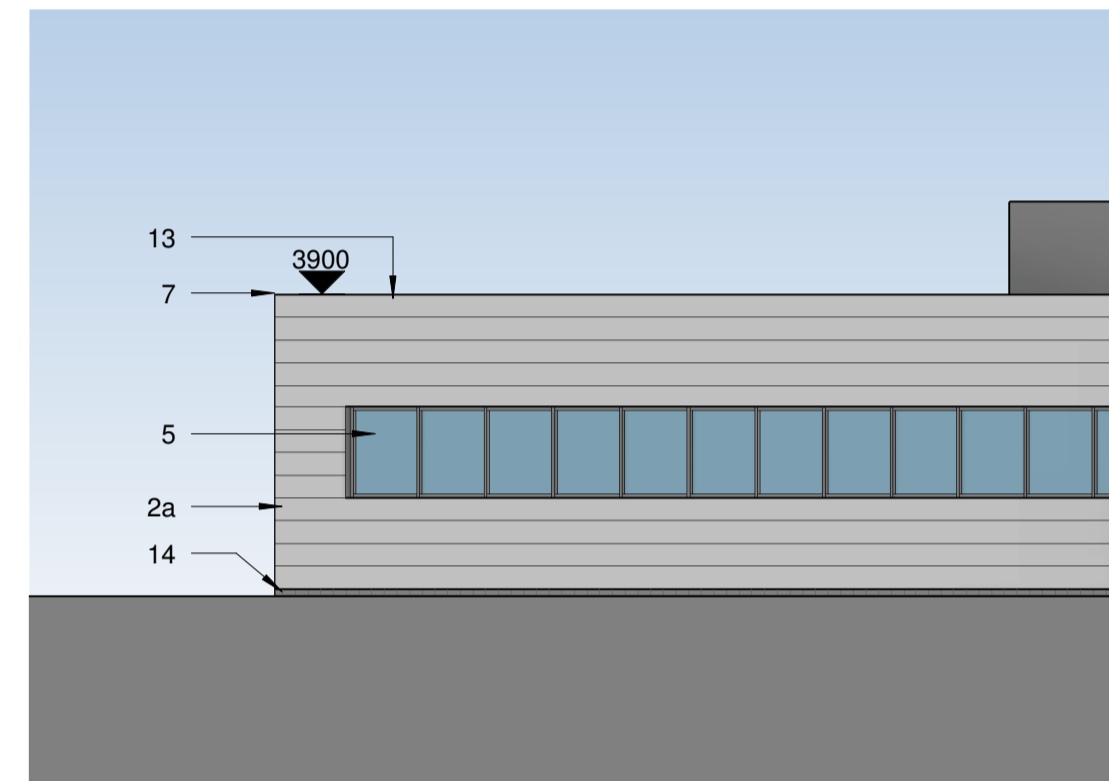
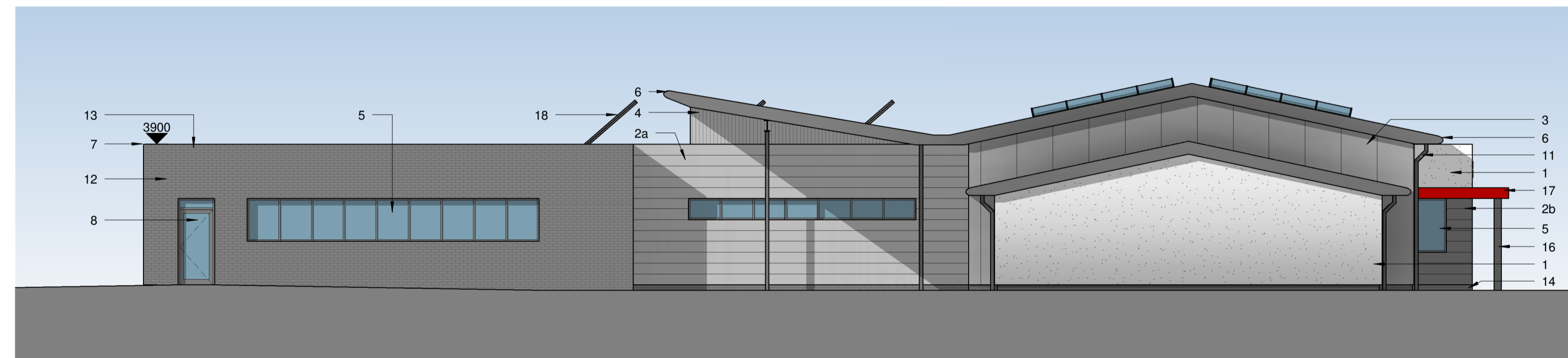
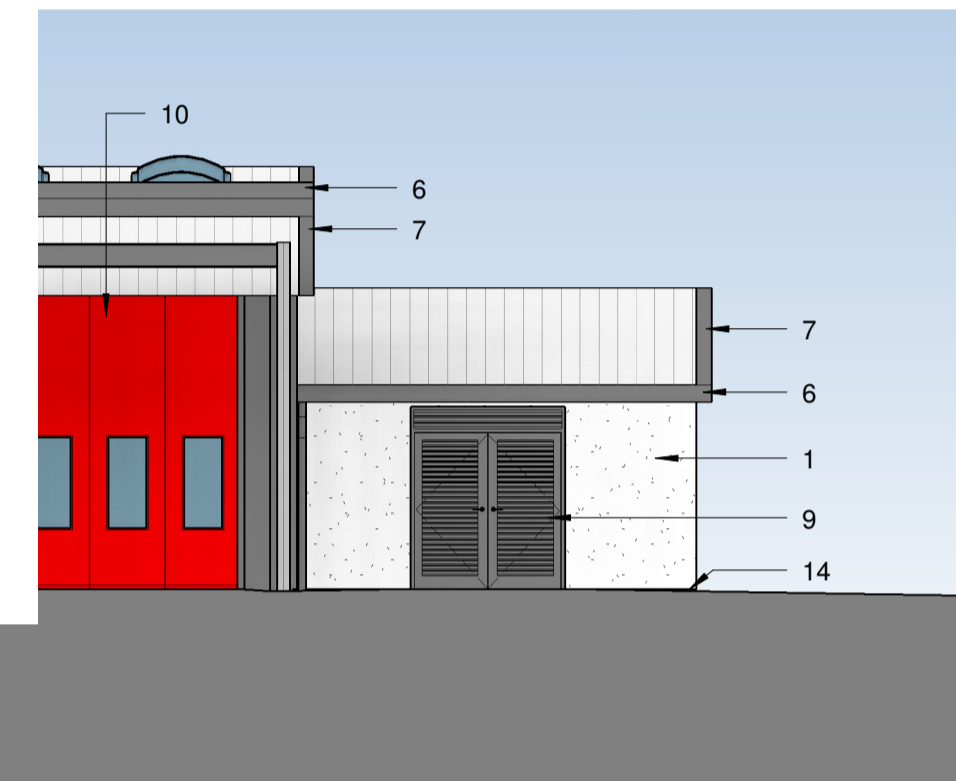


Proposed North Elevation
1 : 100

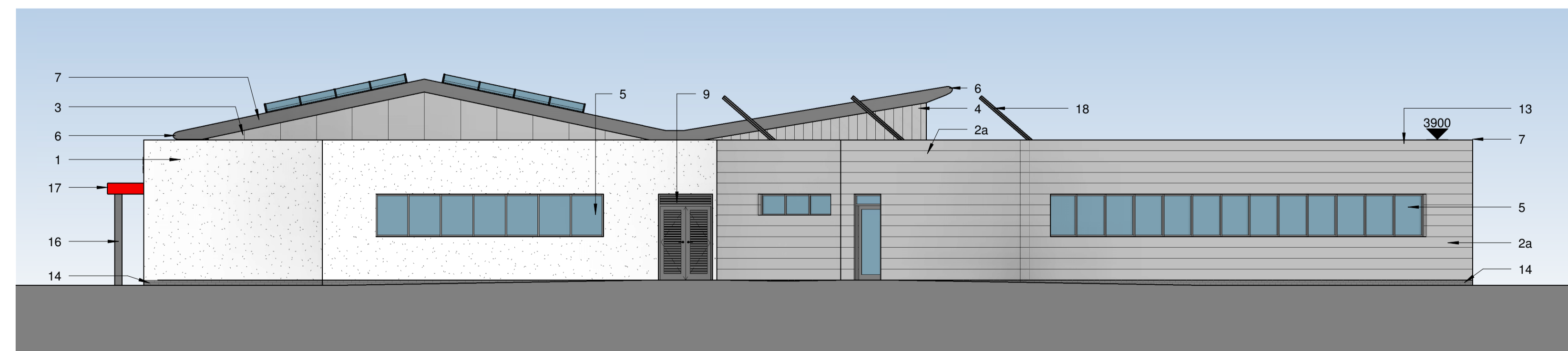


Proposed South Elevation
1 : 100

THE VALE OF GLAMORGAN COUNCIL
SUPERSEDED



Proposed East Elevation
1 : 100



Proposed West Elevation
1 : 100

ALL DIMENSIONS TO BE CHECKED ON SITE.
DO NOT SCALE THIS DRAWING.
ALL DISCREPANCIES TO BE REPORTED IMMEDIATELY.
© COPYRIGHT

NOTES:

- 1 - Water repellent painted proprietary cement render finished over existing/ proposed cavity wall.
Colour: White
- 2 - Trepsa cladding panel on timber frame over existing/ proposed cavity wall.
2a Colour: Light Grey
2b Colour: Dark Grey
- 3 - Vertical Kingspan composite cladding
Colour: Light Grey
- 4 - Vertical profiled cladding (non-insulated)
Colour: Light grey
- 5 - Powder coated aluminium double glazed system.
Colour: Dark Grey
- 6 - Powder coated aluminium bullnose profile with concealed gutter.
Colour: Dark Grey
- 7 - Powder coated aluminium verge, soffit & coping.
Colour: Dark Grey/Light Grey
- 8 - Powder coated aluminium door system.
Colour: Dark Grey
- 9 - Powder coated steel louvre door system.
Colour: Dark Grey
- 10 - New/ upgrade insulated appliance bay doors.
Colour: Red
- 11 - Powder coated aluminium downpipes.
Colour: Dark Grey
- 12 - Charcoal coloured polished brickwork.
- 13 - Bitumen felt roofing system to flat roof area.
- 14 - Painted existing brickwork/ steelwork.
Colour: Dark Grey
- 15 - Stainless steel signage (Welsh translation to be checked).
- 16 - PPC steel posts to support entrance canopy.
Colour: Dark Grey
- 17 - Powder coated aluminium canopy profile.
Colour: Red
- 18 - Photovoltaics and solar panels

No.	Revision Description	Date	By
-----	----------------------	------	----

CLIENT
SOUTH WALES FIRE & RESCUE SERVICE



PROJECT
PENARTH FIRE STATION

TITLE
PROPOSED ELEVATIONS

Drawn : JM Date : 11/08/14 Checked : MP
Scale : Original sheet size :
1 : 100 A1

- DRAWING STATUS
- Design Development
 - Tender
 - Design Development Pre-Construction
 - Construction
 - Record

Project No Dwg No Revision
10323 2003