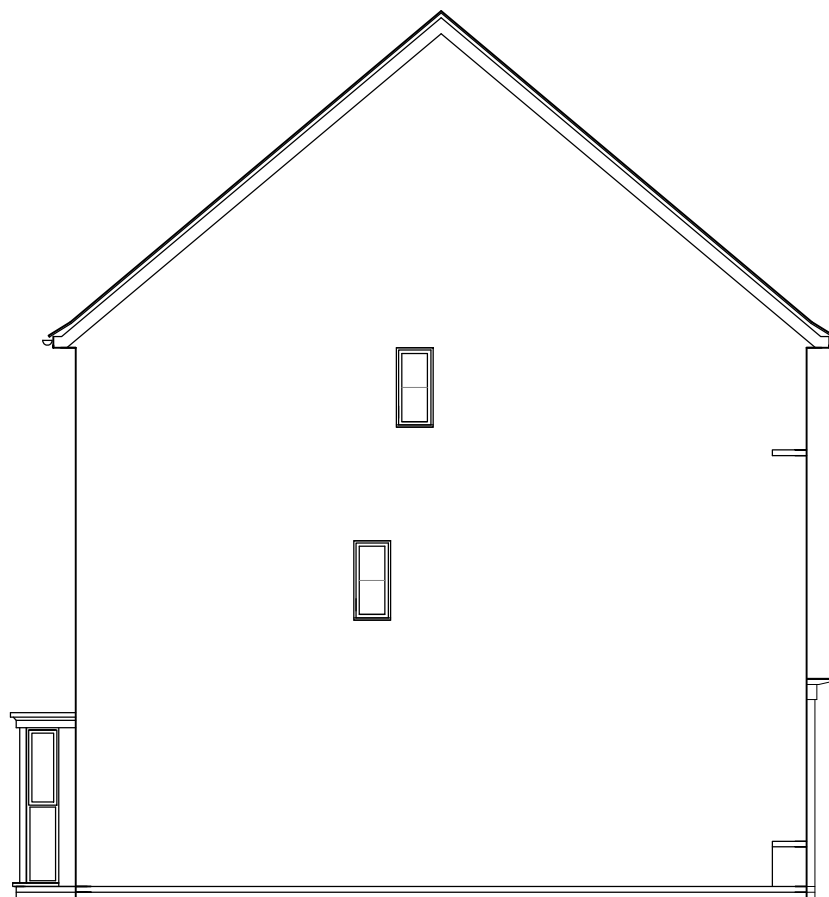
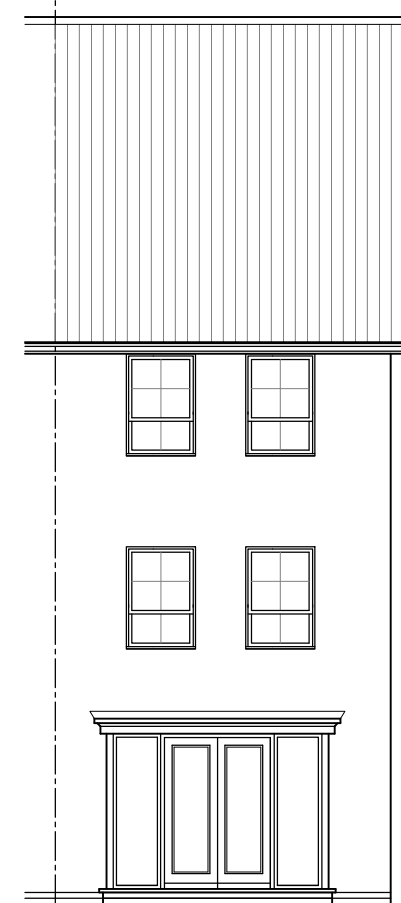


FRONT ELEVATION

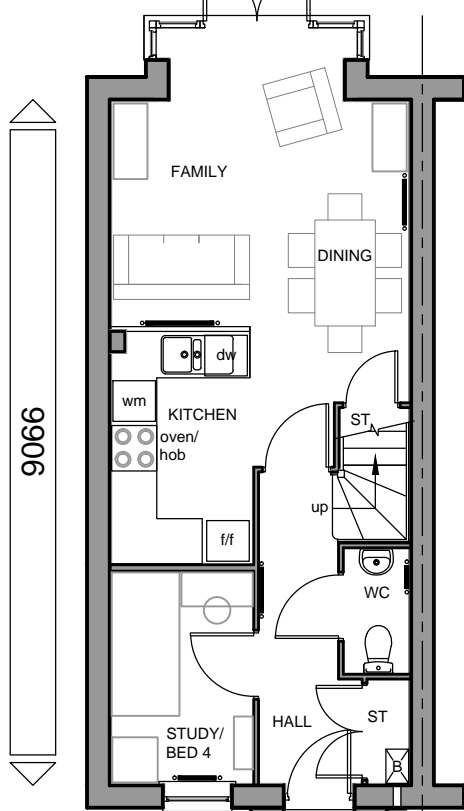


SIDE ELEVATION

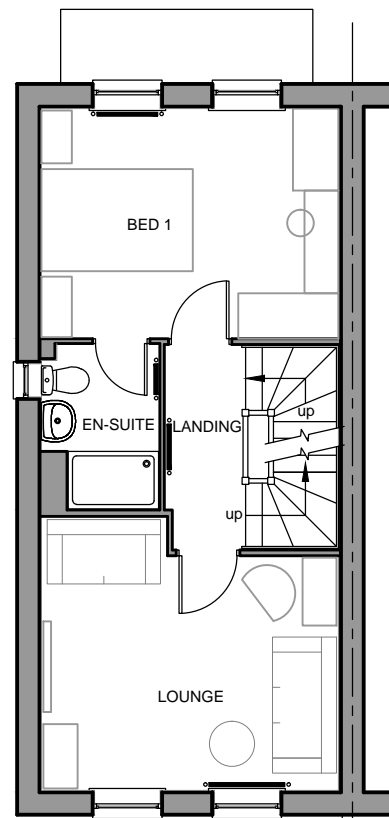


REAR ELEVATION

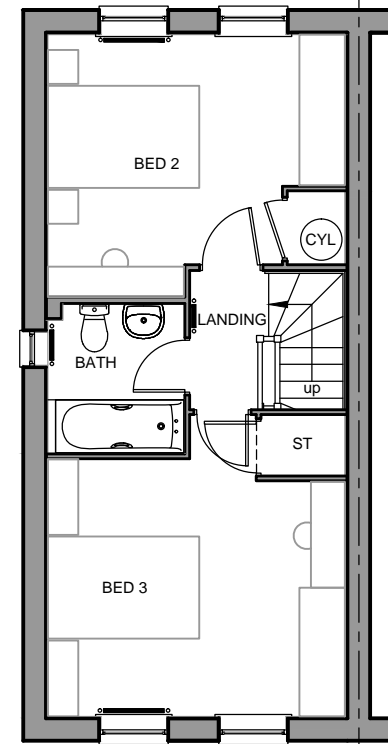
3988



GROUND FLOOR PLAN



FIRST FLOOR PLAN



SECOND FLOOR PLAN

9066

THE VALE OF GLAMORGAN COUNCIL
SUPERSEDED

EMBASSY RANGE
FLOOR AREA - 1194sqft/110.9m²



BARRATT
DEVELOPMENTS PLC

Group Design & Technical Department
Barratt House
City West Business Park
Scotswood Road
NEWCASTLE UPON TYNE
NE4 7DF

Tel: 0191 298 6100
Fax: 0191 256 8324

House Type Code

BFAV 00CE (End)
BFAV 00CI (Mid)
BFAV 00CS (Semi)

2010 Range - The Faversham

WARNING TO HOUSE-PURCHASERS. Property Misdescriptions Act 1991
Buyers are warned that this is a working drawing and the contents of this drawing may be subject to change at any time and alterations and variations can occur during the progress of the works build process. As such the layout, form, content and dimensions of the finished construction may differ materially from those shown. Whilst we make every effort to ensure our drawings are up to date there may from time to time be an unavoidable delay in updating these due to changes in regulations and/or re-planning. Purchasers are advised to check with the Sales Adviser whether any alterations have been made to this drawing. The contents of this drawing do not constitute a contract, part of any contract or warranty.

PLANNING DRAWING - CLASSIC

Date	2010
Drawn by	GDT
Checked by	GDT
Revision	E

2010/FAV/C/01
EMBASSY RANGE

Scale 1 : 100 @ A3