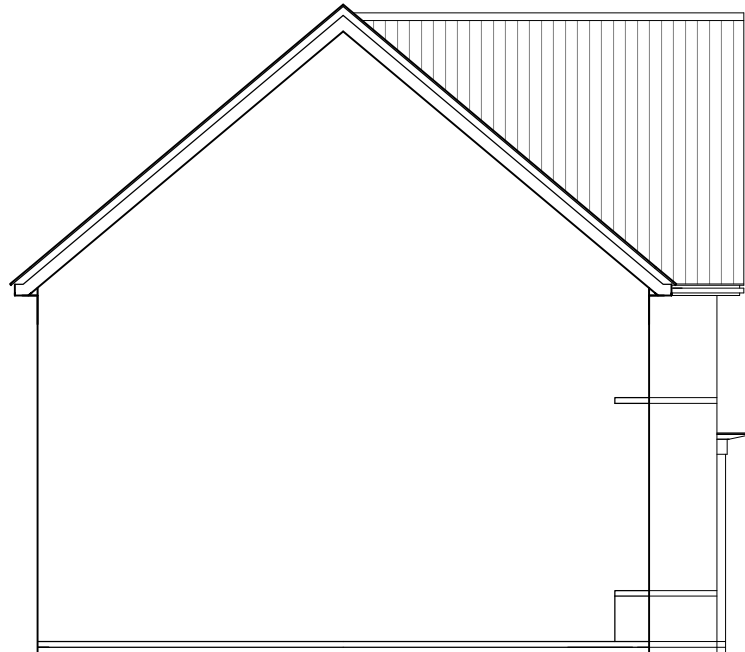




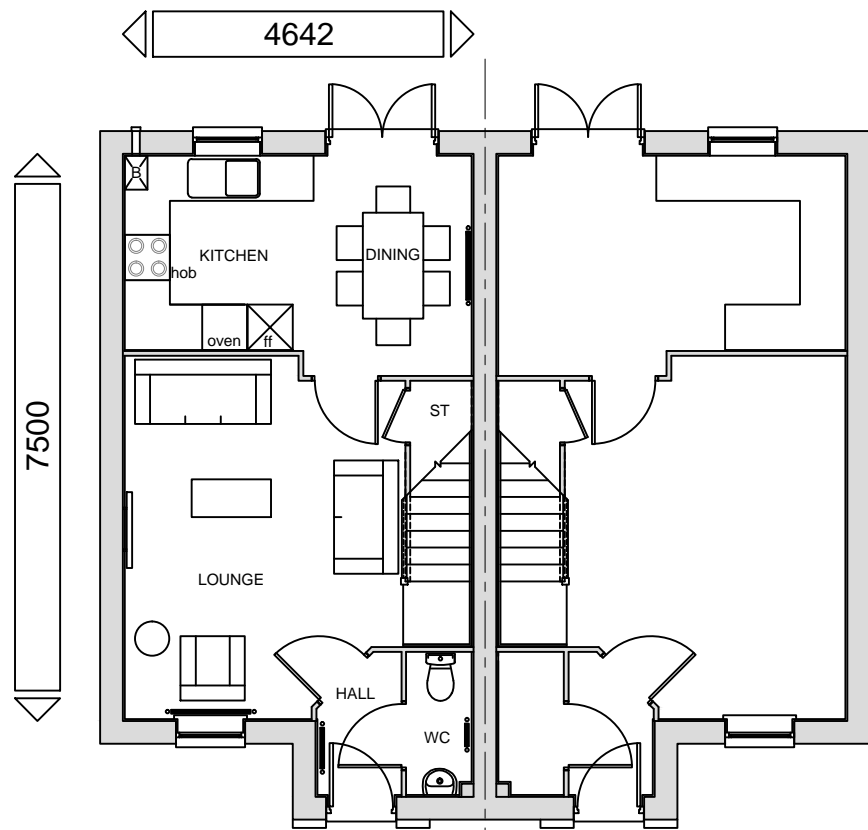
FRONT ELEVATION



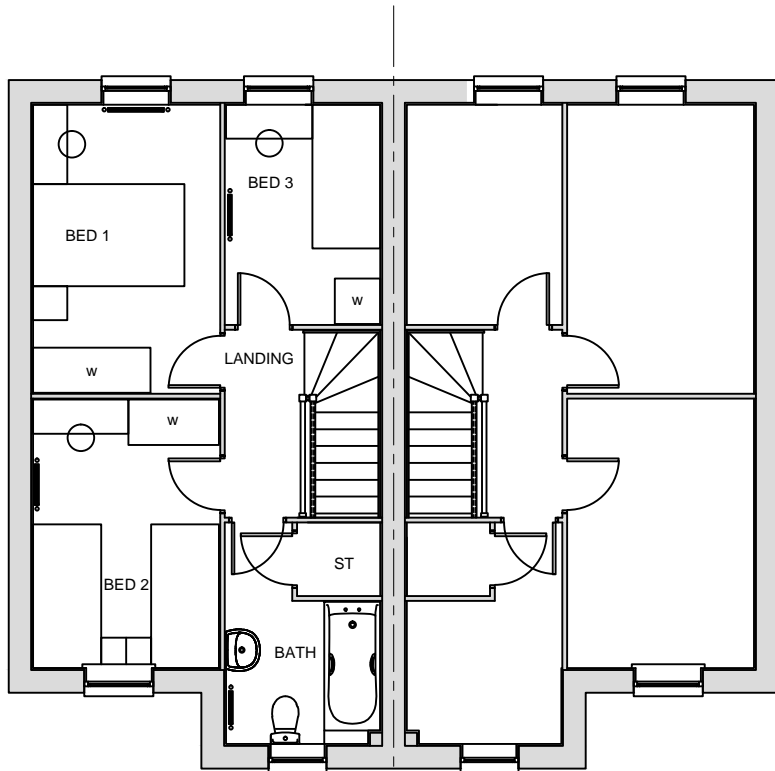
SIDE ELEVATION



REAR ELEVATION




GROUND FLOOR PLAN



FIRST FLOOR PLAN

STATESMAN RANGE
FLOOR AREA - 795sqft / 73.8m²



BARRATT
DEVELOPMENTS PLC

Group Design & Technical Department
Wilson Bowden House
Forest Business Park
Cartwright Way, Bardon Hill
LEICESTERSHIRE
LE67 1UB
Tel: 01530 276 276

House Type Code

BDWS 00CS
BDWS 0TCE

2010 Range-The Dewsbury (Semi)

WARNING TO HOUSE-PURCHASERS. Property Misdescriptions Act 1991.
Buyers are warned that this is a working drawing and the contents of this drawing may be subject to change at any time and alterations and variations can occur during the progress of the build process. As such the layout, form, content and dimensions of the finished construction may differ materially from those shown. Whilst we make every effort to ensure our drawings are up to date there may from time to time be an unavoidable delay in updating these due to changes in regulations and/or re-planning. Purchasers are advised to check with the Sales Adviser whether any alterations have been made to this drawing. The contents of this drawing do not constitute a contract, part of any contract or warranty.

PLANNING DRAWING - CLASSIC			
Date	JUNE 2011	2010/DWS/C/01 STATESMAN RANGE	
Drawn by	GDT		
Checked by	GDT		
Revision	C	Scale	1 : 100 @ A3