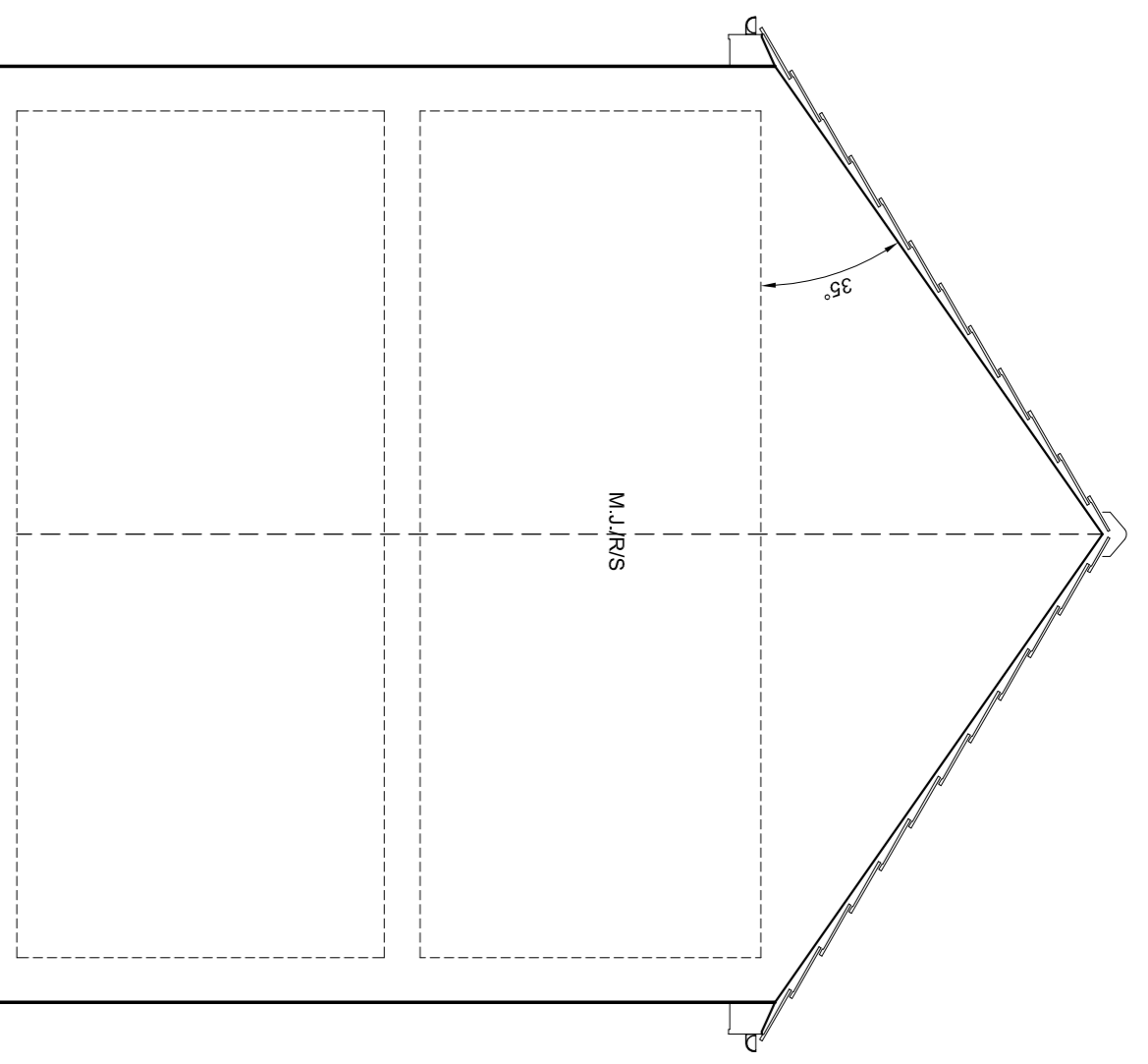


Front Elevation

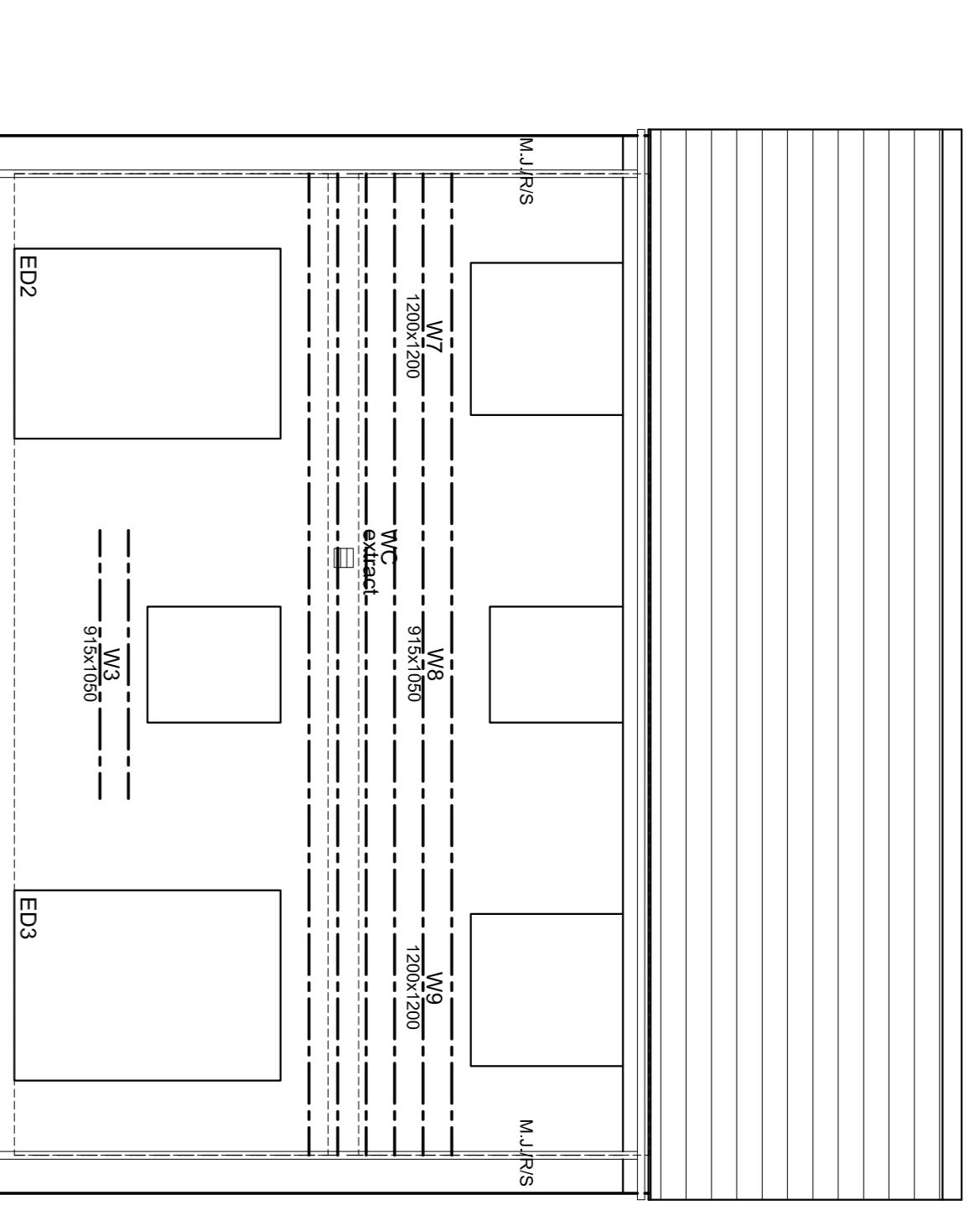
NOTE: Aluminum flue shield should be used if the distance between the boiler flue extract and the RWP is less than 300mm.

NOTE: For bed joint reinforcement, Elevations shown as brick setting out for reinforcement bars. Render/Block Stone units may have to be adjusted for stone covering lengths.

NOTE: For rainwater downpipe locations, refer to this specific drawings.



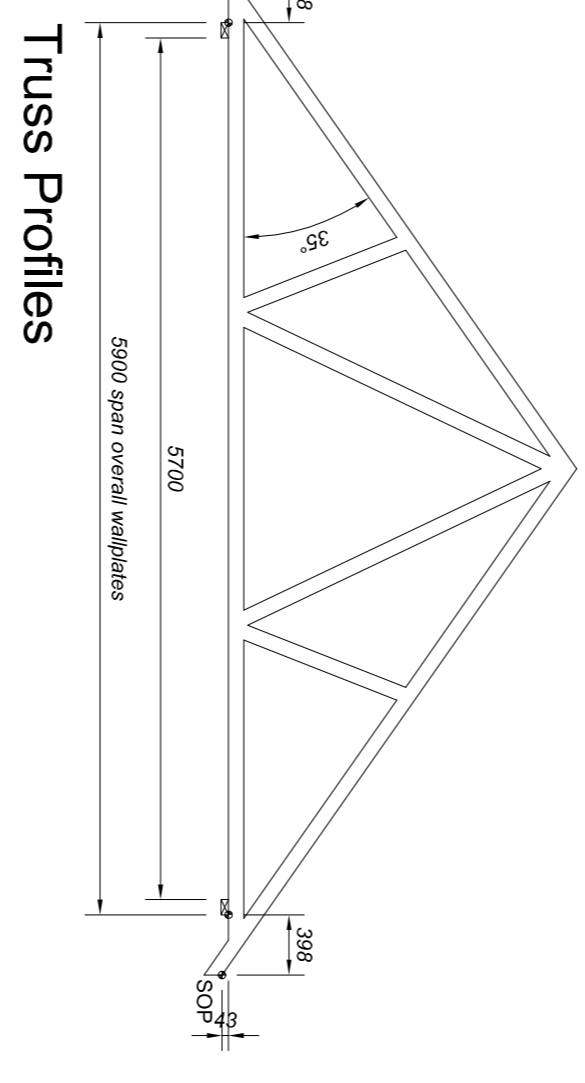
Side Elevation



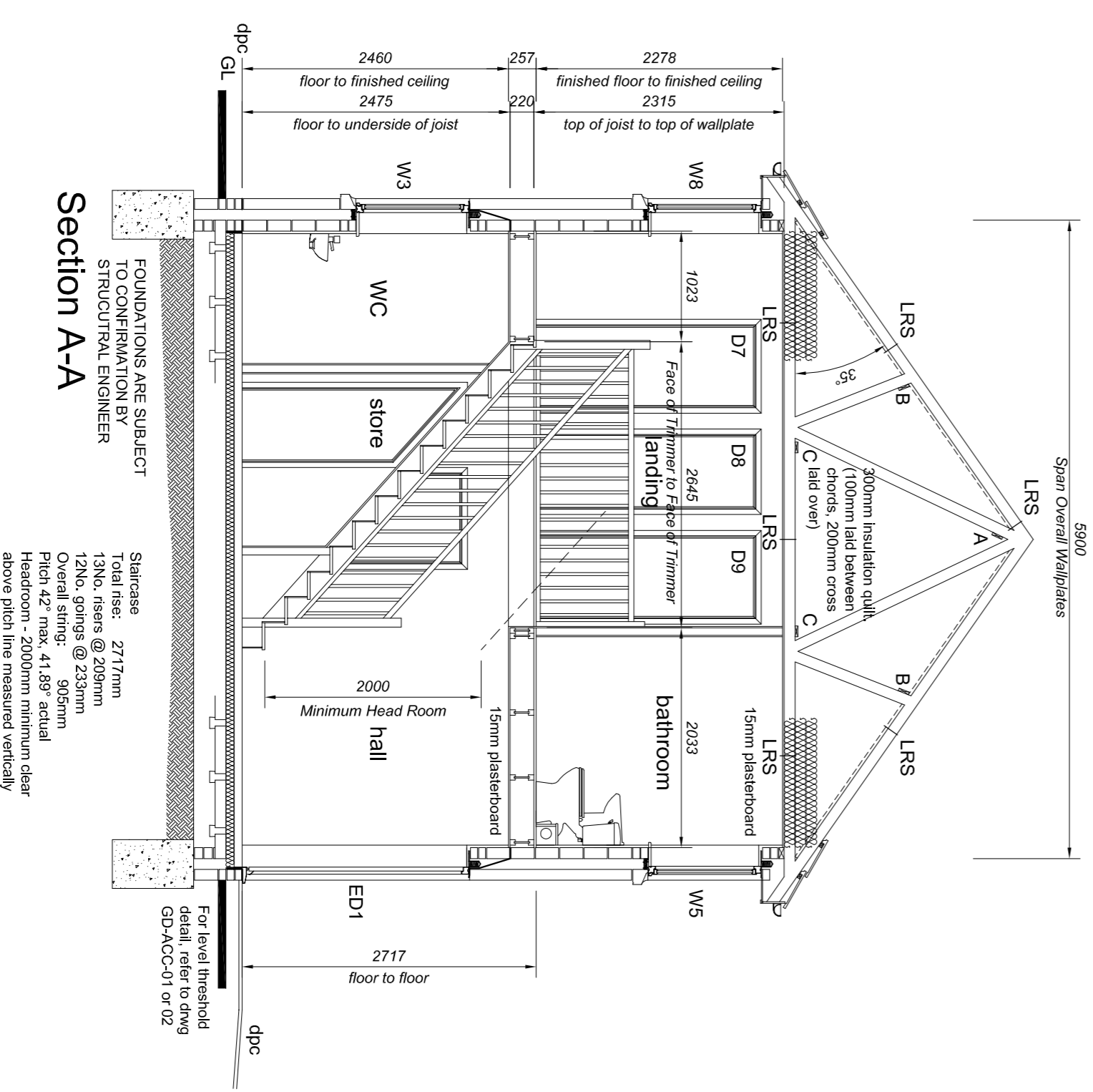
Rear Elevation

NOTE: For bed joint reinforcement, Elevations shown as brick setting out for reinforcement bars. Render/Block Stone units may have to be adjusted for stone covering lengths.

NOTE: For rainwater downpipe locations, refer to this specific drawings.



Truss Profiles



Section A-A

FOUNDATIONS ARE SUBJECT TO CONSTRUCTION BY AN APPROVED CONTRACTOR.

Staircase: 2717mm
Total rise: 2717mm
3300mm rise @ 22mm
1500mm rise @ 22mm
Overall string: @ 950mm
Pitch: 42° max, 41.88° actual
Headroom: 2000mm minimum clear above path (the proposed ceiling)

Drawing Revisions			
ISSUE	DATE	REVISION	BY
A	17/04/09	Carry insulation omitted from Section	LB
B	04/12/09	Door references updated on Section A-A.	AJH
C	03/03/10	Electric meter box to side elevation omitted	AMS

ELEVATION LEGEND

BED JOINT REINFORCEMENT TO SUIT PENETRATION DETAIL

On units with reconstructed stone or Render, finish install 2 rows of Bricks/Block SR750SW80 on top of existing concrete base. The reinforcement should be installed past the structural opening. Refer to the Technical specification for further information.

On units with brick finish install 2 rows of Bricks/Block SR750SW80 bed joint reinforcement at 225mm vertical c/s and extend into 600mm past the structural opening. Refer to the technical specification for further information.

SJ Bed joint around lintel end

SJ Bed joint around head end

M.J.S Movement joint in Block Stone

M.J.R Movement joint in Render

RWP Rainwater pipe

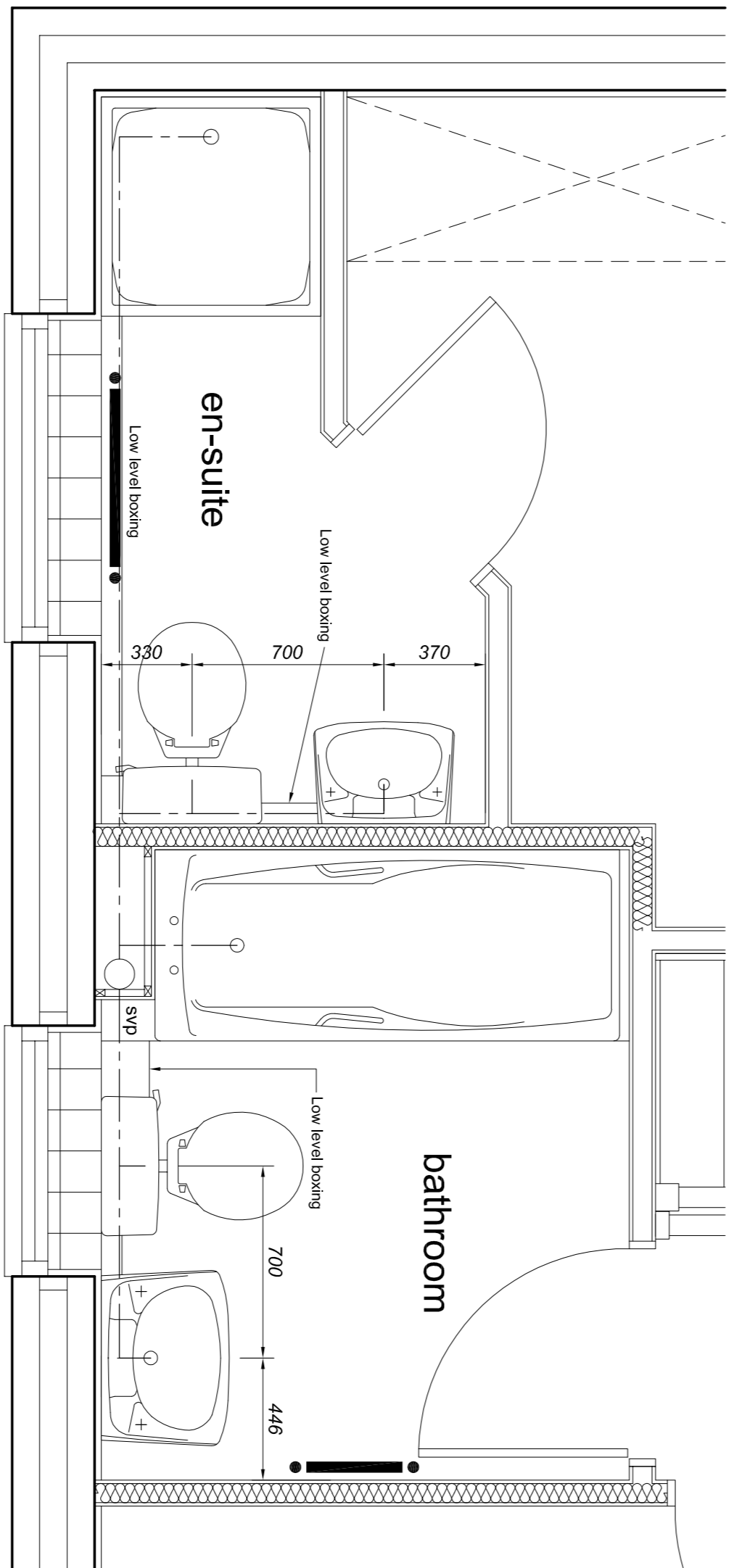
DIRWP Dummy rainwater pipe

**THE VALE OF
GLAMORGAN COUNCIL**

TOWN AND COUNTRY PLANNING ACT 1990

APPROVED

SUBJECT TO COMPLIANCE WITH CONDITIONS (IF ANY)



Plan of En-suite 1:20
Setting out for appliances

PERSIMMON
Together, we make a home

Persimmon Homes South Division
Cedar House,
Swerdley Road,
Malmesbury,
Wiltshire,
SN1 6 9RS
Tel: 01666 824721 Fax: 01666 826152

DRG TITLE: HOUSE TYPE 0950 D.20 ELEV'S, SECTION & BATHROOMS	DRG NO.: 0950DD20-2	REV: C
SCALE: 1:50 @ A1	DRN BY: KIM	
DATE: 10/2007	CRD BY:	

Do Not Scale!
All Dimensions Are In Millimetres Unless Otherwise Stated
If In Doubt Ask!
This plan is drawn as hand/drawing

PROJECT:
STANDARD HOUSE TYPE