

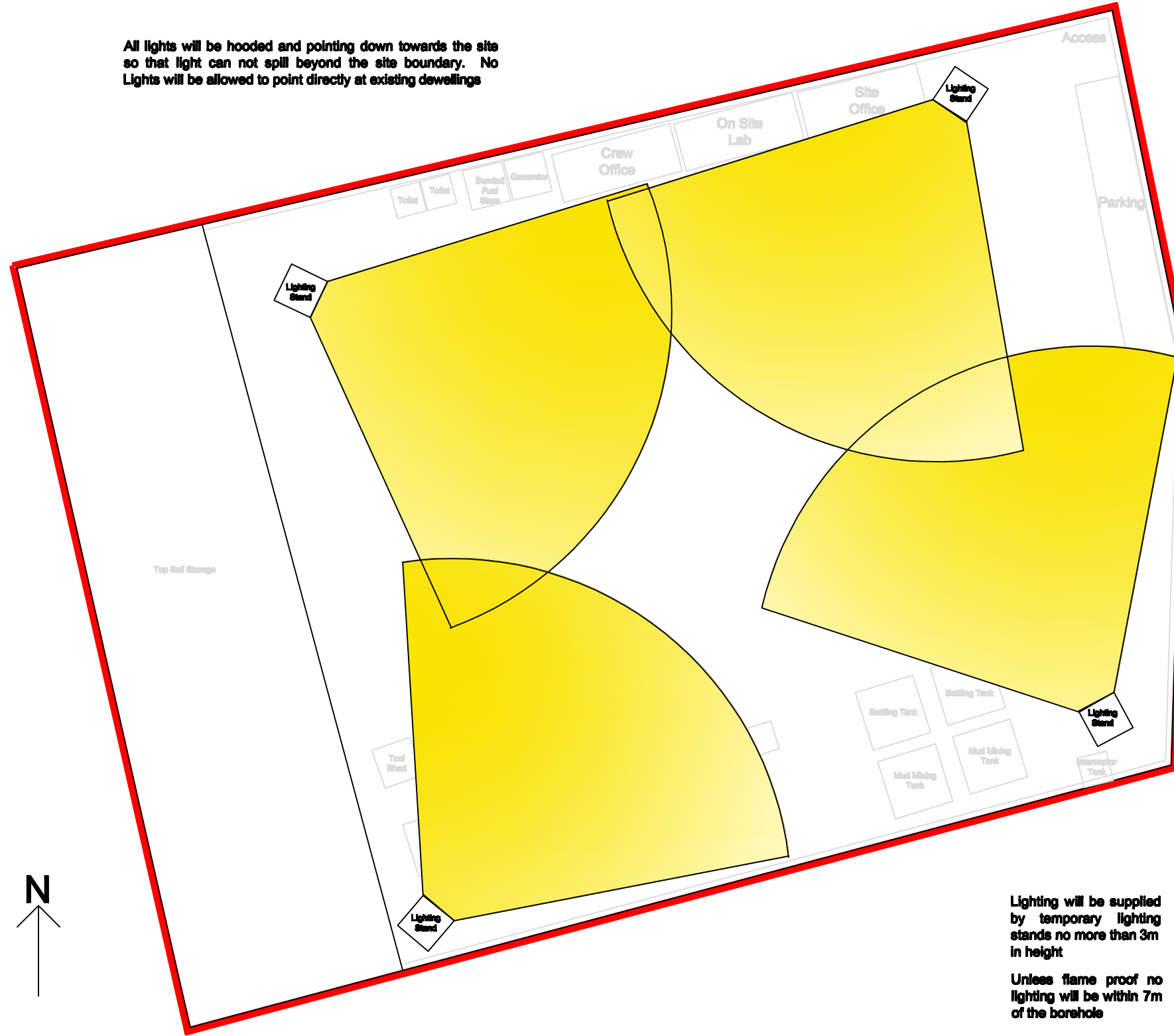
All lights will be hooded and pointing down towards the site so that light can not spill beyond the site boundary. No Lights will be allowed to point directly at existing dwellings

THE VALE OF  
GLAMORGAN COUNCIL

TOWN AND COUNTRY PLANNING ACT 1990

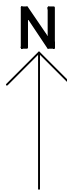
**APPROVED**

SUBJECT TO COMPLIANCE WITH CONDITIONS (IF ANY)



Lighting will be supplied by temporary lighting stands no more than 3m in height

Unless flame proof no lighting will be within 7m of the borehole



Scale in metres  
1:250 when Printed A3

Coastal Oil and Gas Limited 

**Lighting Layout Plan**

© Coastal Oil and Gas 2013

Date: January - 2013

Unit 9  
Brigend Business Centre  
Brigend Industrial Estate  
BRIGEND  
CF31 3BH

Llancarfan Testing

Reference Number:-  
P/13/PL/0001/01 AND P/13/PL/0001/02