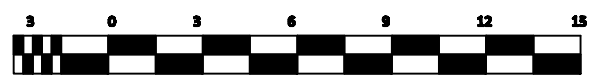
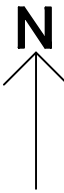
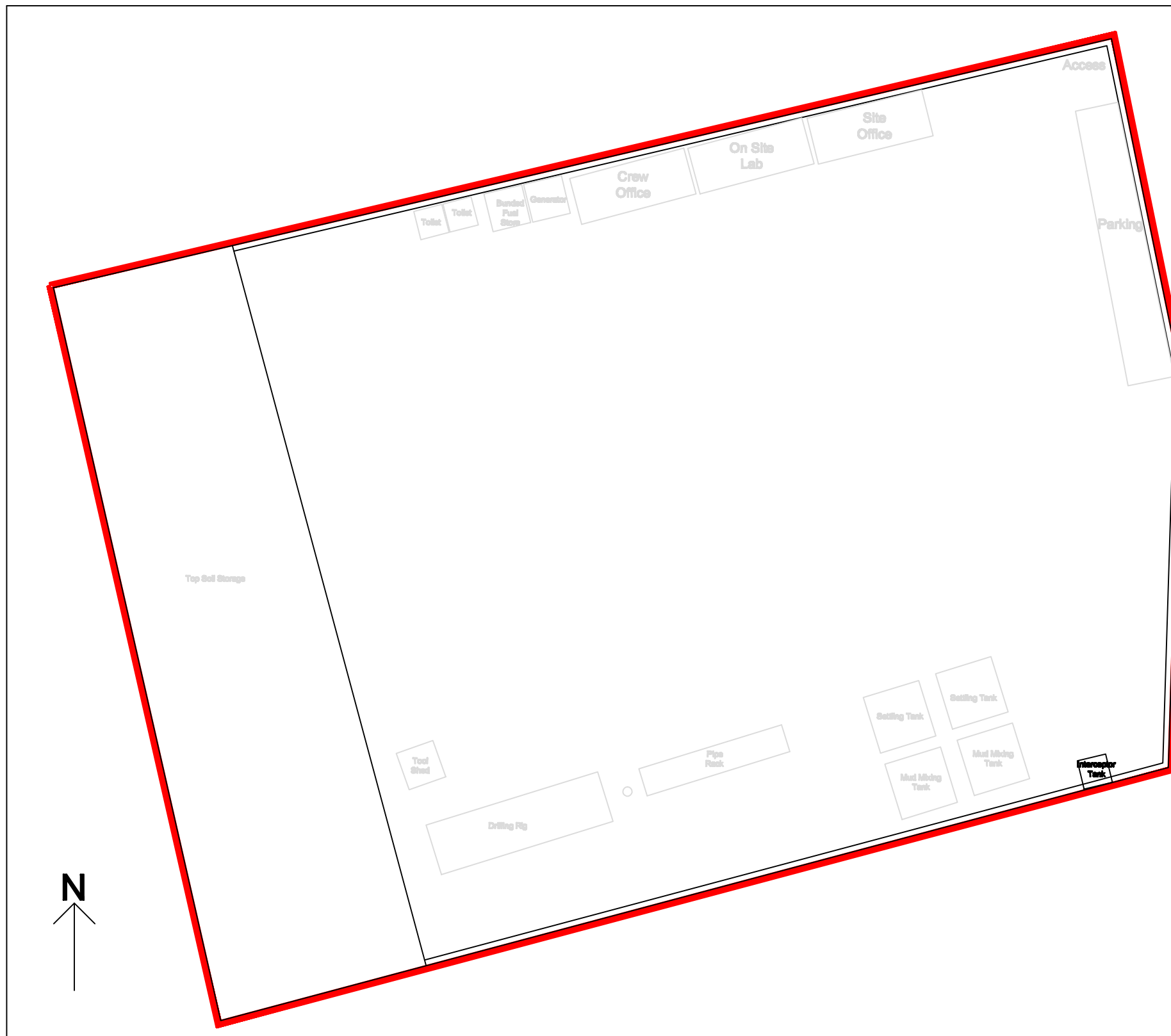


**THE VALE OF
GLAMORGAN COUNCIL**

TOWN AND COUNTRY PLANNING ACT 1990

APPROVED

SUBJECT TO COMPLIANCE WITH CONDITIONS (IF ANY)



Scale in metres
1:250 when Printed A3

Coastal Oil and Gas Limited 

Location of Cut Off Ditch Plan

© Coastal Oil and Gas 2013
Date: January - 2013

Unit 6
Bridgend Business Centre
Bridgend Industrial Estate
BRIDGEND
CF31 3BH

Liancartan Testing
Reference Number:-
P/12/PL/000001/AND/000001/0000000000