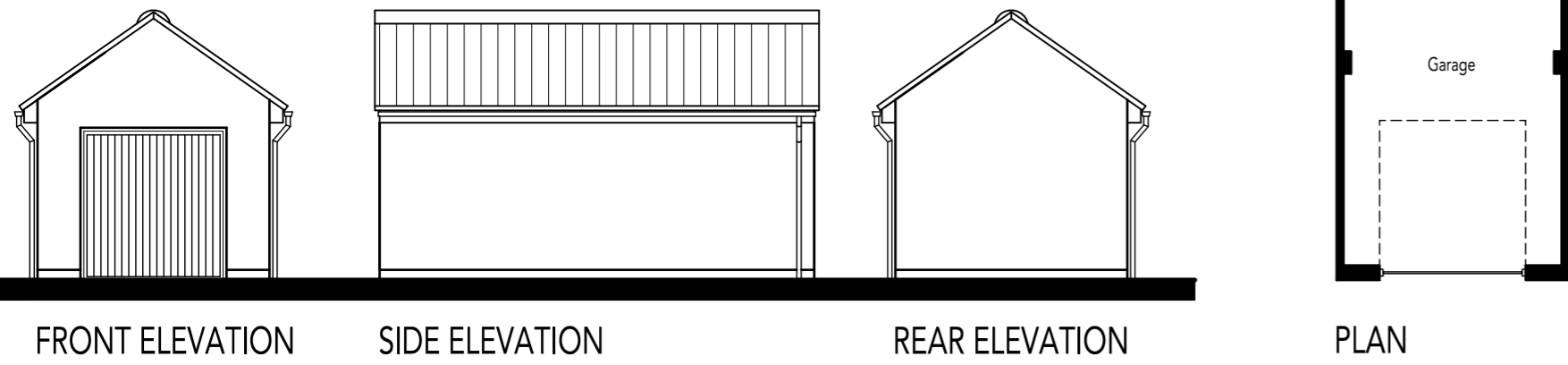
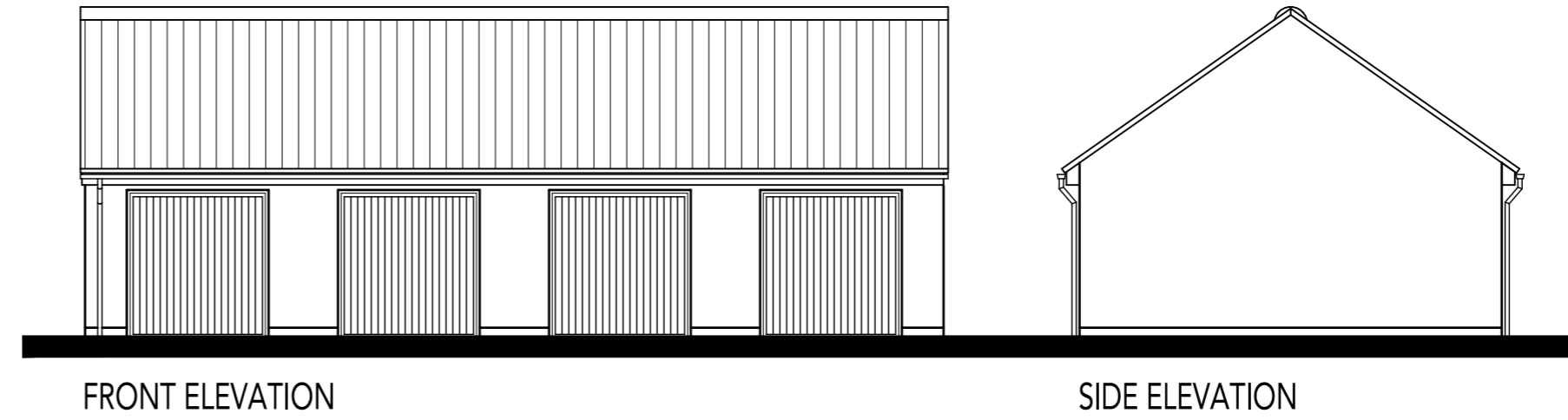


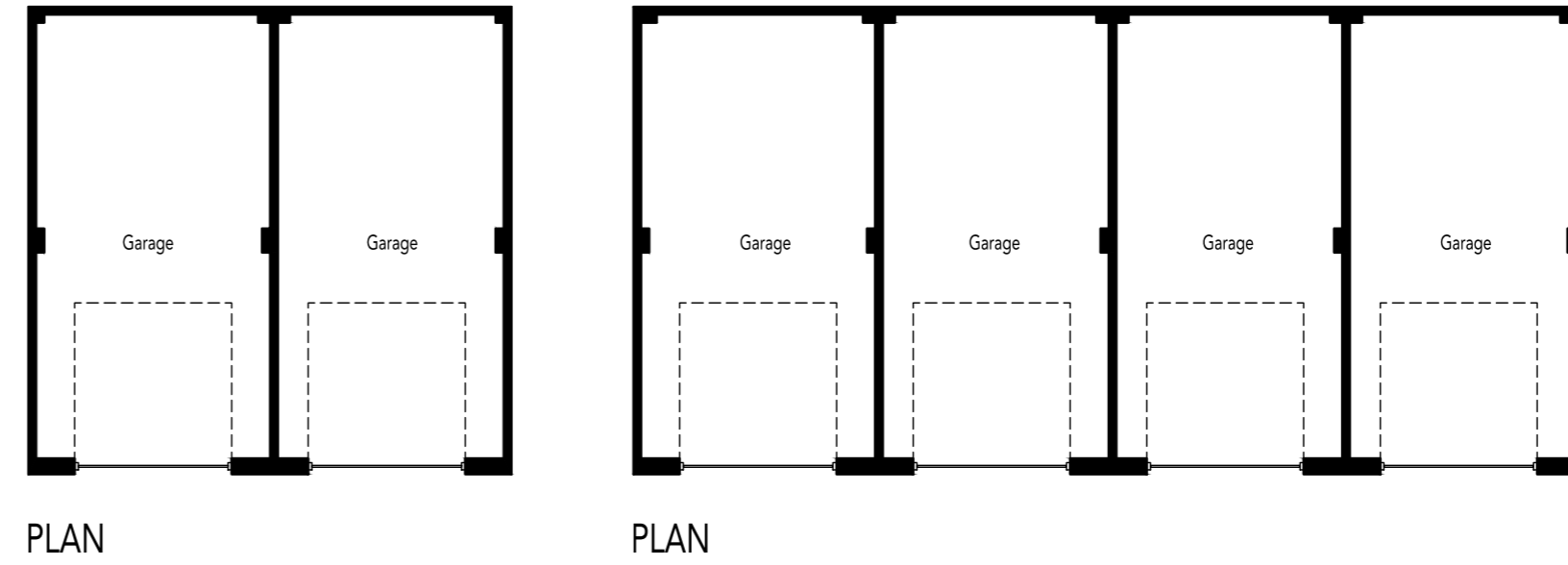
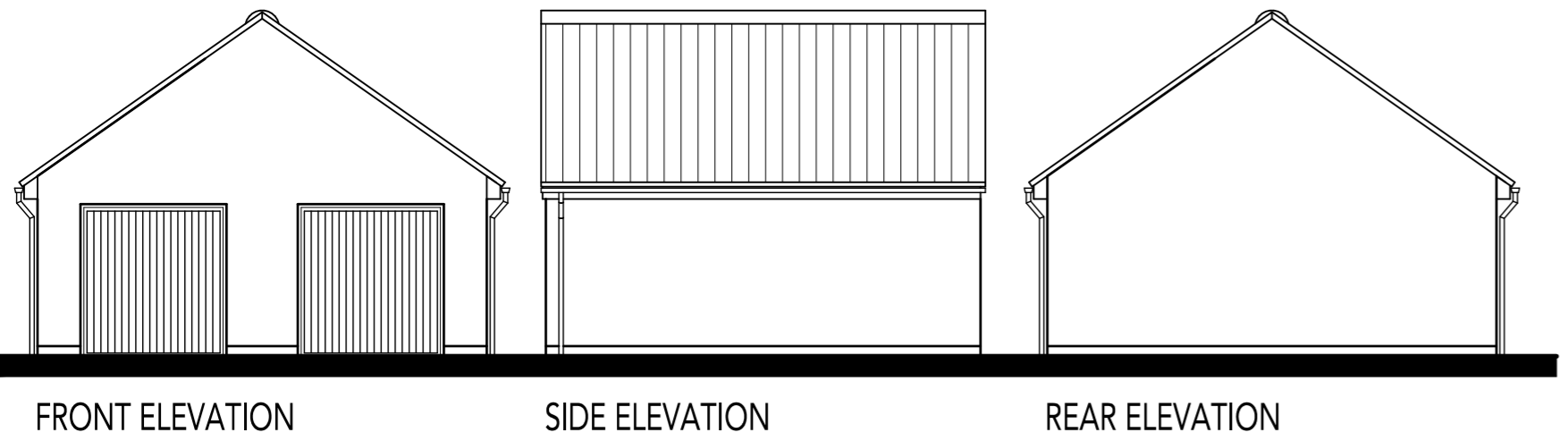
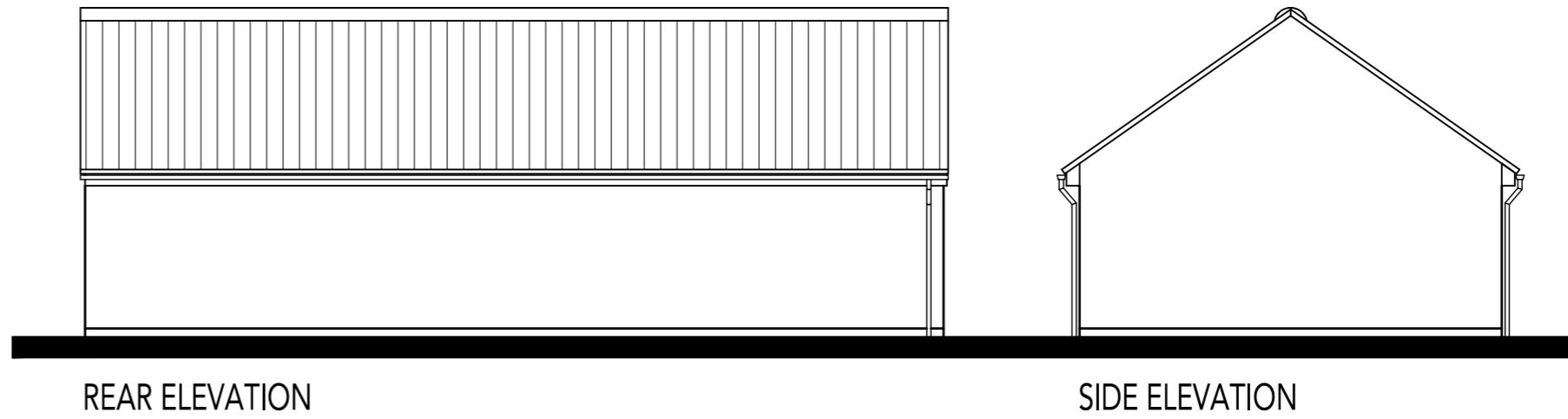
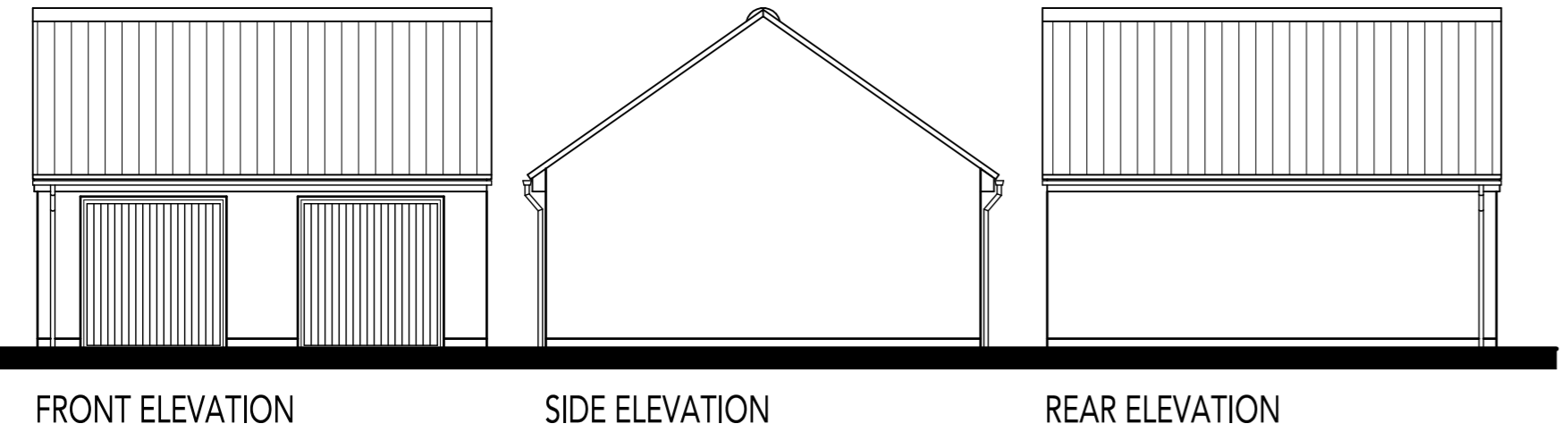
SINGLE GARAGE



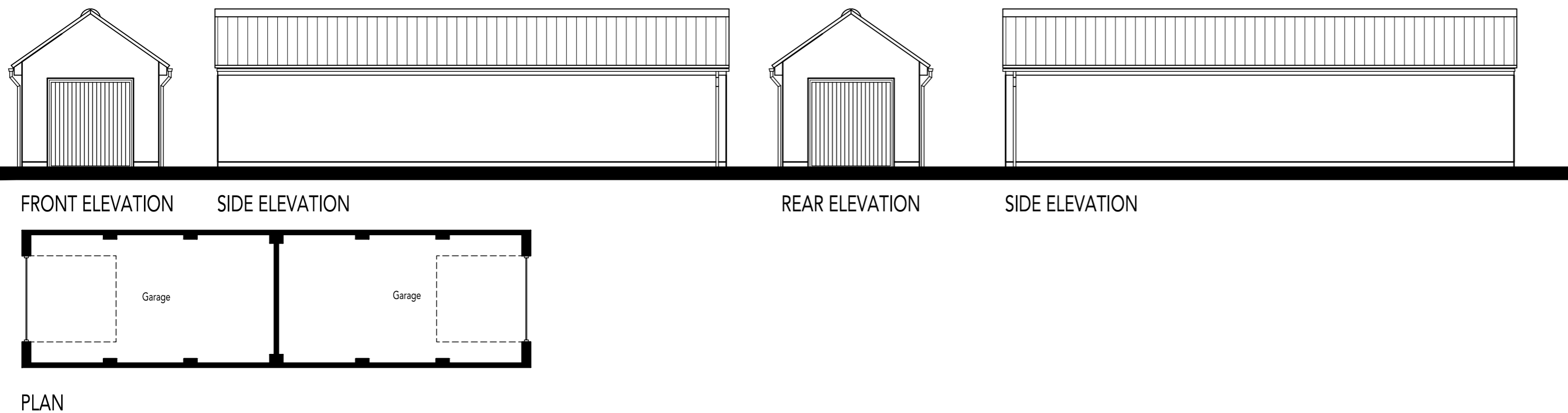
4 BAY GARAGE



DOUBLE GARAGE



2 BAY TANDEM GARAGE



Taylor Wimpey

REVISIONS:
A: 2013-03-26: Garages updated to reflect changes to layout. MED

VALE OF GLAMORGAN COUNCIL
AMENDED PLANS
RECEIVED Date.....

THE VALE OF GLAMORGAN COUNCIL
TOWN AND COUNTRY PLANNING ACT 1990
APPROVED
SUBJECT TO COMPLIANCE WITH CONDITIONS (IF ANY)

NOTE: FOR PERSONNEL DOOR POSITIONS REFER TO PLANNING LAYOUT DRG. 0460-102 & FOR MATERIALS REFER TO MATERIALS LAYOUT DRG. 0460-108.