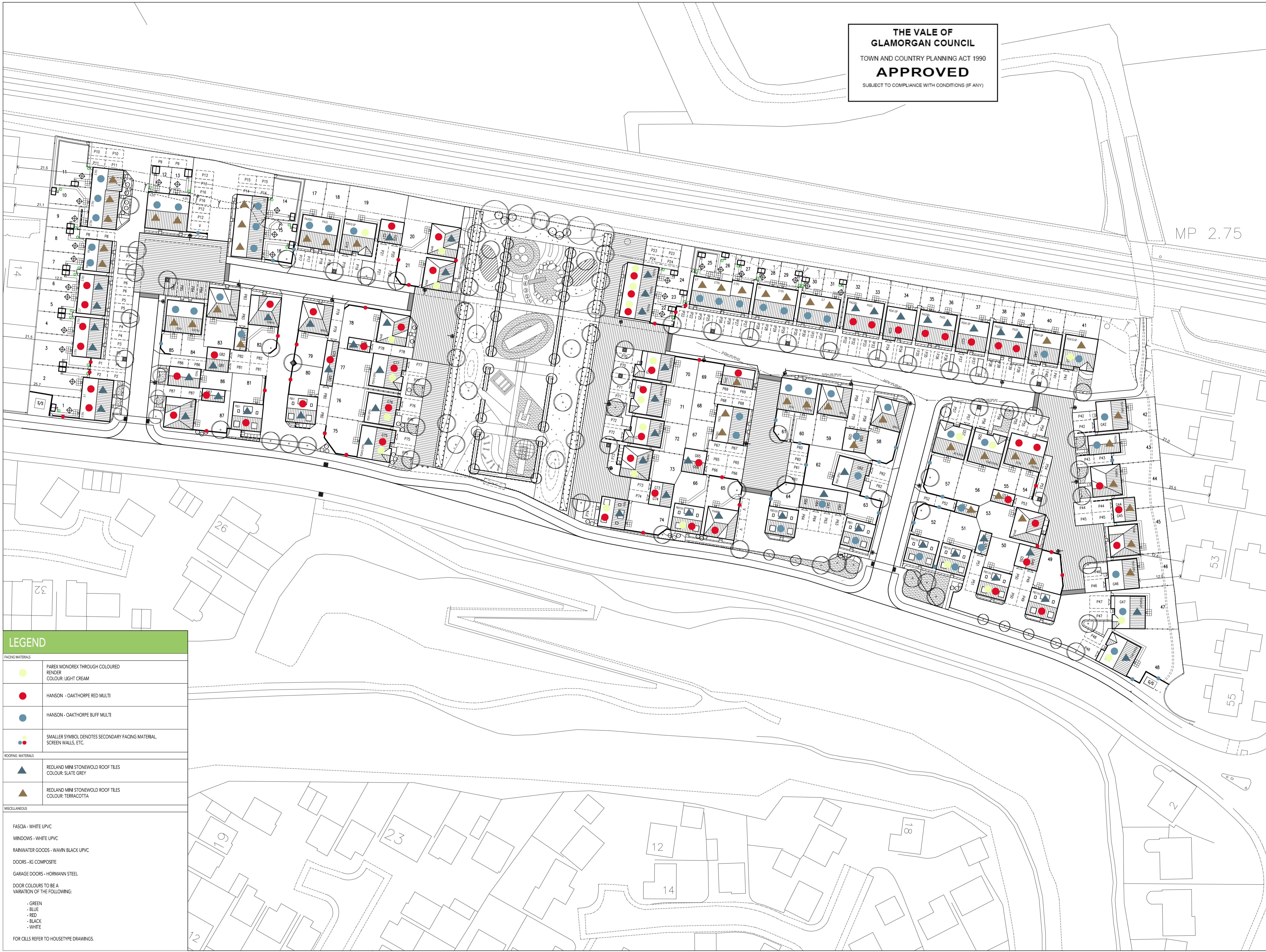


THE VALE OF
GLAMORGAN COUNCIL
TOWN AND COUNTRY PLANNING ACT 1990
APPROVED
SUBJECT TO COMPLIANCE WITH CONDITIONS (IF ANY)

**Taylor
Wimpey**

REVISION/S:
A. 2013-03-26. Materials updated to reflect layout and house type amendments. ONC

VALE OF GLAMORGAN
COUNCIL
AMENDED PLANS
RECEIVED Date.....



LEGEND	
FACING MATERIALS	
	PAREX MONOKEY THROUGH COLOURED RENDER COLOUR: LIGHT CREAM
	HANSON - OAKTHORPE RED MULTI
	HANSON - OAKTHORPE BUFF MULTI
	SMALLER SYMBOL DENOTES SECONDARY FACING MATERIAL, SCREEN WALLS, ETC.
ROOFING MATERIALS	
	REDLAND MINI STONEWOLD ROOF TILES COLOUR: SLATE GREY
	REDLAND MINI STONEWOLD ROOF TILES COLOUR: TERRACOTTA
MISCELLANEOUS	
	FASCIA - WHITE UPVC
	WINDOWS - WHITE UPVC
	RAINWATER GOODS - WAVIN BLACK UPVC
	DOORS - IG COMPOSITE
	GARAGE DOORS - HORMANN STEEL
	DOOR COLOURS TO BE A VARIATION OF THE FOLLOWING:
	- GREEN
	- BLUE
	- RED
	- BLACK
	- WHITE
	FOR CALLS REFER TO HOUSETYPE DRAWINGS.

MATERIALS LAYOUT

SCALE: 1:500 @ A1
10m

DATE: JUNE 2012
DRAWN: MSRS

DRAWING TITLE: MATERIALS LAYOUT
DRAWING NO: 0460-108

